

A faint, stylized image of a pair of scales of justice is visible in the background, centered behind the text. The scales are rendered in a light blue color, matching the overall theme of the slide. The background is a solid dark blue.

Justice Reinvestment in Action: Engaging Crime Victims, Survivors and Those Who Serve Them

January 11, 2013

A faint, stylized image of a balance scale is visible in the background, centered behind the text. The scale is tilted slightly to the right. The background is a solid dark blue color.

Introduction

Attorney General
Ellen F. Rosenblum

Justice Reinvestment & Crime Victims

A faint, light blue background image of a scale of justice, symbolizing fairness and balance. The scale is positioned behind the main text, with its central pillar and two pans visible. The pans are slightly tilted, and the overall image is semi-transparent, allowing the dark blue background to show through.

What We Know....

- Crime victims, survivors and professionals who assist them are **key stakeholders** in JRI processes
- Proactive engagement ensures that the **voices of crime victims** are heard
- The input from Roundtables is *essential* to identifying victims' needs and prioritizing justice reinvestment into victim services

Goals of Roundtables

- Educate crime victims and those who serve them about the JRI process, including sponsorship, data collection and analysis and development of policy recommendations.
- Provide an opportunity for input about victims' needs, rights and services within a state, including gaps in service delivery; and establish consensus priorities.
- Provide an opportunity to offer feedback to any initial JRI policy analyses and findings.

Who Is Engaged?

- State victim assistance leaders
- State coalitions
- Community-based victim assistance programs
- System-based victim assistance programs
- Victim assistance programs within Indian Nations
- Crime victims and survivors (*identified with help from victim assistance professionals*)

The Roundtable Process

- Presentation about JRI process and initial findings
- Participant input into findings
- Discussion of victims' rights and services, including gaps in assistance and implementation of victims' rights
- Priorities established in *Summary Report*
- Feedback from participants on draft *Report*

Other Helpful Data

(these vary state-to-state)

- Findings from statewide needs assessments, research/evaluation studies, gap analyses
- Examination of increases & decreases in funding
- Amount of funding requested versus allocated from state & Federal sources
- Victim compensation claims – requested vs. awarded
- Victim restitution data

Oregon Roundtables

- Preliminary meetings held in July 2012 to identify key issues and participants
- Oregon is the *first state* to conduct TWO Roundtables (in order to identify the specific, unique needs of victims in rural/remote/Indian Nation jurisdictions)
- 35 participants at two Roundtables



Vanessa Timmons

Executive Director
Oregon Coalition Against Domestic
and Sexual Violence

Domestic and Sexual Violence in Oregon

- In the last decade, more than 206 Oregonians have died due to Intimate Partner Violence—almost 70% of the deaths (140) happened in the last 4 years.
- A recent CDC study found that Oregon has one of the highest rates of sexual assault in the nation.
- Nearly 1/3rd of Oregon's self-sufficiency cases and founded child abuse cases are related to domestic violence.

Domestic and Sexual Violence Services are lifesaving community-based programs, providing emergency shelter and housing options; safety planning; counseling and support groups; medical accompaniment; and legal advocacy.

Some programs are on the tipping point—reducing services or considering closing altogether. \$16.8M/year is needed just to meet minimal emergency need; less than half that amount is available.

In 2011, over 20,500 requests for emergency shelter from violence couldn't be met in Oregon. That's more than 2 unmet requests every hour—every day—of the entire year.



Karen Phifer, MSW, LCSW

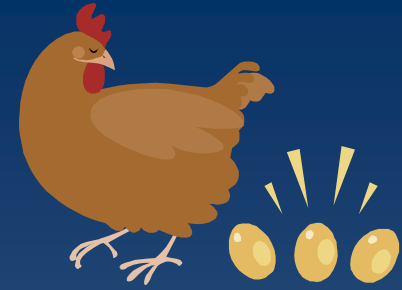
Clinical Operations Supervisor
CARES Northwest

Our Youngest Victims

- 20 Child Abuse Assessment Centers in Oregon
- 6800 children seen annually for child maltreatment assessments



Chicken or Egg?



- Multiple risk factors involved with every child
- 49% experiencing domestic violence in the family
- 54% with parental history of drug/alcohol problems
- 20% having exposure to known perpetrators of violent crimes



It Costs *What?*



- \$1600-\$1800 per assessment
- \$100 billion cost to the nation annually
- Centers that are able bill medical insurance
- CAMI funds
- Center fund raising
- **BIG** gaps remain



Meg Garvin, M.A., J.D.

Executive Director

National Crime Victim Law Institute
& Clinical Professor of Law at Lewis
& Clark Law School

QUESTIONS & DISCUSSION



WHAT WORKS IN PUBLIC SAFETY