



Local Public Safety Coordinating Council of Multnomah County

Public Safety Trends Summary

The Public Safety Trends document provides an executive level summary of operational data for many of the decision points and agencies in Multnomah County's public safety system. The statistics in the Report are compiled from the Decision Support System – Justice (DSSJ) data warehouse.

October 2013

Dear Reader,

Welcome to the Public Safety Trends Summary Report produced by Multnomah County's Local Public Safety Coordinating Council (LPSCC). The purpose of this report is to provide an executive level summary of operational data for many of the decision points in the County's Public Safety System for the Council's Executive Committee, partner agency staff, and members of the public.

The statistics detailed in this report are sourced from the County's Decision Support System – Justice data warehouse (DSSJ). The data contained in DSSJ is sourced from the host agency systems and is regularly audited for accuracy. Additionally, the data presented in this report is regularly reviewed by the owner agency analysts for consistency and clarity.

The Report provides both long term trend data and near term descriptive statistics. The long term trends section provides a description of how certain types of events, case types, and charge levels have changed over time. The short-term trends section provides a more detailed description of the data presented in the long-term trend section. Measures of reported Incidents, Arrest, Disposition, and Sentencing are reported at the case unit level. Measures for Booking and Custody are reported at the person level.

The Public Safety Trends Report is produced on a regular basis and serves as a starting point for broader investigations of trends in local public safety. Frequently, the Report will contain a special analysis section providing a systems perspective of specific areas in the local public safety system.

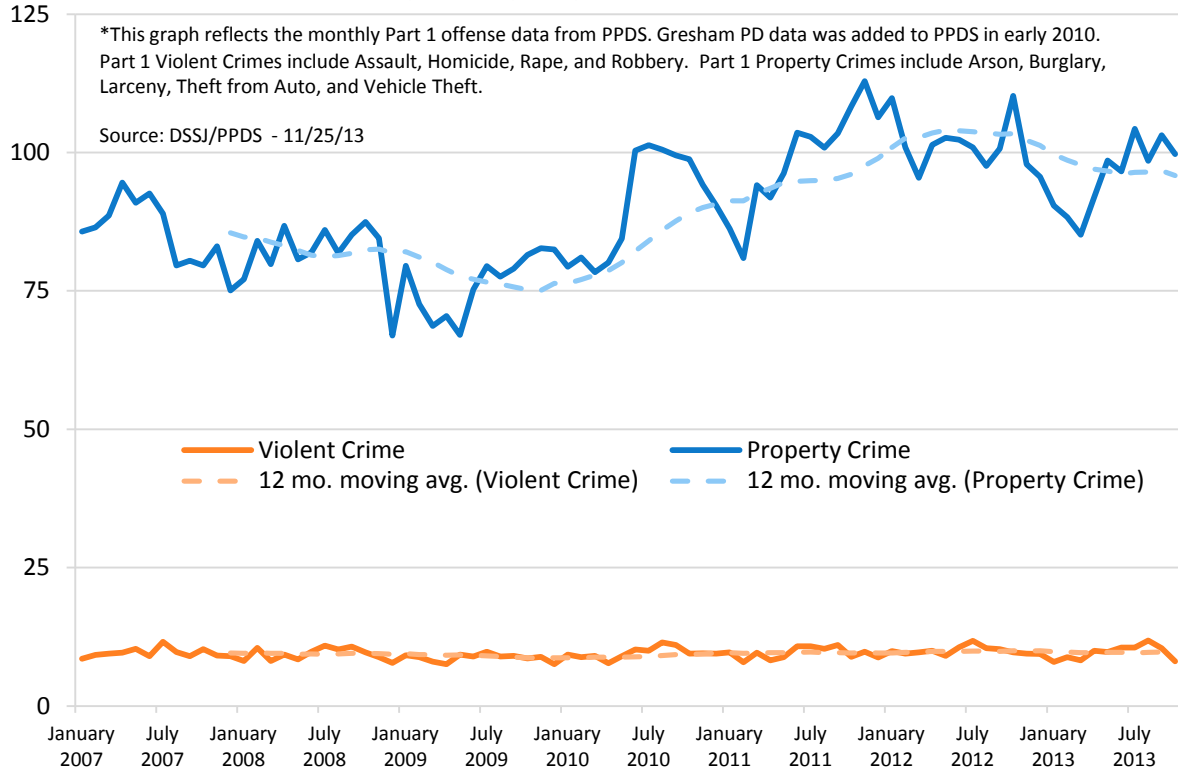
Lauren Brown
LPSCC Analyst



Contact Lauren Brown with questions or concerns lauren.brown@multco.us
Current and past editions of this report are available at www.lpscc.org



Average Daily Reported Part 1 Offenses*

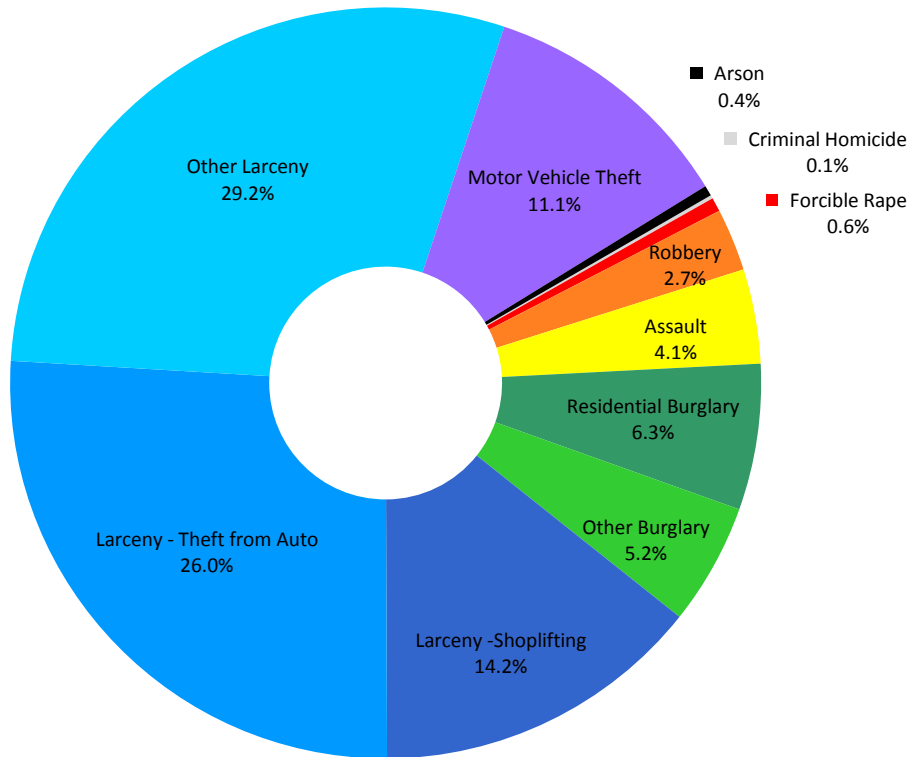


Average Daily Part 1 Offenses for October 2013

There were 5 reported homicides in October 2013, for a total of 19 homicides since January 2013. During the same time period in 2012, there were 30 reported homicides.

Average daily Part 1 offenses in October 2013 = 107.8

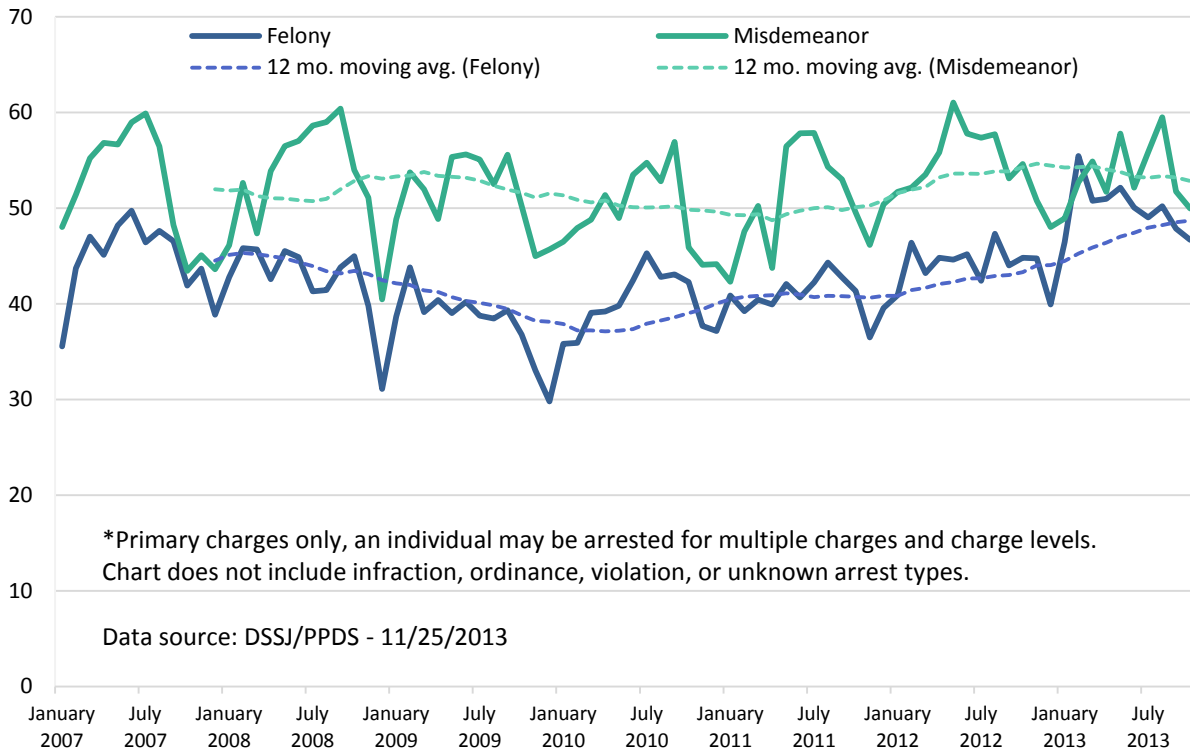
Source: DSSJ/PPDS 11/25/13



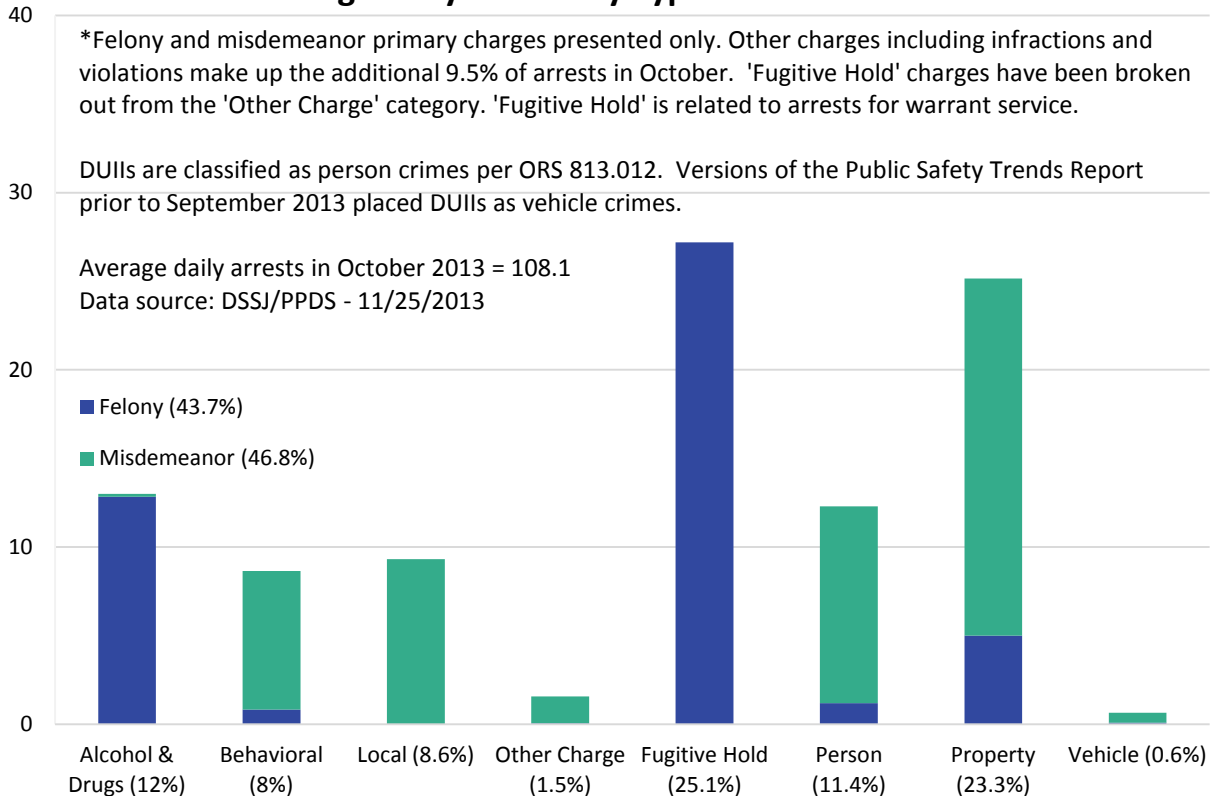
Contact Lauren Brown with questions or concerns lauren.brown@multco.us
 Current and past editions of this report are available at www.lpscc.org



Average Daily Arrests by Charge Level*



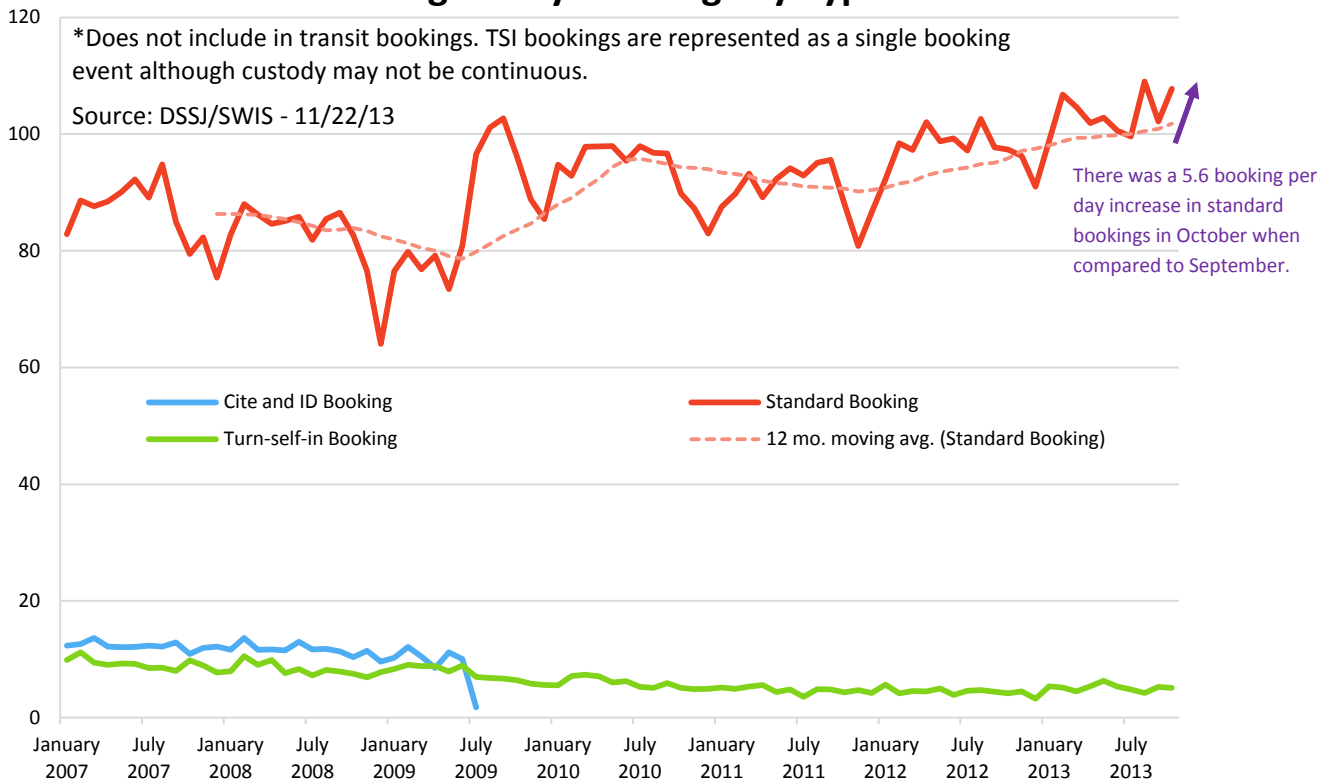
Average Daily Arrests by Type in October 2013*



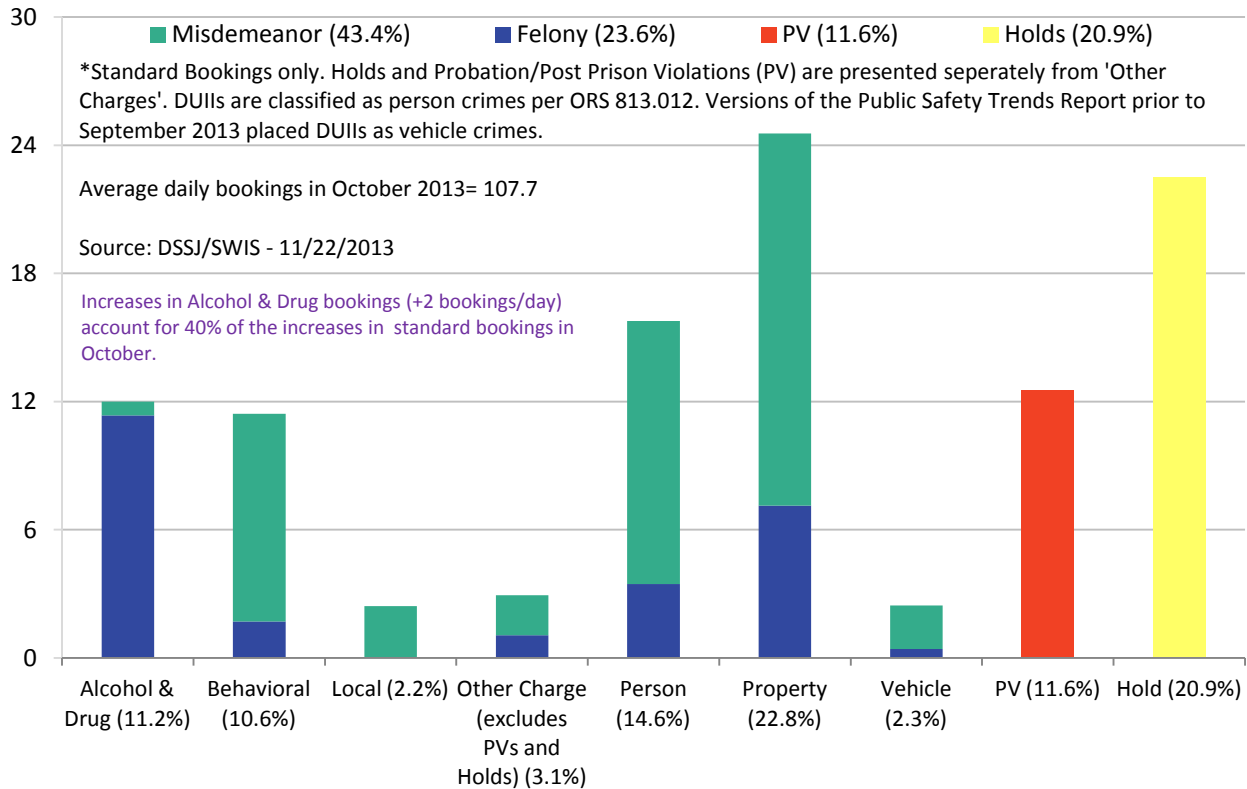
Contact Lauren Brown with questions or concerns lauren.brown@multco.us
Current and past editions of this report are available at www.lpscc.org



Average Daily Bookings by Type*



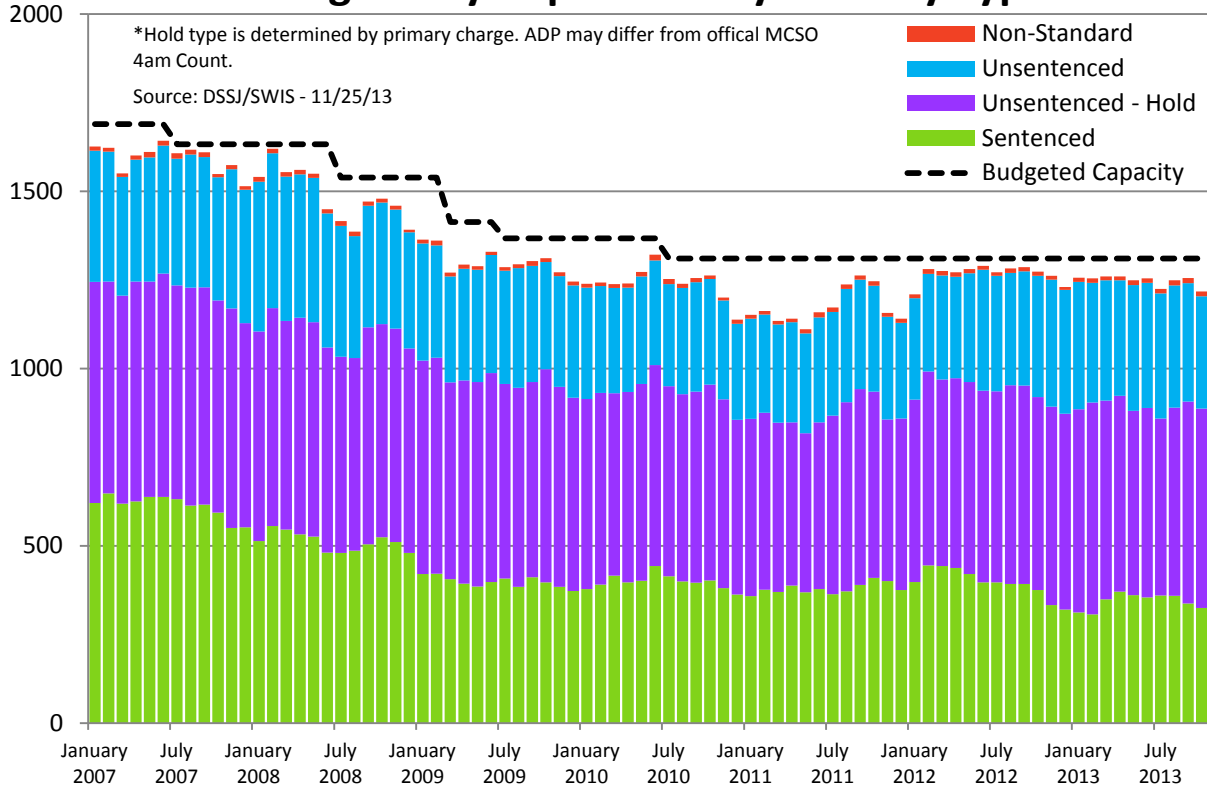
Average Daily Bookings by Charge October 2013*



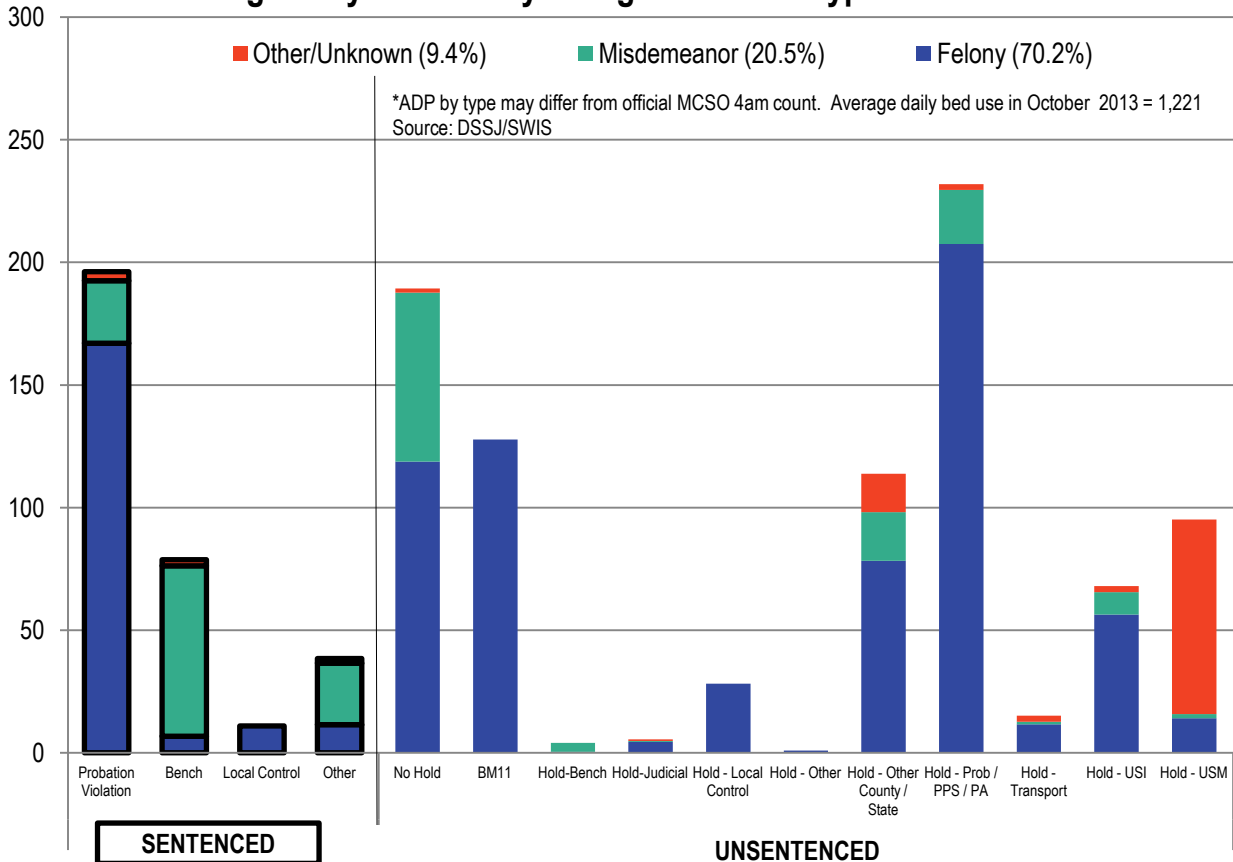
Contact Lauren Brown with questions or concerns lauren.brown@multco.us
 Current and past editions of this report are available at www.lpscc.org



Average Daily Population by Custody Type*



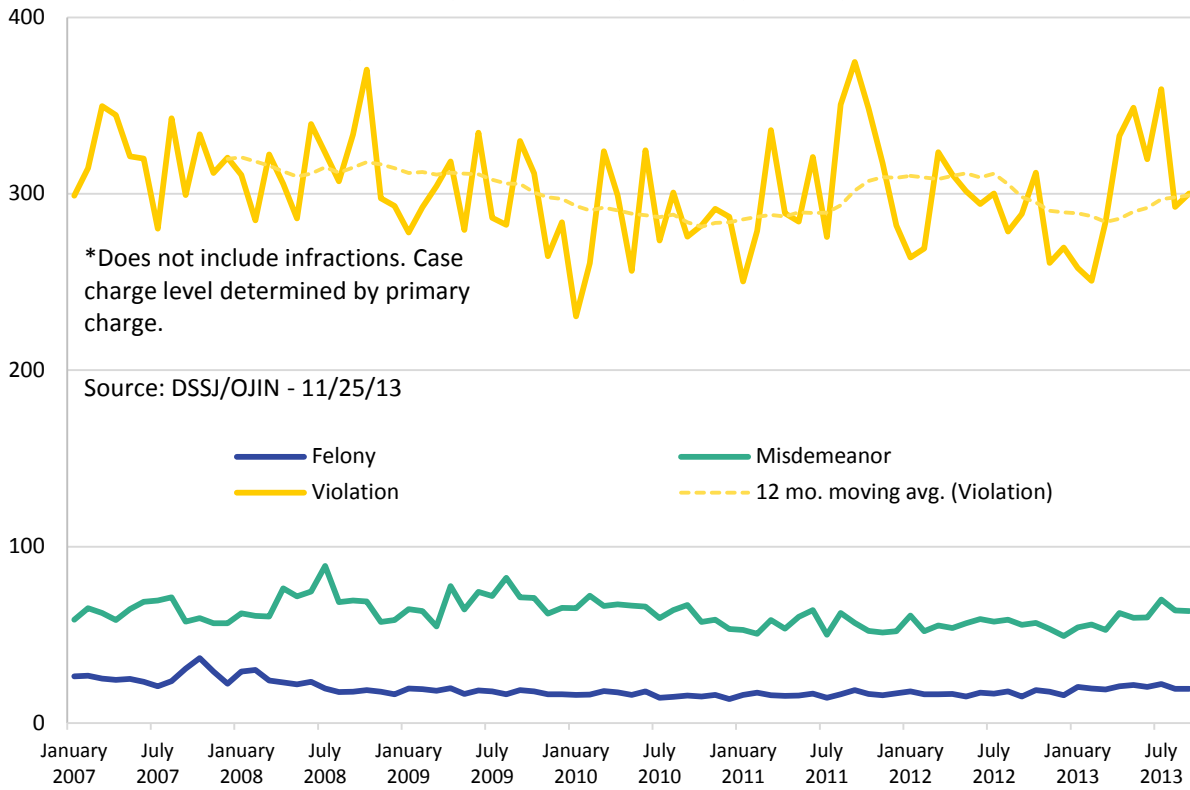
Average Daily Bed Use by Charge Level and Type October 2013*



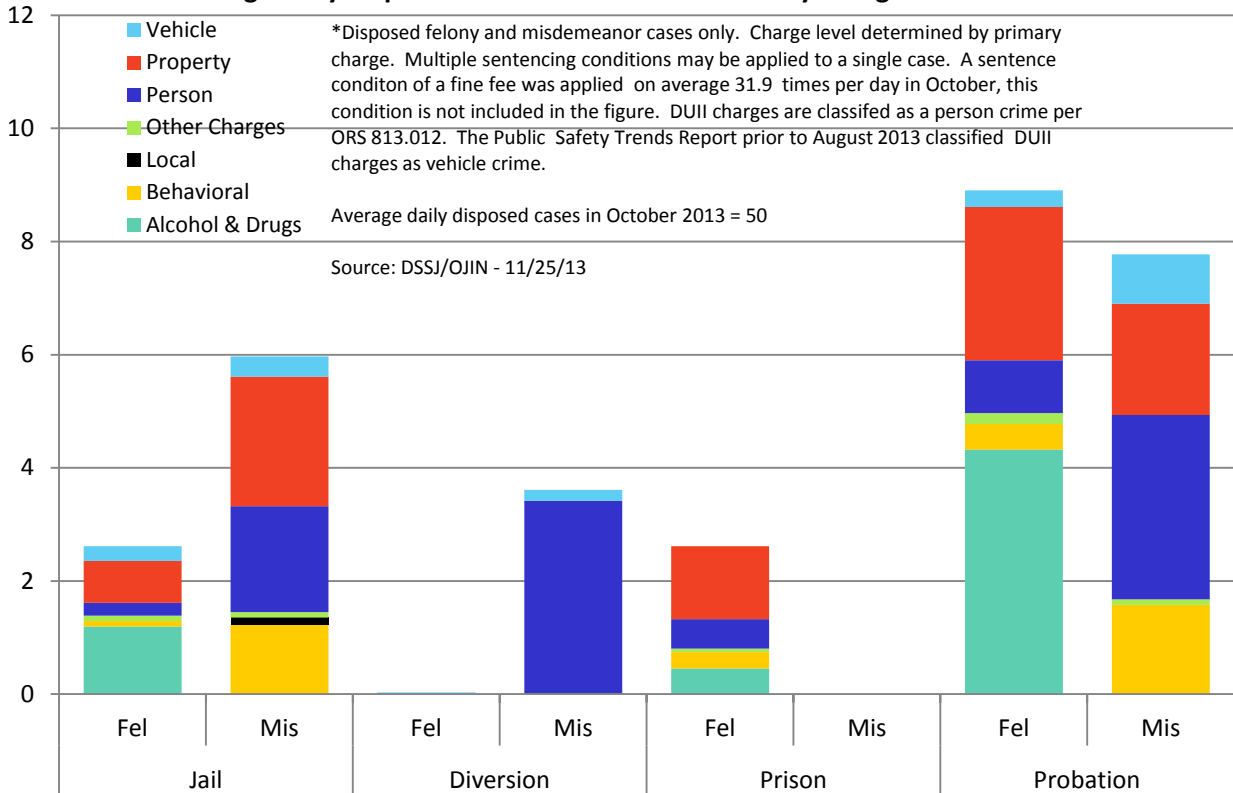
Contact Lauren Brown with questions or concerns lauren.brown@multco.us
 Current and past editions of this report are available at www.lpscc.org



Average Daily Cases Disposed by Charge Level*



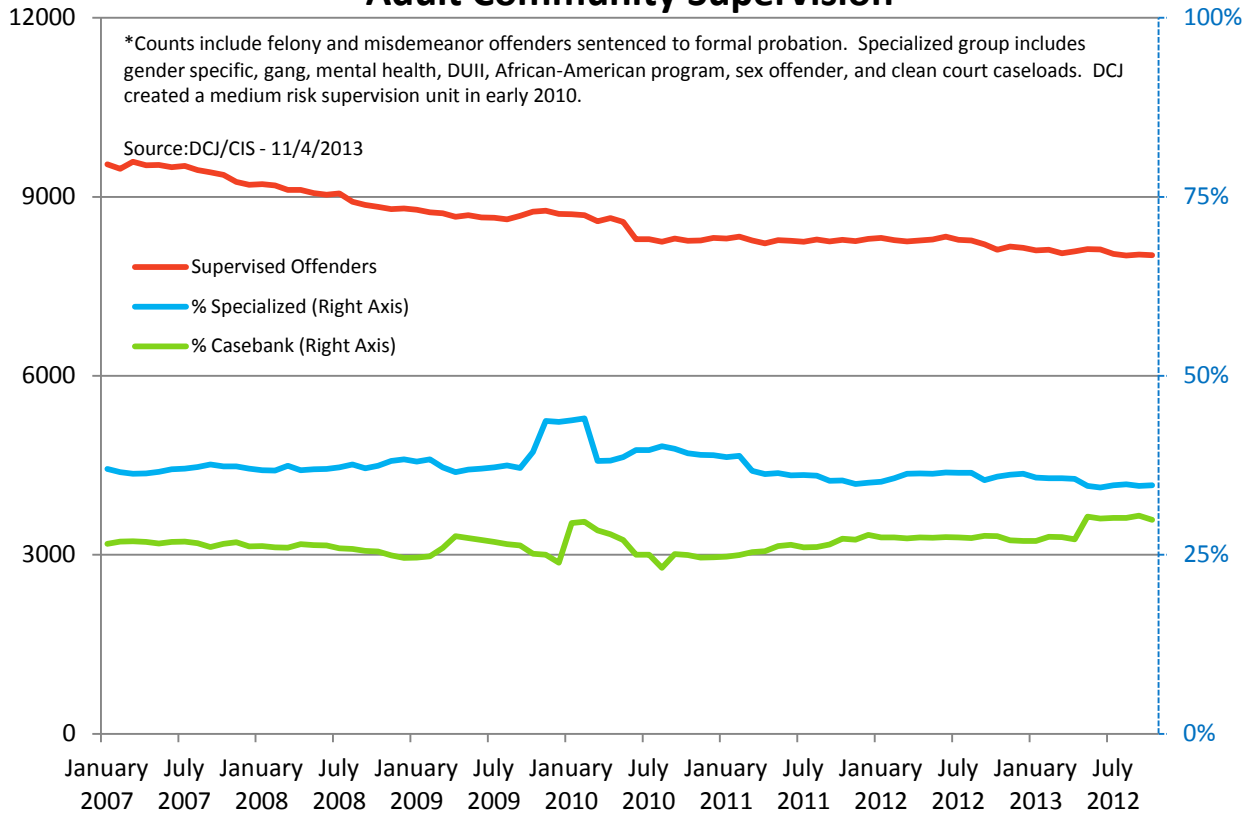
Average Daily Disposed Case Sentence Conditions by Charge in October 2013*



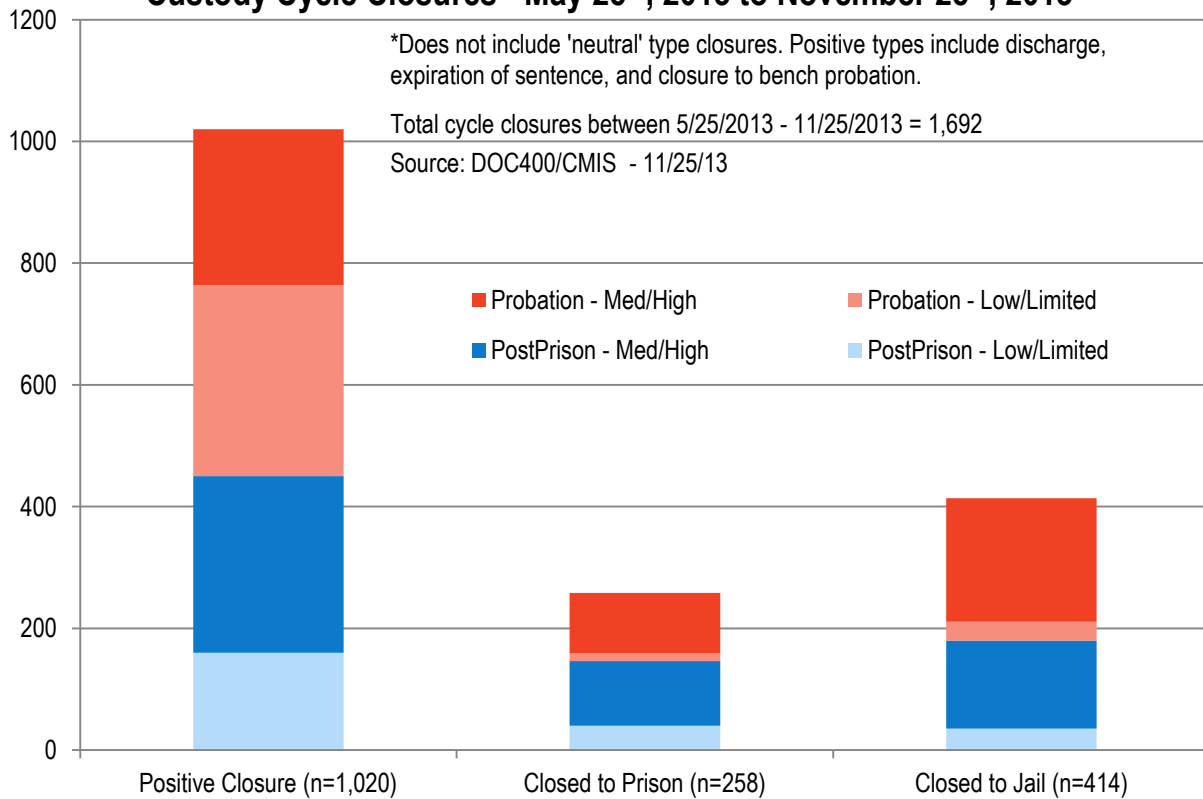
Contact Lauren Brown with questions or concerns lauren.brown@multco.us
 Current and past editions of this report are available at www.lpscc.org



Adult Community Supervision*



Custody Cycle Closures - May 25th, 2013 to November 25th, 2013*



Contact Lauren Brown with questions or concerns lauren.brown@multco.us
 Current and past editions of this report are available at www.lpscc.org

