



# Local Public Safety Coordinating Council of Multnomah County

## Public Safety Trends Summary

The Public Safety Trends document provides an executive level summary of operational data for many of the decision points and agencies in Multnomah County's public safety system. The statistics in the Report are compiled from the Decision Support System – Justice (DSSJ) data warehouse.

**December 2013**

Dear Reader,

Welcome to the Public Safety Trends Summary Report produced by Multnomah County's Local Public Safety Coordinating Council (LPSCC). The purpose of this report is to provide an executive level summary of operational data for many of the decision points in the County's Public Safety System for the Council's Executive Committee, partner agency staff, and members of the public.

The statistics detailed in this report are sourced from the County's Decision Support System – Justice data warehouse (DSSJ). The data contained in DSSJ is sourced from the host agency systems and is regularly audited for accuracy. Additionally, the data presented in this report is regularly reviewed by the owner agency analysts for consistency and clarity.

The Report provides both long term trend data and near term descriptive statistics. The long term trends section provides a description of how certain types of events, case types, and charge levels have changed over time. The short-term trends section provides a more detailed description of the data presented in the long-term trend section. Measures of reported Incidents, Arrest, Disposition, and Sentencing are reported at the case unit level. Measures for Booking and Custody are reported at the person level.

The Public Safety Trends Report is produced on a regular basis and serves as a starting point for broader investigations of trends in local public safety. Frequently, the Report will contain a special analysis section providing a systems perspective of specific areas in the local public safety system.

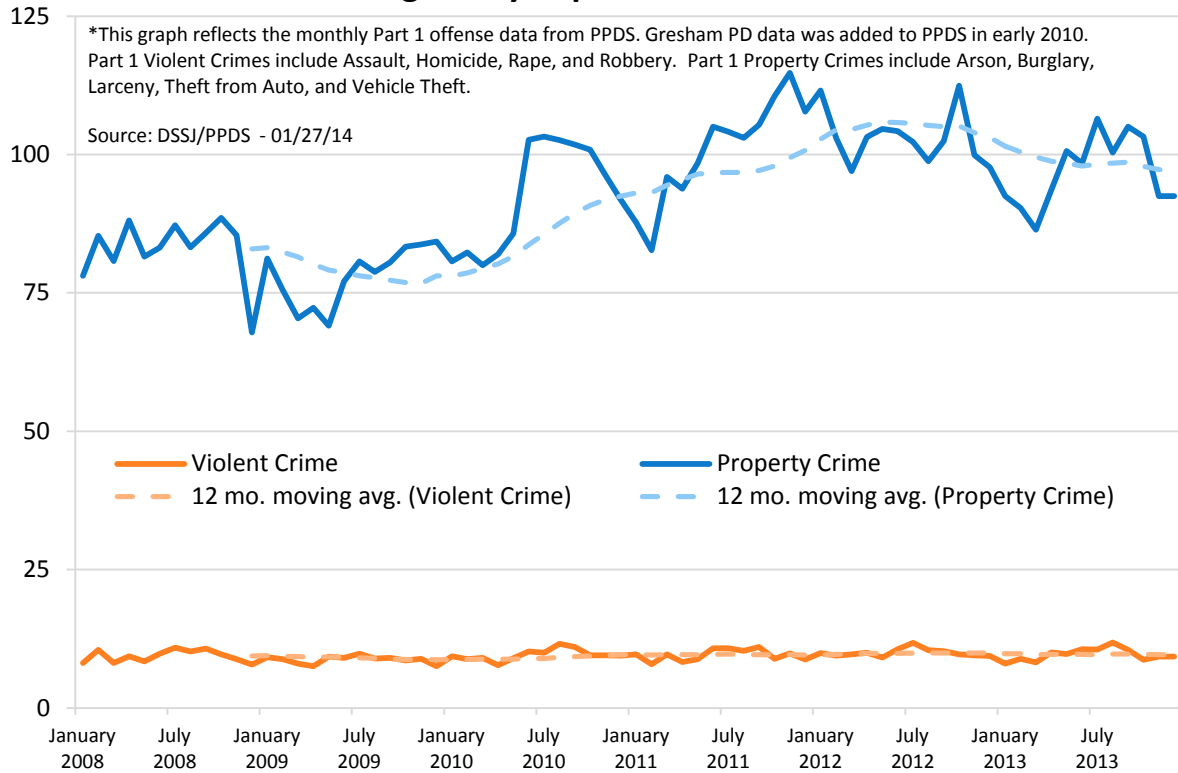
Lauren Brown  
LPSCC Analyst



Contact Lauren Brown with questions or concerns [lauren.brown@multco.us](mailto:lauren.brown@multco.us)  
Current and past editions of this report are available at [www.lpscc.org](http://www.lpscc.org)



### Average Daily Reported Part 1 Offenses\*



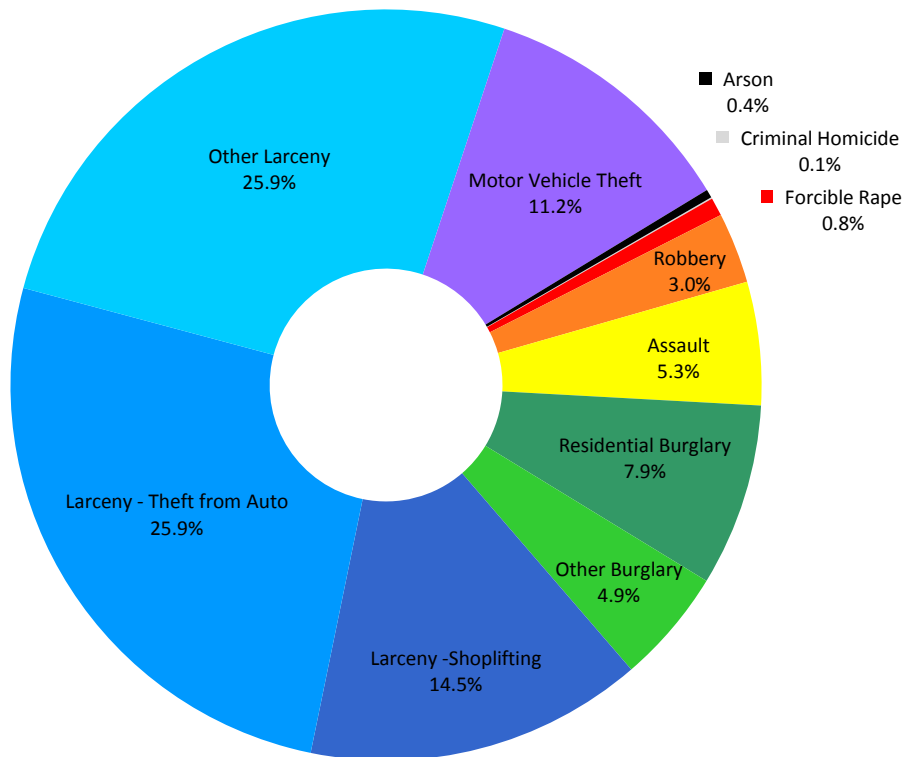
### Average Daily Part 1 Offenses for December 2013

There were a total of 24 reported homicides during 2013 in Multnomah County, a decrease from the 31 homicides reported the prior year.

Average daily reported Part 1 offenses in December 2013 =105.3.

Average daily reported Part 1 offenses for 2013 =107.5. On average there were 5.6 fewer reported offenses per day when compared to 2012.

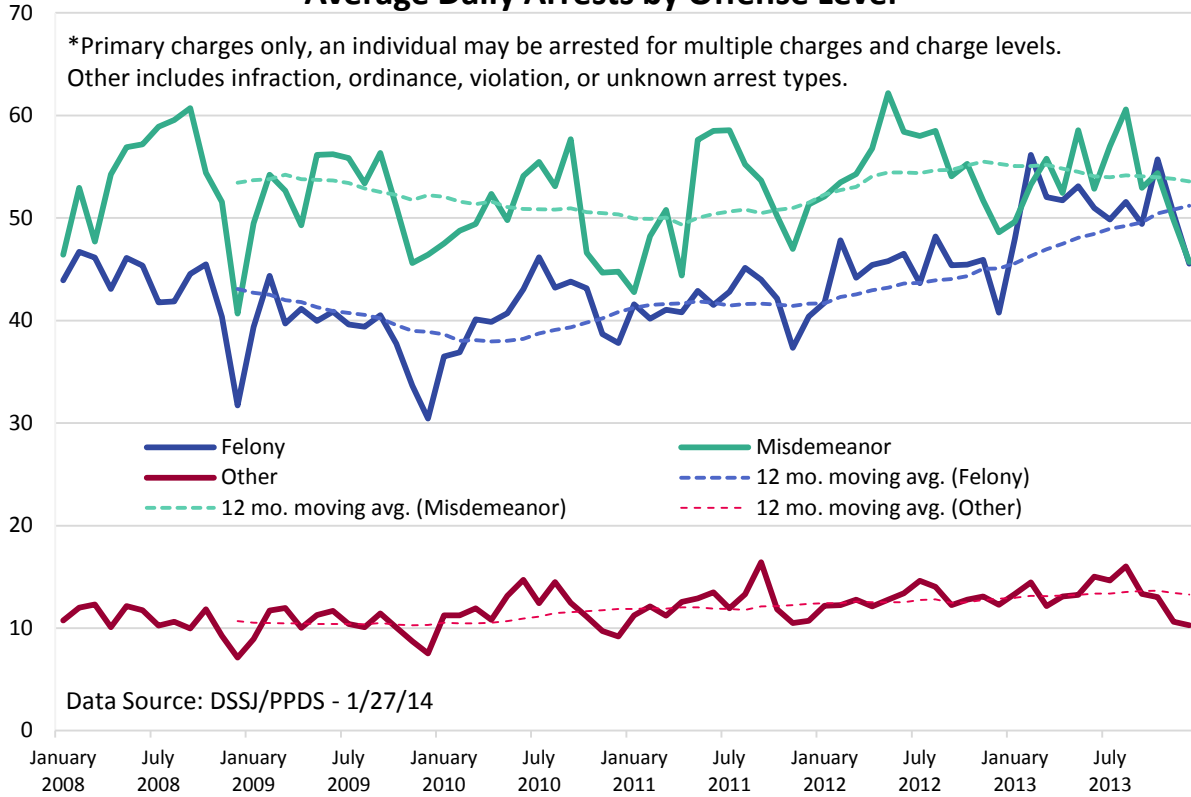
Source: DSSJ/PPDS  
1/27/14



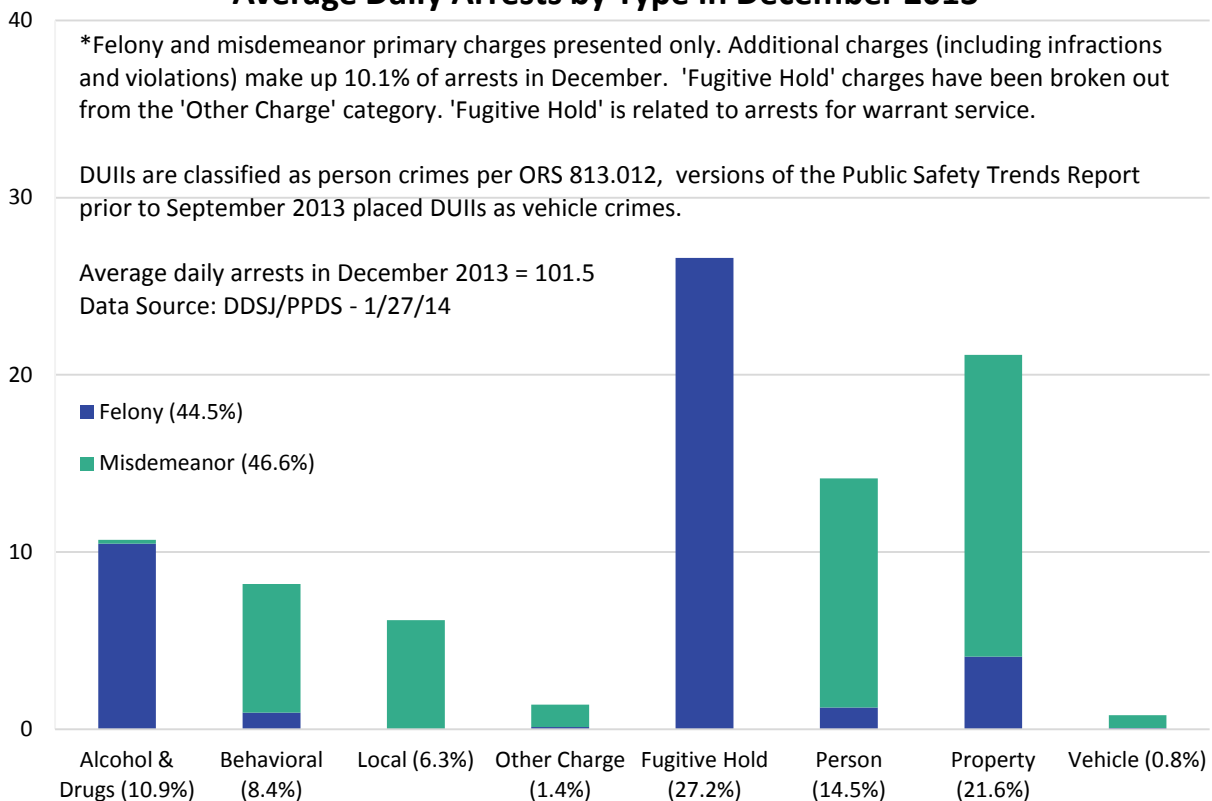
Contact Lauren Brown with questions or concerns [lauren.brown@multco.us](mailto:lauren.brown@multco.us)  
Current and past editions of this report are available at [www.lpscc.org](http://www.lpscc.org)



### Average Daily Arrests by Offense Level\*



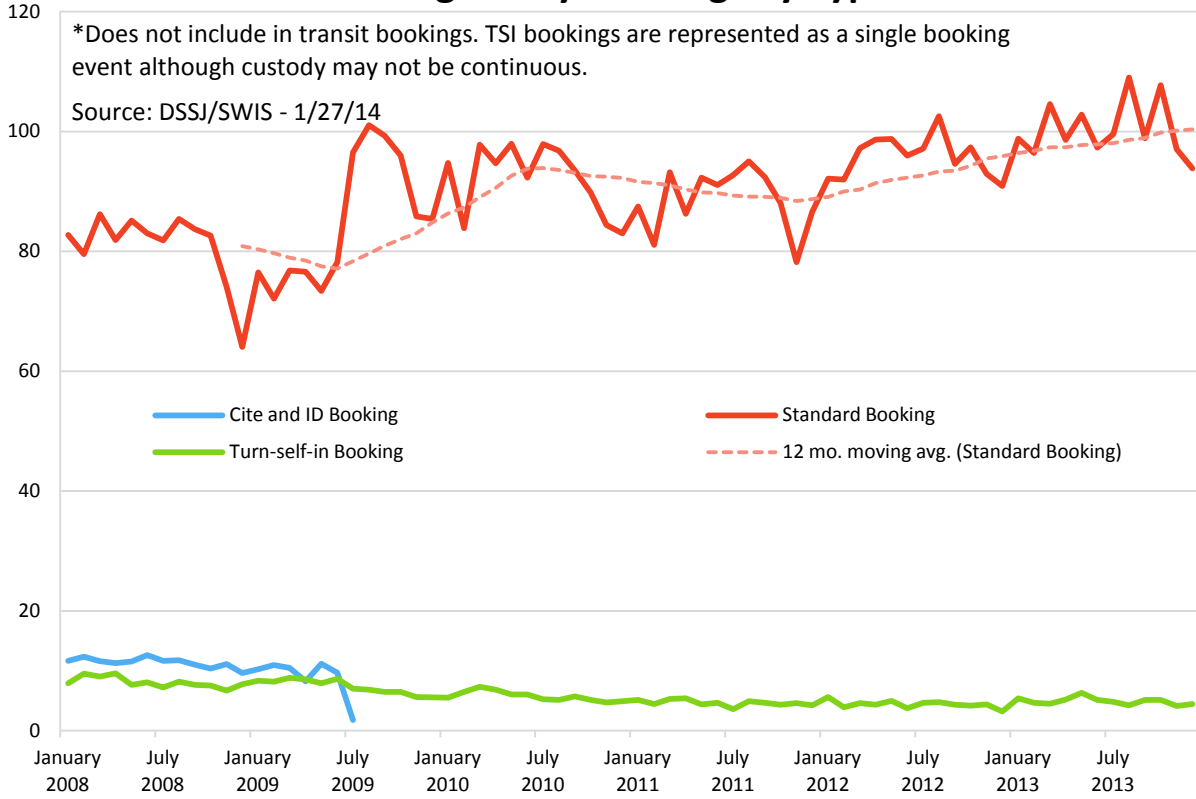
### Average Daily Arrests by Type in December 2013\*



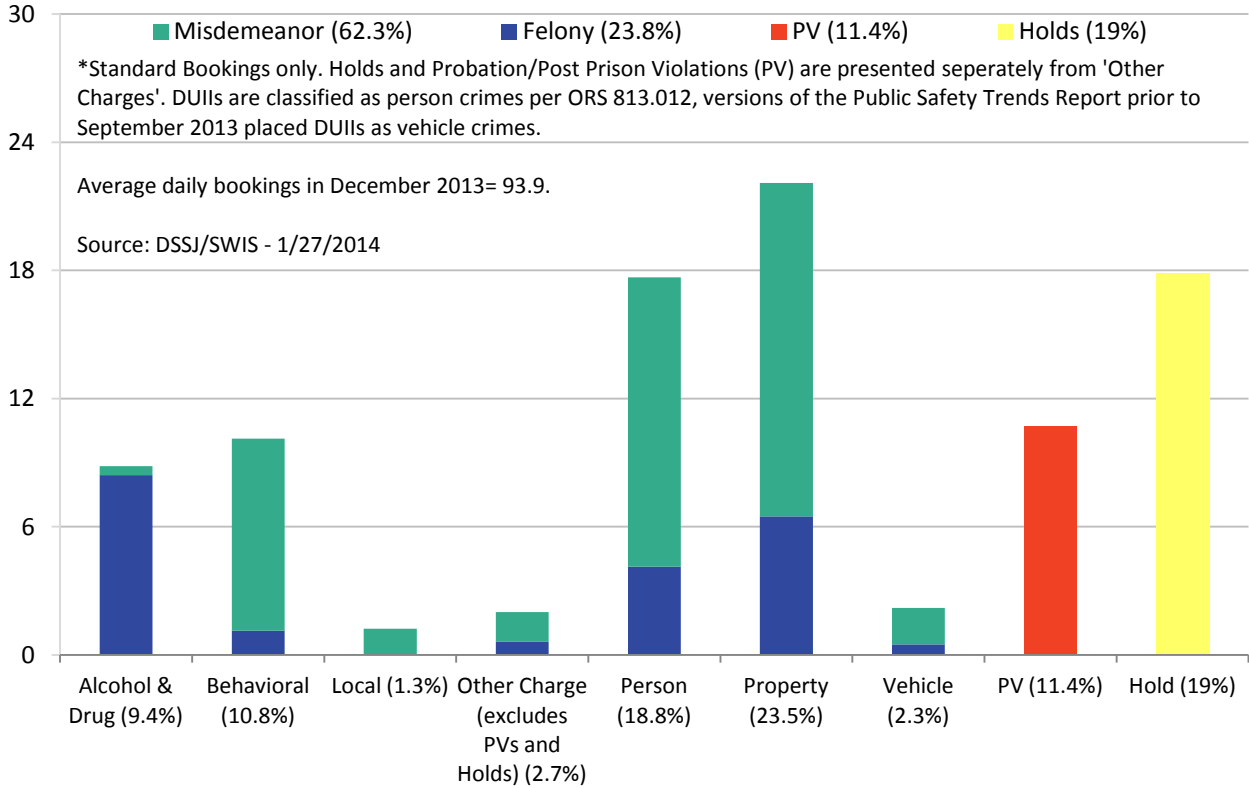
Contact Lauren Brown with questions or concerns [lauren.brown@multco.us](mailto:lauren.brown@multco.us)  
Current and past editions of this report are available at [www.lpscc.org](http://www.lpscc.org)



### Average Daily Bookings by Type\*



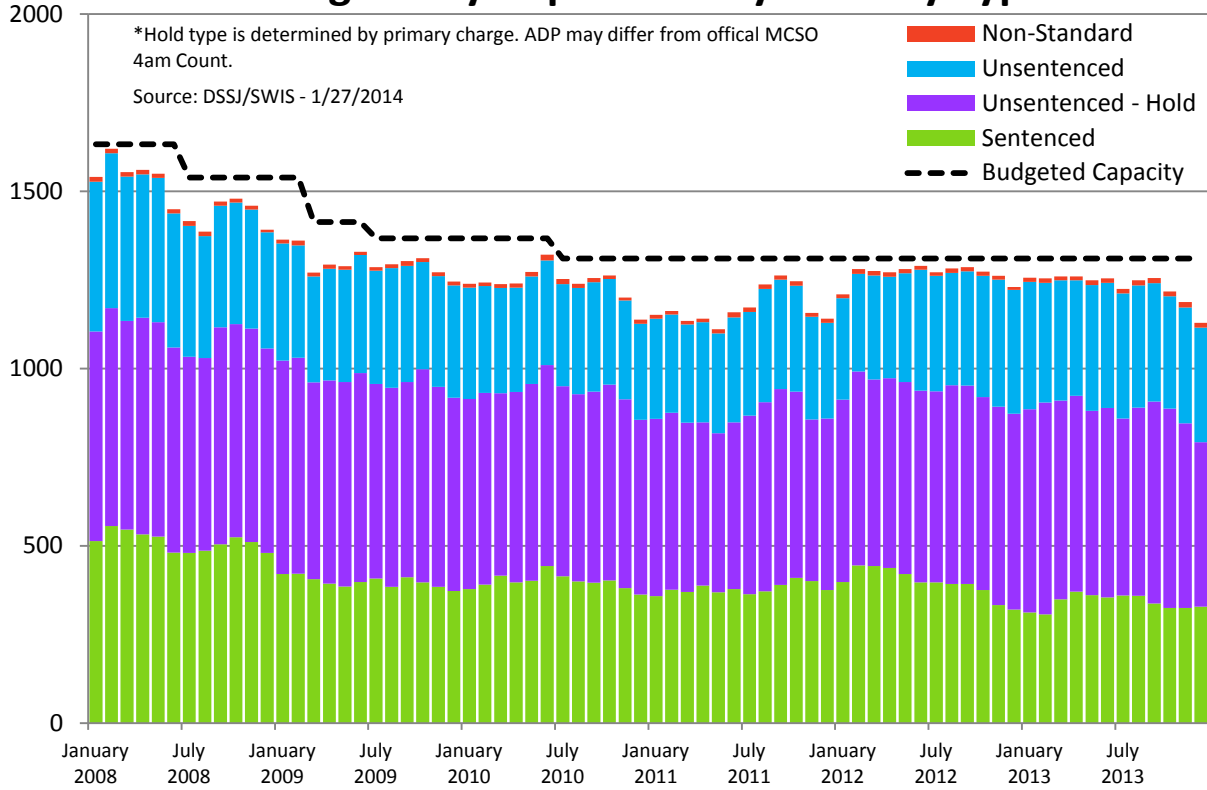
### Average Daily Bookings by Charge December 2013\*



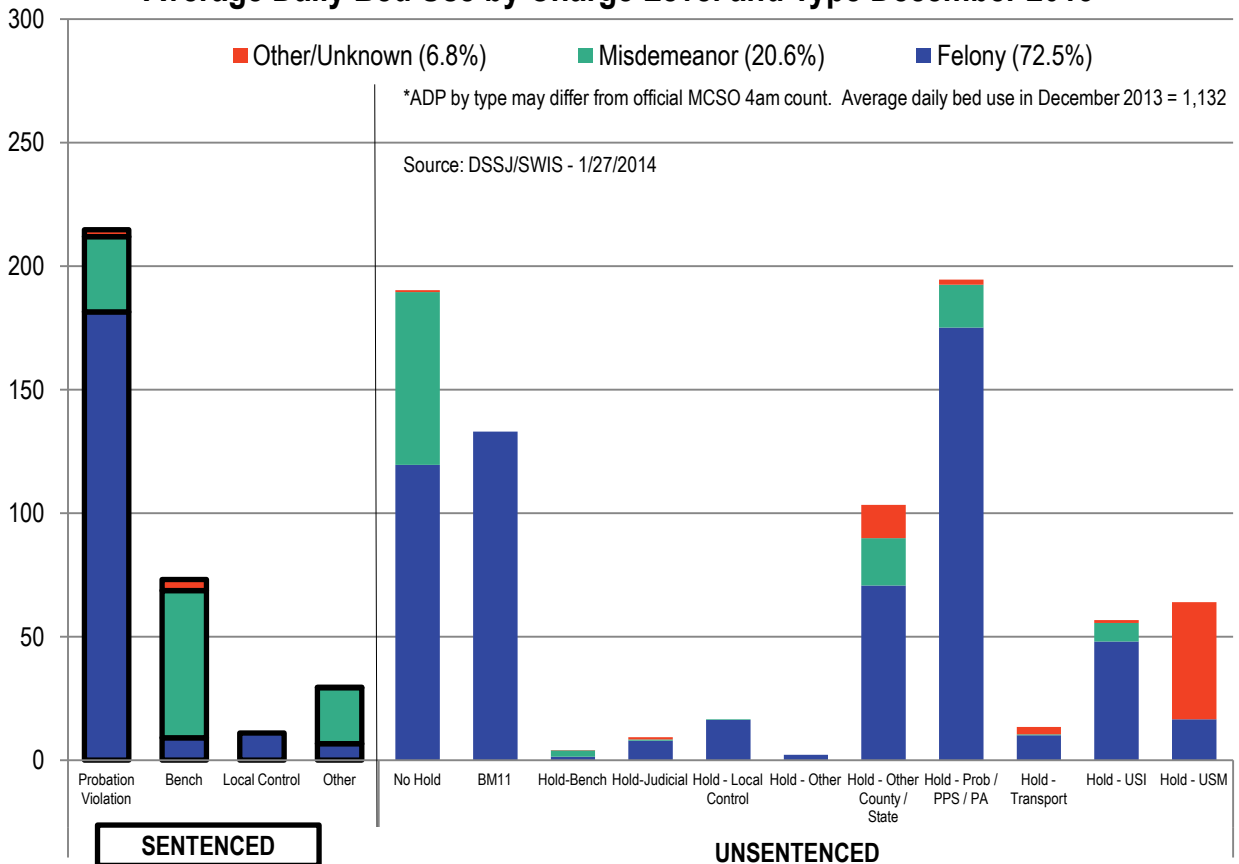
Contact Lauren Brown with questions or concerns [lauren.brown@multco.us](mailto:lauren.brown@multco.us)  
 Current and past editions of this report are available at [www.lpscc.org](http://www.lpscc.org)



## Average Daily Population by Custody Type\*



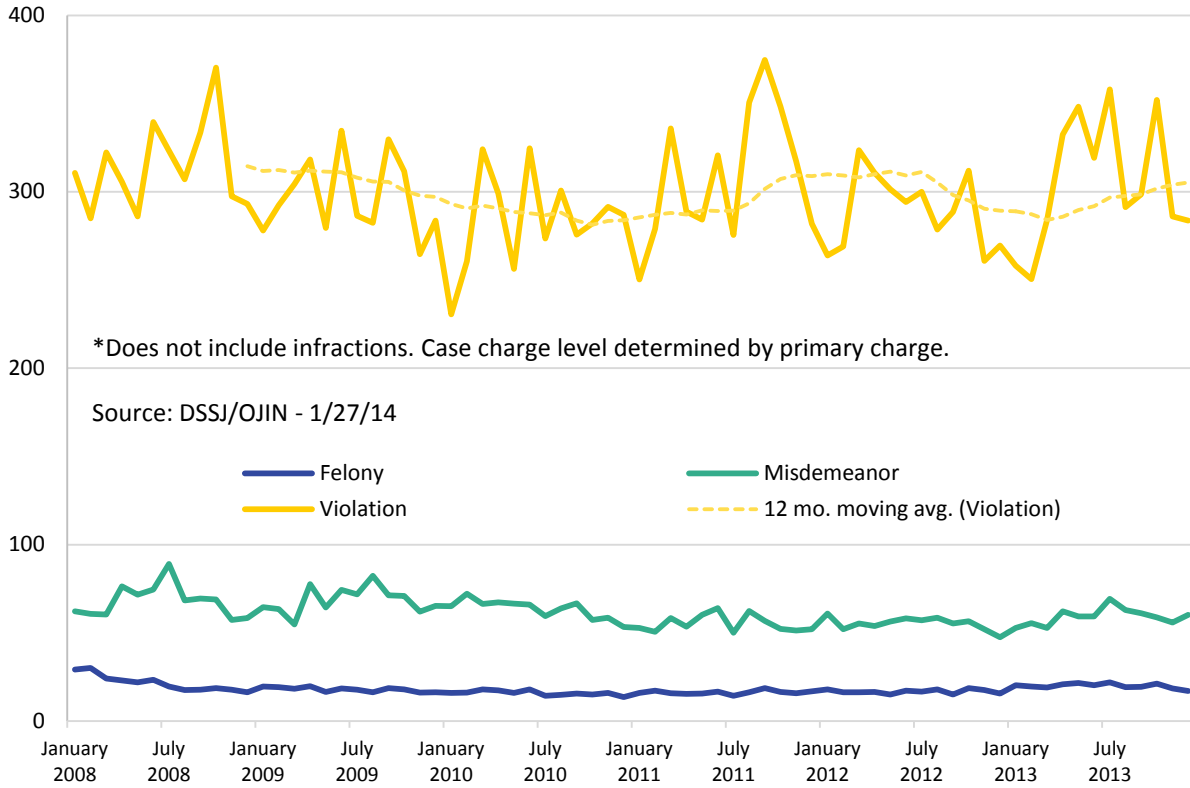
## Average Daily Bed Use by Charge Level and Type December 2013\*



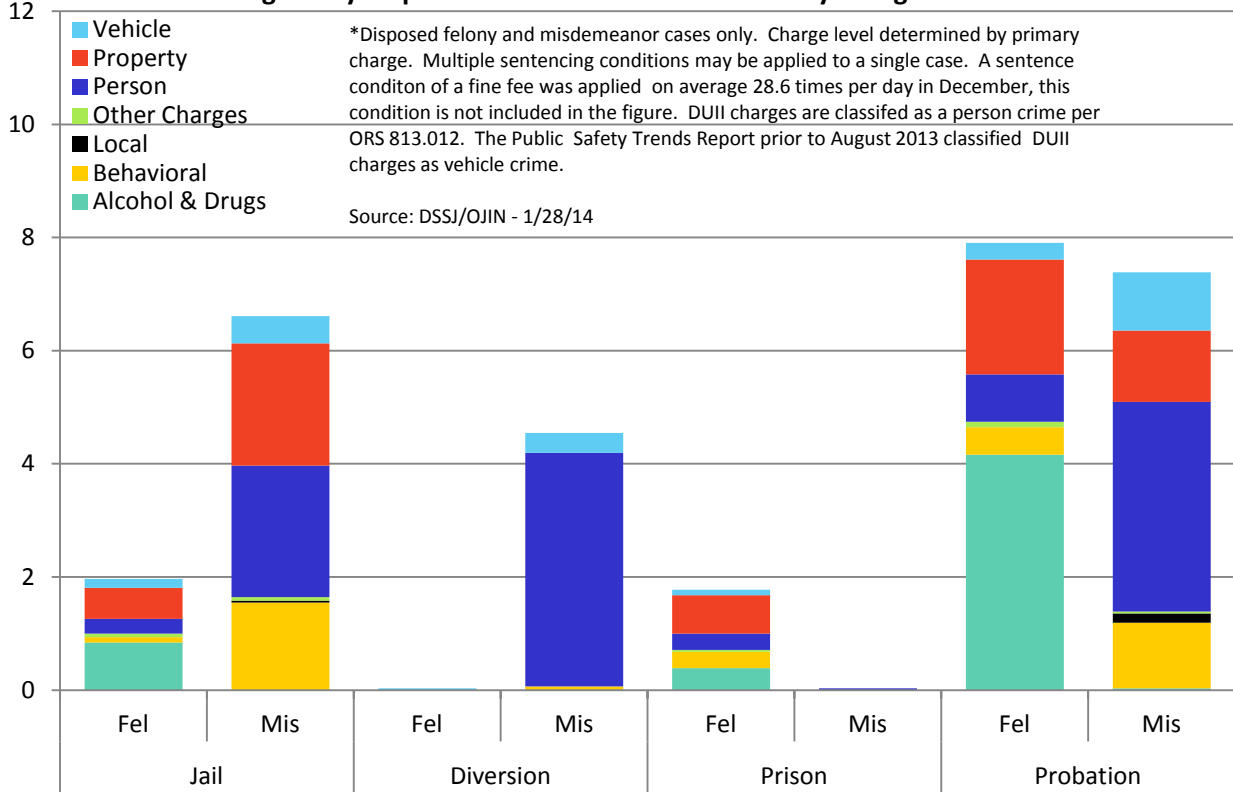
Contact Lauren Brown with questions or concerns [lauren.brown@multco.us](mailto:lauren.brown@multco.us)  
Current and past editions of this report are available at [www.lpscc.org](http://www.lpscc.org)



### Average Daily Cases Disposed by Charge Level\*



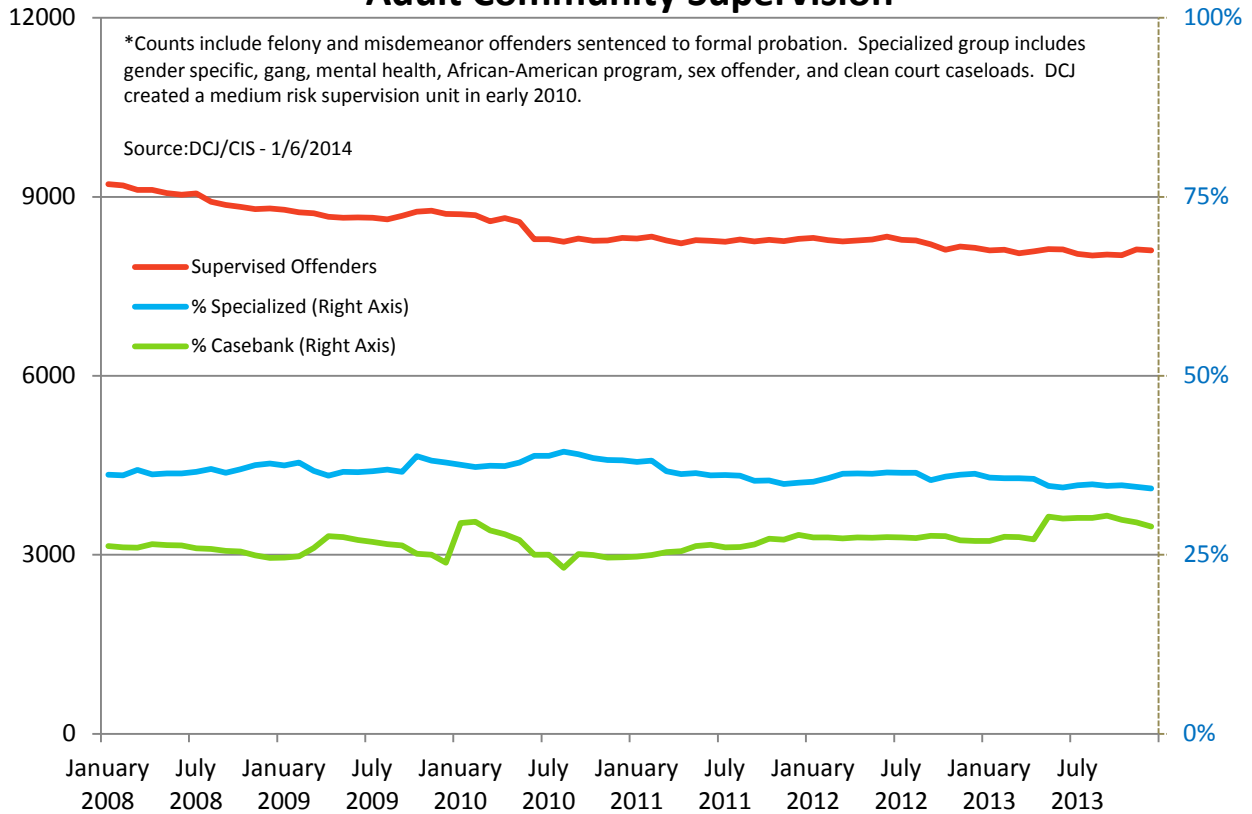
### Average Daily Disposed Case Sentence Conditions by Charge in December 2013\*



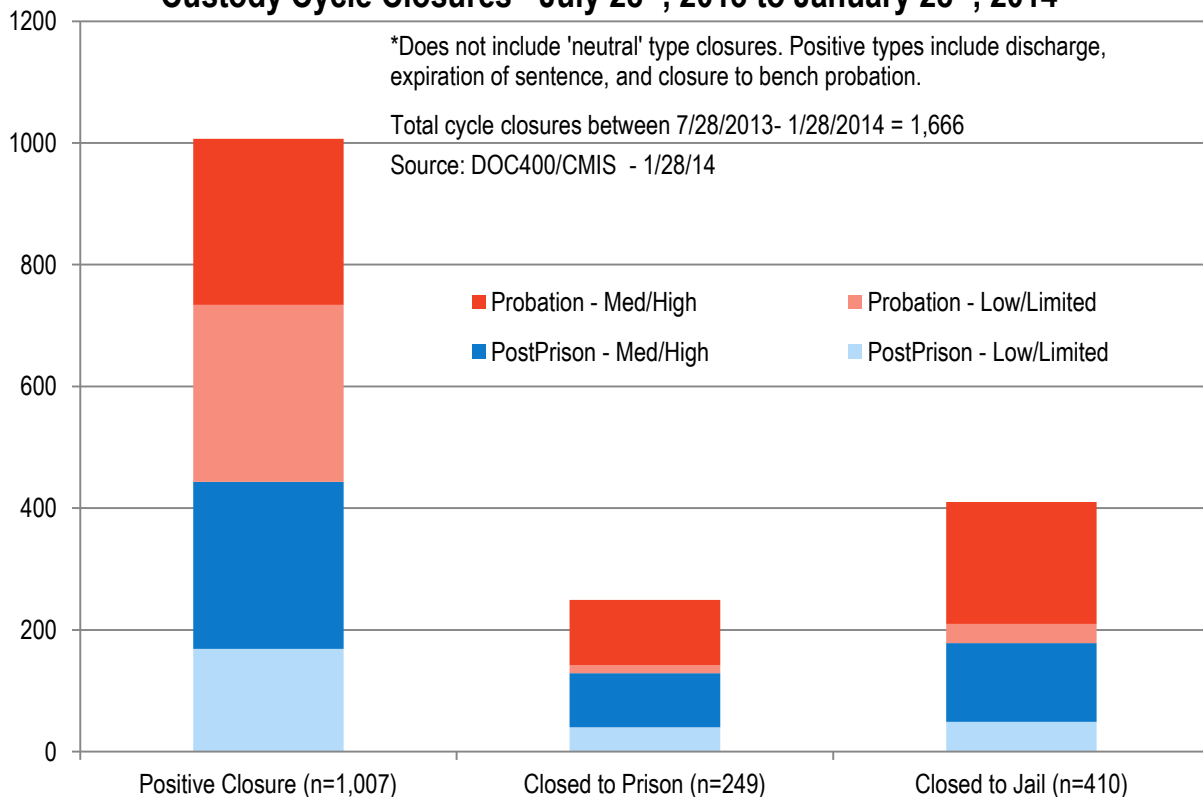
Contact Lauren Brown with questions or concerns [lauren.brown@multco.us](mailto:lauren.brown@multco.us)  
 Current and past editions of this report are available at [www.lpscc.org](http://www.lpscc.org)



### Adult Community Supervision\*



### Custody Cycle Closures - July 28<sup>th</sup>, 2013 to January 28<sup>th</sup>, 2014\*



Contact Lauren Brown with questions or concerns [lauren.brown@multco.us](mailto:lauren.brown@multco.us)  
 Current and past editions of this report are available at [www.lpscc.org](http://www.lpscc.org)

