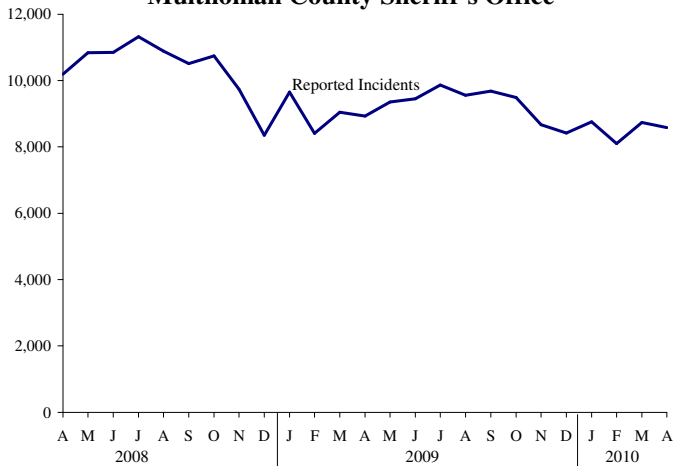


# LPSCC PUBLIC SAFETY BRIEF: APRIL 2010

## Reported Incidents

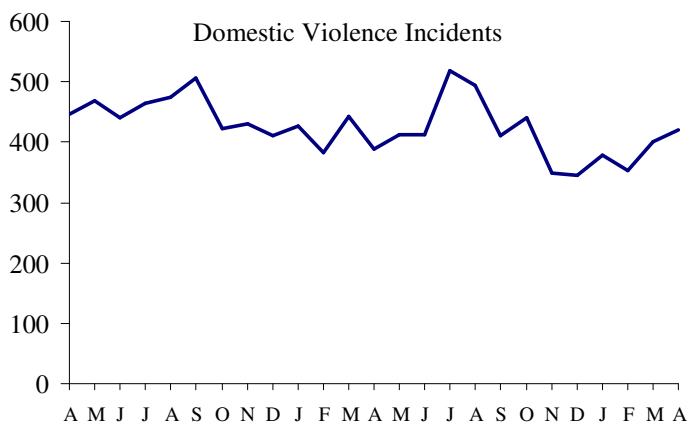
### Portland Police Bureau & Multnomah County Sheriff's Office



### Top 10 Incidents: April 2010

Larceny	1,725
Traffic	473
Vandalism	398
Property	390
Assault/Simple	383
Civil Hold-Detox	338
Disorderly Conduct	324
Domestic Problems	324
Burglary	313
Liquor Laws	311

### \*Monthly Spotlight\*



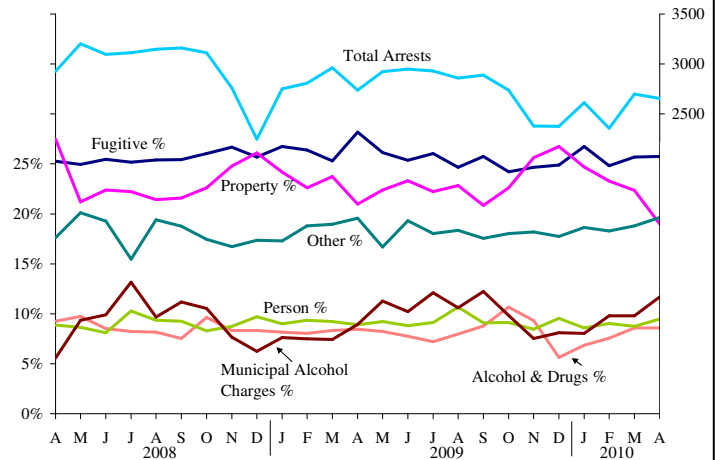
Domestic Violence may not be the primary offense associated with the incidents included in the chart. Domestic Violence Incidents appear cyclical, with peaks occurring during the summer months. Winter 2009-10 saw fewer incidents involving domestic violence than the previous winter; however, April 2010 had 40 more incidents than April 2009.

\*Incident data from PPB only

## Arrests

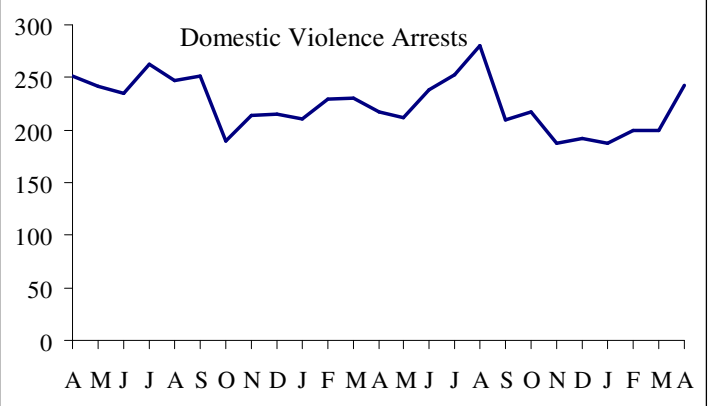
### Portland Police Bureau & Multnomah County Sheriff's Office

Type based on primary charge. Other category includes local, vehicle, and behavioral charges.



\*Arrest Data is for PPB and MCSO only

### \*Monthly Spotlight\*



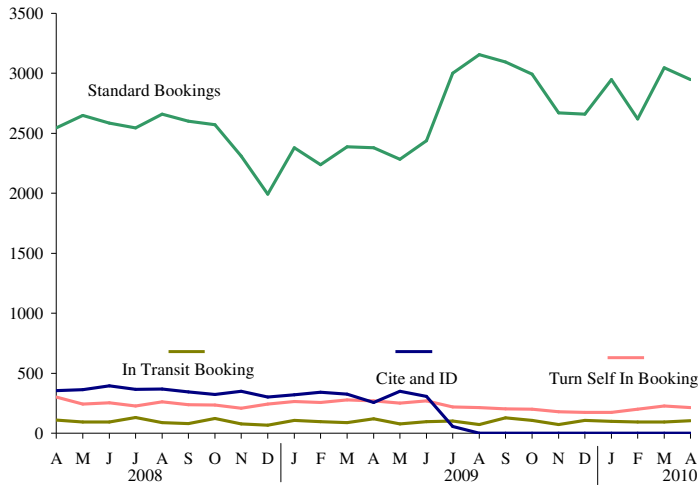
This chart includes any arrests made associated with a Domestic Violence offense.

**Note:** This report is produced by staff to Multnomah County's Local Public Safety Coordinating Council (LPSCC) and is undergoing revisions to its topic areas, statistics, graphs, and format. Revisions should be completed in time for the publication of the June 2010 Brief. Feedback, suggestions, and questions can be directed to [lpssc.staff@co.multnomah.or.us](mailto:lpssc.staff@co.multnomah.or.us).

Unless otherwise noted, the data in this document was collected from DSS-Justice, Multnomah County's public safety data warehouse.

# LPSCC PUBLIC SAFETY BRIEF: APRIL 2010

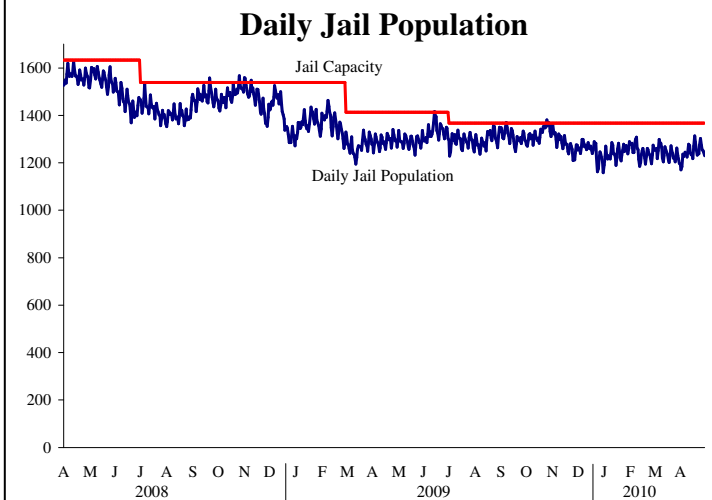
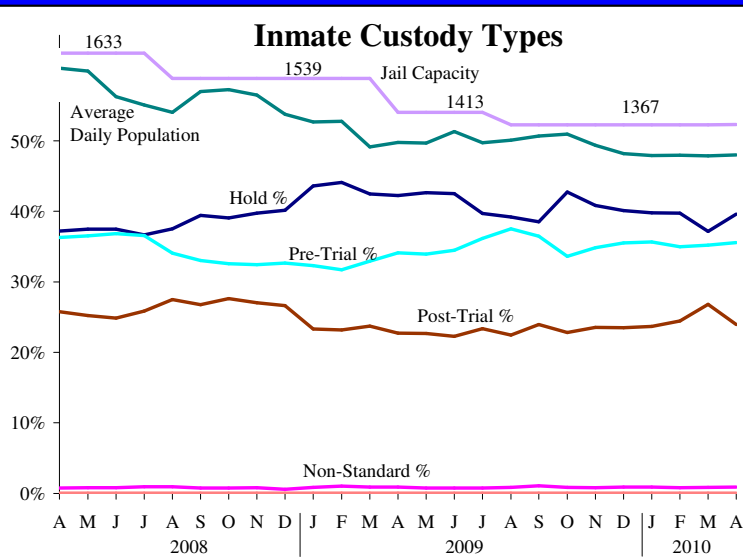
## Multnomah County Jail: Booking



April 2010	
Standard Booking	2949
In-Transit Booking	103
Turn Self In Booking	212

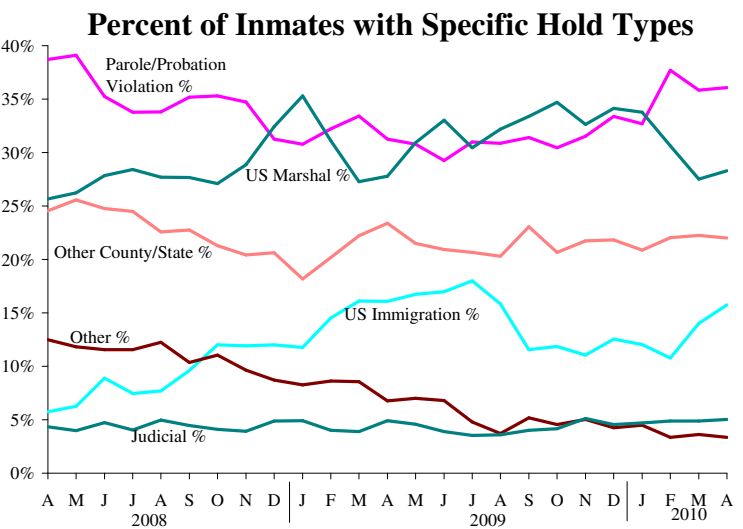
MCSO policy changes in July 2009 of ended the practice of **Cite and ID** booking and expanded the booking criteria to all persons arrested for a felony or misdemeanor crime. **In Transit** bookings refer to inmates who are temporarily housed at a M.C. facility on their way to another jurisdiction. **Turn Self In** bookings include persons who bring themselves into custody and is the coding used for the TSI weekender program in which inmates serve out their sentences on the weekends.

## Multnomah County Sheriff's Office Jail Population



### April 2010 Average Daily Jail Population

All inmates	1256
Pre-Trial	36% 446
Post-Trial	24% 301
Non-Standard	1% 11
Holds	40% 497

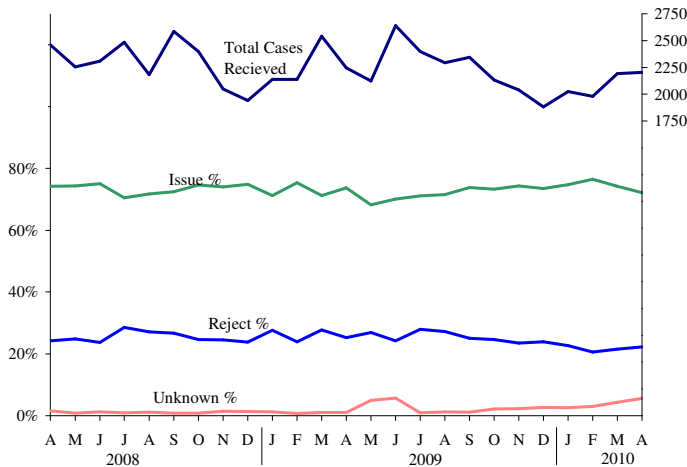


Notes: Inmates can have zero, one, or two holds. The percent total for "Percent of Inmates with Specific Hold Types" chart is greater than 100% because some inmates have two holds. The chart shows only the holds for inmates listed with custody type Hold. Inmates with custody type Pre-Trial, Post-Trial or Non Standard may have holds listed, but they are excluded from the chart. The number of US Marshal holds differs from the count reported to the federal government for the purposes of reimbursement.

# LPSCC PUBLIC SAFETY BRIEF: APRIL 2010

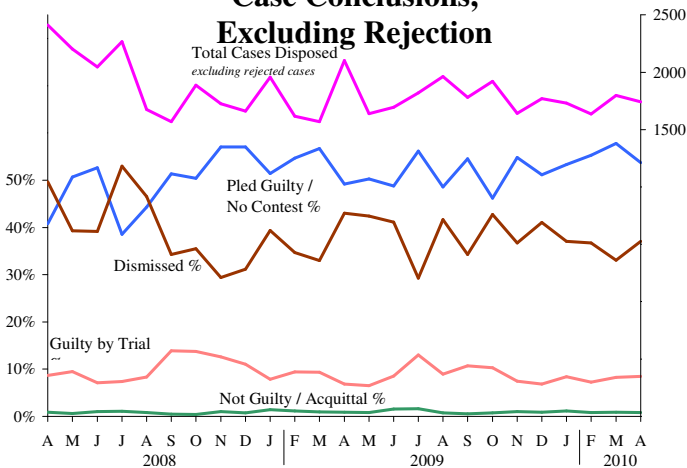
## Charging and Disposition of Cases

### Multnomah County DA's Office Charging Decisions for All Cases Received



The most recent months show an increase in Unknown cases because these cases are pending review by the DA's office.

### Case Conclusions, Excluding Rejection



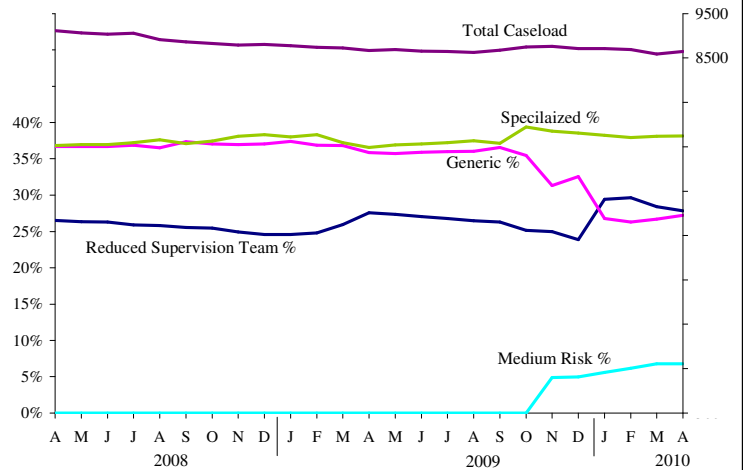
Data for the most recent months shows a decrease in the total cases disposed because some cases still remain open, awaiting action by the courts, the police, or the DA's office.

In April 2010, there were 541 cases disposed by rejection that were never prosecuted. They are not included in this chart.

The Dismissed category includes cases where the defendant has successfully completed a diversion program, such as DUII diversion or domestic violence diversion.

**Revision note:** A chart describing sentencing outcomes will be included in future Briefs.

## Adult Community Supervision Caseloads



The **Specialized Caseloads** focus on specific populations of high-risk offenders, such as domestic violence and sex offenders.

The **Generic Caseload** consists of high-risk high-need clients who are not part of a specialized caseload.

The **Reduced Supervision Caseload** focuses on the lowest-risk offenders and involves minimal contact between PO and client.

The **Medium Risk Caseload**, created in November 2009, is for medium-risk clients who receive fewer client visits and less treatment and DCJ services than generic caseload clients.

### Specialized Caseload Snapshot April 2010

All Specialized Caseloads		3298
Sex Offender	29%	941
Domestic Violence	28%	924
High Risk Drug Unit	16%	518
Gang	8%	277
Mental Health	6%	214
Gender Specific	4%	147
African American Program	3%	115
Specialized Supervision Team	3%	98
DUII	2%	64

**Revision Note:** Charts describing the DCJ's work with youth will be included in future Briefs.

\*Data for Adult Community Supervision Caseloads are provided by the DCJ