



Multnomah County LPSCC


Oregon

Outlook for Oregon's Prison Population

(Preliminary October 2013: Not for Redistribution)

September 10, 2013

Mark McMullen
State Economist, Director
Office of Economic Analysis



The Role of the Office of Economic Analysis

- Executive Order 95-06 and ORS 184.351 direct the Department of Administrative Services and the Corrections Population Forecasting Advisory Committee (made up of public safety stakeholders & experts) to produce a prison forecast twice a year
- Given current laws and practices of public safety officials, OEA creates a preliminary forecast for the prison, parole, PPS and local control populations based largely on the overall demographic outlook and trends in the existing prison population
- Changes to the public safety environment such as new laws or changes in practices and crime rates are analyzed by the Advisory Committee with technical support from the CJC. Any assumed impacts are folded into the population forecast. As these changes begin to appear in the data over time, OEA updates the initial impact estimates as necessary
- In addition to our traditional forecast, OEA's analytics must improve in order to help implement potential changes to the system. In particular, we need to delineate the data needs of local public safety officials who will be called upon to implement any new processes going forward



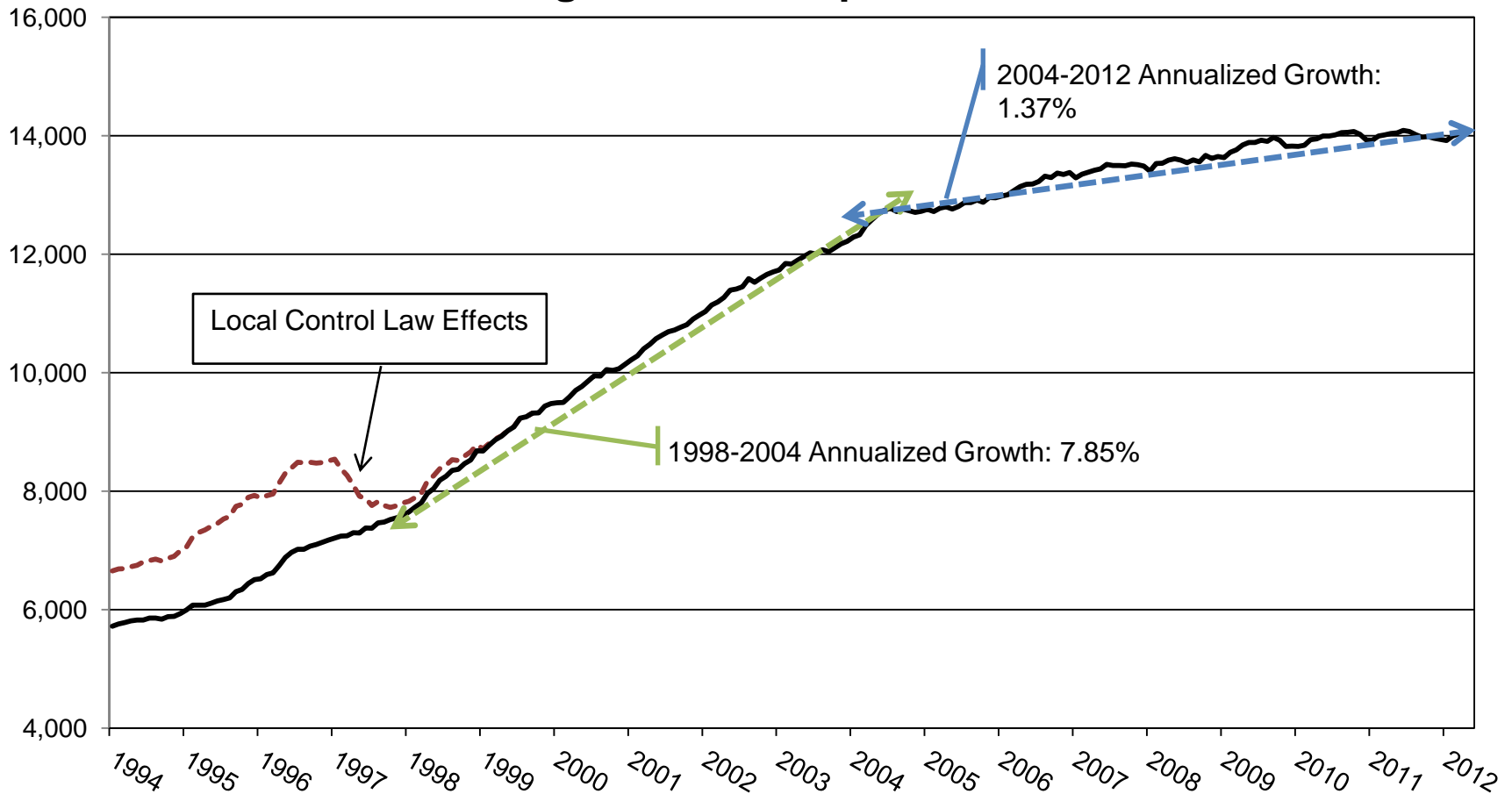


Oregon

Historical Prison Population Forecast Overview

Two Different Eras of Population Growth

Oregon Prison Population*



*Head count of prisoners on the first day of each month. Pre-2000 data adjusts for local control law effect

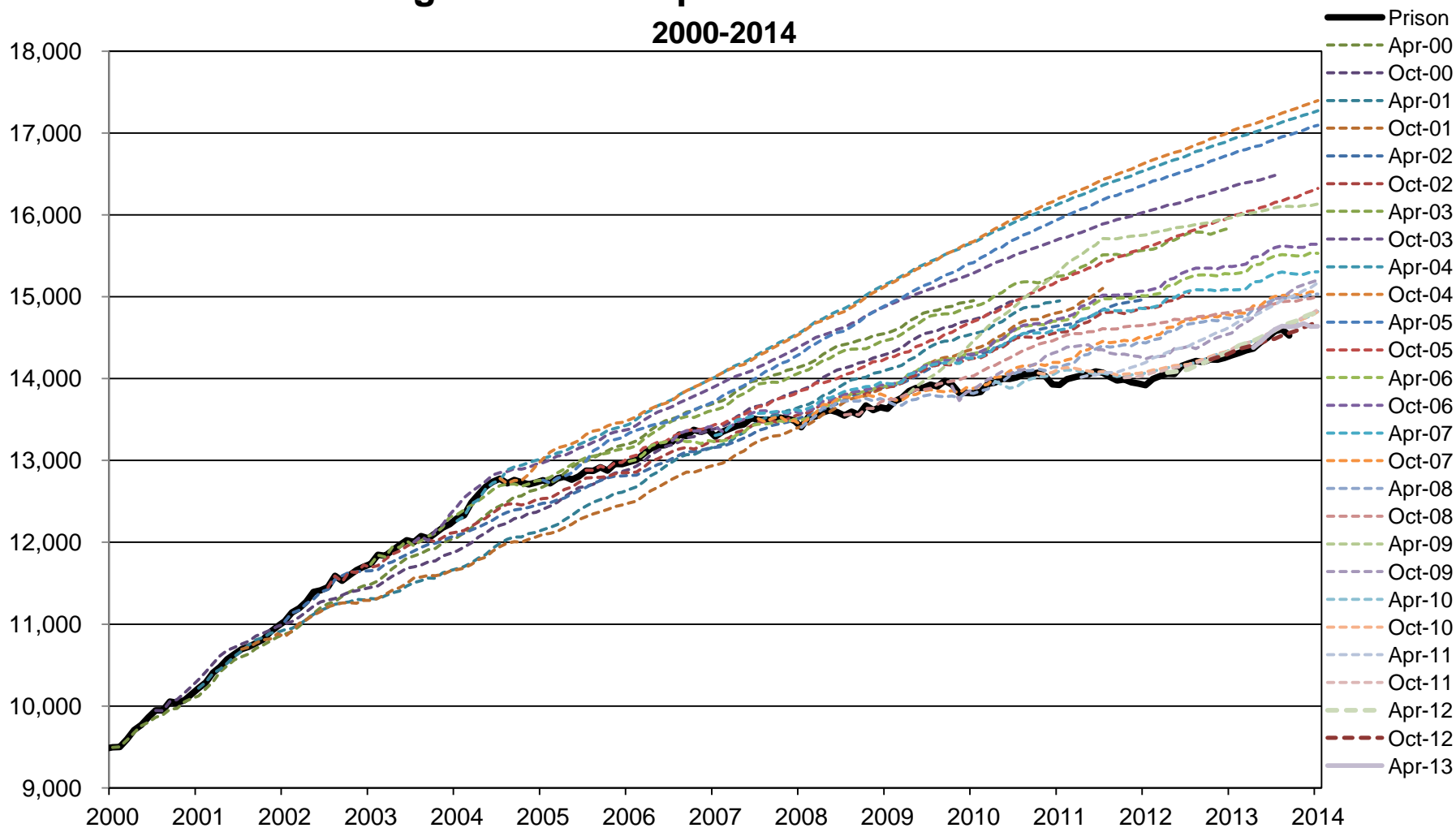




Forecast Evolution

Oregon Prison Population and Forecasts

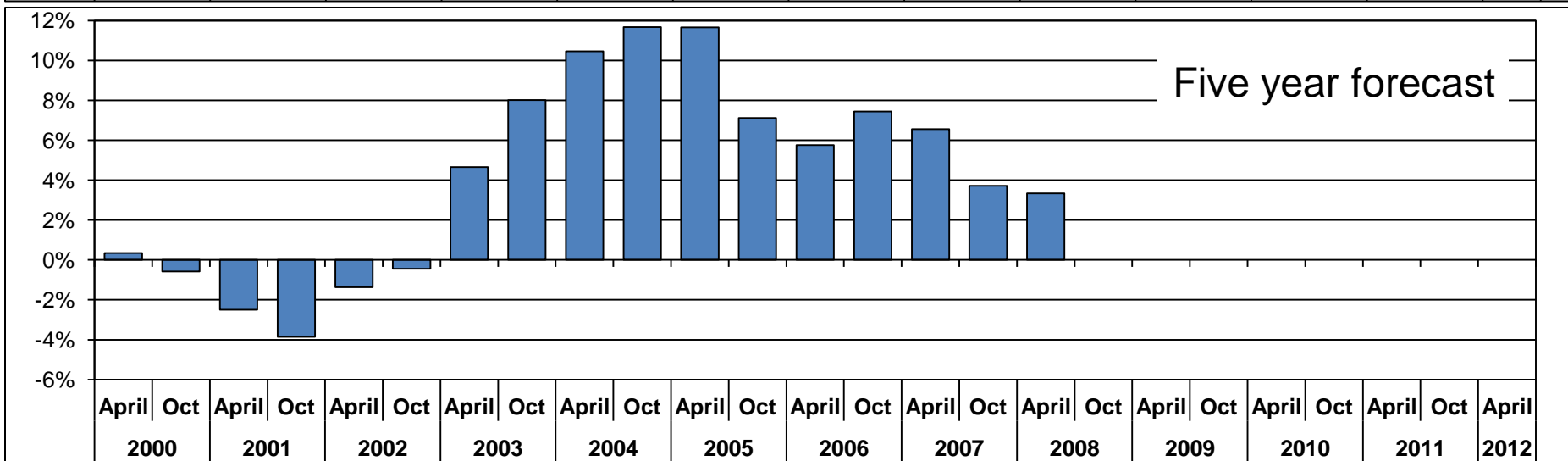
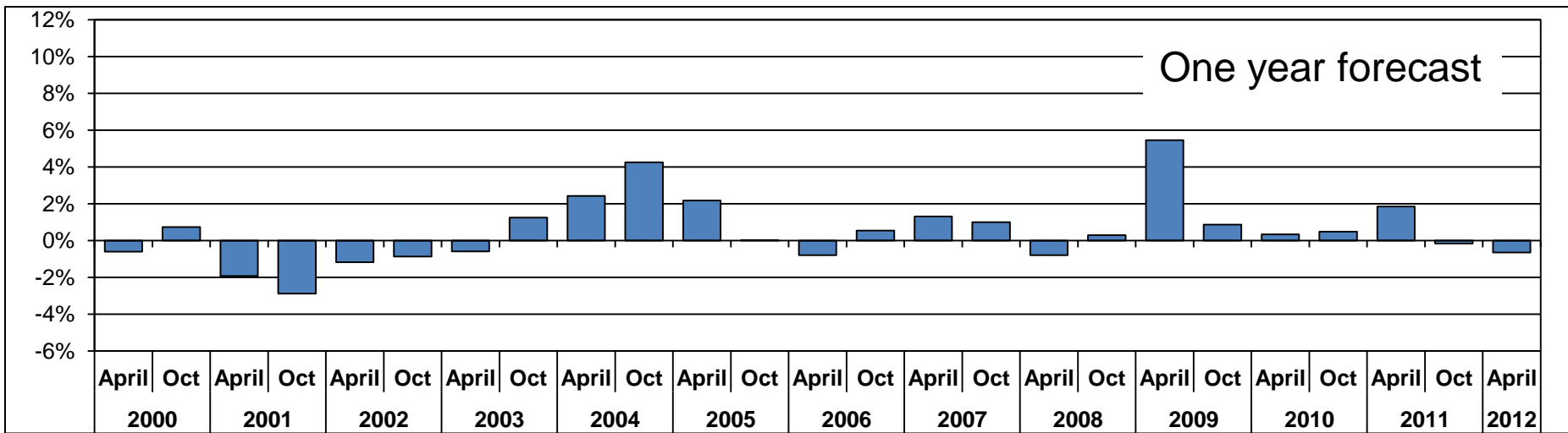
2000-2014





Forecast Accuracy

(Percentage difference from forecast)



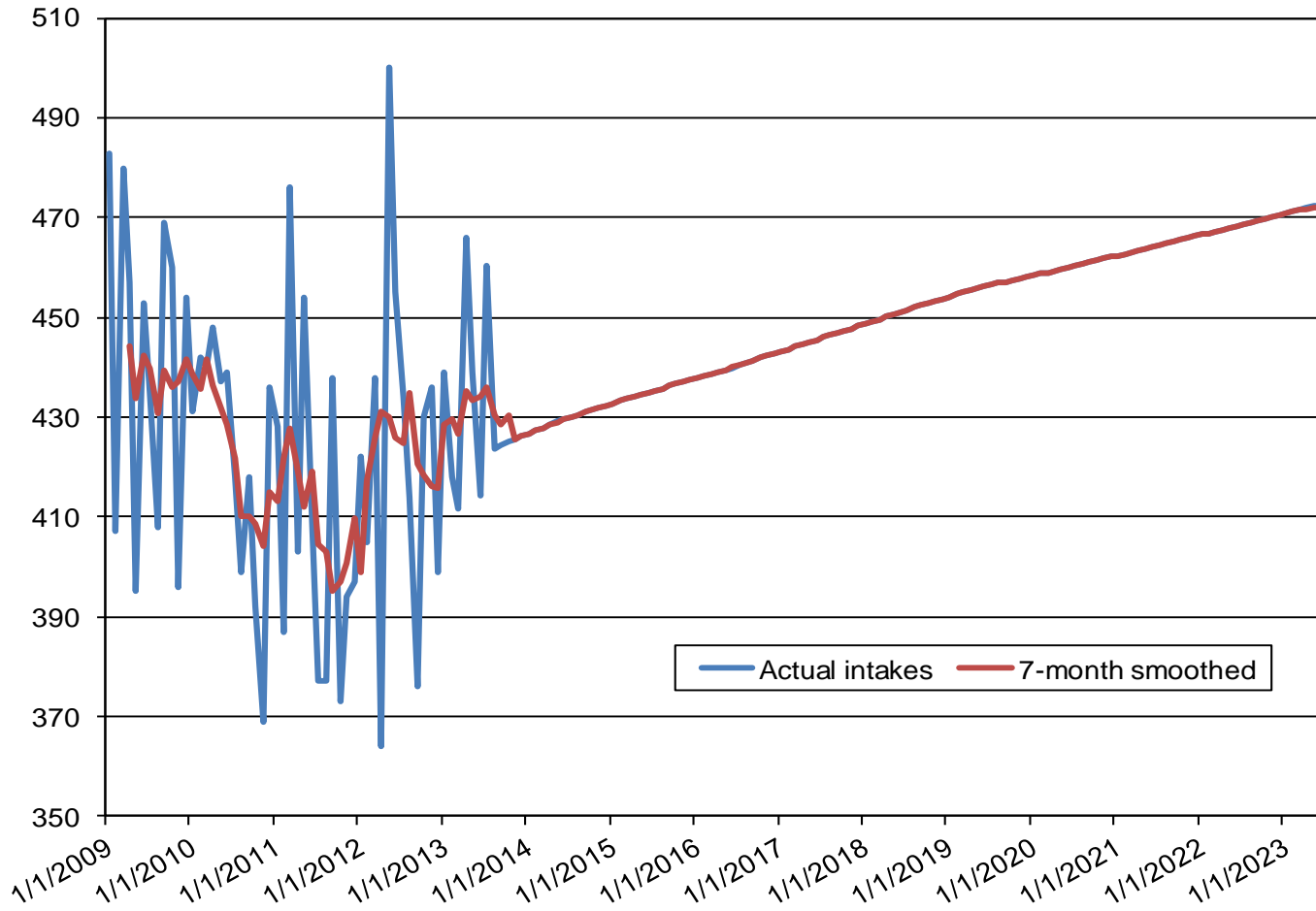


Oregon

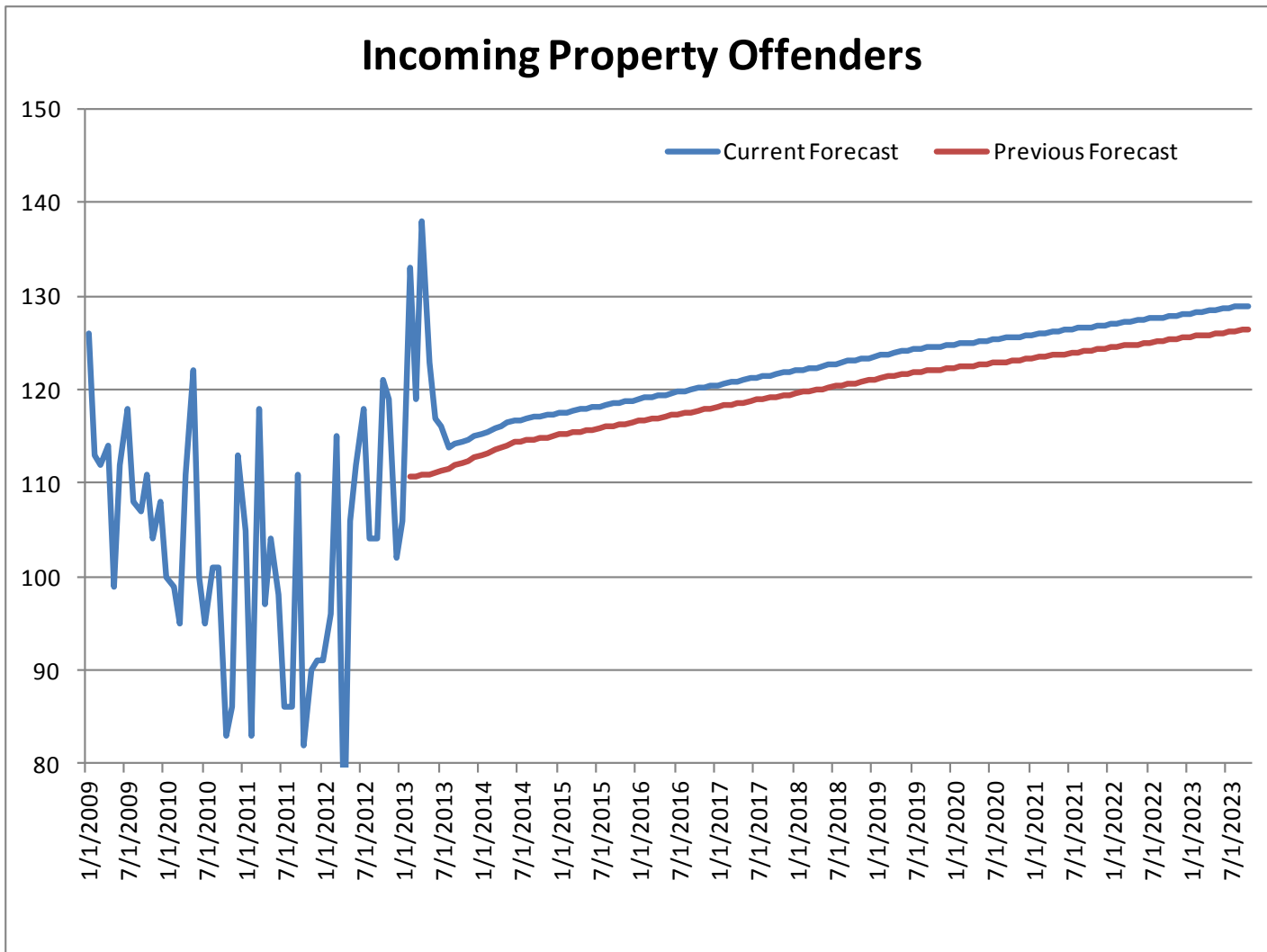
Building the Preliminary Outlook

Prison Intakes Drive the Long-Run Population Outlook

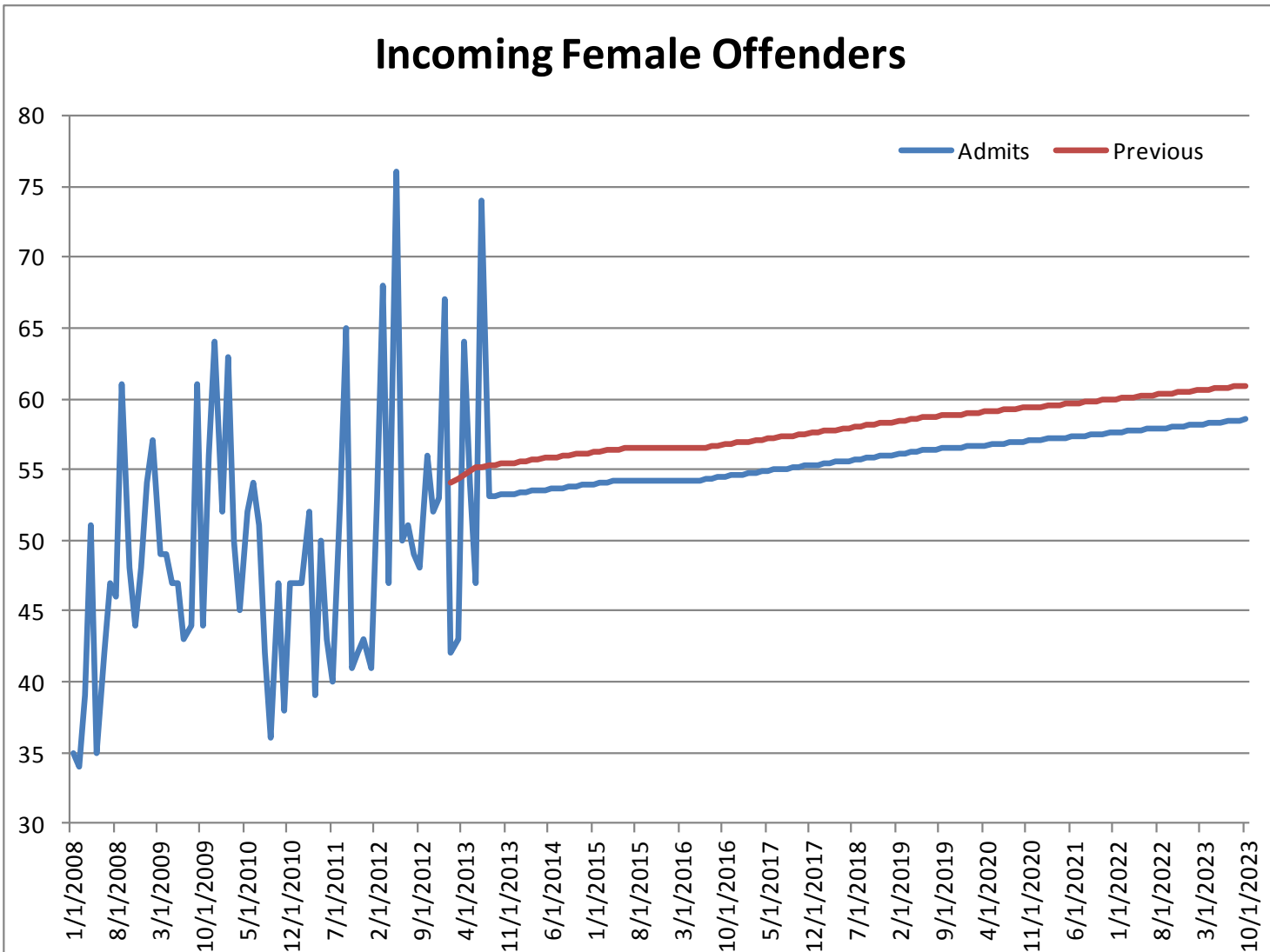
Oregon Monthly Prison Admissions



M57 Sentencing Reforms Are Playing Out



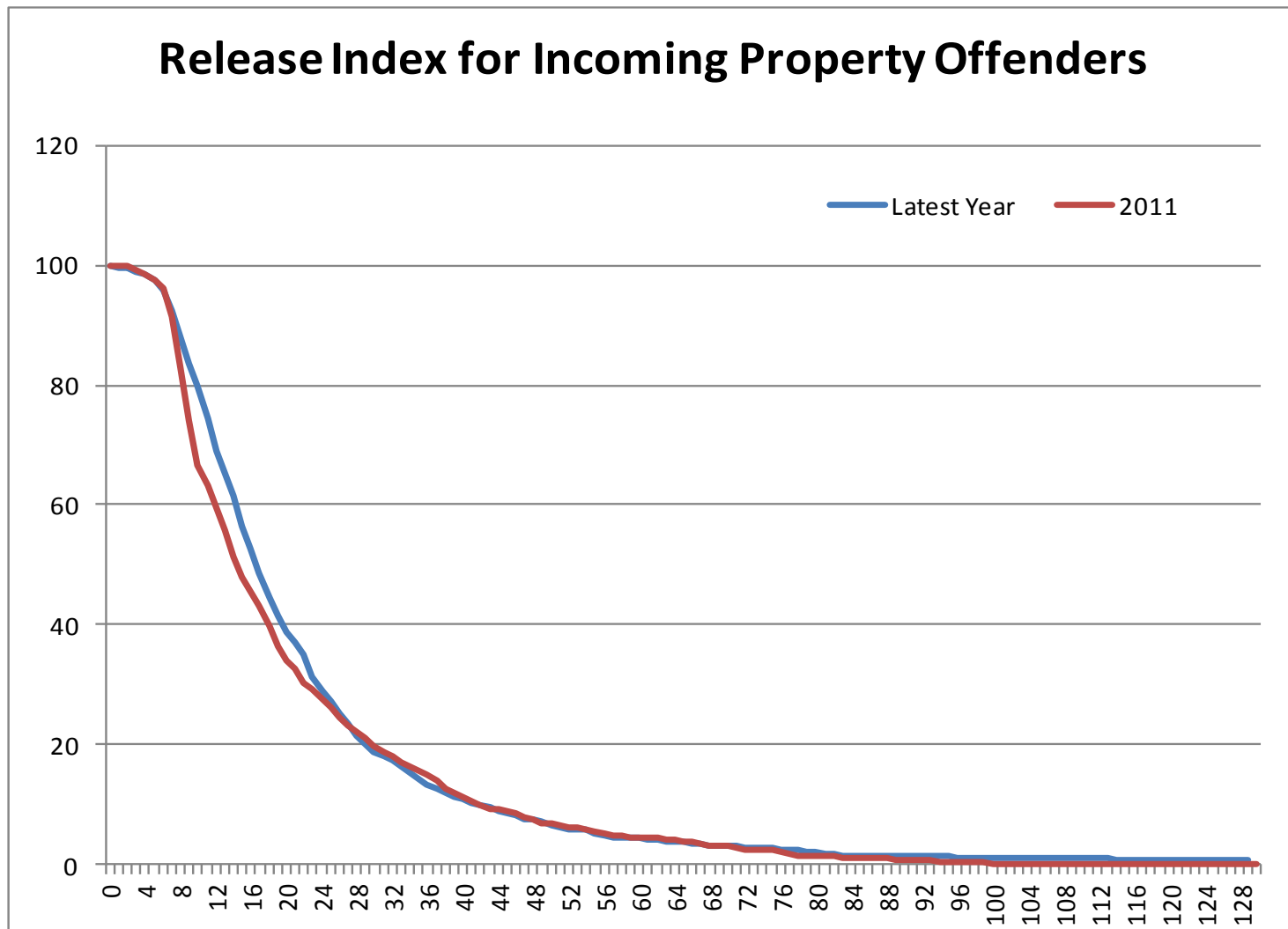
Rapid Growth in Female Intakes Has Slowed In 2013





M57 Reforms Are Also Evident in the Timing of Releases

(Share of current population remaining in prison)



Months

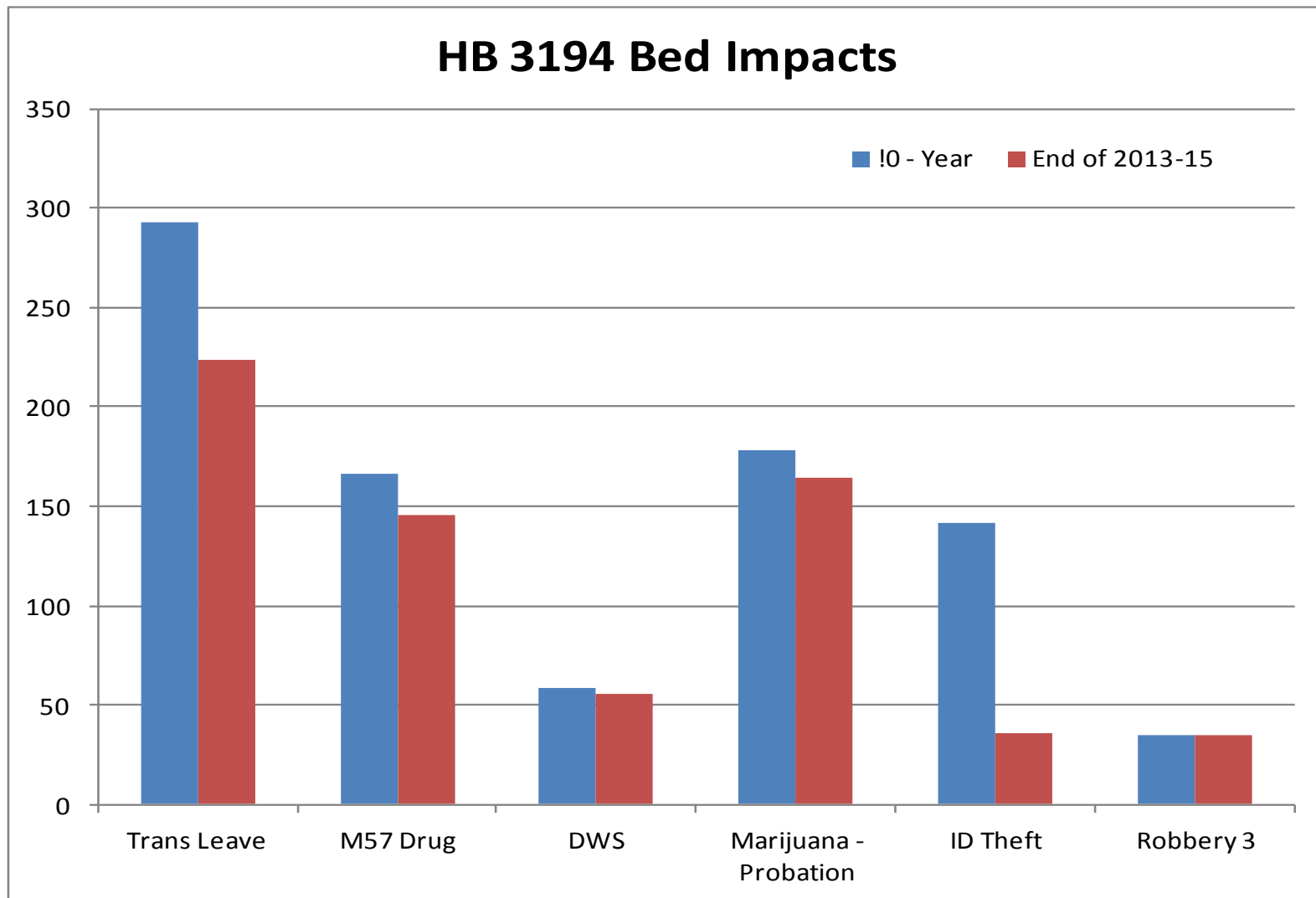


Oregon

Incorporating New Policy and Other
Environmental Changes

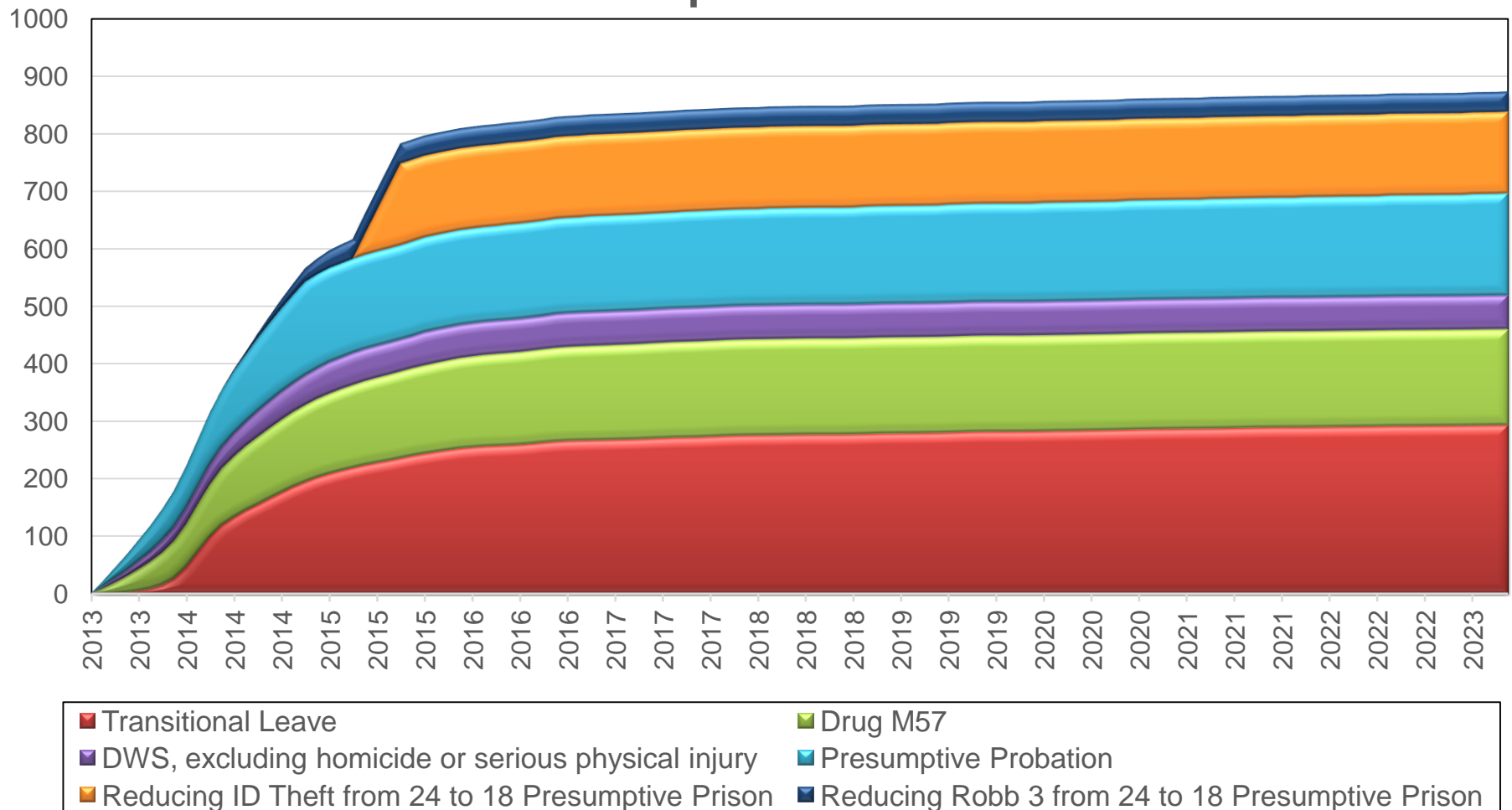


Estimated Prison Population Impacts of HB3194



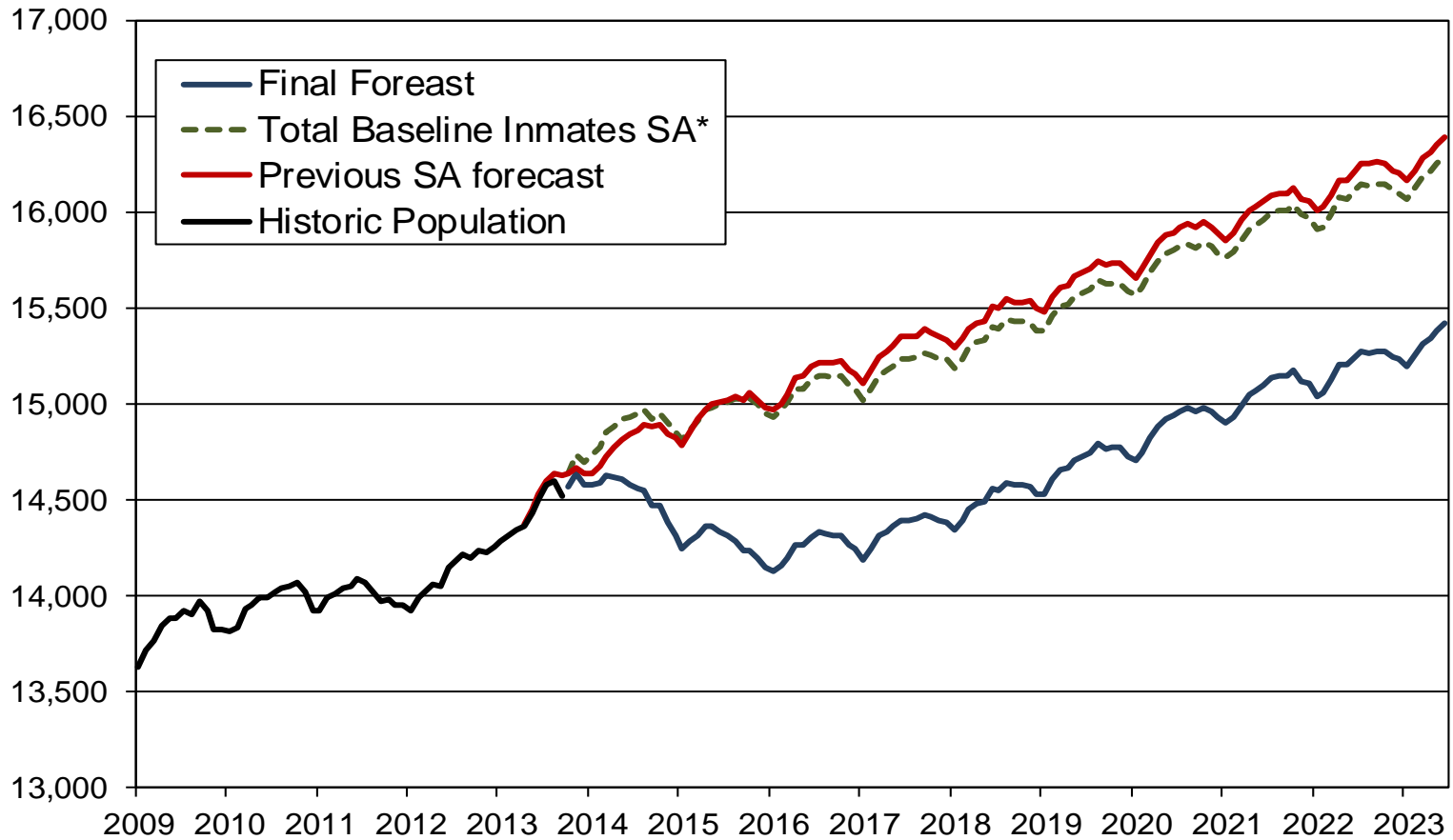
Estimated Prison Population Impacts of HB3194

Estimated impacts for HB 3194



Reforms Delay the Need for New Facilities by 5 yrs

Oregon Inmate Forecast



**Baseline forecast assumes no new law changes*





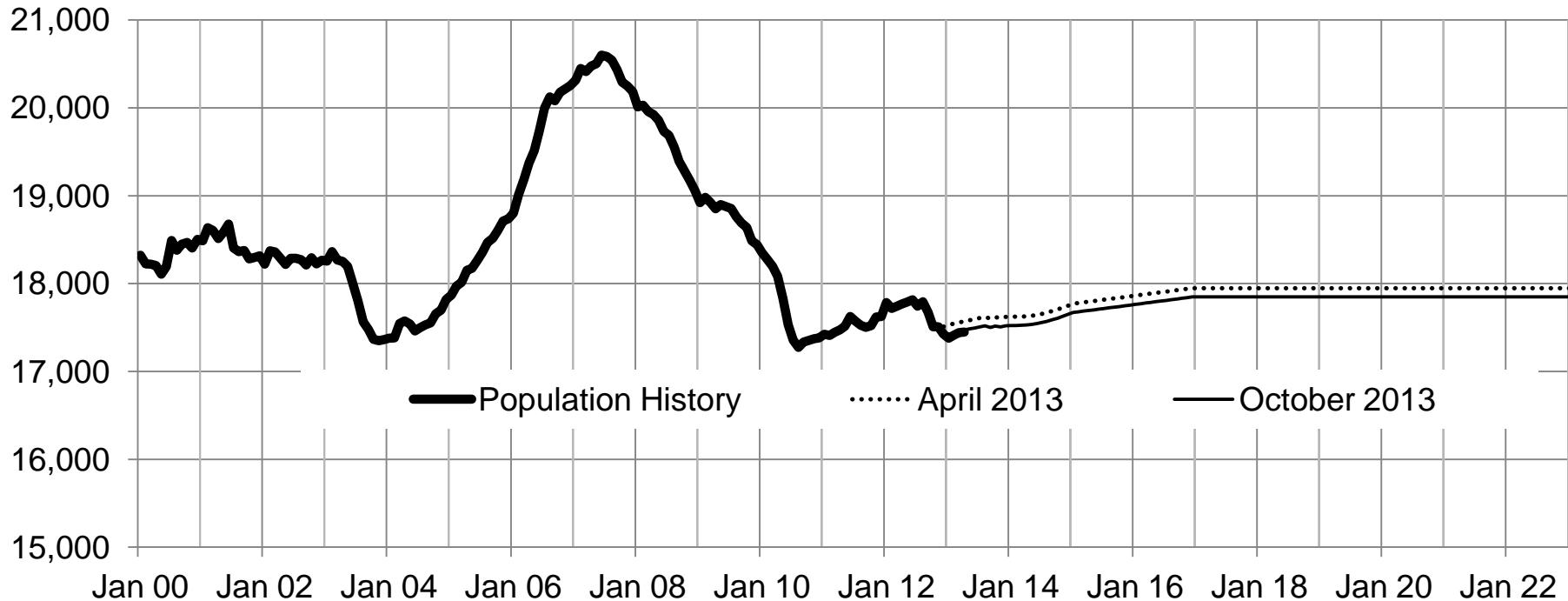
Oregon

Preliminary Local Population Forecasts

Local Population Forecasts: Probation Remains Stable



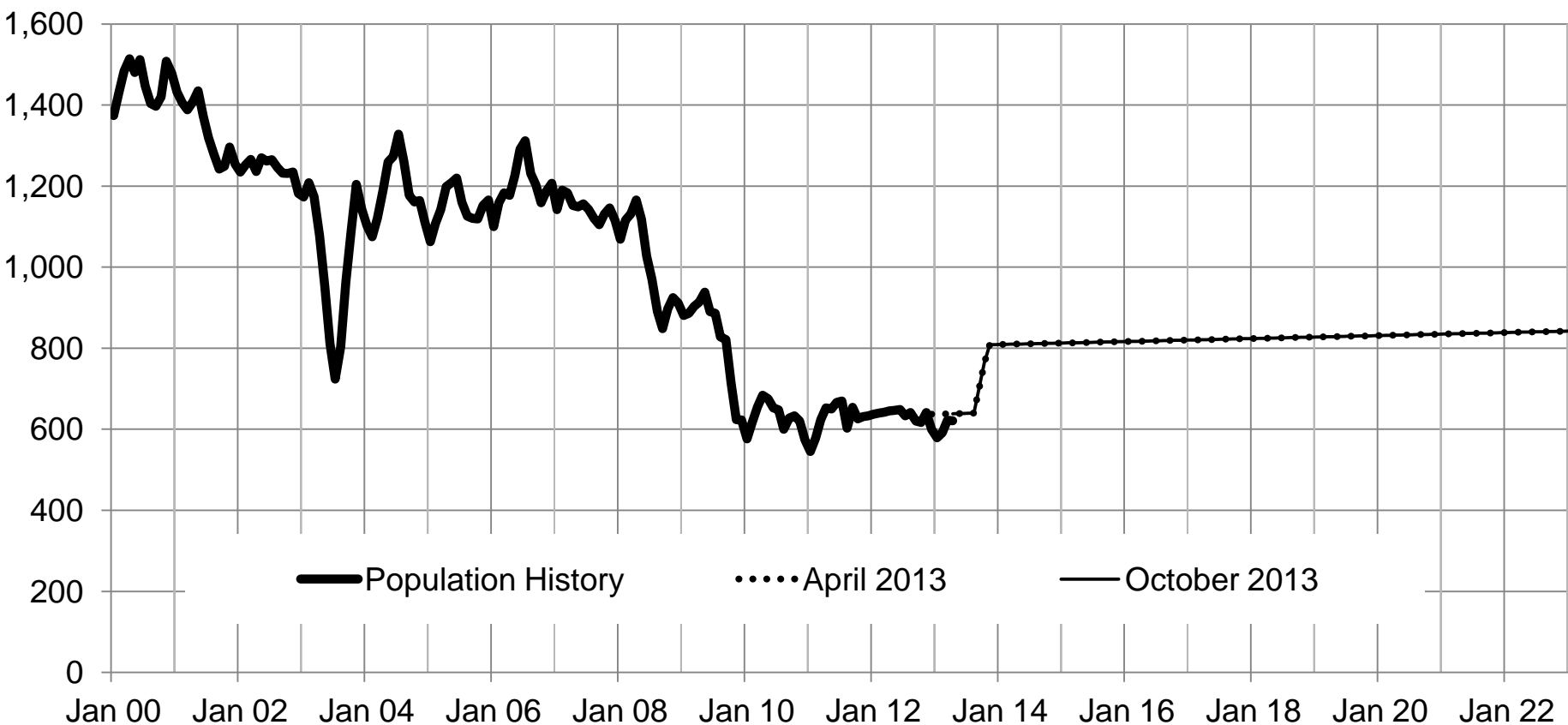
Probation Population





Local Population Forecasts: Sunset of 60-Day Cap on Technical Violations

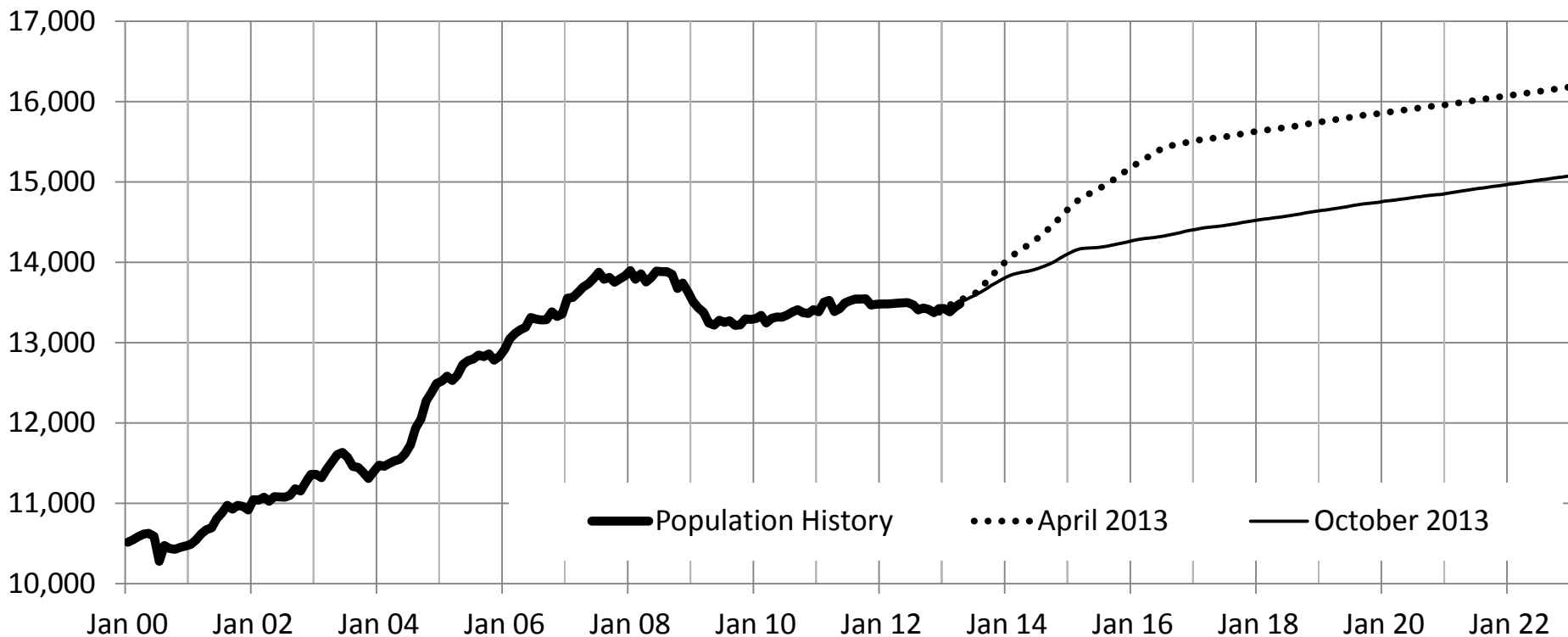
Local Control





Local Population Forecasts: “Inactive” Status Will Not Sunset

Parole/Post Prison Supervision





For More Information

Standard Contact:

155 Cottage Street NE

Salem, OR 97301

(503) 378-3405

oea.info@state.or.us

www.oregon.gov/das/oea

Social Media:

oregoneconomicanalysis.wordpress.com

@OR_EconAnalysis

