

# KAWeid Kan Ong Dipwisoun Sosohng Wet Nan-IHMW Me AdaneKi iHealth

February 7, 2022 4:40 PM POHNPEIAN

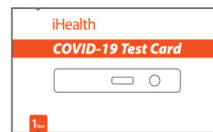
## Kesempwal en wehwehki mwohn komw tepida

- Wadek iren kaweid kan koaros mwohn omw tepida.
- Mie iren kaweid kan me mih nan dipwsoun sosohng o (test kit). Kilang iren kaweid ko pwehn kalaudehla omw wehwehki.
- Ma komw anahne sawas, a komw eker toahktehn omwi kousapw (Community Health Worker).
- Ma komw doadoahngki ni ahl me pwung, a mehn sosohng wet sohte pahn kamedek.
- Omwi mehn sosohng o kak doadoahk pak ehute. Dehr pwurehng doadoahngki mehn sosohng o.
- Dehr doahkehki pehm en mesen koatin ni tuhkeo de mwohn card o.
- Widen pehm en mwahu **mwohn** oh **mwurin** omw doadoahngki mehn sosohngo.



## 1. Kaunopada dipwisou kan materials

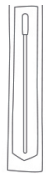
- Kadingada ehdo oh kihsang
  - » Card en sosohng (test card) me mih nan ehdo
  - » Tube me audaudki pihl o (extraction buffer)
  - » Kisin tuhke me koatin (swab) mih ie o sang ni kidipe o
- Kihdi dipwisoun doadoahk koaros nan kidiparail lau komw anahne doadoahngki.
- Ni ahnsou me komw onopada, a komw kihsang test card o sang nan ehdo. Kihdi pohn ehu tehpel de counter me patapat me mih mwohmwi.



Ehu test card en COVID-19 nan ehu ehd



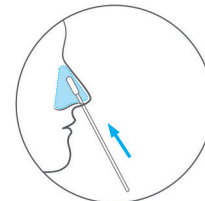
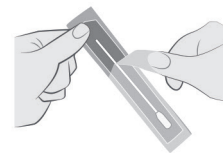
Ehu tube



Ehu tuhke me koatin mih ie (swab)

## 2. Kihpene sample kan

- Kihsang kidipen tuhke me koatin mih ie o. **Kanaiehng ken dehr doahke mesen tuhke koatin o.** Komw dehr kesehla kidipeh o.
- Kihong tuhke me koatin mih ie o ni ehu pwoaren tumwomwen. Dehr nohn kihlong loal. Kihlong tuhke koatino mwein inch 0.6 (1.5 cm) lel inch 0.8 (2cm).
- Padikihdi tuhke koatino nan loalen tumwomwen. Iris wawai koatin o nan tumwomwen ni mwomwen pwonopwon ehu.
  - » Pil ehu **iris pak 5 de tohto sang** ni mwomwen pwonopwon ehu nan loalen tumwomwen.
  - » E pahn reireiki **second 15**.
  - » Tehk kanaiehng me komw padikihdi mwahu koatin o ni wasa koaros nan loalen tumwomwen.
- Doadoahngki tuhke koatin me komw doadoahngki o oh pwurehng wi kahk pwukat koaros ni pali teio en tumwomwen.



Kihlong nan tumwomwen inch silikis pahieu (3/4)



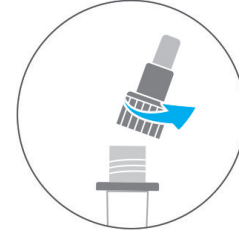
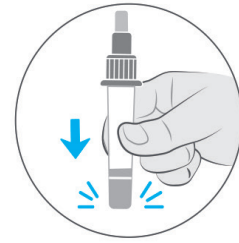
Wawai ni omw piroasi pak 5



Wawai ni omw piroasi pak 5

### 3. Ahnsoun koadoahke sample o

- Kolada tube o pwehn kesinenda inen. Suk ekis panahngin tube o pohn tehpel o pak 2 de 3.
- Pire pweinen pwoatol o me poh orens (orange) pwehn kadingada pwoatol o. Kanaiehng komwi en dehr udekihla pihlen pwoatol o.
- Kihlong mesen tuhke koatin o me omw sample o mih ie nan tube o **lao e lel kepim tube o**.
- Ari tuhke koatin o nan pilen tube o **pak 15**.
- Padikpene tube o ni tuhke koatino ni omw waikiei tuhke koatino sang nan tube o. Met pahn kahreiong ekei pilen koatino en kohiei. Tuhke koatin o kak kowong nan kidipeo oh koskosla.
- Kapwureieng pweinen pwoatol me orens o (orange).



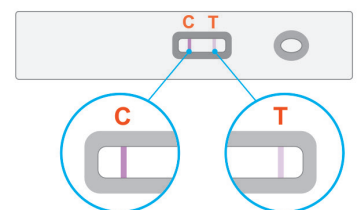
### 4. Kihong sample o oh awih

- Pire pweinen tube me titik oh pwetepwet o lao e kohsang.
- Wekidedi tube o oh padik pwe **dingiding 3** en omw sample o en kohlong nan kisin pwoar me mih nan card en sosohng o (test card).
- Kapwurehiong pweinen tube me titik oh pwetepwet o. Kihdi tube o iangahki tuhke koatin o pwehn koskosla.
- Kihdi card en sosohng o (test card) en mih erein minit 15. Dehr doahke de kamwekid.



### 5. Wadek dahme dierek

- Mwurin omw awihki minit 15, komw kak tehk dahme pwarada ni omw mehn sosohng o. Komw anahne tehk dahme pwarada ni omw sosohng o **nan pwungen minit 15 lel 30** mwurinte omw kihong dingiding ko ni card o. Dehr wadek dahme pwarada ni cardo **mwurin minit 30** dauliala.
- Omw mehn sosohng o (test) pahn **POSITIVE** ma komw kilang lain riau. Ehu pahnangin mesen nting "C" a ehu pahnangin mesen nting "T."
  - » **Uhdahn tehk kanahieng!** Lain me mih pahnangihn mesen nting "T" o, kak en **uhdahn sohte sansal**. Sohte lipilipil lain me komw kilang pahnangihn mesen nting "T" wehwehki me omw sosohng o positive.
  - » Komw kilang iren kaweid kan me iangodo omw mehn sosohng o pwehn kilang kilel kan me kasalehda ia mwomwen sosohng me positive (positive test).
- Dahme sansalda nan omw mehn sosohng o pahn **NEGATIVE** ma komw kilang lain ehute (e pahn mih pahnangin mesen nting "C").
- Mehn sosohng o **sohte doadoahk** ma komw kilang me pwukat:
  - » Sohte lain kan
  - » Lain ehute pahnangin mesen nting "T"
- Ma omw mehn sosohng o sohte doadoahk, komw kak pil ehu ale de komw kak eker omwi toahkte en kousapwo (Community Health Worker).



### Kahk en mwuri kan

- Wadek doaroapwe wet me nda "What to do with a positive or negative test result."
- Kesehla omwi dipwisoun de mehn sosohng o.
- Widen pehmwen.