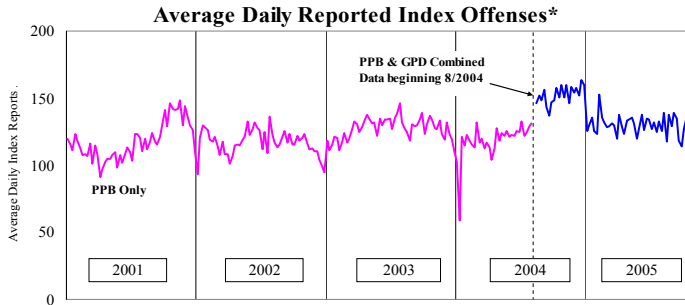


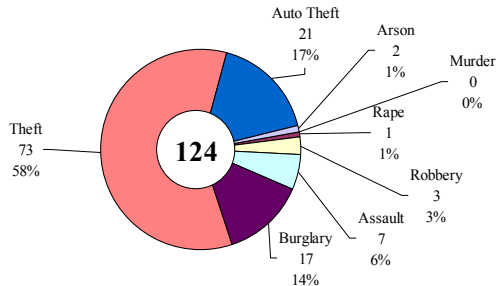
SAFETY PRIORITY BRIEF: SEPTEMBER 2005

Multnomah County: Reported Index Offenses



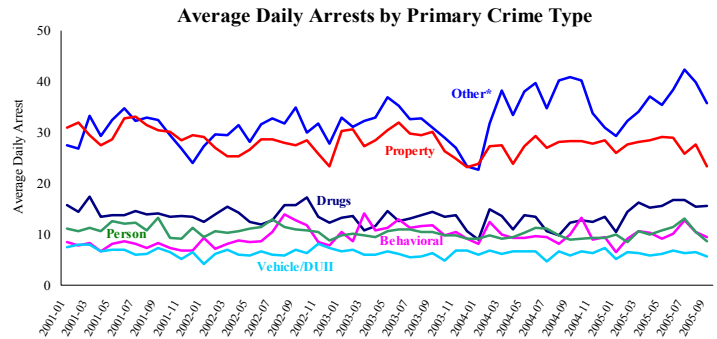
*The graph reflects the combined weekly index offenses data from Portland Police Bureau (PPB) and Gresham Police Dept (GPD), beginning 8/2004 (line in blue). According to LEDS (2005) data PPB and GPD account for 95% of all offenses county-wide. Index offenses account for about half of all reported offenses.

Average Daily Reported Index Offenses*



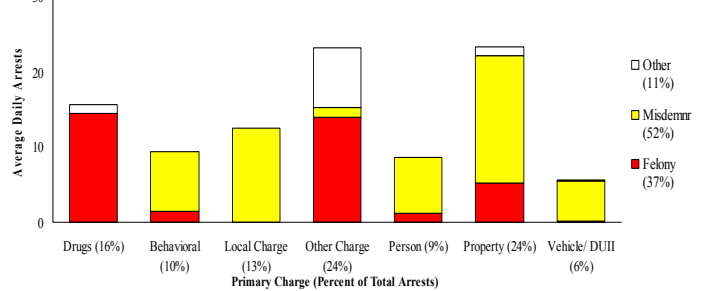
*Portland and Gresham, combined 4-week moving average for the week ending 10-1-05.

Multnomah County: Portland Arrests



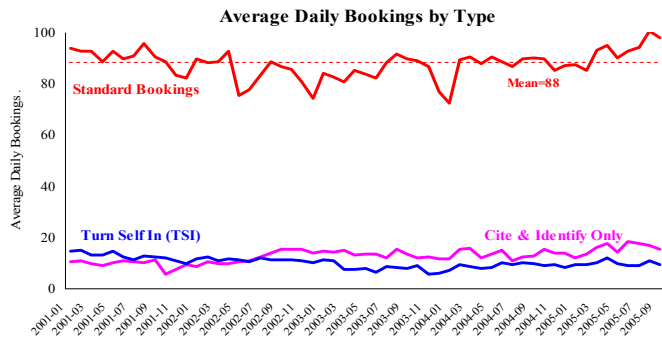
*Other largely reflects fugitive/warrant charges and local ordinances (DFZ/PEZ). PPB data only, downloaded 10-11-2005.

Average Daily Arrests*: September (n=98)



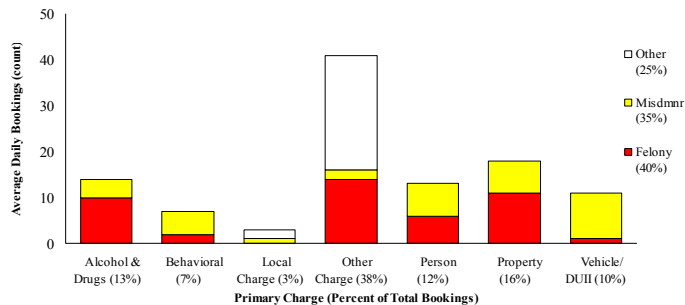
*There were 2952 arrests in September. Local Charges include drug-free and prostitution free zone violations.

Sheriff: Bookings



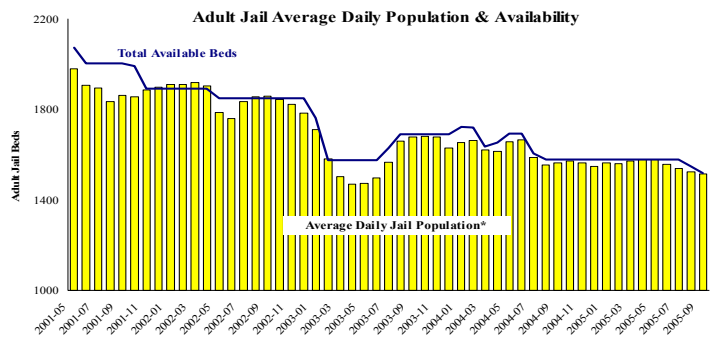
*In-transit bookings are not reported herein and account for ~4% of all bookings. September's average length of stay (ALS) per booking was 15.8 days.

Average Daily Bookings by Severity*: September (n=111)



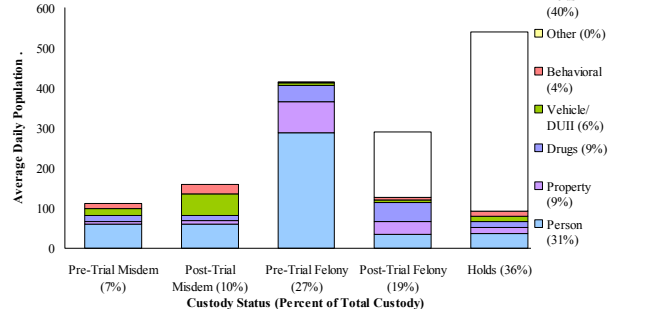
*Excludes Cite & ID. September had 3335 bookings (111/day). Corrections Health reported 578 psych-alerts (19.3/day).

Sheriff: Custody- Adult Jail Beds



*Excludes in-transit custody classifications. The MCSO reported 467 matrix releases for September 2005 (15.6/day).

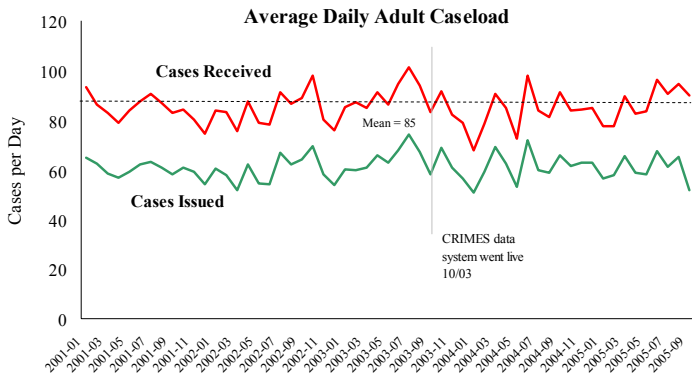
Average Daily Bed Use: September (n=1515)



Average Daily Jail System Capacity=1519. Average Daily Population (ADP)=1515; there were 4 available beds on any given day.

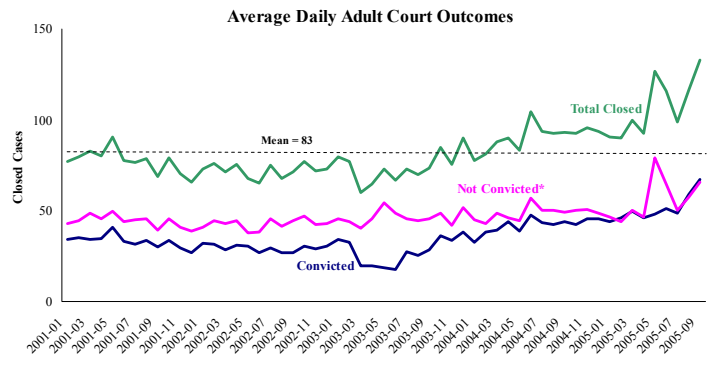
Notes: The Average Daily Reported Offenses declined, mainly due to a decrease in *Property Crimes in Portland*. Compared with last year at this time, Reported Part I Offenses have declined -5% for PPB and -7% for GPD. Average Daily Arrests dropped sharply in September, from by reductions in *Property* and *Other Charges*. Average Daily Bookings showed slight declines, but *Standard Bookings* remained higher than its multi-year average. The Average Daily Jail Capacity declined to 1519, down from August's average of 1548. The MCSO reported 467 matrix releases in September (avg. 15.6/day), slightly less than August. The Average Length of Stay (ALS) increased by one day, to 16 days per booking.

District Attorney: Adult Caseload



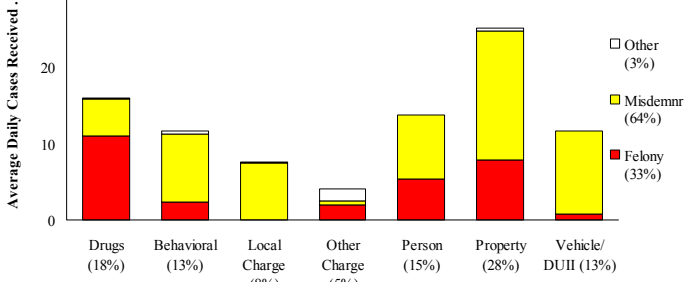
*Data retrieved 10-10-05. Note: Many recently received cases are pending review.

Court Processes: Sentencing Outcomes



*Includes dismissed cases (typically no complainant) and cases found not guilty. Adult felony and misdemeanor cases only.

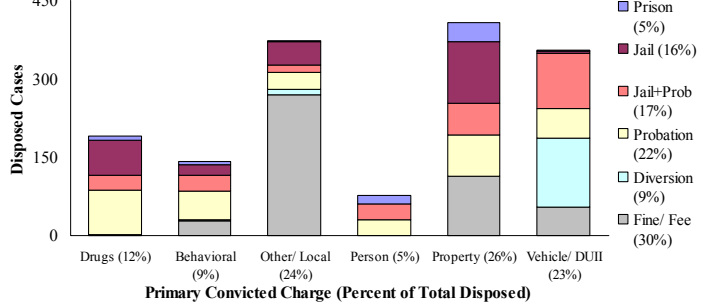
Average Daily Received Cases*: September (n=90)



Primary Charge (Percent of Total Cases Received)

*September had 2,694 received cases as of 10-11-05 (90/day). Of those, 573 cases were pending review.

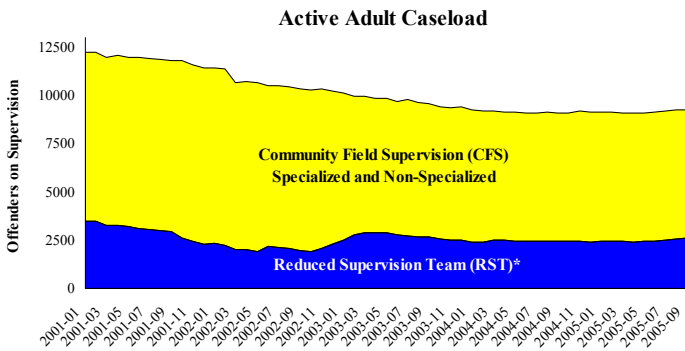
Disposition Type by Primary Conviction*: September 2005



Primary Convicted Charge (Percent of Total Disposed)

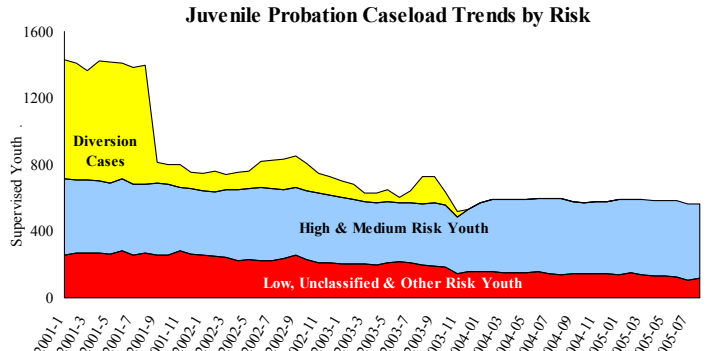
*Sentenced adult felony and misdemeanors primary convictions only. Primary conviction charge is the most serious charge with a conviction and may differ from the original primary charge. September had 2,016 convictions; 25% were felonies.

Adult Community Supervision: Caseloads

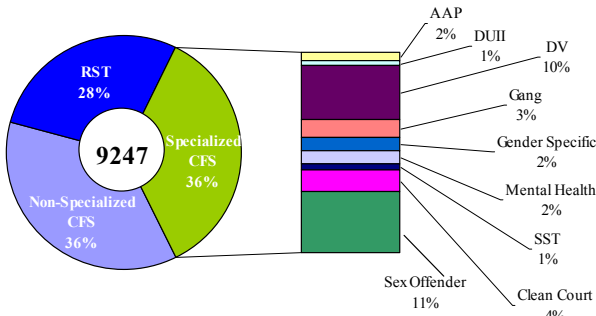


*Reduced Supervision Team (RST) formerly Casebank.

Juvenile Community Supervision: Caseloads

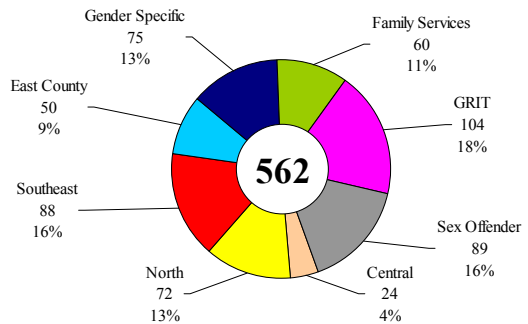


Adult Active Caseload by Type*: September 2005



*Less than 1% are "other" cases which have been included as non-specialized.

Juvenile Justice Caseload by Unit: August 2005



Average caseload per counselor was 24 cases for August.

Notes. The DA Adult Cases Received increased overall, despite decreases in *Property* and *Vehicle Offenses*. The Adult Supervision levels remained largely unchanged over August. The Juvenile Justice caseload remained largely unchanged over July. The average caseload per counselor was unchanged at 24 cases per counselor.