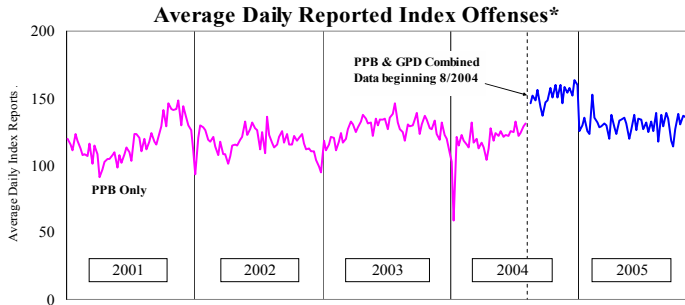


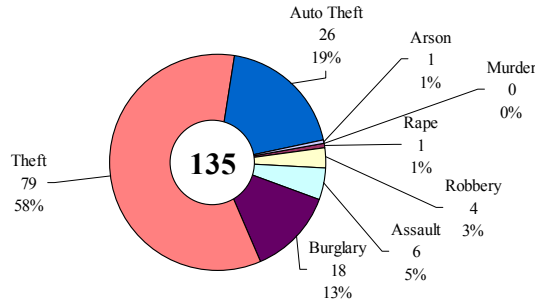
SAFETY PRIORITY BRIEF: OCTOBER 2005

Multnomah County: Reported Index Offenses



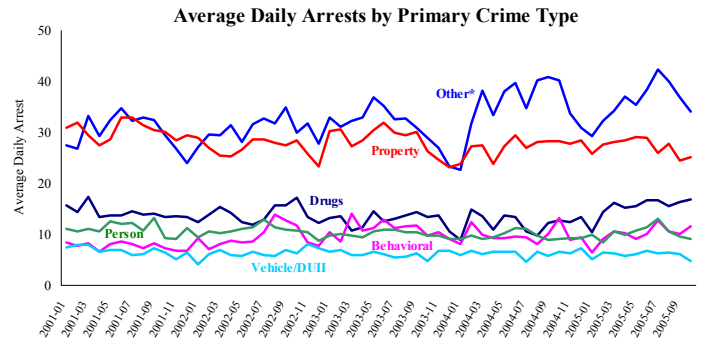
*The graph reflects the combined weekly index offenses data from Portland Police Bureau (PPB) and Gresham Police Dept (GPD), beginning 8/2004 (line in blue). According to LEDS (2005) data PPB and GPD account for 95% of all offenses county-wide. Index offenses account for about half of all reported offenses.

Average Daily Reported Index Offenses*



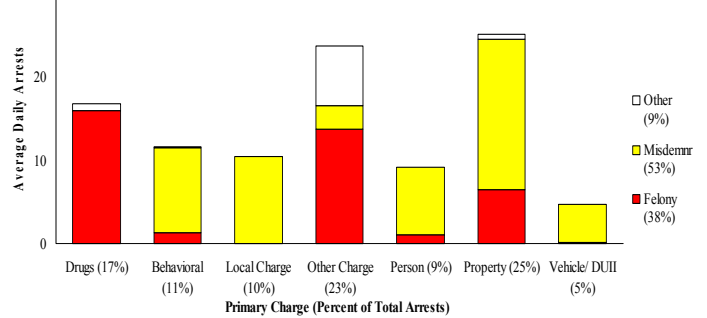
*Portland and Gresham, combined 4-week moving average for the week ending 10-29-05.

Multnomah County: Portland Arrests



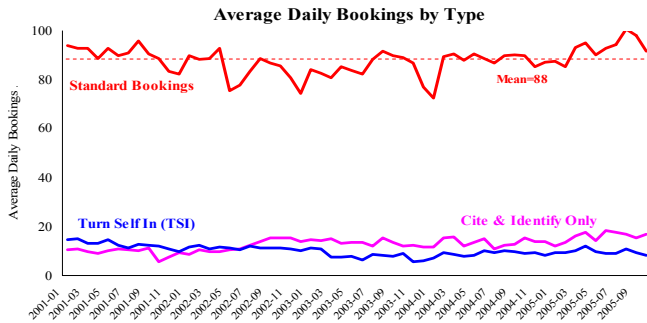
*Other largely reflects fugitive/warrant charges and local ordinances (DFZ/PFZ). PPB data only, downloaded 11-18-2005.

Average Daily Arrests*: October (n=102)



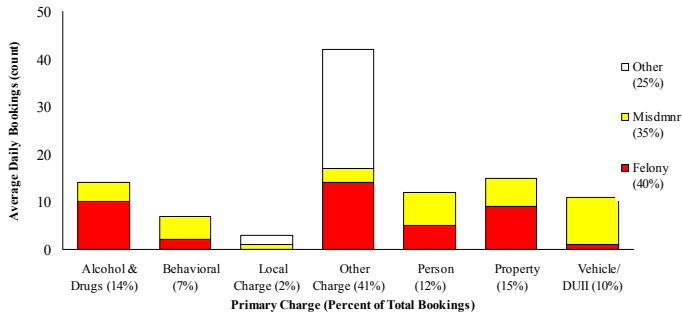
*There were 3,154 arrests in October. Local Charges include drug-free and prostitution free zone violations.

Sheriff: Bookings



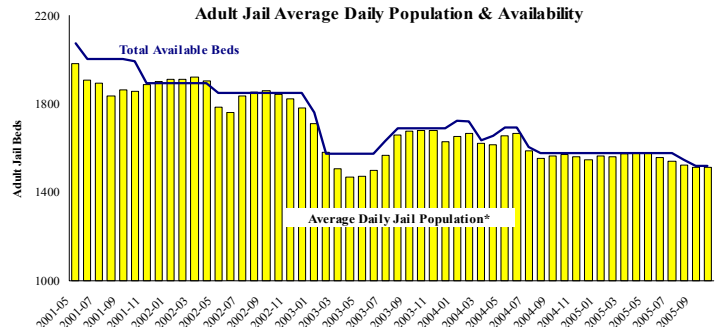
*In-transit bookings are not reported herein and account for ~4% of all bookings. October's average length of stay (ALS) per booking was 13.1 days.

Average Daily Bookings by Severity*: October (n=104)



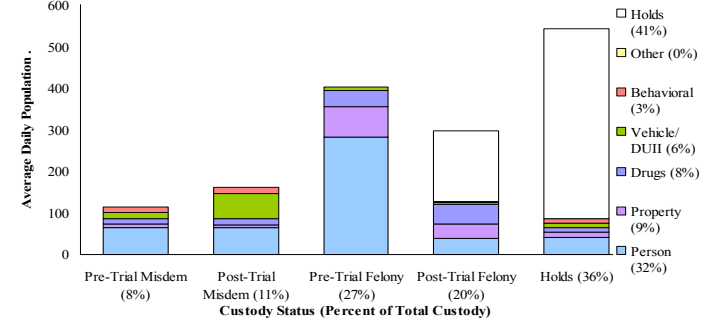
*Excludes Cite & ID. August had 3217 bookings (104/day). Corrections Health reported 560 psych-alerts (18.1/day).

Sheriff: Custody- Adult Jail Beds



*Excludes in-transit custody classifications. The MCSO reported 447 matrix releases for October 2005 (14.4/day).

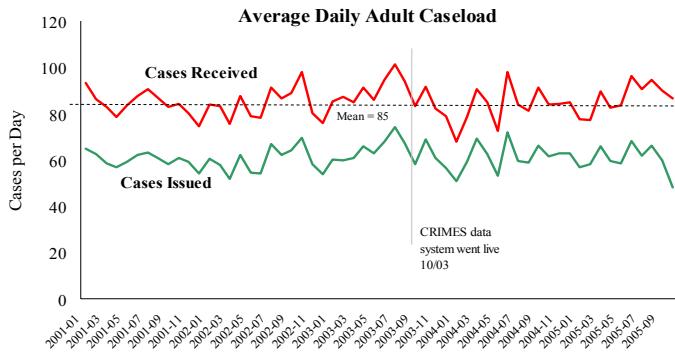
Average Daily Bed Use: October (n=1515)



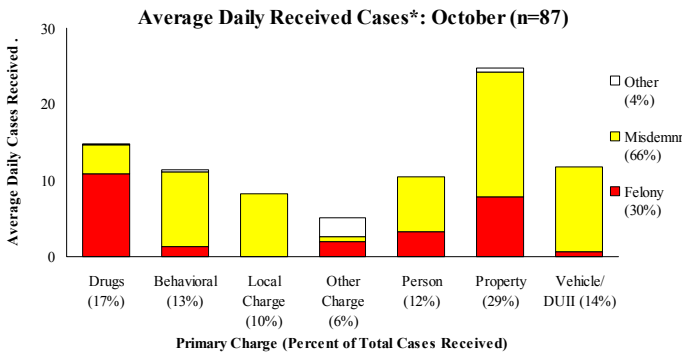
Average Daily Jail System Capacity=1519. Average Daily Population (ADP)=1515; there were 4 available beds on any given day.

Notes: The Average Daily Reported Part I Offenses increased, due to increases in *Property Crimes* for both PPB and GPD. Year-to-date reported Part I Offenses are more than -6% lower than last year. Average Daily *Standard Bookings* declined, remaining above the multi-year average. The MCSO reported 447 matrix releases in October (avg. 14.4/day), comparable to September. The Average Length of Stay (ALS) decreased substantially to 13 days, a decline of 3 days from September.

District Attorney: Adult Caseload

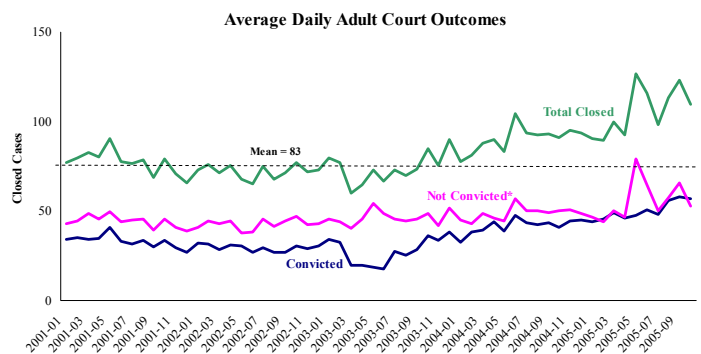


*Data retrieved 11-18-05. Note: Many recently received cases are pending review.



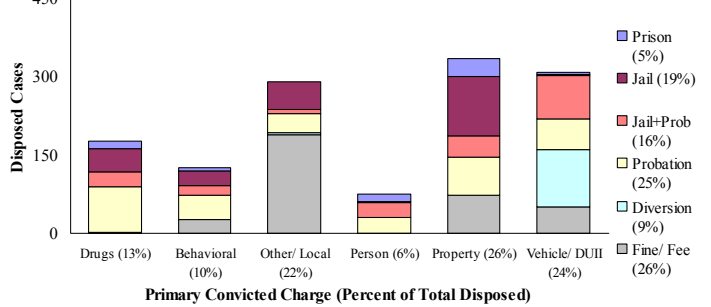
*October had 2,685 received cases as of 11-18-05 (87/day). Of those, 643 cases were pending review.

Court Processes: Sentencing Outcomes



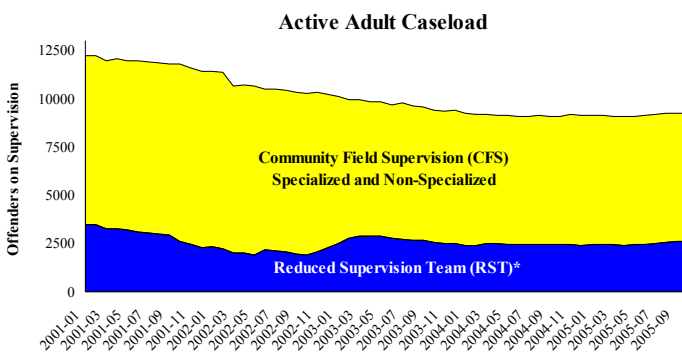
*Includes dismissed cases (typically no complainant) and cases found not guilty. Adult felony and misdemeanor cases only.

Disposition Type by Primary Conviction*: October 2005



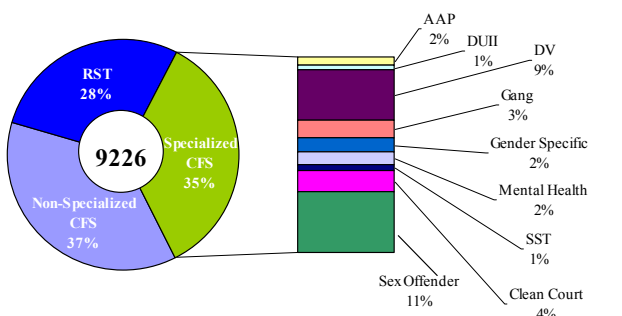
*Sentenced adult felony and misdemeanors primary convictions only. Primary conviction charge is the most serious charge with a conviction and may differ from the original primary charge. October had 1,770 convictions; 26% were felonies.

Adult Community Supervision: Caseloads



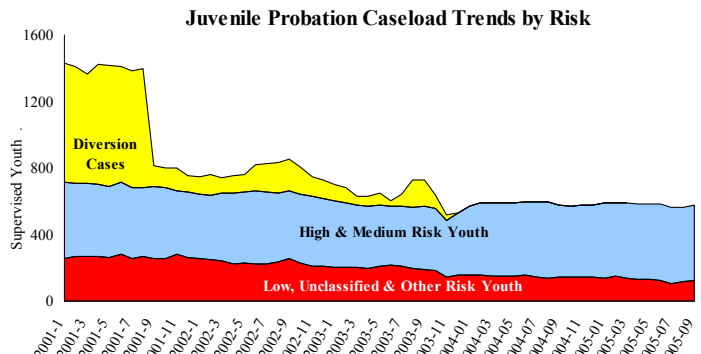
*Reduced Supervision Team (RST) formerly Casebank.

Adult Active Caseload by Type*: October 2005

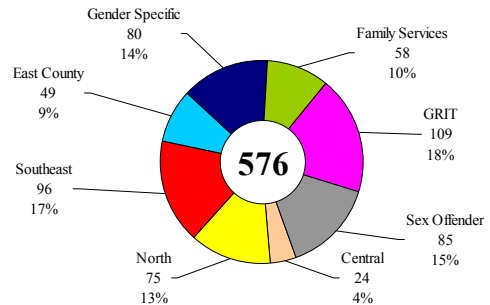


*Less than 1% are "other" cases which have been included as non-specialized.

Juvenile Community Supervision: Caseloads



Juvenile Justice Caseload by Unit: September 2005



Average caseload per counselor was 25.5 cases for September.

Notes: The DA Adult Cases Received remained largely the same as September. The Adult Supervision declined overall: increases in the Reduced Supervision Team and Non-Specialized but a large decrease in Specialized (i.e., Domestic Violence, Clean Court, and Gangs). Juvenile Justice Caseload increased due to increases in all three risk-level cases. The average per counselor caseload was 3 cases more than 1 year ago at this time.