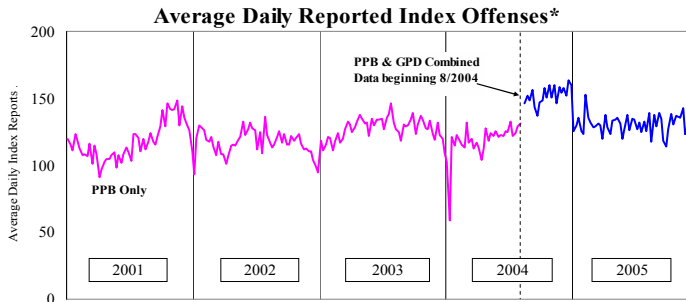


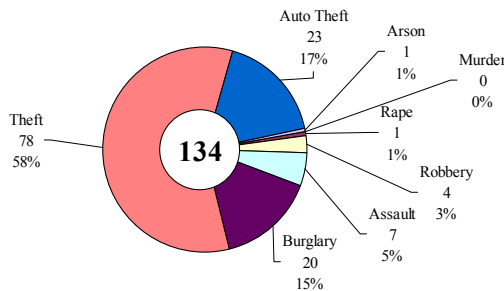
# SAFETY PRIORITY BRIEF: NOVEMBER 2005

## Multnomah County: Reported Index Offenses



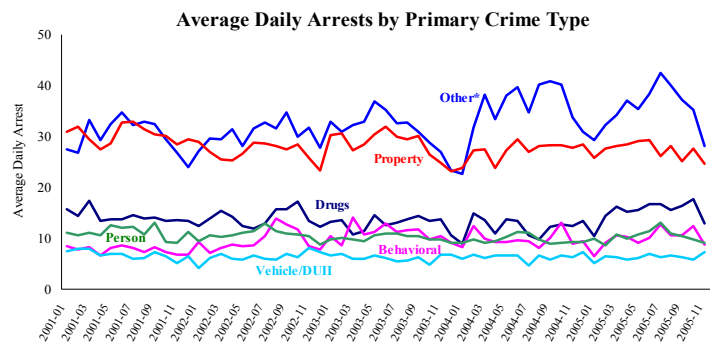
\*The graph reflects the combined weekly index offenses data from Portland Police Bureau (PPB) and Gresham Police Dept (GPD), beginning 8/2004 (line in blue). According to LEDS (2005) data PPB and GPD account for 95% of all offenses county-wide. Index offenses account for about half of all reported offenses.

### Average Daily Reported Index Offenses\*



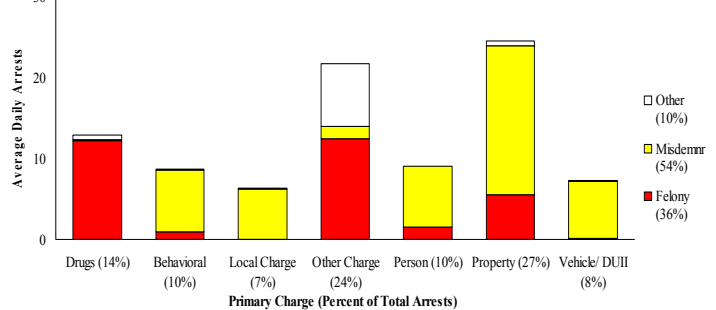
\*Portland and Gresham, combined 4-week moving average for the week ending 11-18-05.

## Multnomah County: Portland Arrests



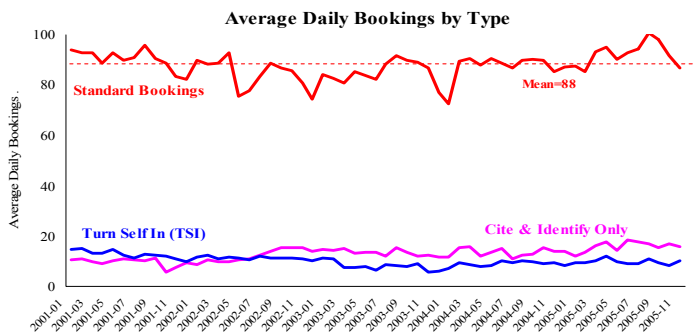
\*Other largely reflects fugitive/warrant charges and local ordinances (DFZ/PFZ). PPB data only, downloaded 12-6-2005.

### Average Daily Arrests\*: November (n=91)



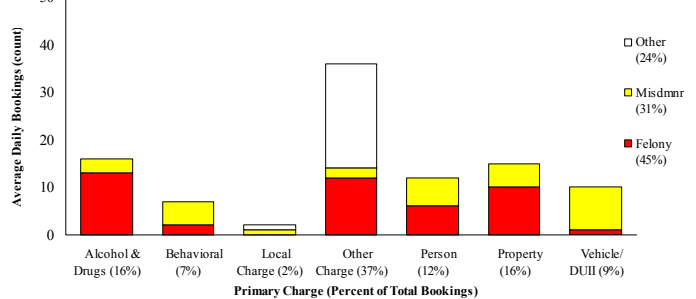
\*There were 2,721 arrests in November. Local Charges include drug-free and prostitution free zone violations.

## Sheriff: Bookings



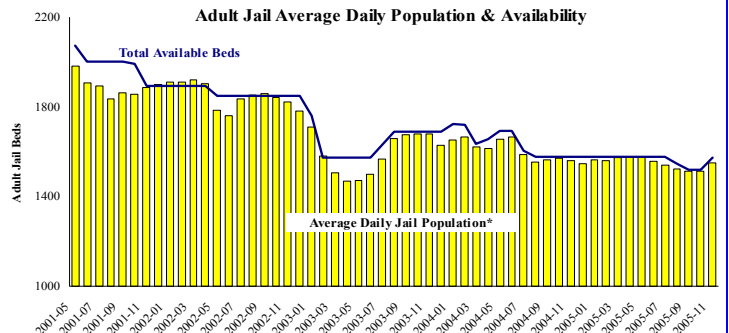
\*In-transit bookings are not reported herein and account for ~4% of all bookings. November's average length of stay (ALS) per booking was 17.6 days. DSSJ offline; source MCSO report November report.

### Average Daily Bookings by Severity\*: November (n=96\*\*)



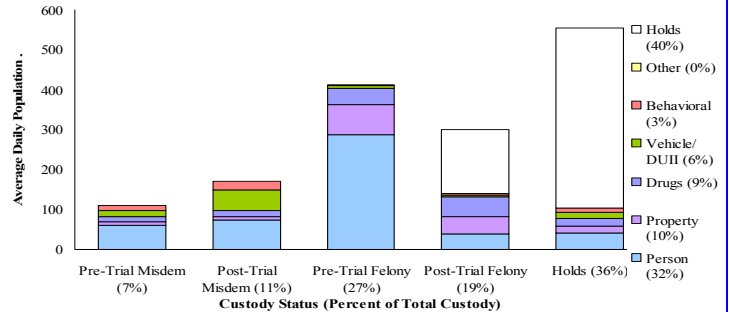
\*Excludes Cite & ID. \*\*Partial data due to software conversion: Total of 1350 bookings (96/day) through 11/14/05. Corrections Health reported 489 psych-alerts (16.3/day) for the entire month of November.

## Sheriff: Custody- Adult Jail Beds



\*Excludes in-transit custody classifications. The MCSO reported 227 matrix releases for November 2005 (7.6/day).

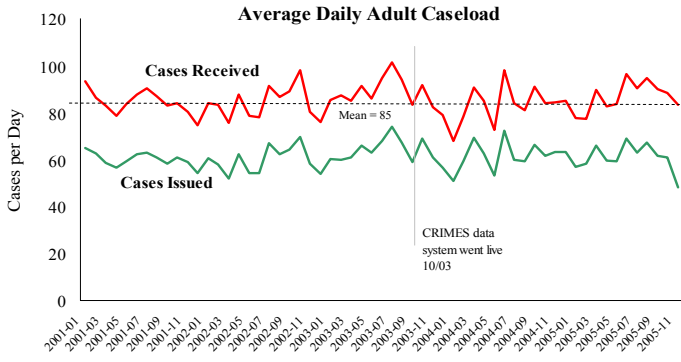
### Average Daily Bed Use: November (n=1549)



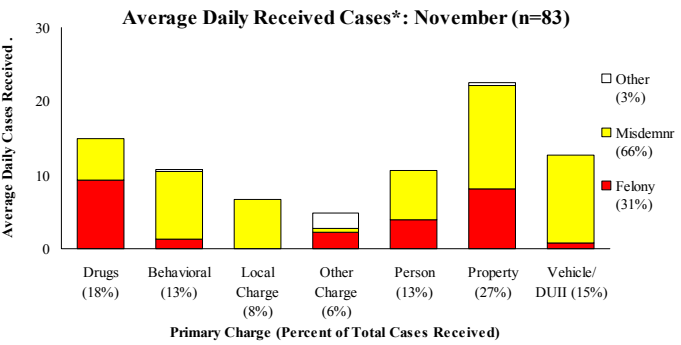
Average Daily Jail System Capacity=1576. Average Daily Population (ADP)=1549; there were 27 available beds on any given day.

**Notes:** Year-to-date reported Part I Offenses are -7% (PPB) and -5% (GPD) lower than last year at this time. Average Daily Arrests declined sharply in all types except *Vehicle/DUI*. Average Daily *Standard Bookings* continued their three month decline. The average daily capacity increased to 1576, due to the addition of 57 Portland beds at MCIJ (P57). The decline in arrests and subsequent bookings combined with the additional 57 beds reduced the number of matrix releases to 227 (avg. 7.6/day), the lowest since 11/04. The Average Length of Stay (ALS) increased 4.6 days to 17.6 days

### District Attorney: Adult Caseload

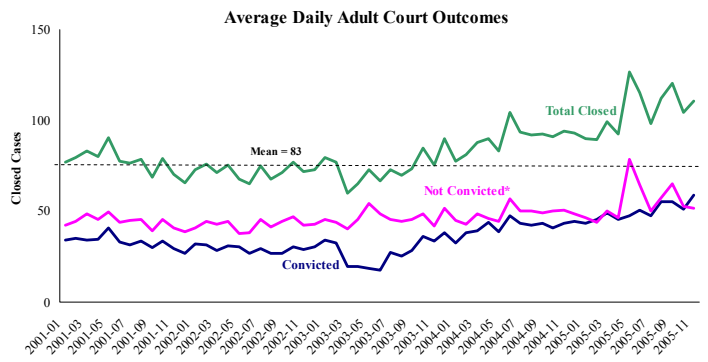


\*Data retrieved 12-6-05. Note: Many recently received cases are pending review.

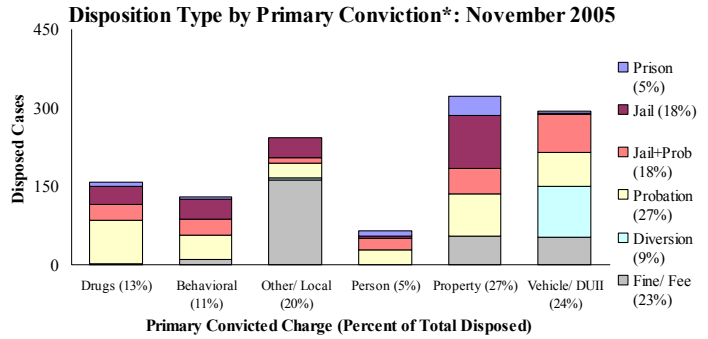


\*October had 2,494 received cases as of 12-6-05 (83/day). Of those, 544 cases were pending review.

### Court Processes: Sentencing Outcomes

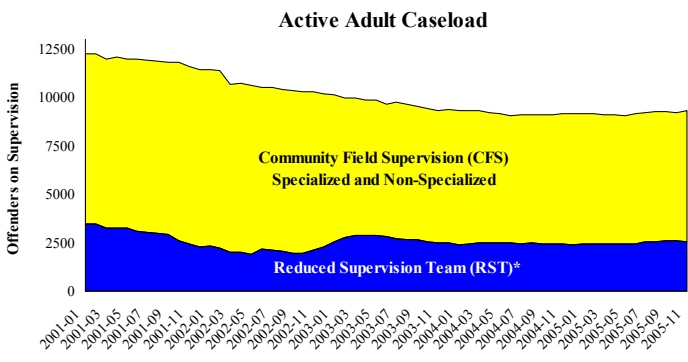


\*Includes dismissed cases (typically no complainant) and cases found not guilty. Adult felony and misdemeanor cases only.



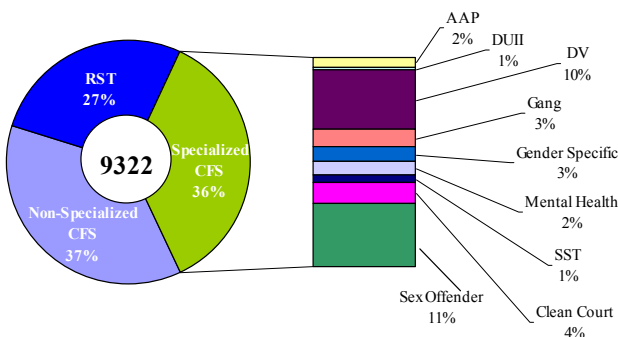
\*Sentenced adult felony and misdemeanors primary convictions only. Primary conviction charge is the most serious charge with a conviction and may differ from the original primary charge. November had 1,776 convictions; 26% were felonies.

### Adult Community Supervision: Caseloads



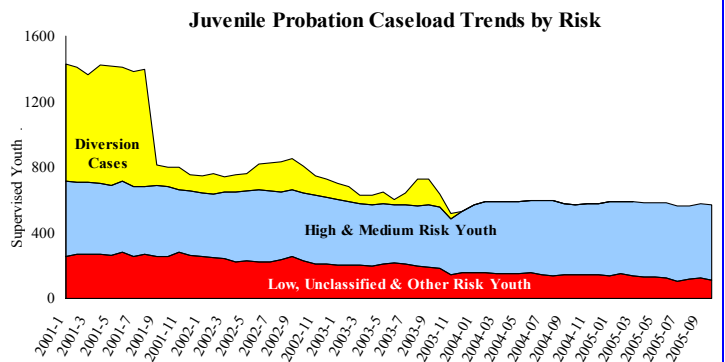
\*Reduced Supervision Team (RST) formerly Casebank.

### Adult Active Caseload by Type\*: November 2005

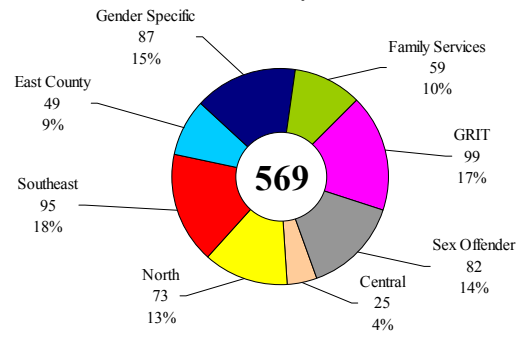


\*Less than 1% are "other" cases which have been included as non-specialized.

### Juvenile Community Supervision: Caseloads



### Juvenile Justice Caseload by Unit: October 2005



Average caseload per counselor was 24.5 cases for October.

**Notes:** The DA Adult Cases Received remained largely the same as October. The Adult Supervision increased slightly due to increases in the Non-Specialized and Specialized caseloads. Early 2004 adult Specialized and Non-Specialized trend values were revised upward slightly due to an immaterial miscalculation. Juvenile Justice Caseload declined slightly due to a decline in the low-risk caseload.