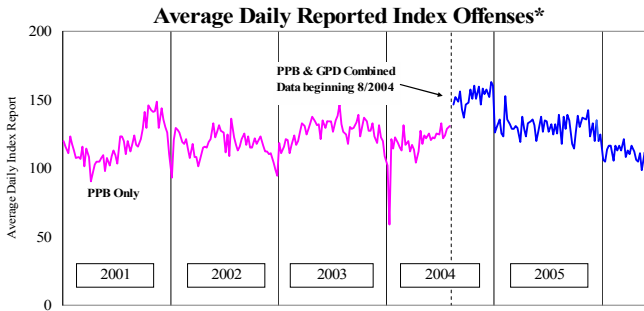


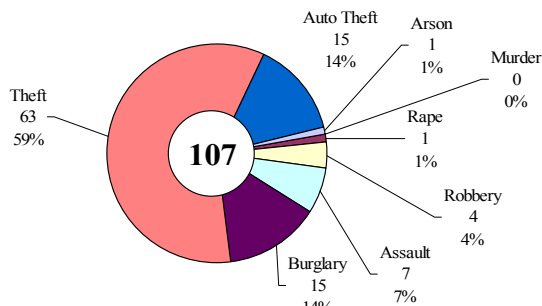
SAFETY PRIORITY BRIEF: MAY 2006

Multnomah County: Reported Index Offenses



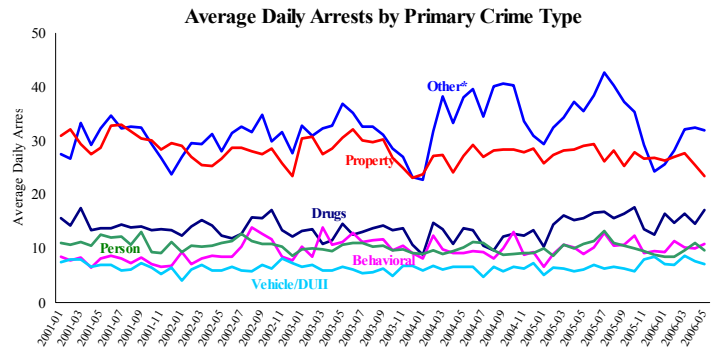
*The graph reflects the combined weekly index offenses data from Portland Police Bureau (PPB) and Gresham Police Dept (GPD), beginning 8/2004 (line in blue). According to LEADS (2005) data PPB and GPD account for 95% of all offenses county-wide. Index offenses account for about half of all reported offenses.

Average Daily Reported Index Offenses*



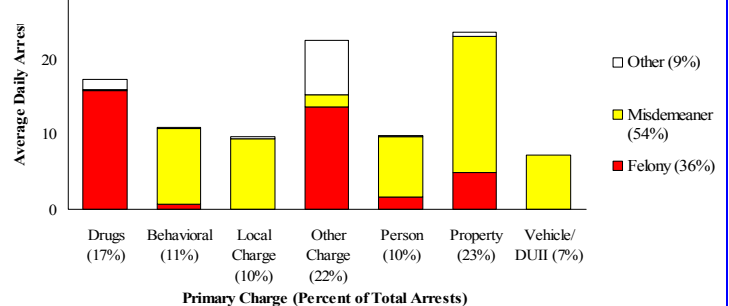
*Portland and Gresham, combined 4-week moving average for the week ending 5-20-06.

Multnomah County: Portland Arrests



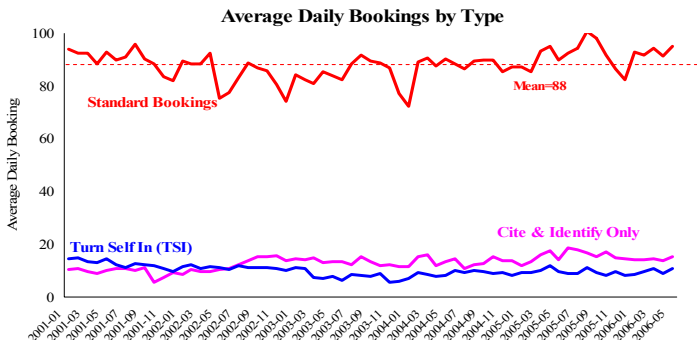
*Other largely reflects fugitive/warrant charges and local ordinances (DFZ/PFZ). PPB data only, downloaded 6-23-2006.

Average Daily Arrests*: May (n=101)



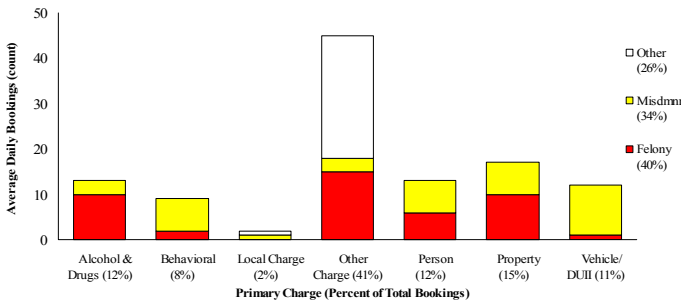
*There were 3,116 arrests in May. Local Charges include drug-free and prostitution free zone violations.

Sheriff: Bookings



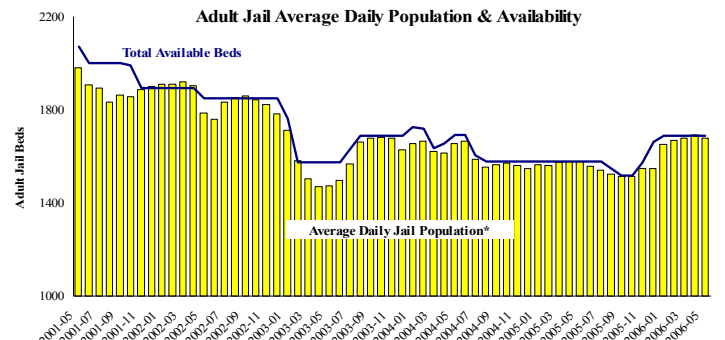
*In-transit bookings are not reported herein and account for ~4% of all bookings. May's average length of stay (ALS) per booking was 17.0 days.

Average Daily Bookings by Severity*: May (n=110)



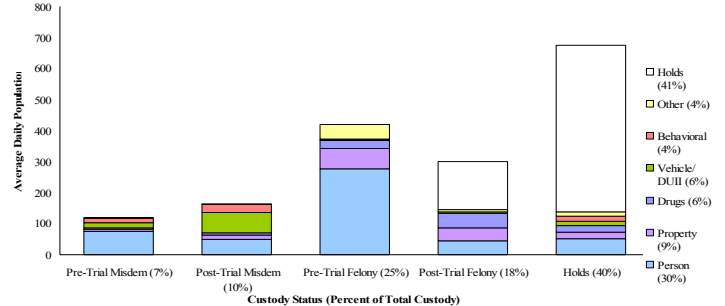
*All booking types except Cite & ID. May had 3,397 bookings (103/day).

Sheriff: Custody- Adult Jail Beds



*Excludes in-transit custody classifications. The MCSO reported 247 matrix releases for May 2006 (8.0/day).

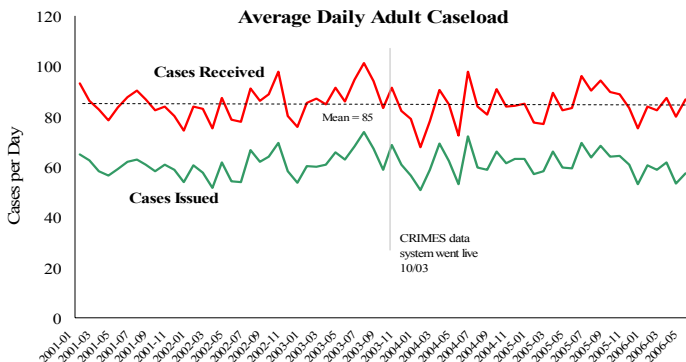
Average Daily Bed Use: May (n=1678)



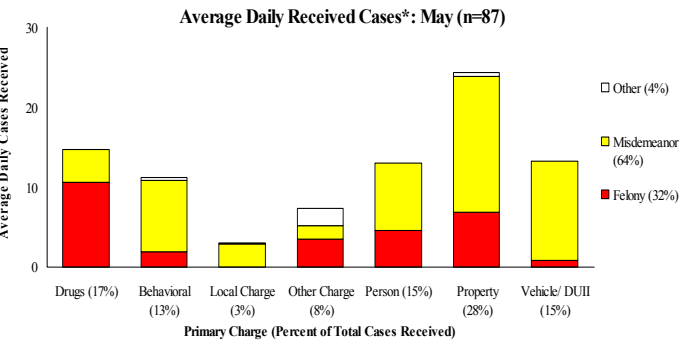
Average Daily Jail System Capacity=1690. Average Daily Population (ADP)=1678; there were 12 available beds on any given day.

Notes: Reported index offenses continued their decline; Portland reported a 16% decrease and Gresham reported an 18% decrease compared to this time last year (PPB) due to decreases in most *Property* crimes—large drops in auto-related thefts and home and commercial burglaries. Standard bookings increased inline with increased arrests over April. The MCSO reported 247 matrix releases in May (avg. 8.0/day) and the average length of stay (ALS) was 17 days per bookings slightly lower than April. May's overall jail utilization was 99.3%, leaving only 12 beds available on any given day.

District Attorney: Adult Caseload

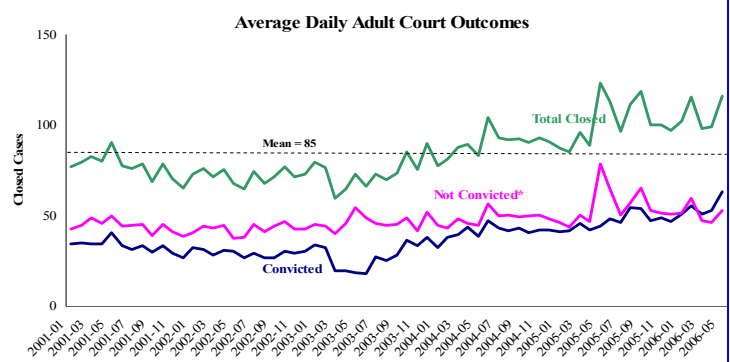


*Data retrieved 6-23-06. Note: Many recently received cases are pending review.



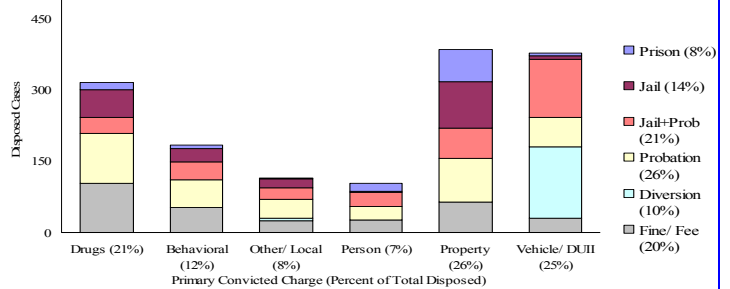
*May had 2,696 received cases as of 6-23-06 (87/day). Of those, 381 cases were pending review.

Court Processes: Sentencing Outcomes



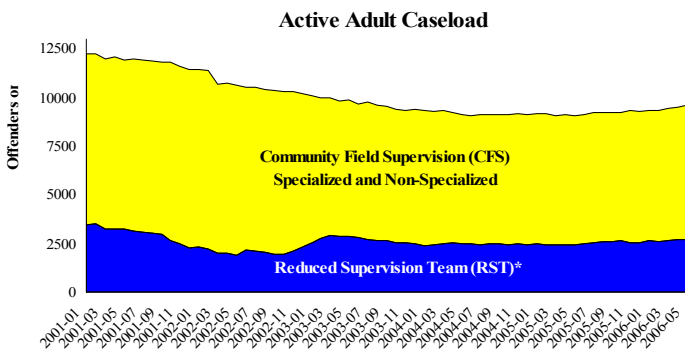
*Includes dismissed cases (typically no complainant) and cases found not guilty. Adult felony and misdemeanor cases only.

Disposition Type by Primary Conviction*: May 2006



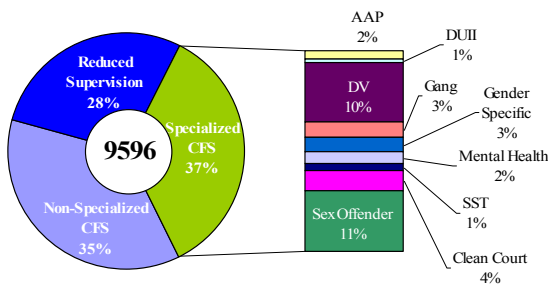
*Sentenced adult felony and misdemeanors primary convictions only. Primary conviction charge is the most serious charge with a conviction and may differ from the original primary charge. May had 1,966 convictions; 32% were felonies.

Adult Community Supervision: Caseloads



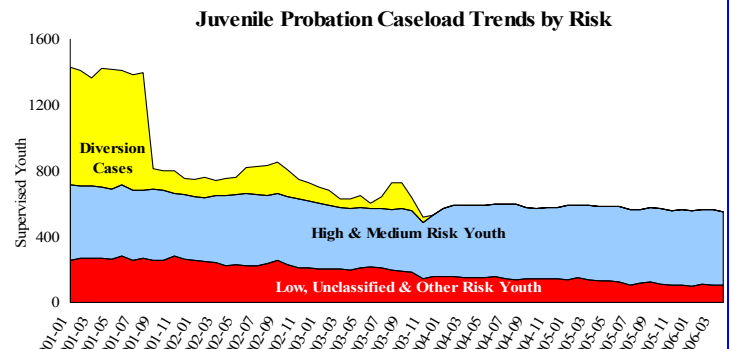
*Reduced Supervision Team (RST) formerly Casebank.

Adult Active Caseload by Type*: May 2006

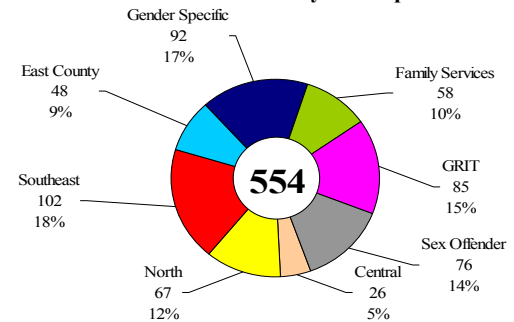


*Less than 1% are "other" cases which have been included as non-specialized.

Juvenile Community Supervision: Caseloads



Juvenile Justice Caseload by Unit: April 2006



Average caseload per counselor was 23.1 cases for April.

Notes: The DA adult case data reflects changes in the coding of *Drug* charges. Average daily sentencing outcomes increased overall 21% from April; *Drug*, *Behavioral*, *Local Charges*, and *Vehicle* convictions increased while all other conviction types remained at levels similar to April's. The Adult community supervision total caseload continued their rising trend since April 2005 with a May 2006 showing 1.3% increase over the previous month, while the juvenile caseload remained largely unchanged.