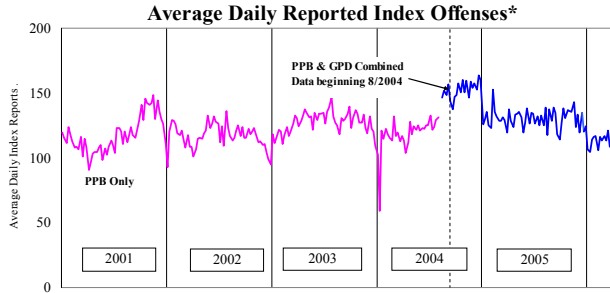


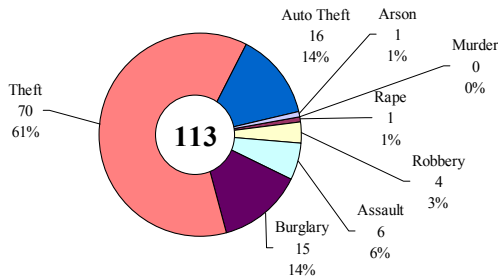
SAFETY PRIORITY BRIEF: MARCH 2006

Multnomah County: Reported Index Offenses



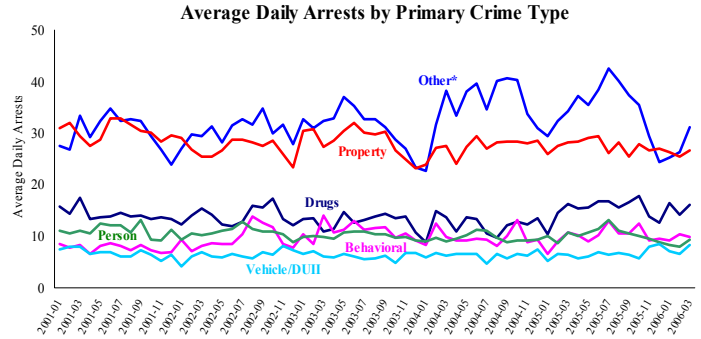
*The graph reflects the combined weekly index offenses data from Portland Police Bureau (PPB) and Gresham Police Dept (GPD), beginning 8/2004 (line in blue). According to LEDS (2005) data PPB and GPD account for 95% of all offenses county-wide. Index offenses account for about half of all reported offenses.

Average Daily Reported Index Offenses*



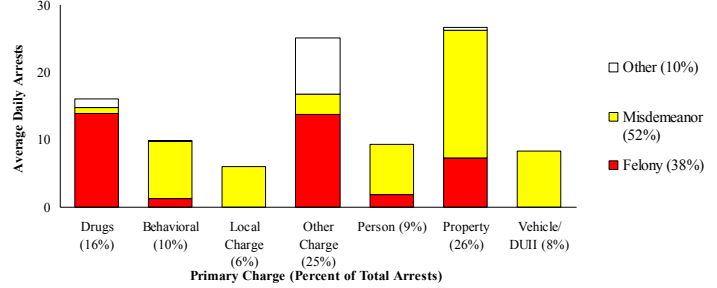
*Portland and Gresham, combined 4-week moving average for the week ending 3-25-06.

Multnomah County: Portland Arrests



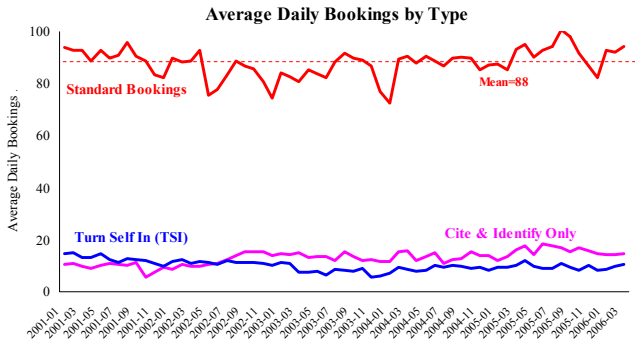
*Other largely reflects fugitive/warrant charges and local ordinances (DFZ/PFZ). PPB data only, downloaded 4-17-2006.

Average Daily Arrests*: March (n=102)



*There were 3,151 arrests in March. Local Charges include drug-free and prostitution free zone violations.

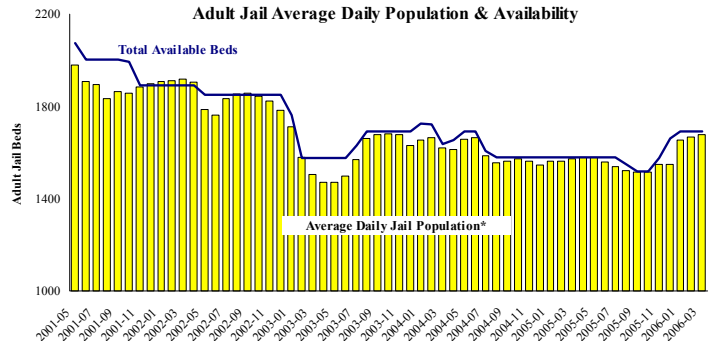
Sheriff: Bookings



*In-transit bookings are not reported herein and account for ~4% of all bookings. March's average length of stay (ALS) per booking was 17.8 days. DSSJ offline; source MCSO March report (Mobius).

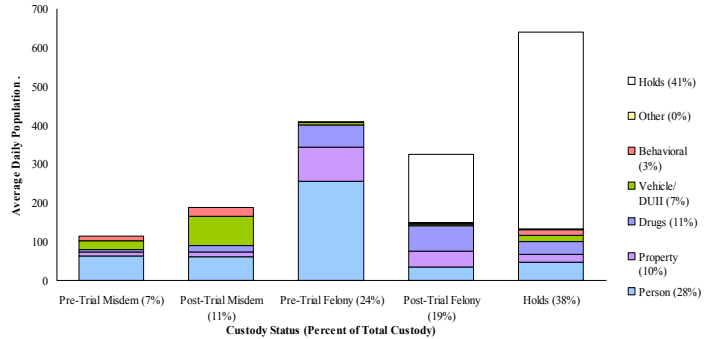
DSS-Justice eSWIS Conversation Not Complete
Data Unavailable for March 2006
(accessed 4/17/06)

Sheriff: Custody- Adult Jail Beds



*Excludes in-transit custody classifications. The MCSO reported 167 matrix releases for March 2006 (5.4/day).

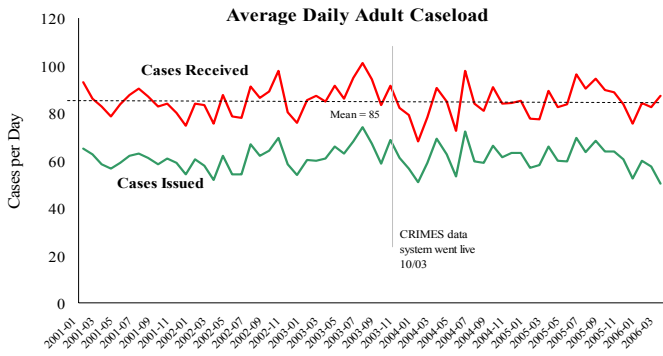
Average Daily Bed Use: March (n=1679)



Average Daily Jail System Capacity=1690. Average Daily Population (ADP)=1679; there were 11 available beds on any given day.

Notes: Reported index offenses continued their decline and are 15% lower compared to this time last year (PPB). Average daily arrests increased due to *Drug* arrests (Liquor and Alcohol), as well as *Other Charges* (Fugitive). Standard bookings increased due to the marked increase in arrests. The MCSO reported 167 matrix releases in March (avg. 5.4/day) and the average length of stay (ALS) remained the same as February (18 days per booking). March's overall jail utilization was 99.4%, leaving only 11 beds available on any given day.

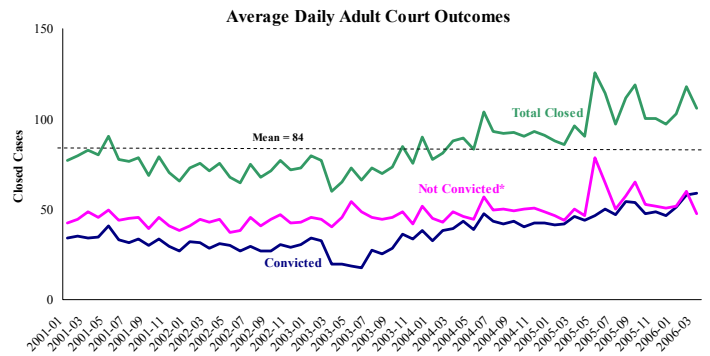
District Attorney: Adult Caseload



*Data retrieved 4-17-06. Note: Many recently received cases are pending review.

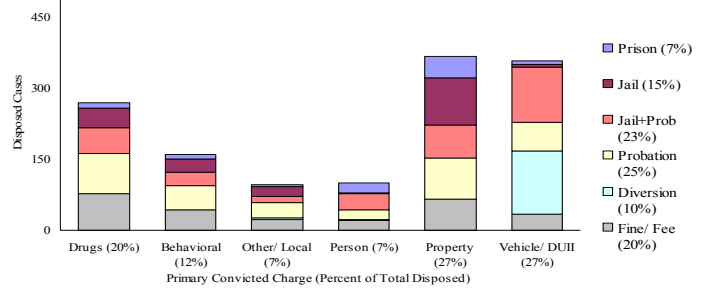
DSS-Justice Average Daily Received Cases Data
Unavailable for March 2006
(Accessed 4/26/06)

Court Processes: Sentencing Outcomes



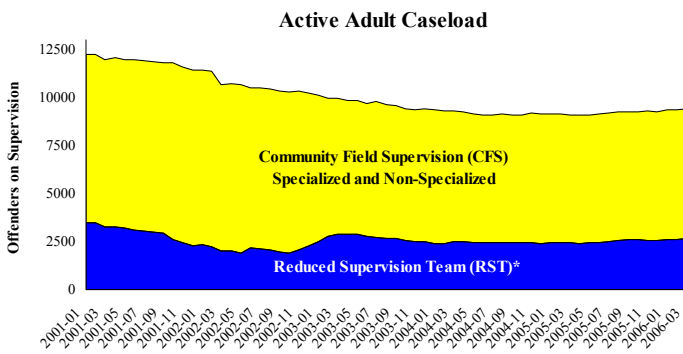
*Includes dismissed cases (typically no complainant) and cases found not guilty. Adult felony and misdemeanor cases only.

Disposition Type by Primary Conviction*: March 2006



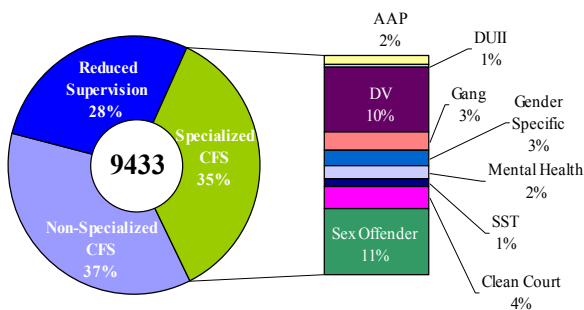
*Sentenced adult felony and misdemeanors primary convictions only. Primary conviction charge is the most serious charge with a conviction and may differ from the original primary charge. March had 1,690 convictions; 30% were felonies.

Adult Community Supervision: Caseloads



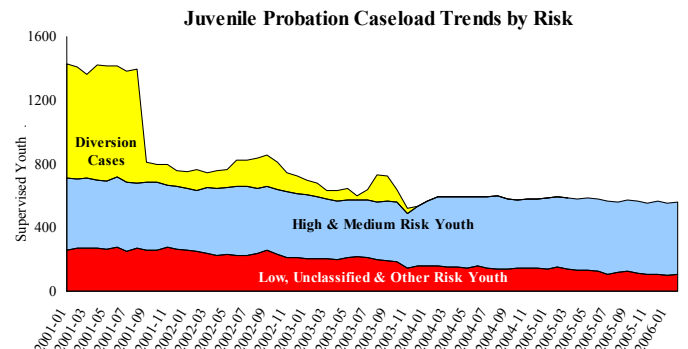
*Reduced Supervision Team (RST) formerly Casebank.

Adult Active Caseload by Type*: March 2006

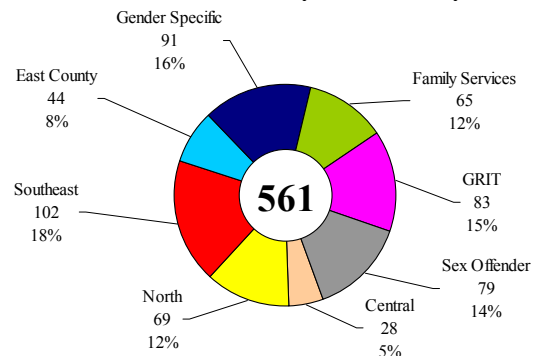


*Less than 1% are "other" cases which have been included as non-specialized.

Juvenile Community Supervision: Caseloads



Juvenile Justice Caseload by Unit: February 2006



Average caseload per counselor was 22.7 cases for February.

Notes: The DA adult cases increased 17% returning to the multi-year average; however, data for specific charges was unavailable at the time of printing. Average daily sentencing outcomes decreased overall 10% from February; *Drug* convictions decreased while *Property* convictions increased. The Adult community supervision total caseload showed a slight increase over February, while juvenile caseload remained largely unchanged.