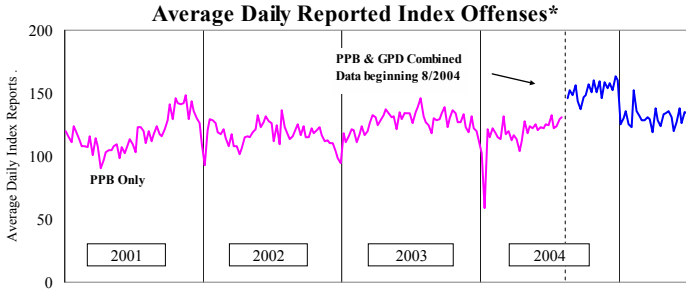


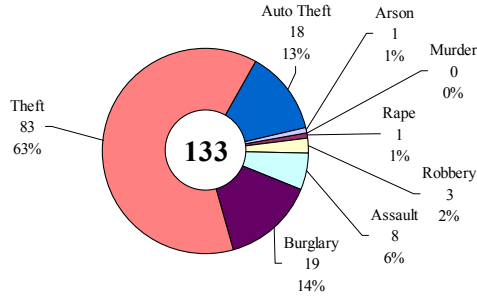
# SAFETY PRIORITY BRIEF: JUNE 2005

## Multnomah County: Reported Index Offenses



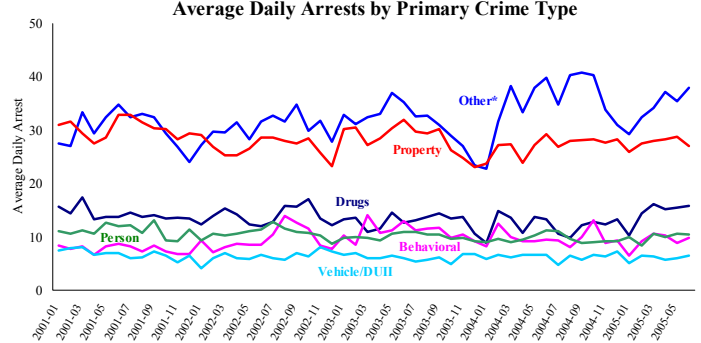
\*The graph reflects the combined weekly index offenses data from Portland Police Bureau (PPB) and Gresham Police Dept (GPD), beginning 8/2004 (line in blue). According to LEADS (2005) data PPB and GPD account for 95% of all offenses county-wide. Index offenses account for about half of all reported offenses.

### Average Daily Reported Index Offenses\*



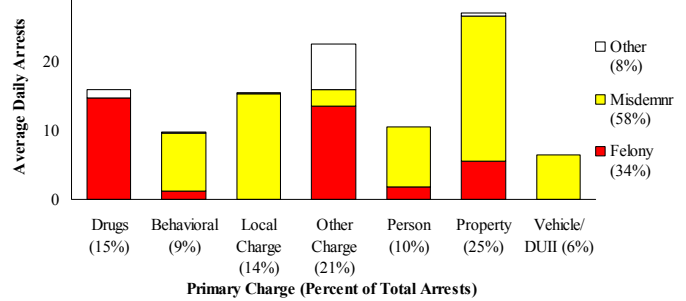
\*Portland and Gresham, combined 4-week moving average for the week ending 6-18-2005.

## Multnomah County: Portland Arrests



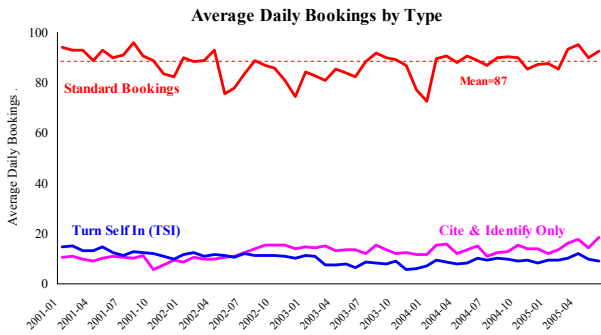
\*Other largely reflects fugitive/warrant charges and local ordinances (DFZ/PFZ). PPB data only, downloaded 7-13-2005.

### Average Daily Arrests\*: June (n=108)



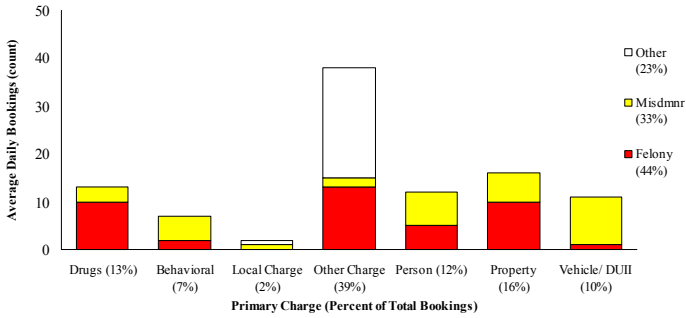
\*There were 3,266 arrests in June. Local Charges include drug-free and prostitution free zone violations.

## Sheriff: Bookings



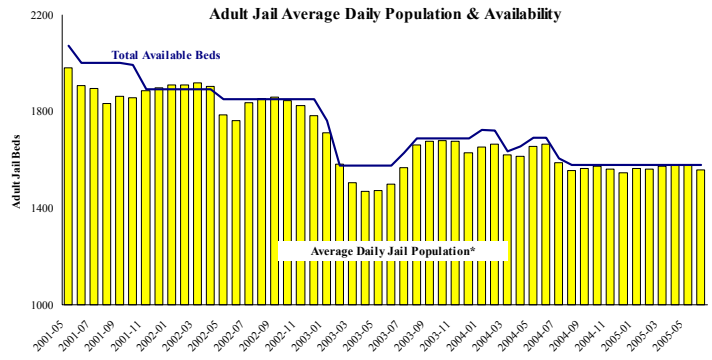
\*In-transit bookings are not reported herein and account for ~4% of all bookings. June's average length of stay (ALS) per booking was 17.8 days.

### Average Daily Bookings by Severity\*: June (n=105)



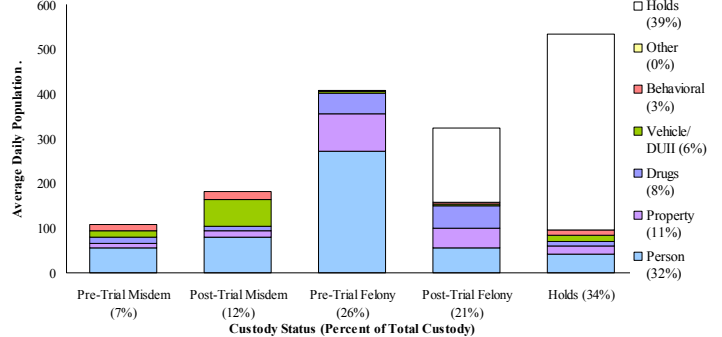
\*Excludes Cite & ID. June had 3159 bookings (105/day). Corrections Health reported 510 psych-alerts (17.0/day).

## Sheriff: Custody- Adult Jail Beds



\*Excludes in-transit custody classifications. The MCSO reported 285 matrix releases for June 2005 (9.5/day).

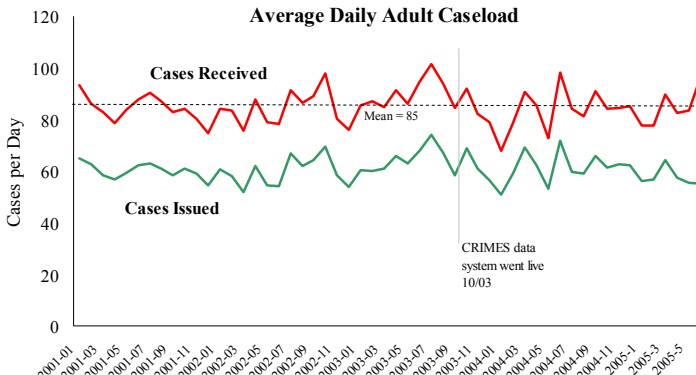
### Average Daily Bed Use: June (n=1558)



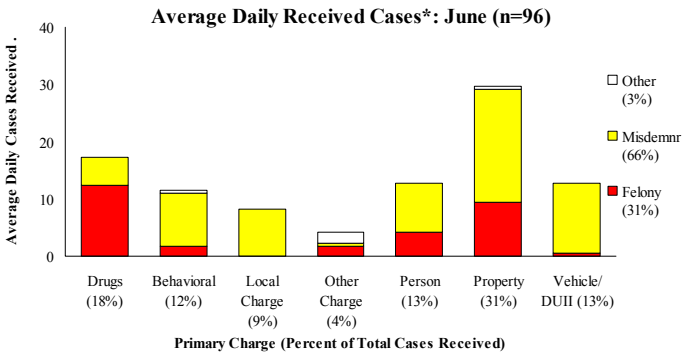
Average daily jail system capacity=1579. Average Daily Population (ADP)=1558; there were 21 available beds on any given day.

**Notes:** Average Daily Reported Offenses increased due to increases in *Assault, Theft and Property Crimes* in Portland. Average Daily Arrests increased slightly due to more *Other* category arrests. Average Daily Bookings increased slightly, mainly due to increases in bookings for *Misdemeanor-level Person and Property charges*. The MCSO reported 285 matrix releases (average 9.5 per day), the lowest since December 2004. Average length of stay (ALS) was 17.75, almost a day longer than May's ALS.

## District Attorney: Adult Caseload

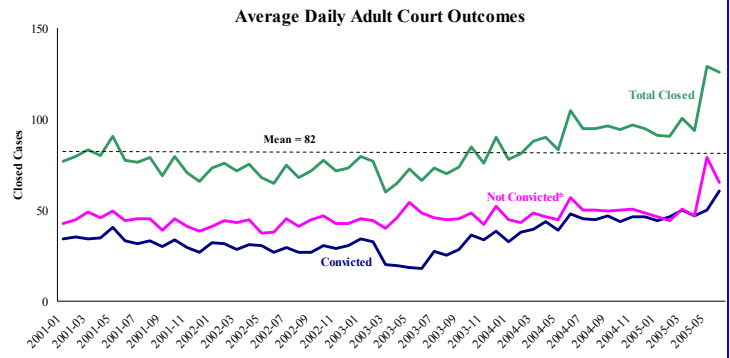


\*Data retrieved 7-13-05. Note: Many recently received cases are pending review.



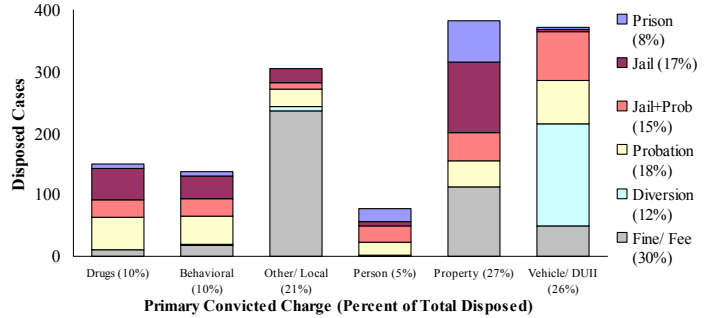
\*May had 2,894 received cases as of 7-13-05 (96/day). Of those, 641 cases were pending review.

## Court Processes: Sentencing Outcomes



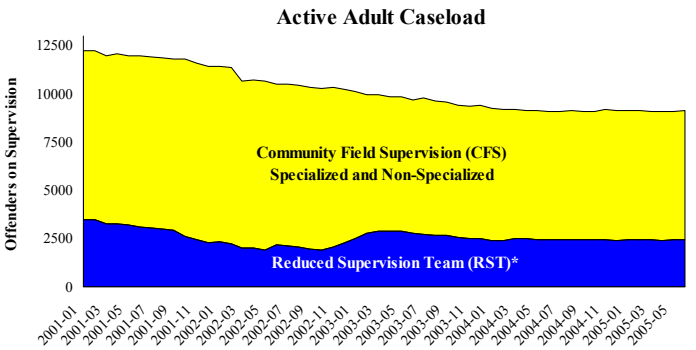
\*Includes dismissed cases (typically no complainant) and cases found not guilty. Adult felony and misdemeanor cases only.

### Disposition Type by Primary Conviction\*: June 2005



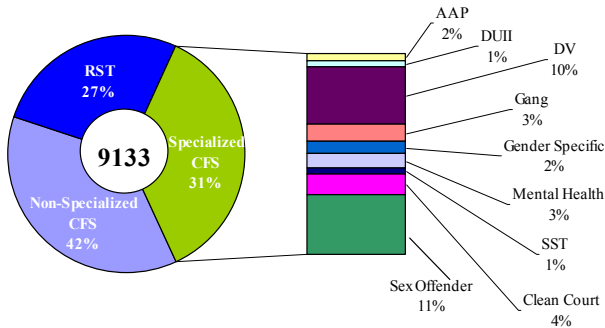
\*Sentenced adult felony and misdemeanors primary convictions only. Primary conviction charge is the most serious charge with a conviction and may differ from the original primary charge. June had 1,815 convictions; 24% were felonies.

## Adult Community Supervision: Caseloads



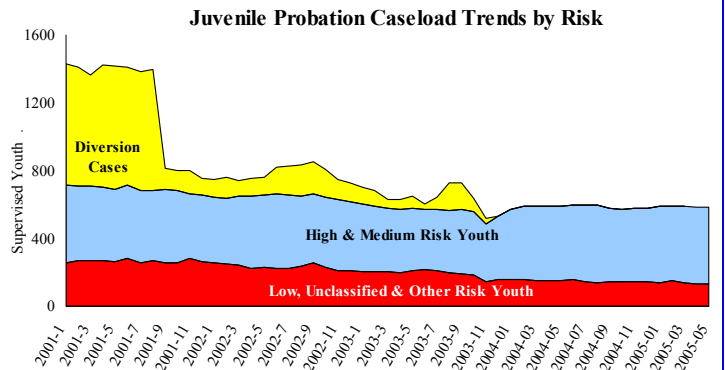
\*Reduced Supervision Team (RST) formerly casebank.

### Adult Active Caseload by Type\*: June 2005

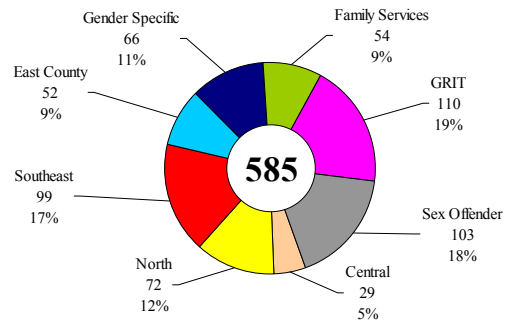


\*Less than 1% are "other" cases which have been included as non-specialized.

## Juvenile Community Supervision: Caseloads



### Juvenile Justice Caseload by Unit: May 2005



Average caseload per counselor was 24 cases for May.

**Notes.** The DA Adult Cases Received increased by more than 300—the highest since June 2004—due to increases in all categories except *Person offenses*. The decline in Adult Supervision has leveled off to roughly a 9,100 caseload per month. The Juvenile Justice caseload shows little overall change for the past several months. Court outcomes saw large increases in resolved cases likely due to the continued processing of outdated misdemeanor warrants.