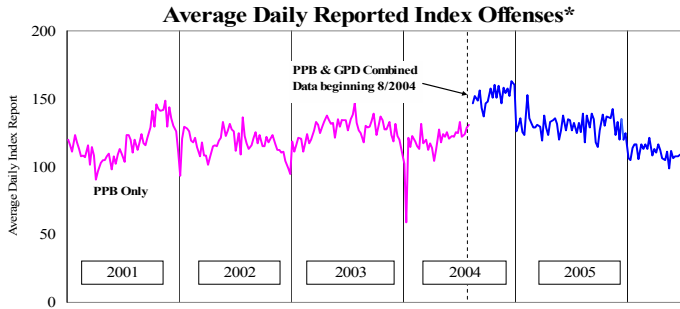


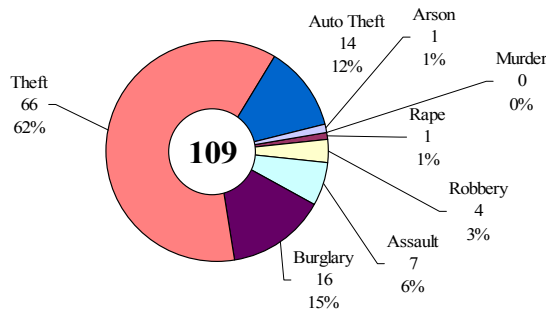
SAFETY PRIORITY BRIEF: JUNE 2006

Multnomah County: Reported Index Offenses



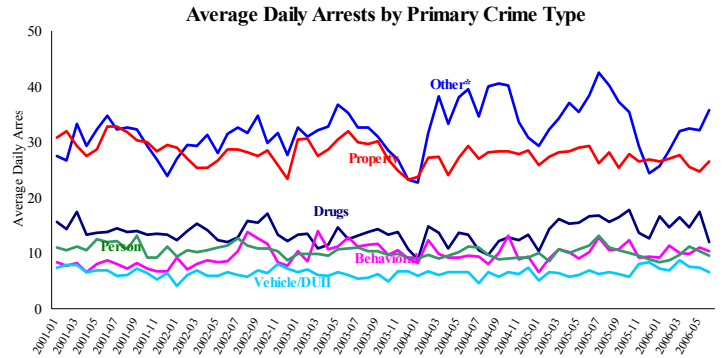
*The graph reflects the combined weekly index offenses data from Portland Police Bureau (PPB) and Gresham Police Dept (GPD), beginning 8/2004 (line in blue). According to LEADS (2005) data PPB and GPD account for 95% of all offenses county-wide. Index offenses account for about half of all reported offenses.

Average Daily Reported Index Offenses*



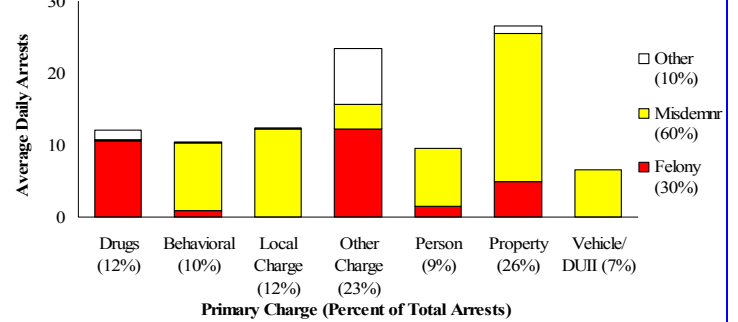
*Portland and Gresham, combined 4-week moving average for the week ending 6-17-06.

Multnomah County: Portland Arrests



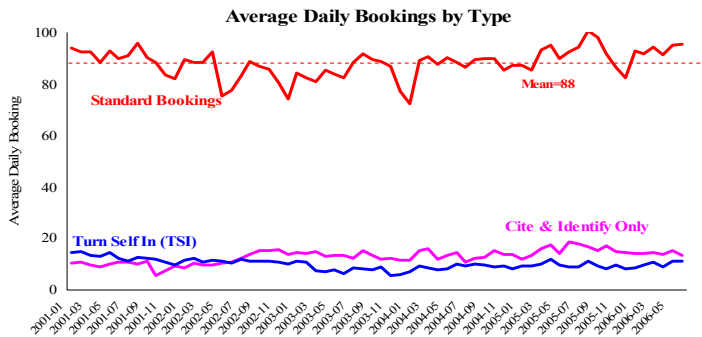
*Other largely reflects fugitive/warrant charges and local ordinances (DEF/PFZ). PPB data only, downloaded 7-20-2006.

Average Daily Arrests*: June (n=101)



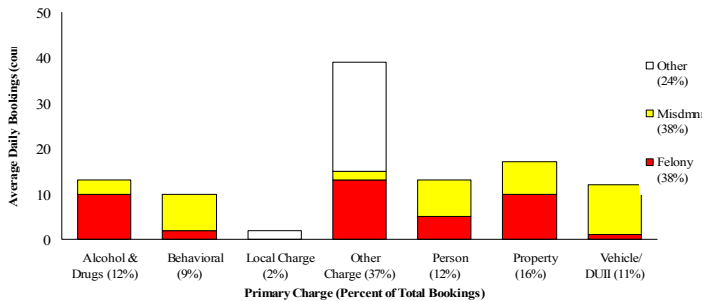
*There were 3,028 arrests in June. Local Charges include drug-free and prostitution free zone violations.

Sheriff: Bookings



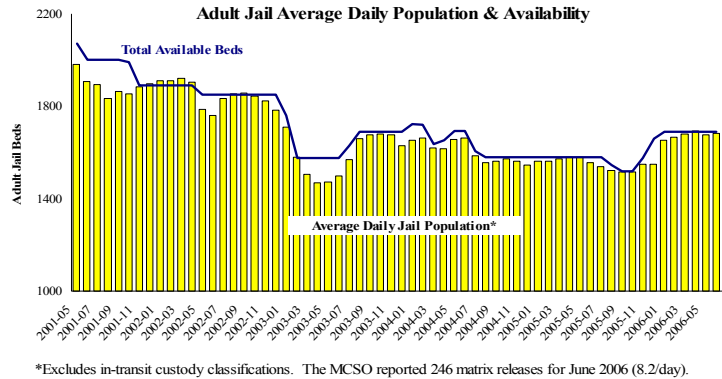
*In-transit bookings are not reported herein and account for ~4% of all bookings. June's average length of stay (ALS) per booking was 18.4 days.

Average Daily Bookings by Severity*: June (n=110)



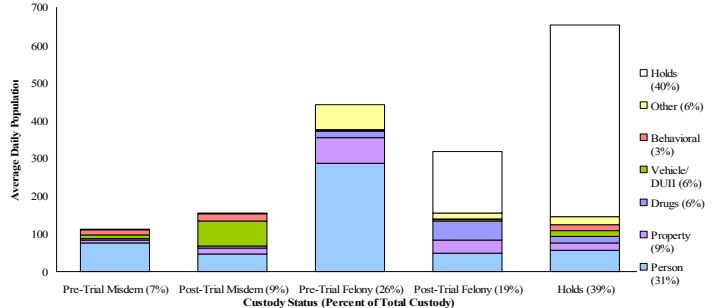
*Excludes Cite & ID. June had 3301 bookings (110/day).

Sheriff: Custody- Adult Jail Beds



*Excludes in-transit custody classifications. The MCSO reported 246 matrix releases for June 2006 (8.2/day).

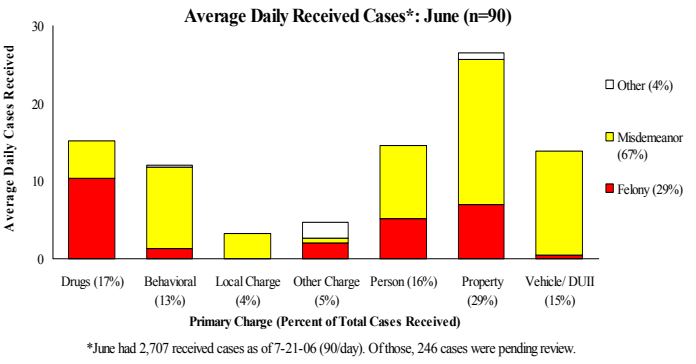
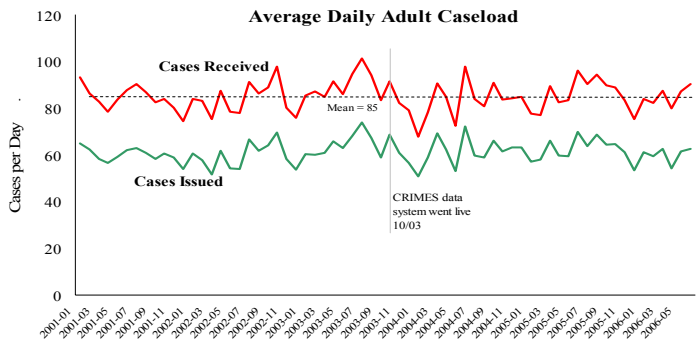
Average Daily Bed Use: June (n=1683)



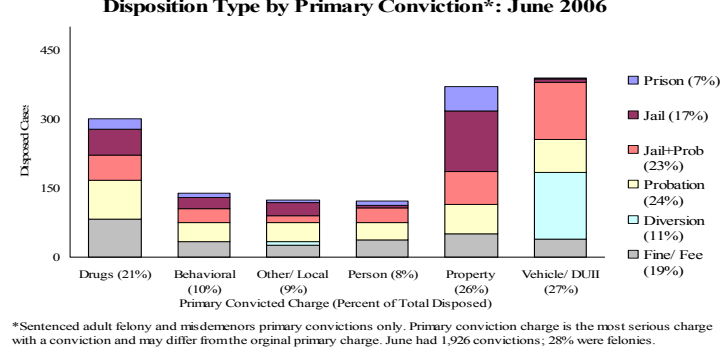
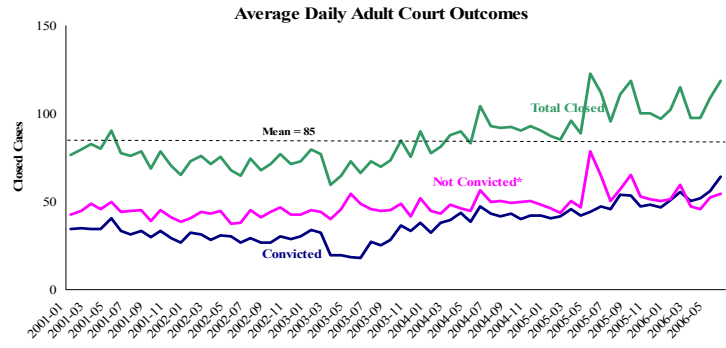
Average Daily Jail System Capacity=1690. Average Daily Population (ADP)=1683; there were 7 available beds on any given day.

Notes: Compared to this time last year, Portland reports a 17% reduction in Index offenses and a 19% reduction for Gresham, driven mostly by strong declines in theft and burglary. In both cities however, robbery has increased. Average daily arrests and standard bookings remained unchanged from May. The MCSO reported 246 matrix releases in June (avg. 8.2/day) and the average length of stay (ALS) increased from May (18 days per booking). June's overall jail utilization was 99.6%, leaving only 7 beds available on any given day.

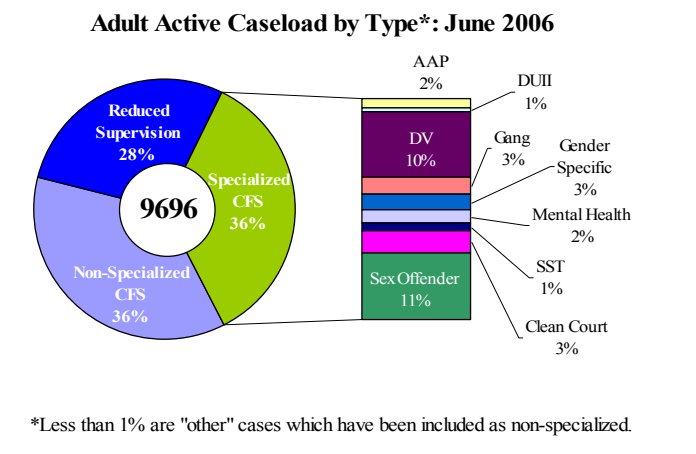
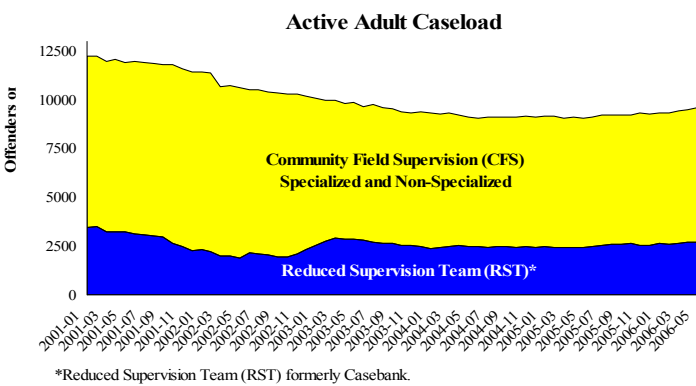
District Attorney: Adult Caseload



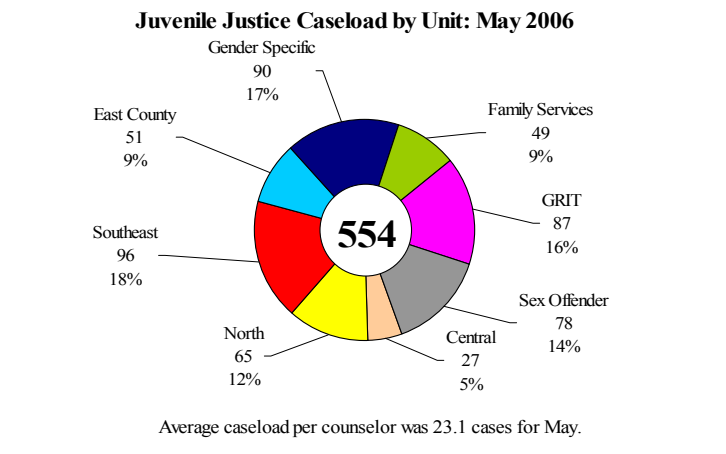
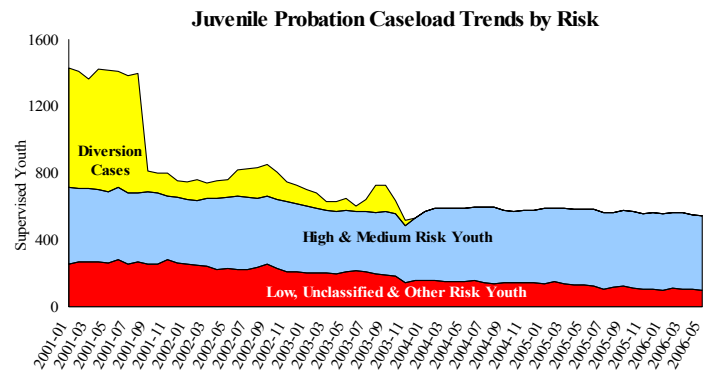
Court Processes: Sentencing Outcomes



Adult Community Supervision: Caseloads



Juvenile Community Supervision: Caseloads



Notes: The Adult community supervision caseloads continue to increase and are now at the same level as July 2003 for both *Reduced Supervision Team* and *Community Field Supervision* caseloads. The DA *Adult Caseloads* appeared within normal parameters. *Juvenile Justice Caseloads* remain unchanged from April.