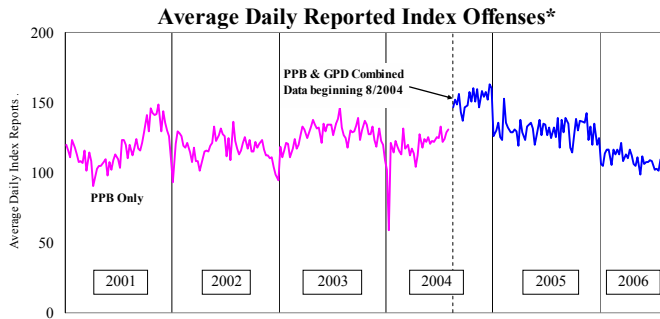


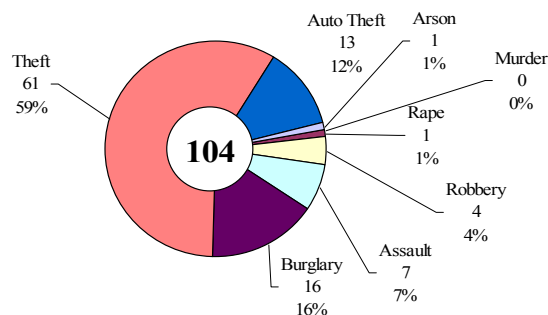
SAFETY PRIORITY BRIEF: JULY 2006

Multnomah County: Reported Index Offenses



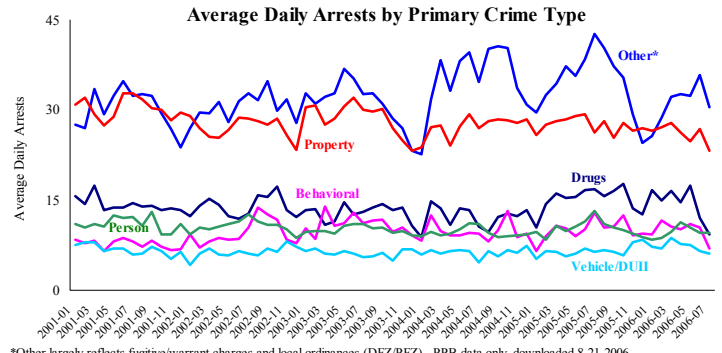
*The graph reflects the combined weekly index offenses data from Portland Police Bureau (PPB) and Gresham Police Dept (GPD), beginning 8/2004 (line in blue). According to LEDS (2005) data PPB and GPD account for 95% of all offenses county-wide. Index offenses account for about half of all reported offenses.

Average Daily Reported Index Offenses*



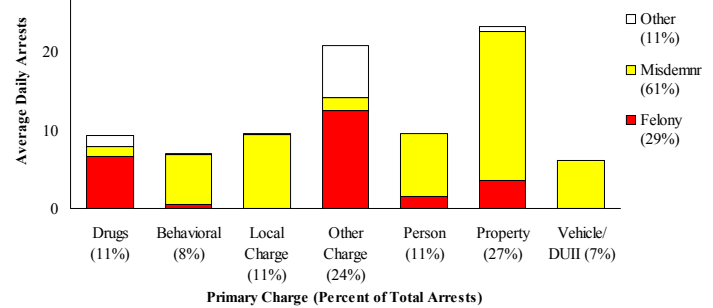
*Portland and Gresham, combined 4-week moving average for the week ending 7-15-06.

Multnomah County: Portland Arrests



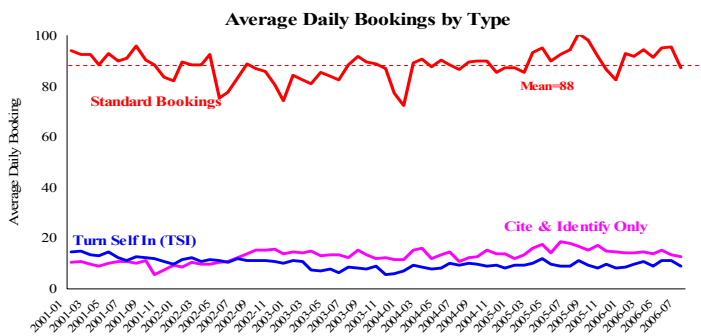
*Other largely reflects fugitive/warrant charges and local ordinances (DFZ/PFZ). PPB data only, downloaded 8-21-2006.

Average Daily Arrests*: July (n=86)



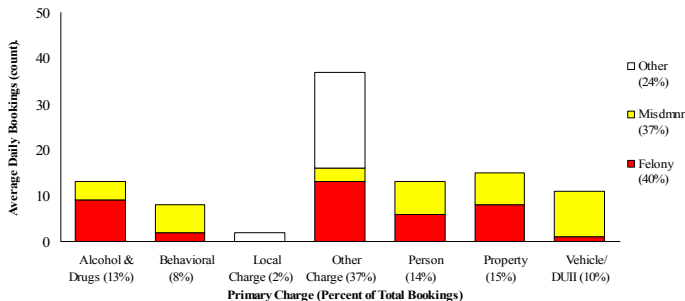
*There were 2,654 arrests in July. Local Charges include drug-free and prostitution free zone violations.

Sheriff: Bookings



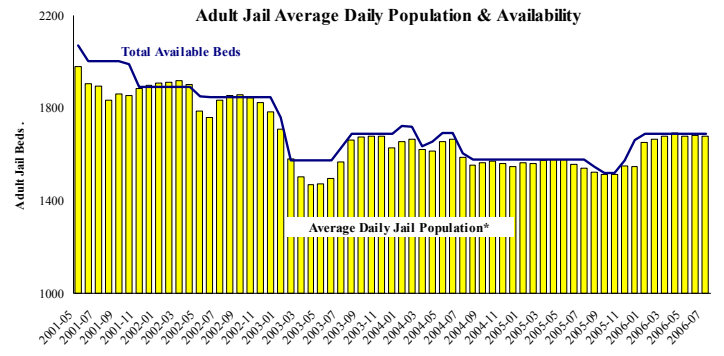
*In-transit bookings are not reported herein and account for ~4% of all bookings. July's average length of stay (ALS) per booking was 16.5 days.

Average Daily Bookings by Severity*: July (n=99)



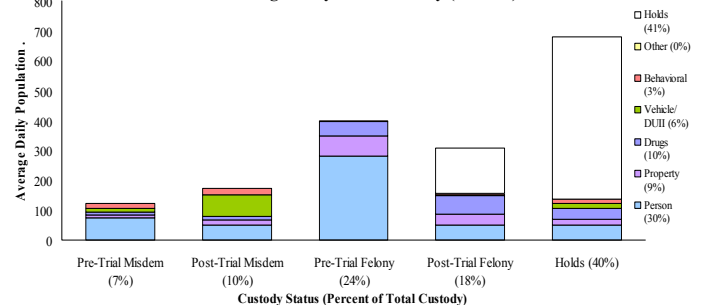
*Excludes Cite & ID. July had 3058 bookings (99/day).

Sheriff: Custody- Adult Jail Beds



*Excludes in-transit custody classifications. The MCSO reported 197 matrix releases for July 2006 (6.4/day).

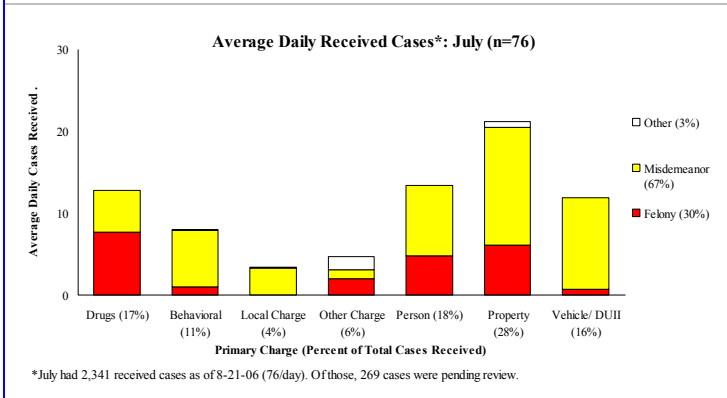
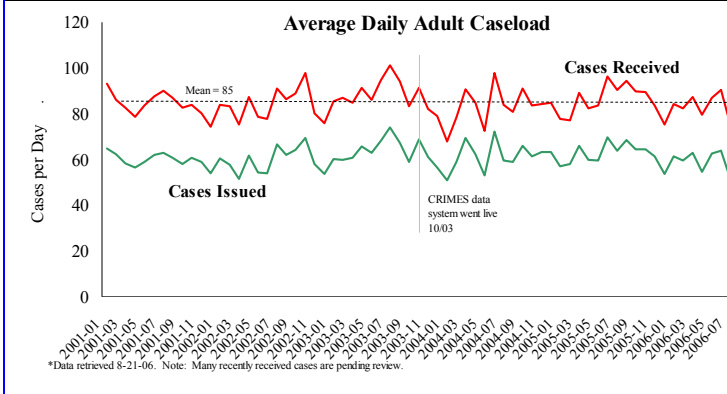
Average Daily Bed Use: July (n=1690)



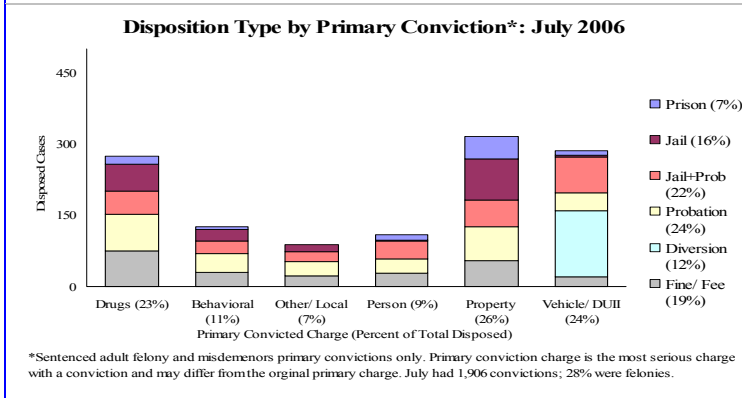
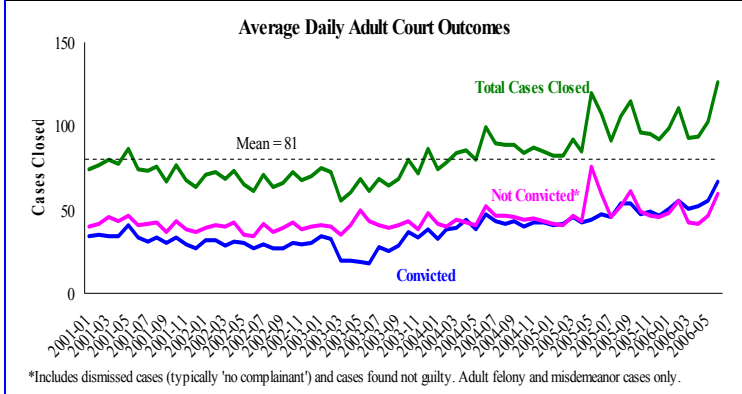
Average Daily Jail System Capacity=1690. Average Daily Population (ADP)=1678; there were 12 available beds on any given day.

Notes: Reported Index Offenses remain significantly lower than at this time last year; Portland and Gresham report a 17% and 18% reduction, respectively. However, reported Robbery is higher than last year for both cities. Average daily arrests declined (-15%) over June with a related decline in average daily Standard Bookings (-8%). The average length of stay per booking (ALS) dropped to 16.5 days. The lower ALS and fewer bookings reduced matrix release levels in July to 197 (avg. 6.4/day).

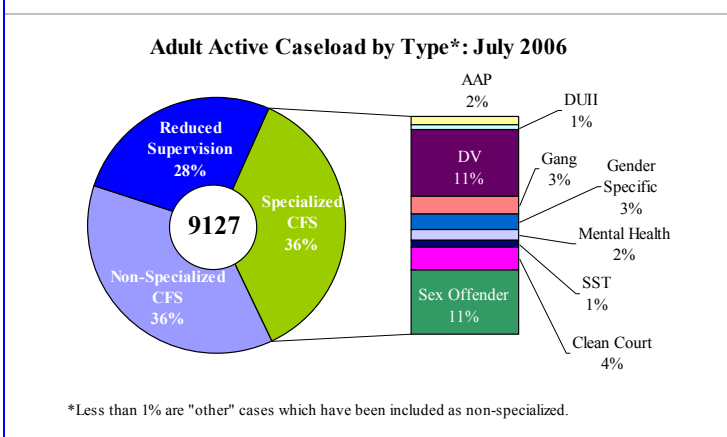
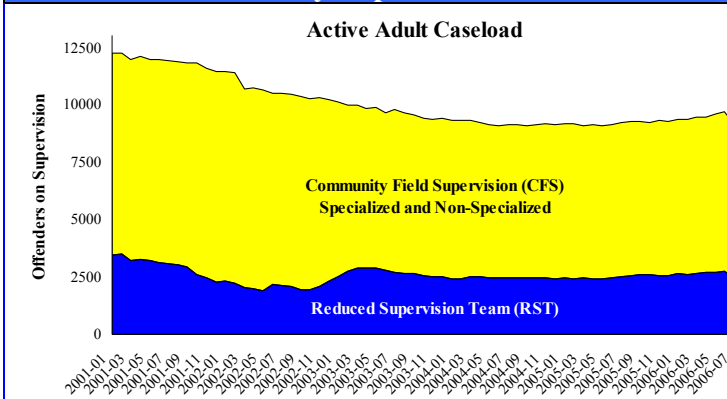
District Attorney: Adult Caseload



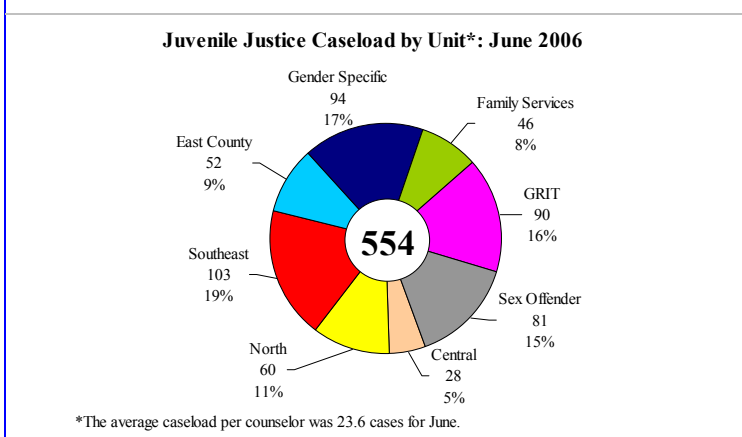
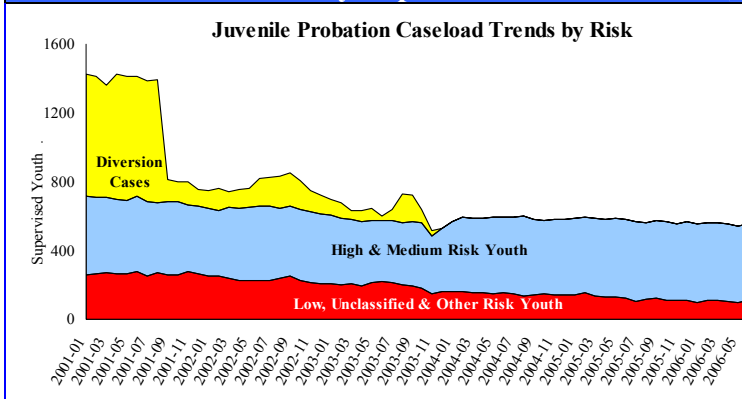
Court Processes: Sentencing Outcomes



Adult Community Supervision: Caseloads



Juvenile Community Supervision: Caseloads



Notes: Following declines in arrest volume, the DA's average daily cases received for prosecution declined 15%. The adult community supervision total caseload dropped by 6%; there was a reduction in the *Reduced Supervision Team*, *Specialized* and *Non-Specialized* caseloads, -12% and -4%, respectively. The decrease reflects a 25% reduction in funding for misdemeanor probation supervision restricting the number and type of cases now placed on formal probation.