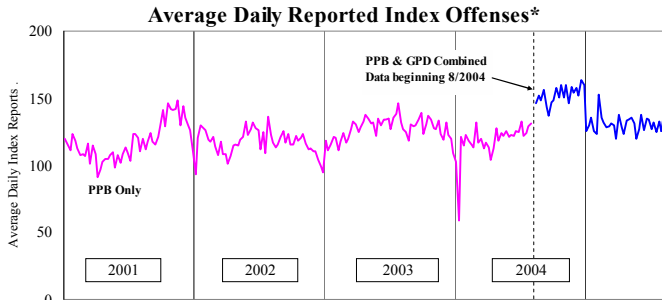


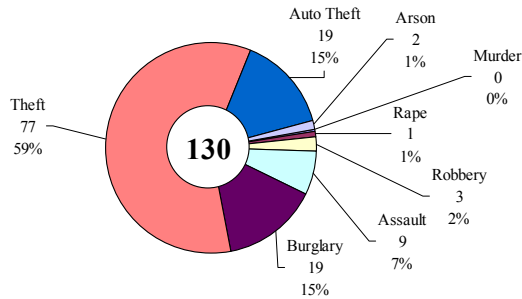
SAFETY PRIORITY BRIEF: JULY 2005

Multnomah County: Reported Index Offenses



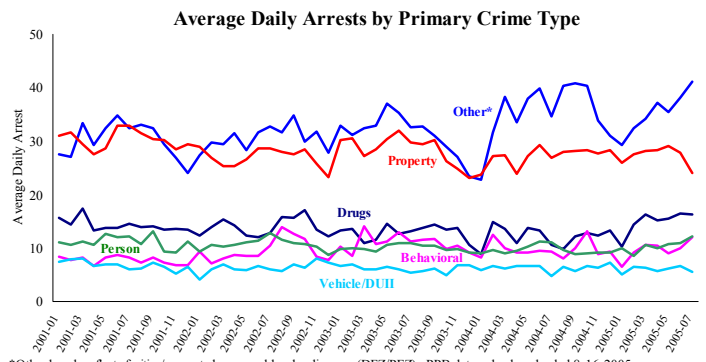
*The graph reflects the combined weekly index offenses data from Portland Police Bureau (PPB) and Gresham Police Dept (GPD), beginning 8/2004 (line in blue). According to LEDS (2005) data PPB and GPD account for 95% of all offenses county-wide. Index offenses account for about half of all reported offenses.

Average Daily Reported Index Offenses*



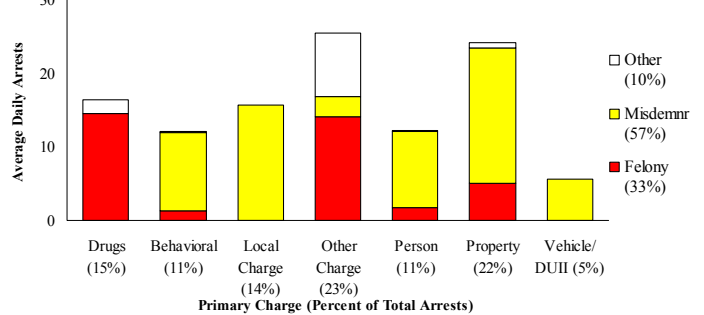
*Portland and Gresham, combined 4-week moving average for the week ending 8-17-05.

Multnomah County: Portland Arrests



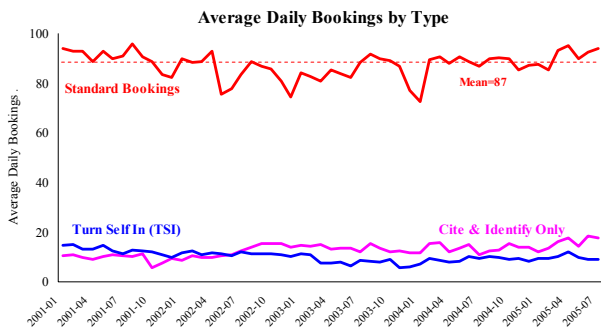
*Other largely reflects fugitive/warrant charges and local ordinances (DFZ/PFZ). PPB data only, downloaded 8-16-2005.

Average Daily Arrests*: July (n=111)



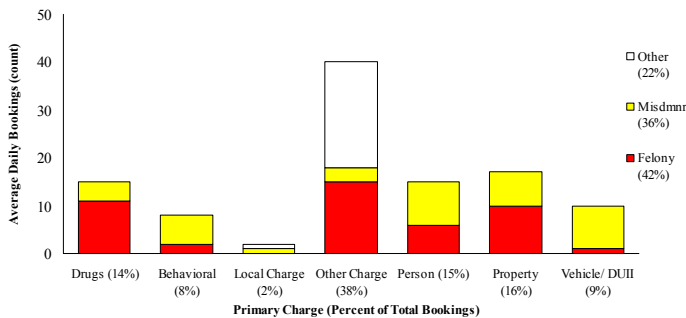
*There were 3,451 arrests in June. Local Charges include drug-free and prostitution free zone violations.

Sheriff: Bookings



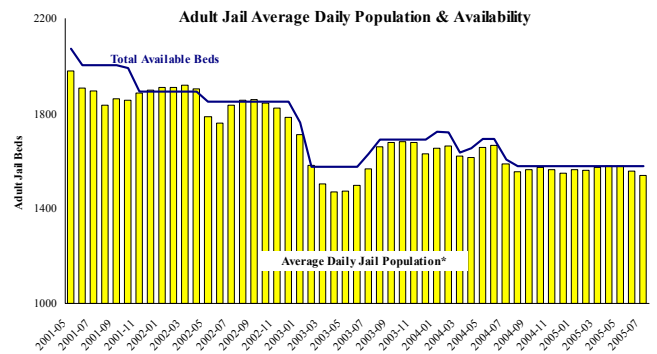
*In-transit bookings are not reported herein and account for ~4% of all bookings. July's average length of stay (ALS) per booking was revised to 15.0 days.

Average Daily Bookings by Severity*: July (n=106)



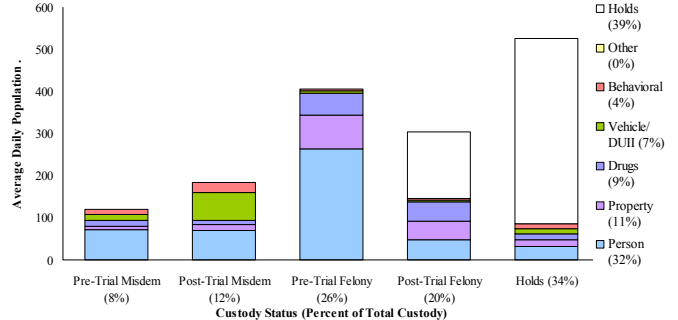
*Excludes Cite & ID. July had 3273 bookings (106/day). Corrections Health reported 570 psych-alerts (18.4/day).

Sheriff: Custody- Adult Jail Beds



*Excludes in-transit custody classifications. The MCSO reported 391 matrix releases for July 2005 (12.6/day).

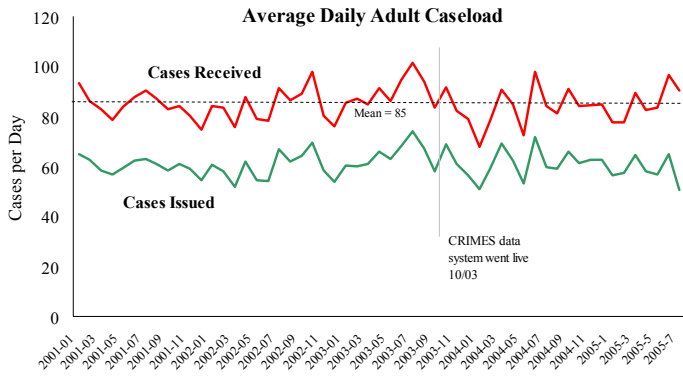
Average Daily Bed Use: July (n=1541)



Average daily jail system capacity=1579. Average Daily Population (ADP)=1541; there were 38 available beds on any given day.

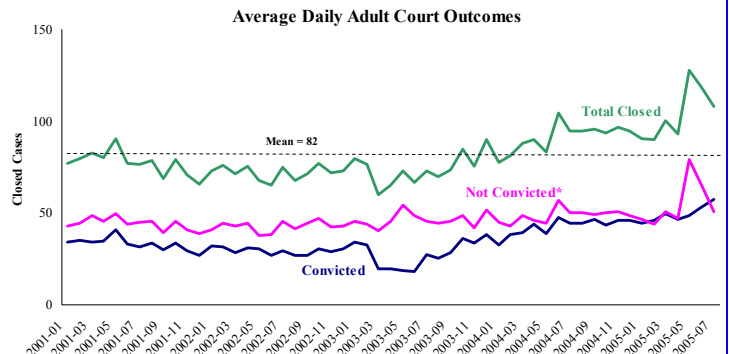
Notes: Average Daily Reported Offenses decreased due to declined Larceny and Property Crimes in both Gresham and Portland. Average Daily Arrests increased slightly due to increases in all categories except Property and Vehicle (declined) and Drugs (stayed the same). Average Daily Bookings increased, due to increases in bookings for all charge types except Vehicle. The MCSO reported 391 matrix releases (average 12.6 per day), slightly above the 3-month average of 348. The Average Length of Stay (ALS) was 15.0, nearly three days shorter than June's ALS.

District Attorney: Adult Caseload



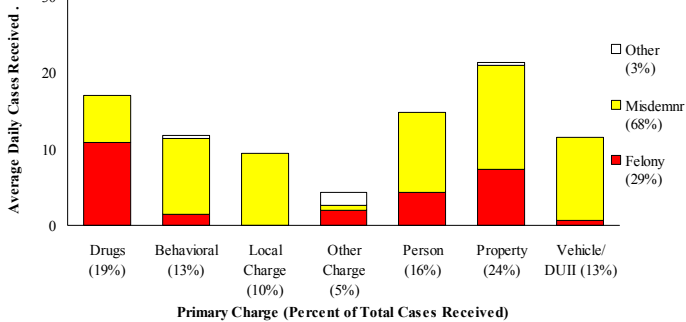
*Data retrieved 8-17-05. Note: Many recently received cases are pending review.

Court Processes: Sentencing Outcomes



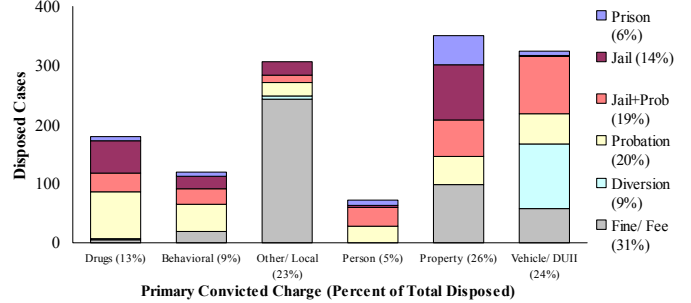
*Includes dismissed cases (typically no complainant) and cases found not guilty. Adult felony and misdemeanor cases only.

Average Daily Received Cases*: July (n=90)



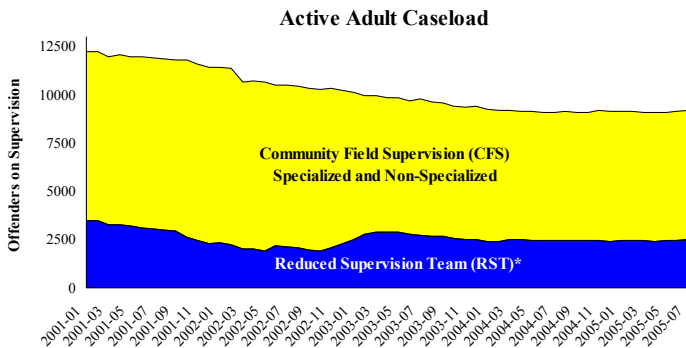
*May had 2,802 received cases as of 8-17-05 (90/day). Of those, 616 cases were pending review.

Disposition Type by Primary Conviction*: July 2005



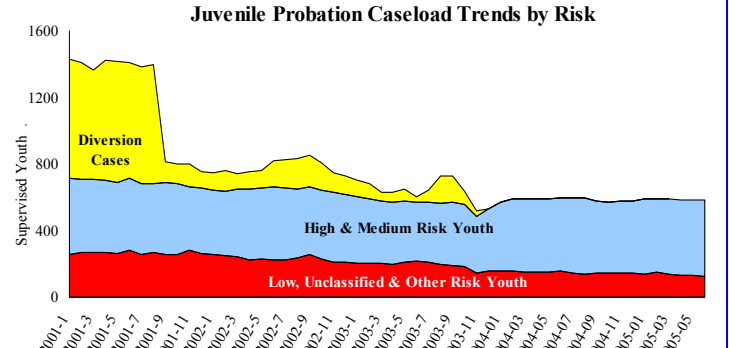
*Sentenced adult felony and misdemeanors primary convictions only. Primary conviction charge is the most serious charge with a conviction and may differ from the original primary charge. July had 1,784 convictions; 28% were felonies.

Adult Community Supervision: Caseloads

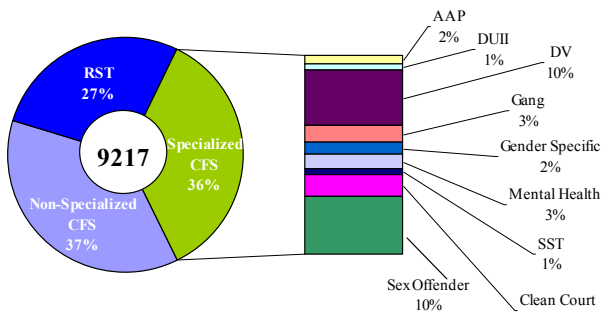


*Reduced Supervision Team (RST) formerly Casebank.

Juvenile Community Supervision: Caseloads

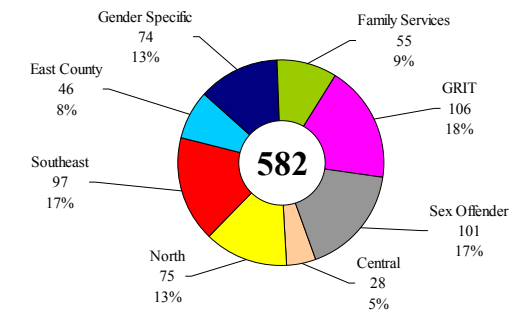


Adult Active Caseload by Type*: July 2005



*Less than 1% are "other" cases which have been included as non-specialized.

Juvenile Justice Caseload by Unit: June 2005



Average caseload per counselor was 24 cases for June.

Notes. The DA Adult Cases Received declined due to a large decrease in *Property Offenses* and a small decrease in *Vehicle Offenses*, despite increases in all other categories. The Adult Supervision increased due to increases in Non-Specialized and RST caseloads. The Juvenile Justice caseload stayed unchanged for June.