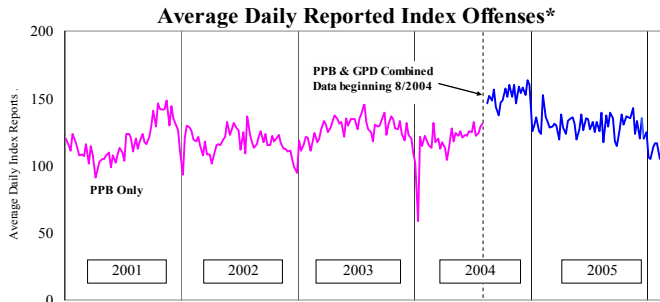


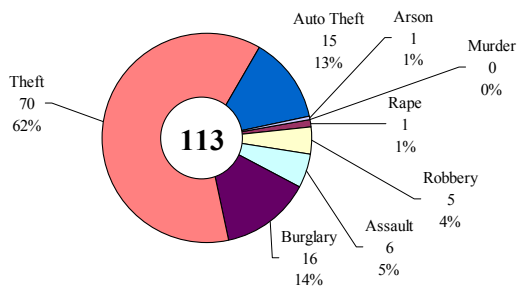
SAFETY PRIORITY BRIEF: JANUARY 2006

Multnomah County: Reported Index Offenses



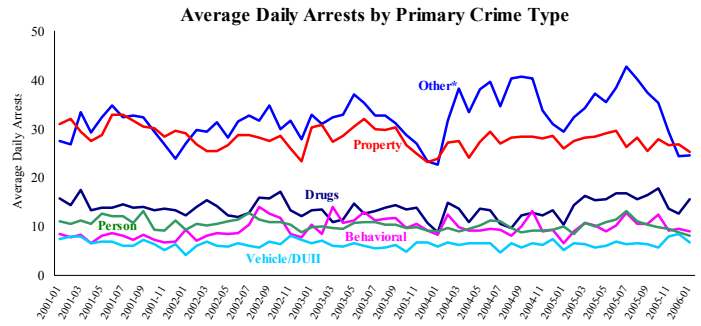
*The graph reflects the combined weekly index offenses data from Portland Police Bureau (PPB) and Gresham Police Dept (GPD), beginning 8/2004 (line in blue). According to LEADS (2005) data PPB and GPD account for 95% of all offenses county-wide. Index offenses account for about half of all reported offenses.

Average Daily Reported Index Offenses*



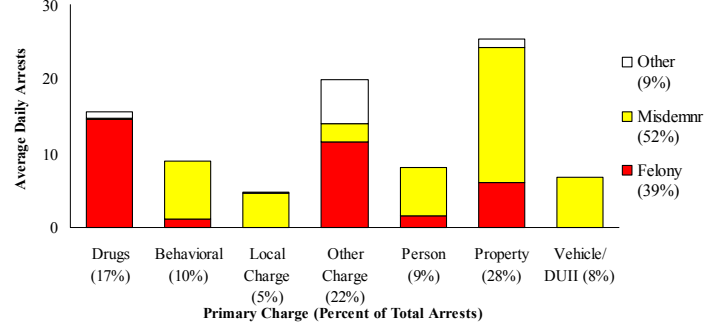
*Portland and Gresham, combined 4-week moving average for the week ending 1-28-06.

Multnomah County: Portland Arrests



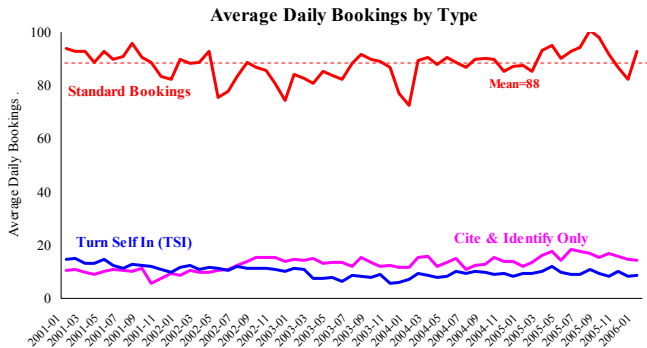
*Other largely reflects fugitive/warrant charges and local ordinances (DFZ/PFZ). PPB data only, downloaded 2-16-2006.

Average Daily Arrests*: January (n=89)



*There were 2,773 arrests in January. Local Charges include drug-free and prostitution free zone violations.

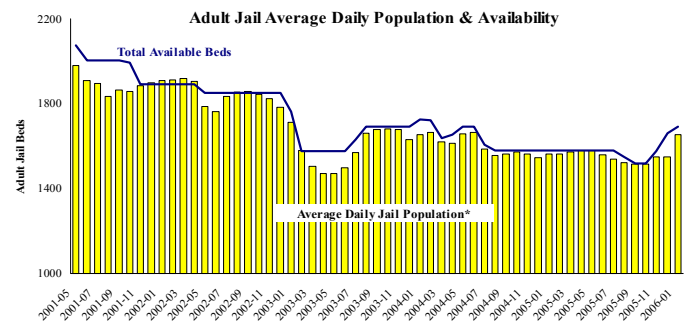
Sheriff: Bookings



*In-transit bookings are not reported herein and account for ~4% of all bookings. January's average length of stay (ALS) per booking was 17.04 days. DSSJ offline; source MCSO report January report (Mobius).

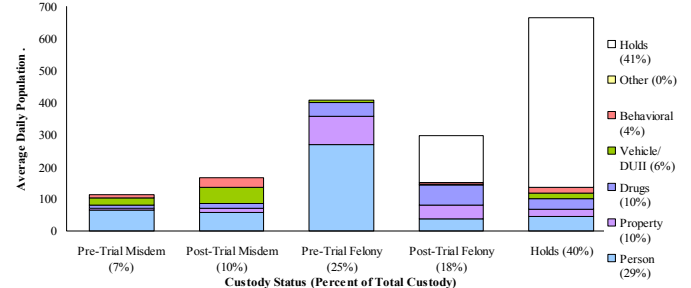
DSS-Justice eSWIS Conversation Not Complete
Data Unavailable for January 2006
(accessed 2/21/06)

Sheriff: Custody- Adult Jail Beds



*Excludes in-transit custody classifications. The MCSO reported 168 matrix releases for January 2006 (5.4/day).

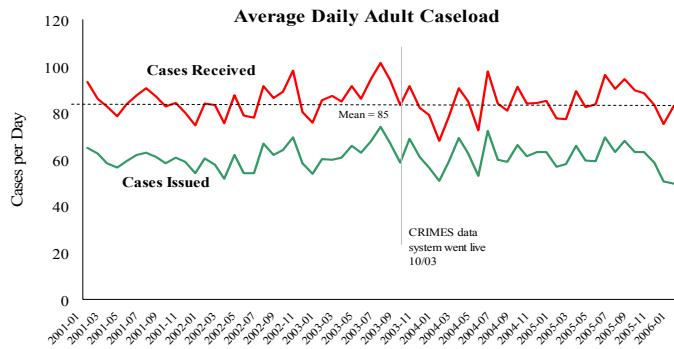
Average Daily Bed Use: January (n=1653)



Average Daily Jail System Capacity=1690. Average Daily Population (ADP)=1653; there were 37 available beds on any given day.

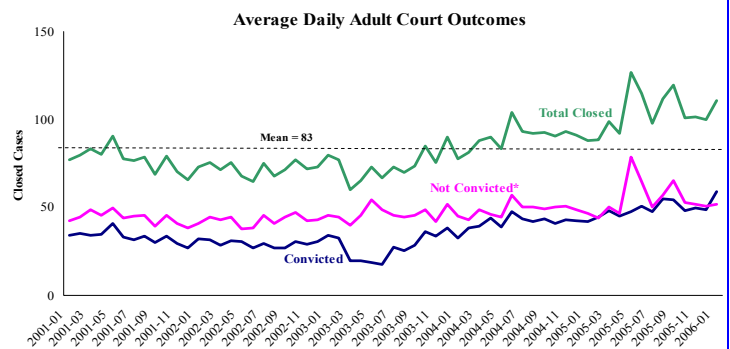
Notes: Reported offenses continue to decline—January reports were 16% lower compared to January 2005 due to decreases in the incidents of *theft*, *auto theft*, and *burglary*. The average daily arrests remained unchanged, however there were notable increases in *Drug* arrests. Standard bookings rebounded, increasing 13% due possibly in part to drugs charges—booking detail currently unavailable. The MCSO reported 168 matrix releases in January (avg. 5.4/day) and the Average Length of Stay (ALS) decreased by 2 days (17/days per booking). The average number of beds available on any given day was 37.

District Attorney: Adult Caseload



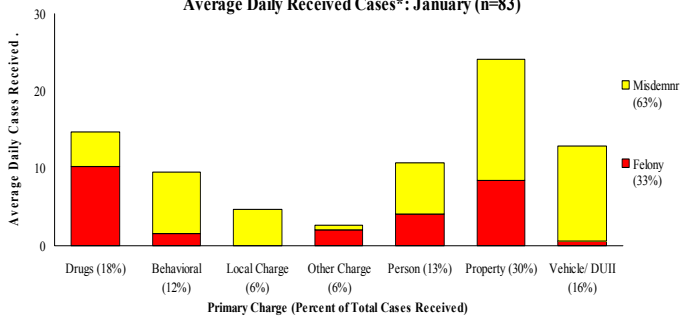
*Data retrieved 2-21-06. Note: Many recently received cases are pending review.

Court Processes: Sentencing Outcomes



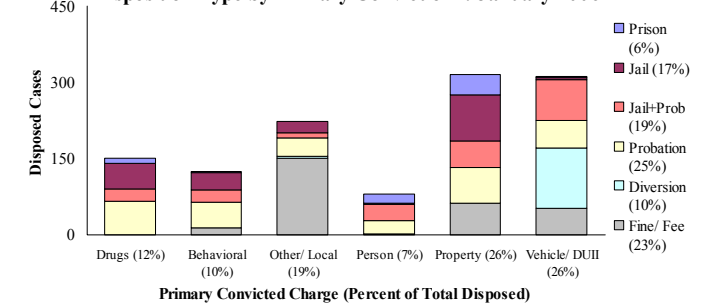
*Includes dismissed cases (typically no complainant) and cases found not guilty. Adult felony and misdemeanor cases only.

Average Daily Received Cases*: January (n=83)



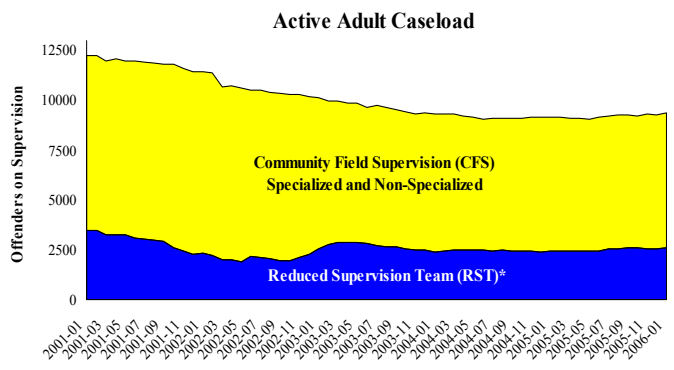
*January had 2,573 received cases as of 2-21-06 (83/day). Of those, 555 cases were pending review.

Disposition Type by Primary Conviction*: January 2006



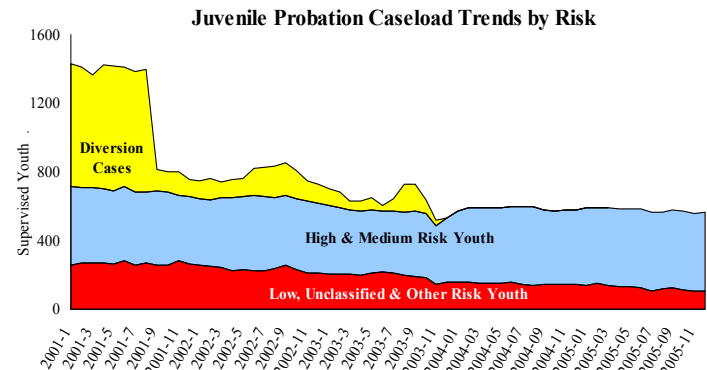
*Sentenced adult felony and misdemeanors primary convictions only. Primary conviction charge is the most serious charge with a conviction and may differ from the original primary charge. January had 1,824 convictions; 31% were felonies.

Adult Community Supervision: Caseloads

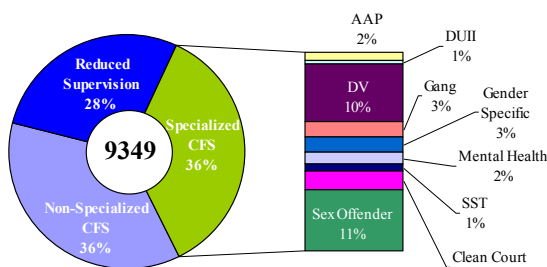


*Reduced Supervision Team (RST) formerly Casebank.

Juvenile Community Supervision: Caseloads

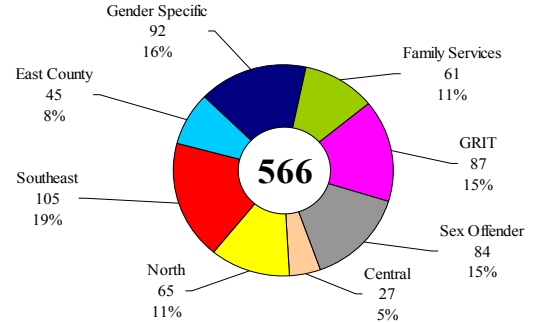


Adult Active Caseload by Type*: January 2006



*Less than 1% are "other" cases which have been included as non-specialized.

Juvenile Justice Caseload by Unit: December 2005



Average caseload per counselor was 24.5 cases for December.

Notes: The DA adult cases received increased to their multi-year average driven largely by new drug cases. Sentencing outcomes showed a 10% increase in total closed cases, with increases across all categories. The DCJ adult supervision caseload increased over December due to slight increases in the *Specialized* and *Reduced Supervision Team (RST)* caseloads. DCJ's juvenile caseload is showing signs of increasing risk—the larger *High-Medium Risk* caseloads have increased 5% since December 2004, while at the same time the smaller *Low/Unclassified/Other Risk* caseloads have declined nearly 26%.