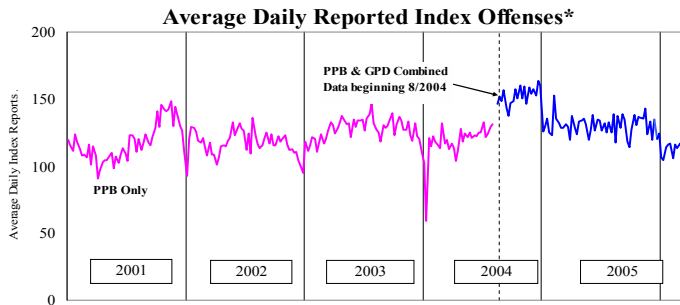


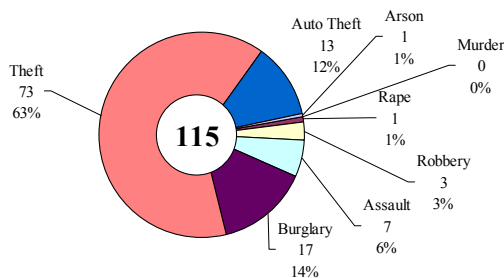
SAFETY PRIORITY BRIEF: FEBRUARY 2006

Multnomah County: Reported Index Offenses



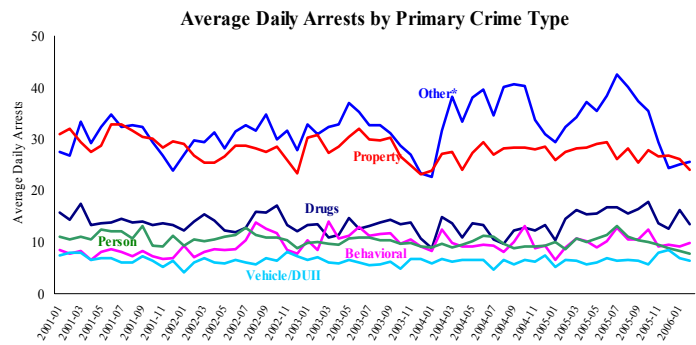
*The graph reflects the combined weekly index offenses data from Portland Police Bureau (PPB) and Gresham Police Dept (GPD), beginning 8/2004 (line in blue). According to LEDS (2005) data PPB and GPD account for 95% of all offenses county-wide. Index offenses account for about half of all reported offenses.

Average Daily Reported Index Offenses*



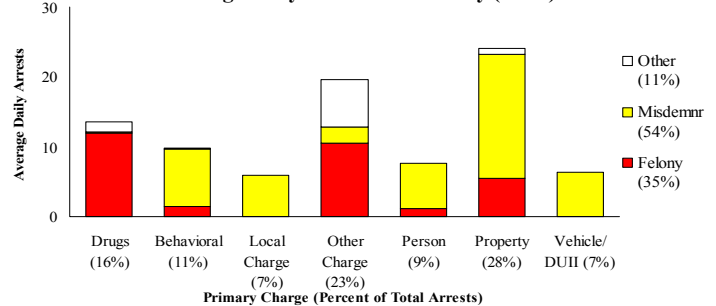
*Portland and Gresham, combined 4-week moving average for the week ending 2-25-06.

Multnomah County: Portland Arrests



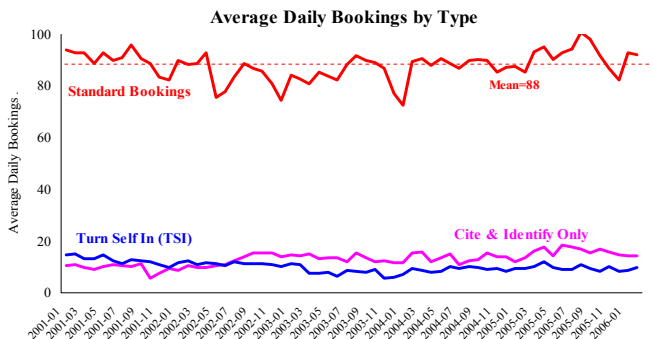
*Other largely reflects fugitive/warrant charges and local ordinances (DFZ/PFZ). PPB data only, downloaded 3-16-2006.

Average Daily Arrests*: February (n=87)



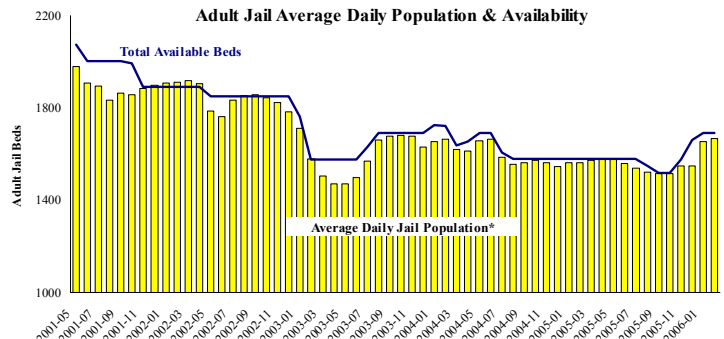
*There were 2,437 arrests in February. Local Charges include drug-free and prostitution free zone violations.

Sheriff: Bookings



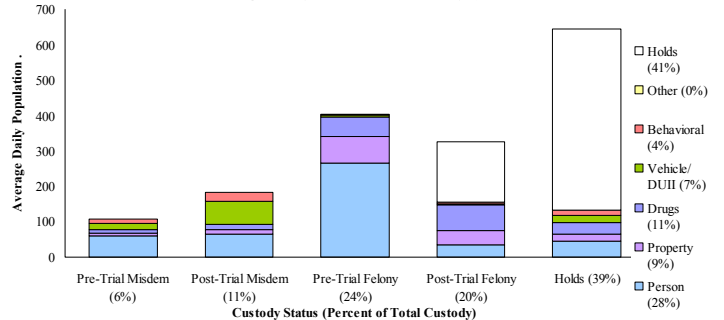
*In-transit bookings are not reported herein and account for ~4% of all bookings. February's average length of stay (ALS) per booking was 17.79 days. DSSJ offline; source MCSO February report (Mobiis).

Sheriff: Custody- Adult Jail Beds



*Excludes in-transit custody classifications. The MCSO reported 126 matrix releases for February 2006 (4.5/day).

Average Daily Bed Use: February (n=1667)

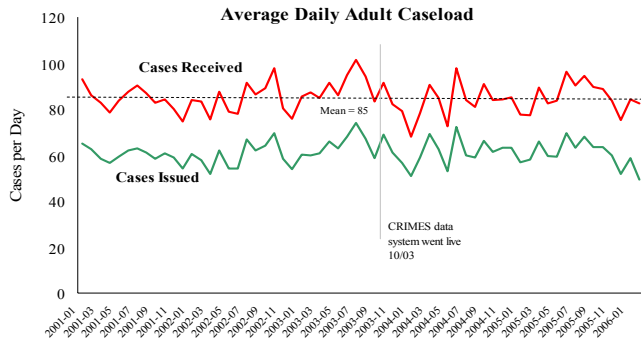


Average Daily Jail System Capacity=1690. Average Daily Population (ADP)=1667; there were 23 available beds on any given day.

DSS-Justice eSWIS Conversation Not Complete
Data Unavailable for January 2006
(accessed 3/22/06)

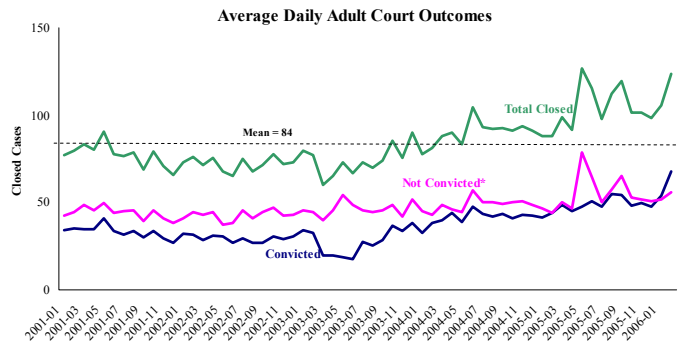
Notes: Reported index offenses are 15% lower compared to this time last year (PPB). Average daily arrests decreased slightly with reductions in most categories. The proportion felony arrests declined, possibly due to increases in *local charges* (these are typically drug/prostitution free zone violations). Standard bookings declined 12%. The MCSO reported 126 matrix releases in February (avg. 4.5/day) and the average length of stay (ALS) remained virtually the same as January (18/days per booking). February's overall jail utilization was 98.6%, leaving only 23 beds available on any given day.

District Attorney: Adult Caseload



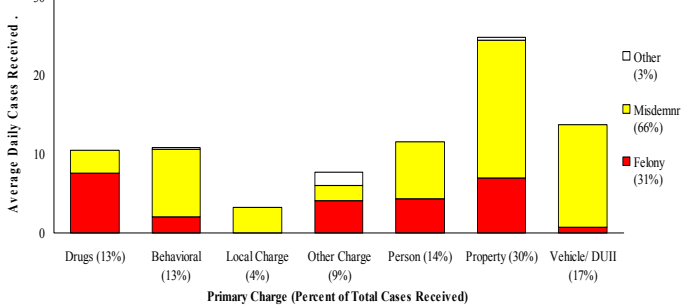
*Data retrieved 3-20-06. Note: Many recently received cases are pending review.

Court Processes: Sentencing Outcomes



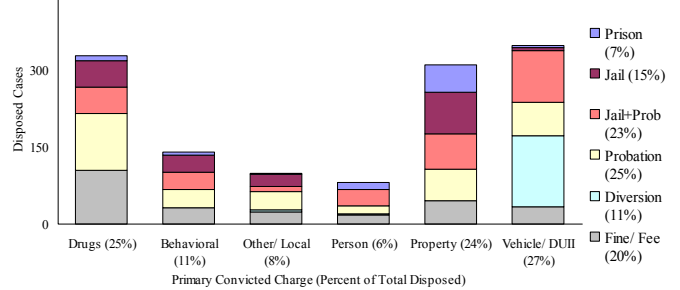
*Includes dismissed cases (typically no complainant) and cases found not guilty. Adult felony and misdemeanor cases only.

Average Daily Received Cases*: February (n=82)



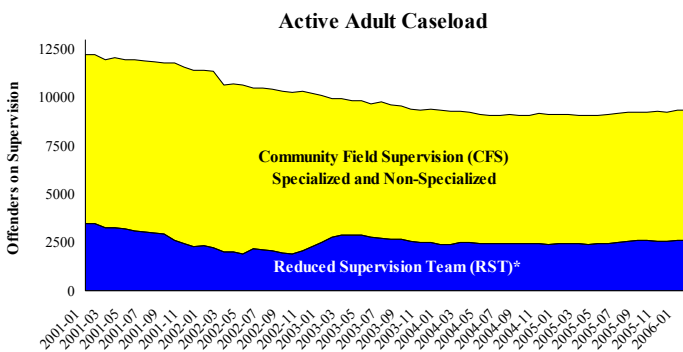
*February had 2,308 received cases as of 3-20-06 (82/day). Of those, 471 cases were pending review.

Disposition Type by Primary Conviction*: February 2006



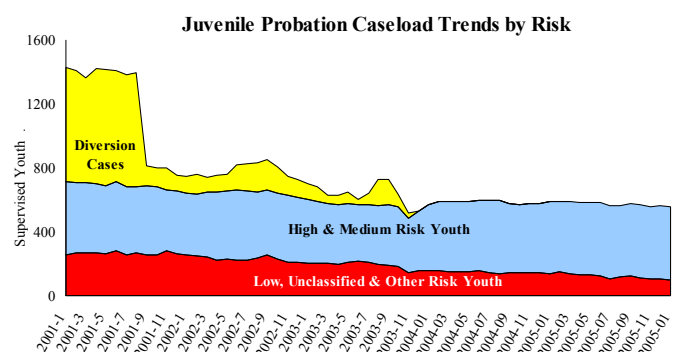
*Sentenced adult felony and misdemeanors primary convictions only. Primary conviction charge is the most serious charge with a conviction and may differ from the original primary charge. February had 1,895 convictions; 31% were felonies.

Adult Community Supervision: Caseloads

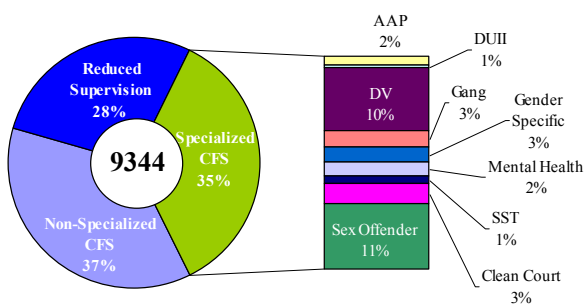


*Reduced Supervision Team (RST) formerly Casebank.

Juvenile Community Supervision: Caseloads

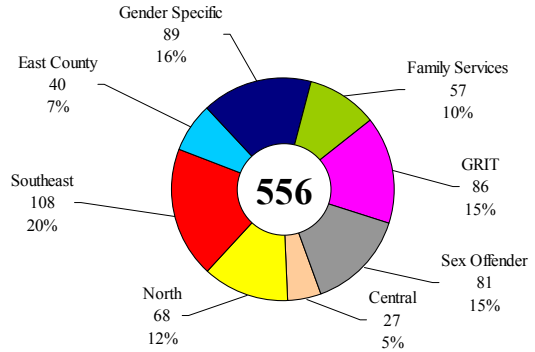


Adult Active Caseload by Type*: February 2006



*Less than 1% are "other" cases which have been included as non-specialized.

Juvenile Justice Caseload by Unit: January 2006



Average caseload per counselor was 23.3 cases for January.

Notes: The DA adult cases remained largely unchanged; reduction in new *Drug* cases were off-set by increases in *Other Charges*. Average daily sentencing outcomes increased 15% from January, led by a doubling in *Drug* convictions but tempered by substantial declines in *Other/ Local* convictions. DCJ's juvenile caseload continues its trend of increasing risk with shifts from *Low/Unclassified/Other Risk* caseloads to *High-Medium Risk* caseloads.