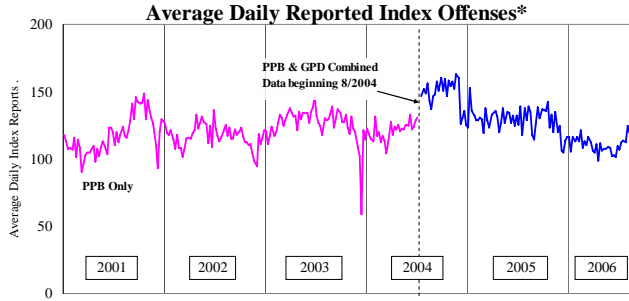


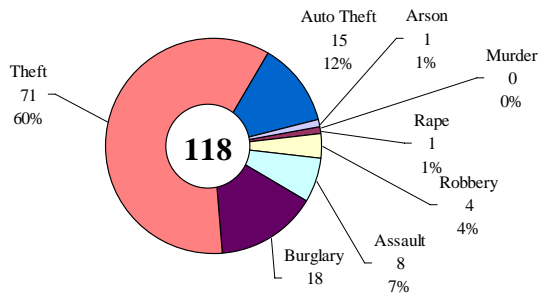
SAFETY PRIORITY BRIEF: AUGUST 2006

Multnomah County: Reported Index Offenses



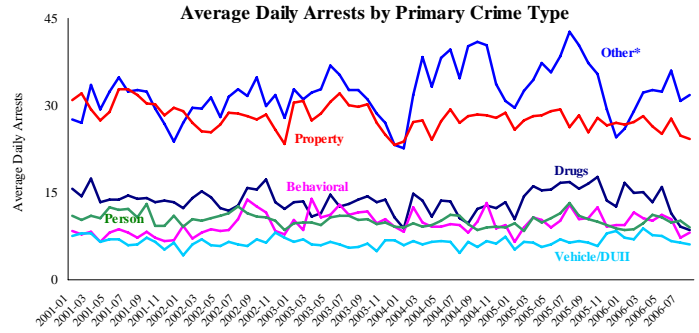
*The graph reflects the combined weekly index offenses data from Portland Police Bureau (PPB) and Gresham Police Dept (GPD), beginning 8/2004 (line in blue). According to LEADS (2005) data PPB and GPD account for 95% of all offenses county-wide. Index offenses account for about half of all reported offenses.

Average Daily Reported Index Offenses*



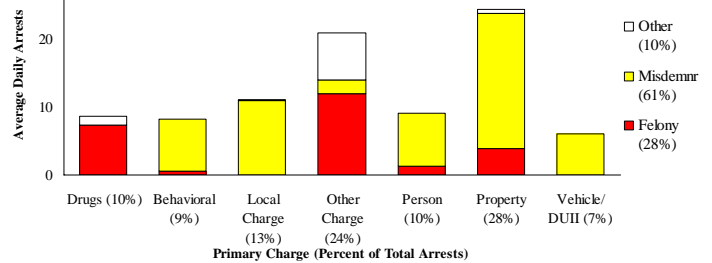
*Portland and Gresham, combined 4-week moving average for the week ending 9-2-06.

Multnomah County: Portland Arrests



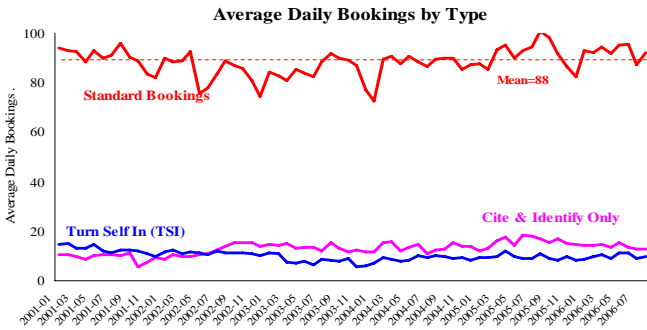
*Other largely reflects fugitive/warrant charges and local ordinances (DFZ/PFZ). PPB data only, downloaded 9-21-2006.

Average Daily Arrests*: August (n=88)



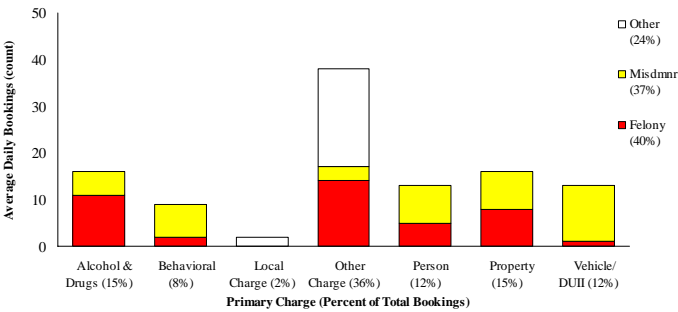
*There were 2,727 arrests in August. Local Charges include drug-free and prostitution free zone violations.

Sheriff: Bookings



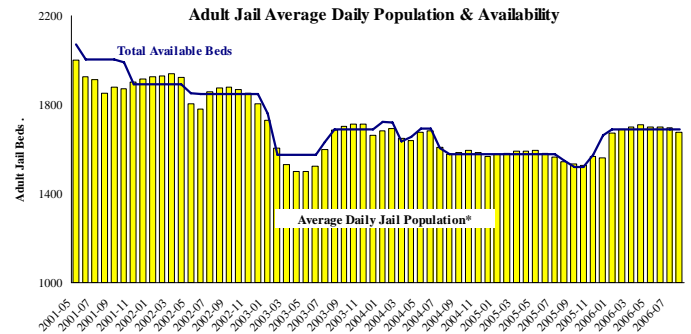
*In-transit bookings are not reported herein and account for ~4% of all bookings. August's average length of stay (ALS) per booking was 17.8 days.

Average Daily Bookings by Severity*: August (n=106)



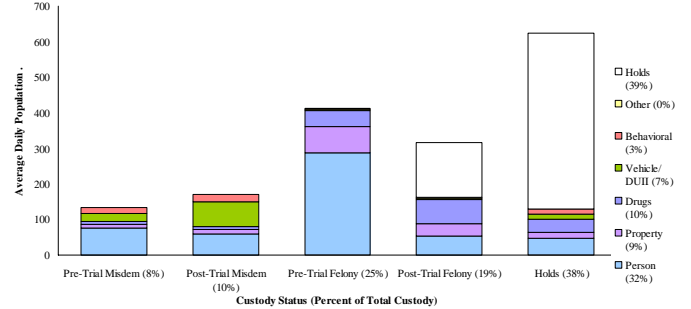
*Excludes Cite & ID. August had 3284 bookings (106/day). Corrections Health reported 452 psych-alerts (14.6/day).

Sheriff: Custody- Adult Jail Beds



*Excludes in-transit custody classifications. The MCSO reported 26 matrix releases for August 2006 (.84/day).

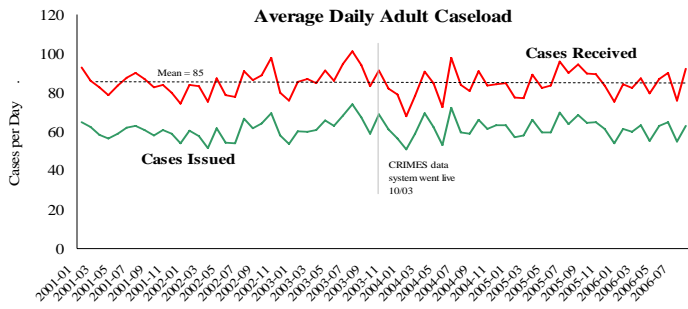
Average Daily Bed Use: August (n=1657)



Average Daily Jail System Capacity=1690. Average Daily Population (ADP)=1657; there were 33 available beds on any given day.

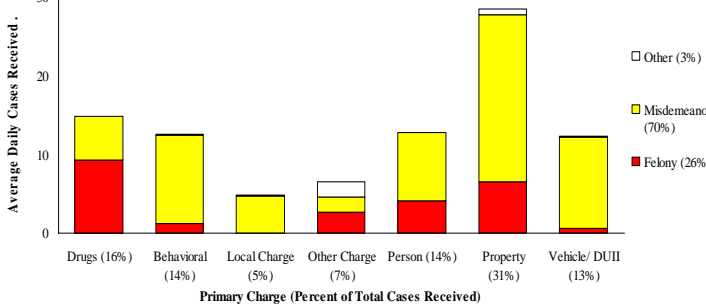
Notes: Average reported daily index offenses increased 13% from last month. The increase is driven by residential burglary. However, compared to last year at this time, reported index offenses are still down 16%. Standard bookings increased as did ALS, which increased by 1.3 days. The MCSO reported 26 matrix releases in August (avg.<1/day), which is the lowest reported matrix release since December 2003.

District Attorney: Adult Caseload



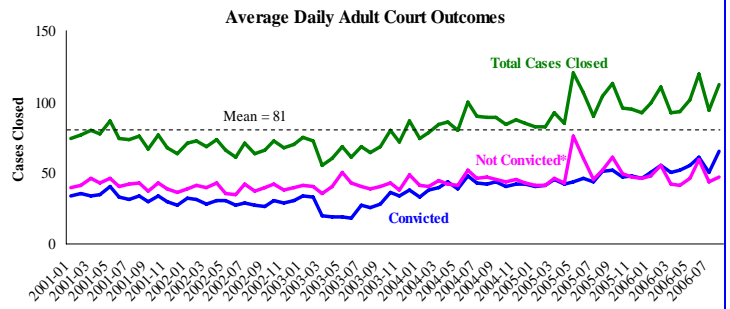
*Data retrieved 9-21-06. Note: Many recently received cases are pending review.

Average Daily Received Cases*: August (n=92)



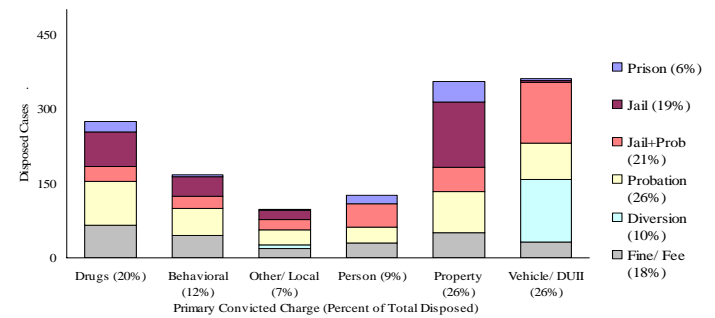
*August had 2,863 received cases as of 9-25-06 (92/day). Of those, 501 cases were pending review.

Court Processes: Sentencing Outcomes



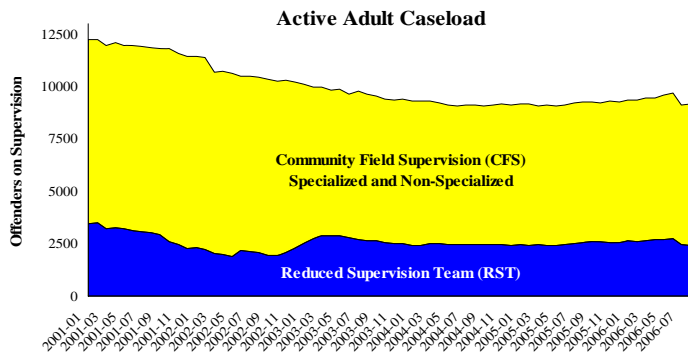
*Includes dismissed cases (typically 'no complainant') and cases found not guilty. Adult felony and misdemeanor cases only.

Disposition Type by Primary Conviction*: August 2006

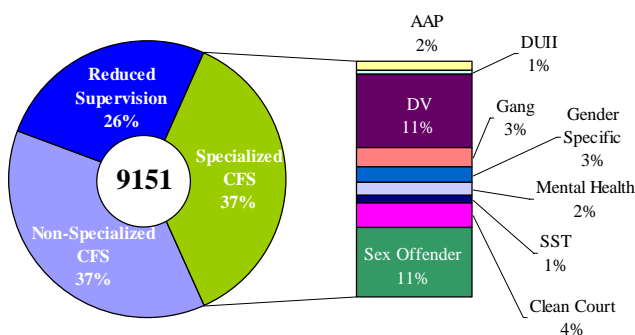


*Sentenced adult felony and misdemeanors primary convictions only. Primary conviction charge is the most serious charge with a conviction and may differ from the original primary charge. August had 2,025 convictions; 23% were felonies.

Adult Community Supervision: Caseloads

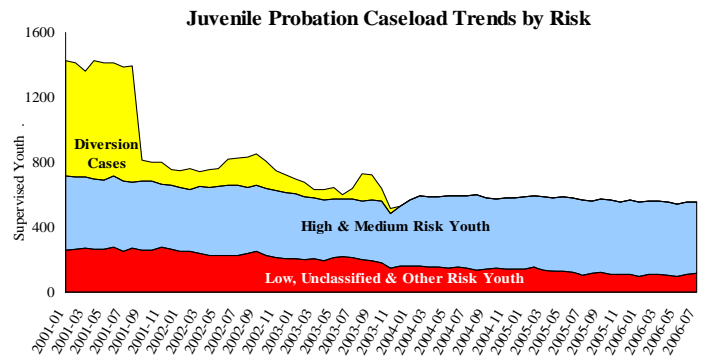


Adult Active Caseload by Type*: August 2006

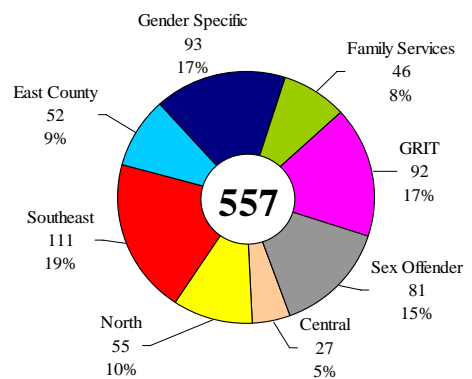


*Less than 1% are "other" cases which have been included as non-specialized.

Juvenile Community Supervision: Caseloads



Juvenile Justice Caseload by Unit*: July 2006



*The average caseload per counselor was 23.6 cases for July.

Notes: The DA's average daily adult caseload received increased 22% from July. This increase was driven primarily by misdemeanor charges in *Property* and *Behavioral* categories. The active adult caseload remained relatively stable after a 6% overall decrease last month. Juvenile justice caseloads remain largely unchanged.