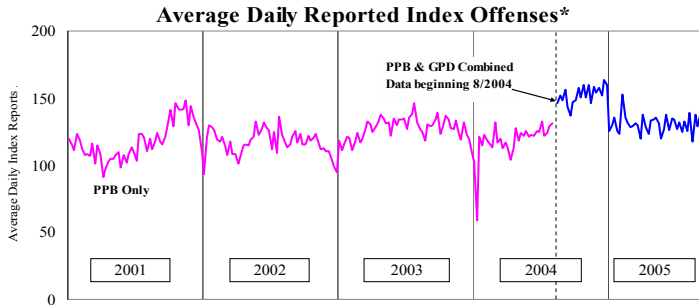


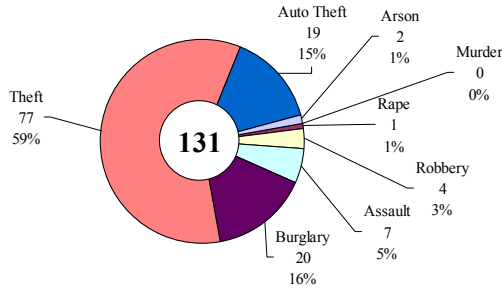
SAFETY PRIORITY BRIEF: AUGUST 2005

Multnomah County: Reported Index Offenses



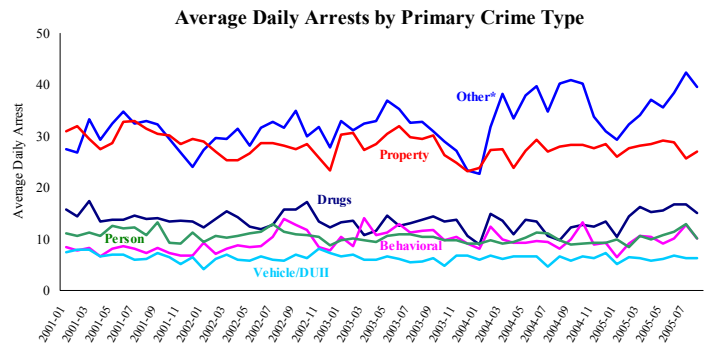
*The graph reflects the combined weekly index offenses data from Portland Police Bureau (PPB) and Gresham Police Dept (GPD), beginning 8/2004 (line in blue). According to LEDS (2005) data PPB and GPD account for 95% of all offenses county-wide. Index offenses account for about half of all reported offenses.

Average Daily Reported Index Offenses*



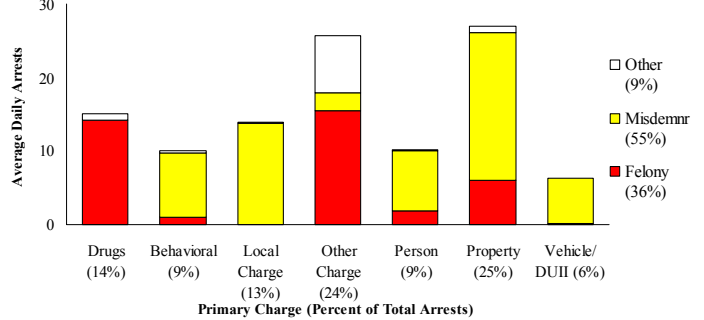
*Portland and Gresham, combined 4-week moving average for the week ending 8-27-05.

Multnomah County: Portland Arrests



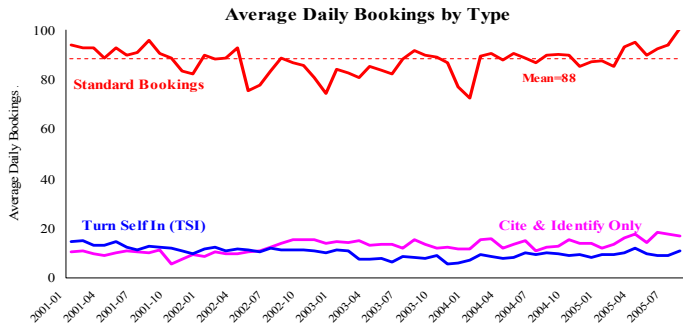
*Other largely reflects fugitive/warrant charges and local ordinances (DFZ/PFZ). PPB data only, downloaded 9-12-2005.

Average Daily Arrests*: August (n=108)



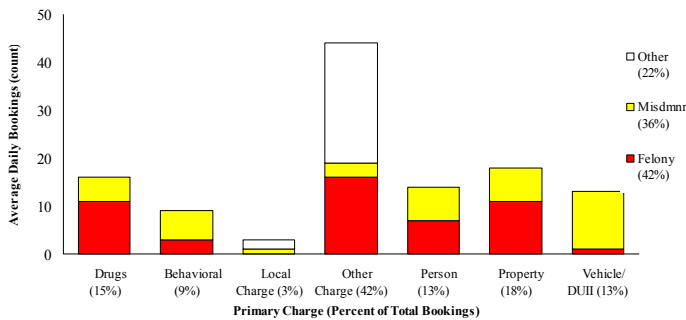
*There were 3,353 arrests in August. Local Charges include drug-free and prostitution free zone violations.

Sheriff: Bookings



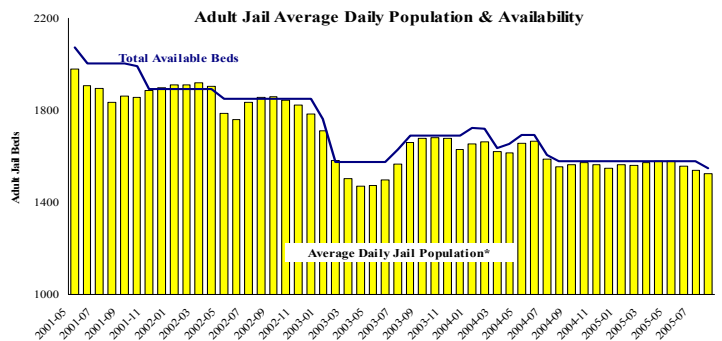
*In-transit bookings are not reported herein and account for ~4% of all bookings. August's average length of stay (ALS) per booking was 15.0 days.

Average Daily Bookings by Severity*: August (n=116)

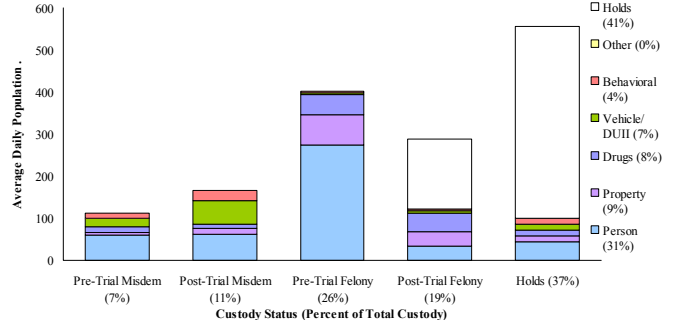


*Excludes Cite & ID. August had 3585 bookings (116/day). Corrections Health reported 614 psych-alerts (19.8/day).

Sheriff: Custody- Adult Jail Beds



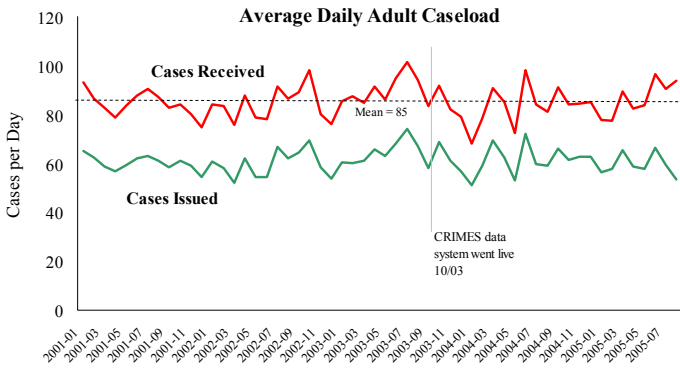
Average Daily Bed Use: August (n=1524)



Average daily jail system capacity=1548. Average Daily Population (ADP)=1524; there were 24 available beds on any given day.

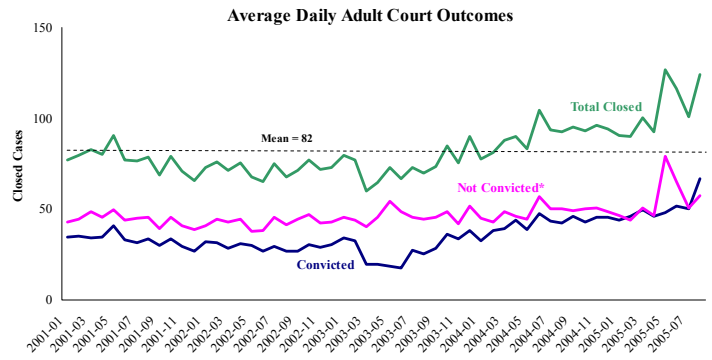
Notes: Average Daily Reported Offenses declined slightly due to decreases in Portland (*Auto Theft, Agg. Assault*). Average Daily Arrests declined with decreases in nearly all categories except *Property*. Average Daily Bookings increased substantially for all charge types except misdemeanor-level *Person* and *Local* offenses. The Average Daily Jail Capacity declined to 1548 on the mid-August closure of 60 beds at MWRC. This resulted in increased matrix releases (541) to the second highest level in two years (avg. 17.5/day). The Average Length of Stay (ALS) remained basically unchanged from July's at 15 days.

District Attorney: Adult Caseload



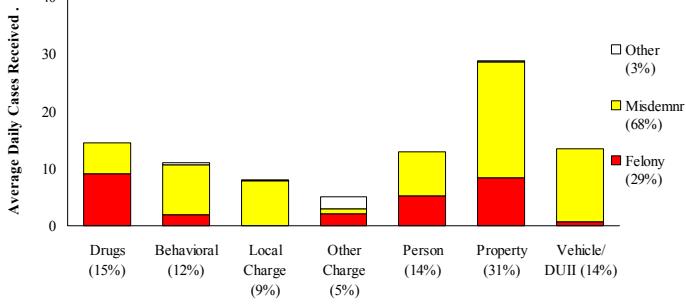
*Data retrieved 9-20-05. Note: Many recently received cases are pending review.

Court Processes: Sentencing Outcomes



*Includes dismissed cases (typically no complainant) and cases found not guilty. Adult felony and misdemeanor cases only.

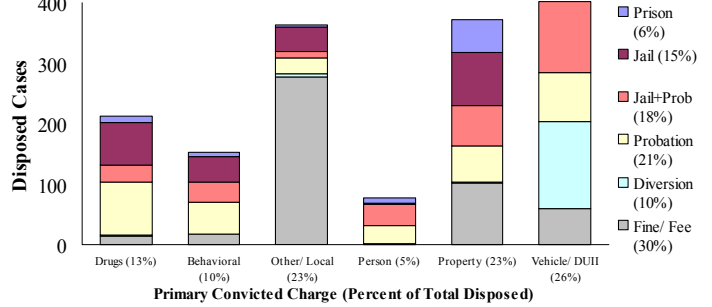
Average Daily Received Cases*: August (n=94)



Primary Charge (Percent of Total Cases Received)

*August had 2,906 received cases as of 9-20-05 (94/day). Of those, 688 cases were pending review.

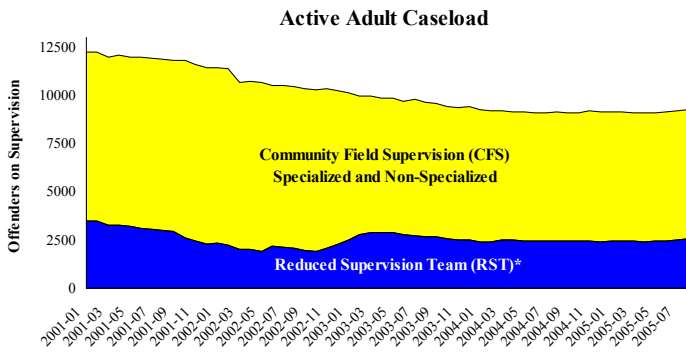
Disposition Type by Primary Conviction*: August 2005



Primary Convicted Charge (Percent of Total Disposed)

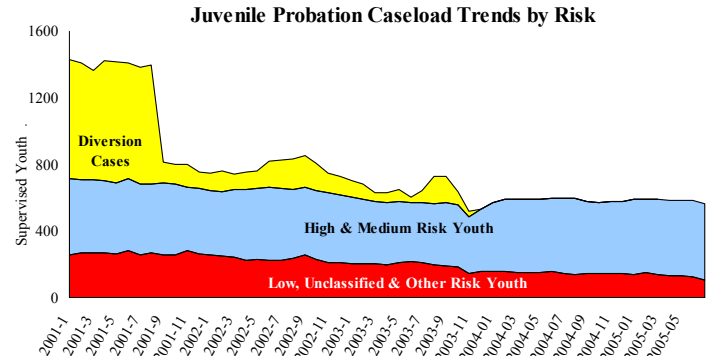
*Sentenced adult felony and misdemeanors primary convictions only. Primary conviction charge is the most serious charge with a conviction and may differ from the original primary charge. August had 2,064 convictions; 25% were felonies.

Adult Community Supervision: Caseloads

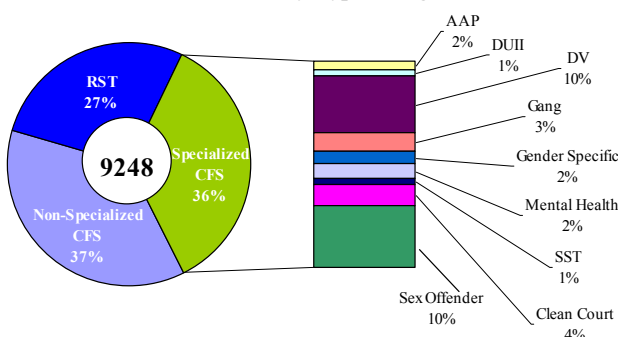


*Reduced Supervision Team (RST) formerly Casebank.

Juvenile Community Supervision: Caseloads

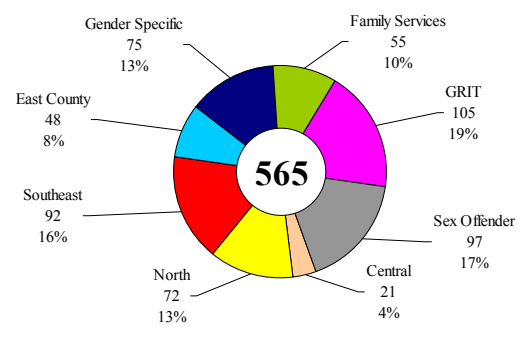


Adult Active Caseload by Type*: August 2005



*Less than 1% are "other" cases which have been included as non-specialized.

Juvenile Justice Caseload by Unit: July 2005



Average caseload per counselor was 24 cases for July.

Notes. The DA Adult Cases Received increased due to a large increase in *Property* and *Vehicle Offenses*, despite decreases in all other categories. The Adult Supervision increased, mainly due to increases in RST caseloads. The Juvenile Justice caseload declined due to decreases in medium- and low-risk caseloads for July.