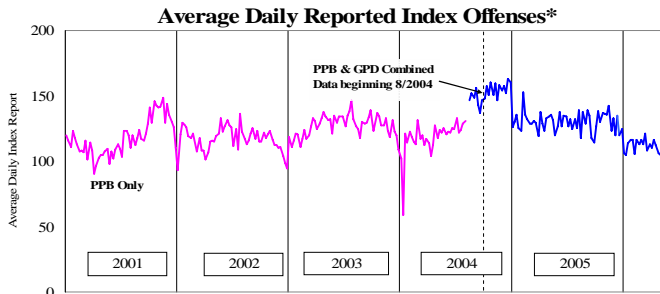


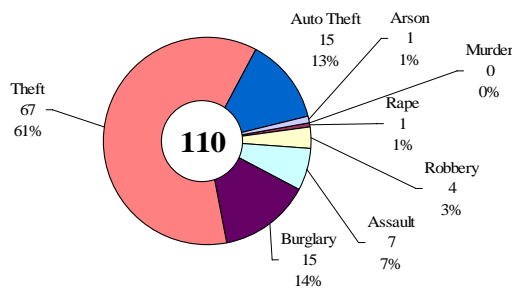
SAFETY PRIORITY BRIEF: APRIL 2006

Multnomah County: Reported Index Offenses



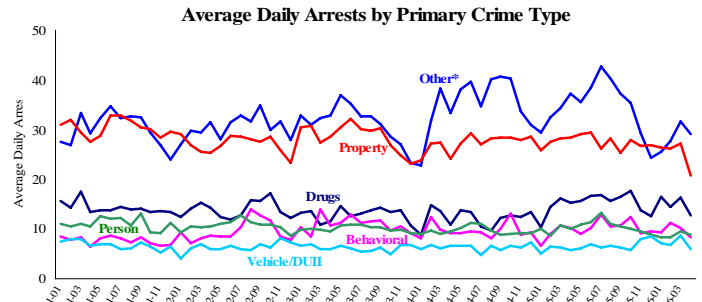
*The graph reflects the combined weekly index offenses data from Portland Police Bureau (PPB) and Gresham Police Dept (GPD), beginning 8/2004 (line in blue). According to LEADS (2005) data PPB and GPD account for 95% of all offenses county-wide. Index offenses account for about half of all reported offenses.

Average Daily Reported Index Offenses*



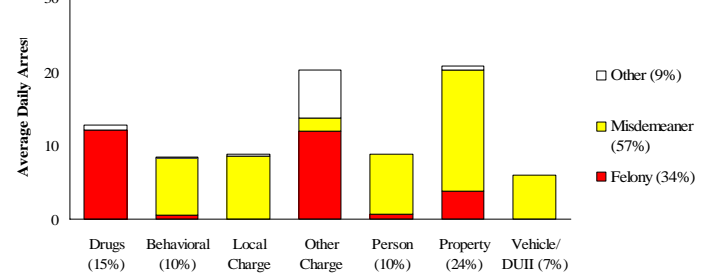
*Portland and Gresham, combined 4-week moving average for the week ending 4-22-06.

Multnomah County: Portland Arrests



*Other largely reflects fugitive/warrant charges and local ordinances (DFZ/PFZ). PPB data only, downloaded 5-17-2006.

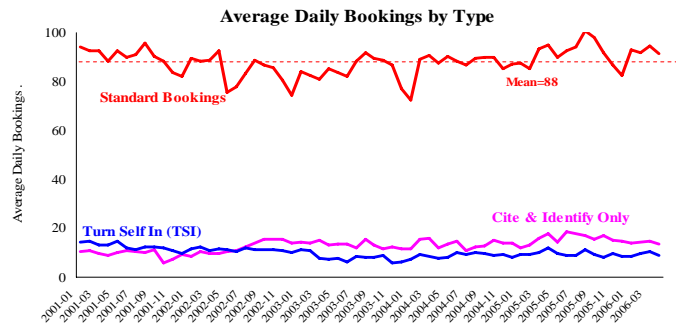
Average Daily Arrests*: April (n=86)



Primary Charge (Percent of Total Arrests)

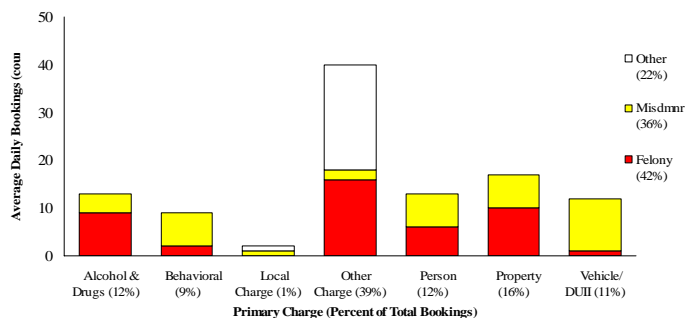
*There were 2,568 arrests in April. Local Charges include drug-free and prostitution free zone violations.

Sheriff: Bookings



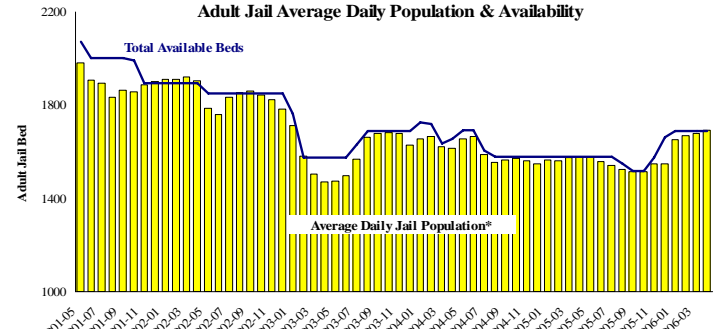
*In-transit bookings are not reported herein and account for ~4% of all bookings. April's average length of stay (ALS) per booking was 17.5 days.

Average Daily Bookings by Severity*: April (n=104)



*Excludes Cite & ID. April had 3,106 bookings (104/day).

Sheriff: Custody- Adult Jail Beds

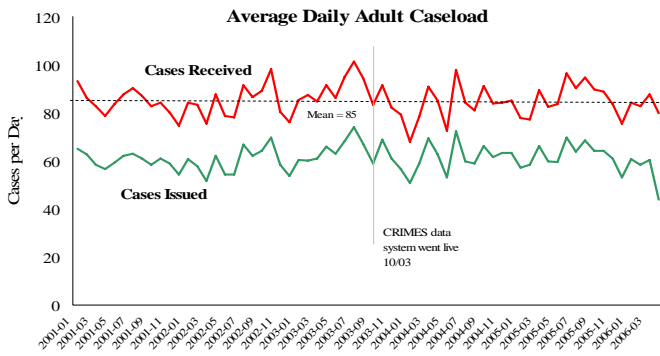


*Excludes in-transit custody classifications. The MCSO reported 309 matrix releases for April 2006 (10.3/day).

Average Daily Bed Use Data Unavailable for April 2006 (Accessed 6/1/06)

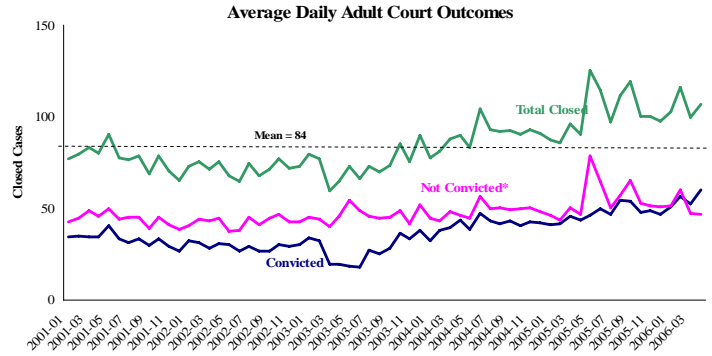
Notes: Reported index offenses continued their decline and are 16% lower compared to this time last year (PPB). Average daily arrests decreased 16% with the largest decreases in *Drug*, *Property*, and *Other* charges. Standard bookings decreased 7% from last month with booking on *Other* charges representing the largest proportion. The MCSO reported 309 matrix releases in April (avg. 10.3/day) while the average length of stay (ALS) remained the same as previous months (17.5 days per booking). April's overall jail utilization was 100%, exceeding the average daily bed capacity by two.

District Attorney: Adult Caseload



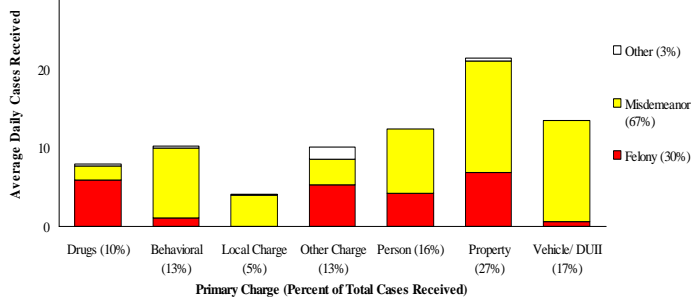
*Data retrieved 5-24-06. Note: Many recently received cases are pending review.

Court Processes: Sentencing Outcomes



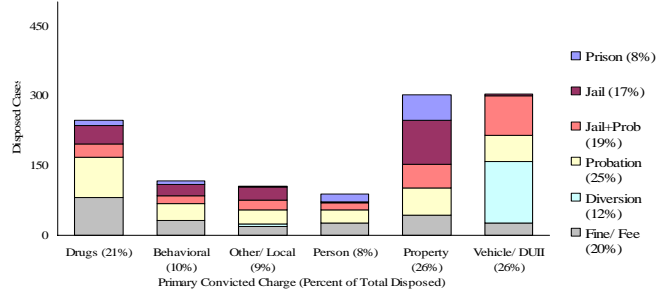
*Includes dismissed cases (typically no complainant) and cases found not guilty. Adult felony and misdemeanor cases only.

Average Daily Received Cases*: April (n=80)



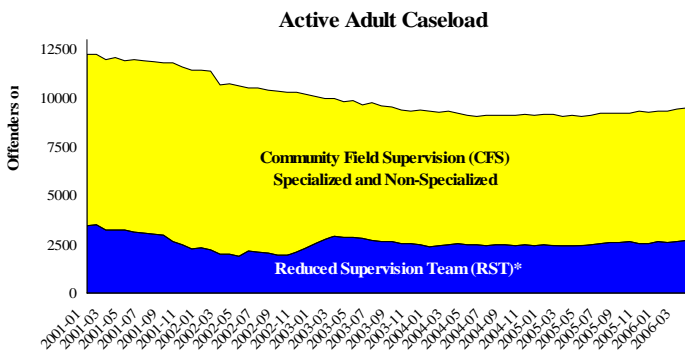
*April had 2,395 received cases as of 5-24-06 (80/day). Of those, 601 cases were pending review.

Disposition Type by Primary Conviction*: April 2006



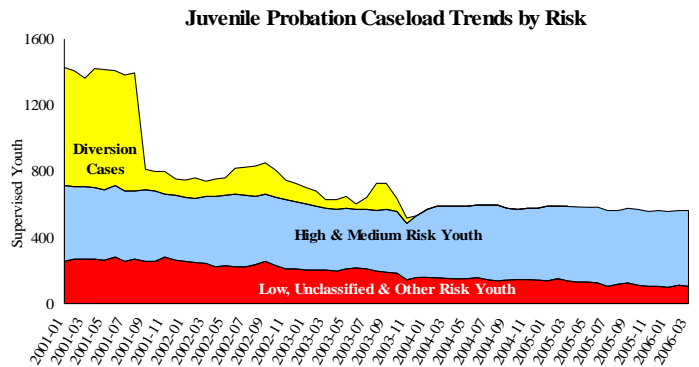
*Sentenced adult felony and misdemeanors primary convictions only. Primary conviction charge is the most serious charge with a conviction and may differ from the original primary charge. April had 1,805 convictions; 30% were felonies.

Adult Community Supervision: Caseloads

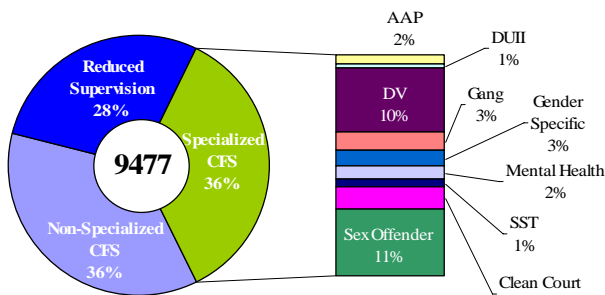


*Reduced Supervision Team (RST) formerly Casebank.

Juvenile Community Supervision: Caseloads

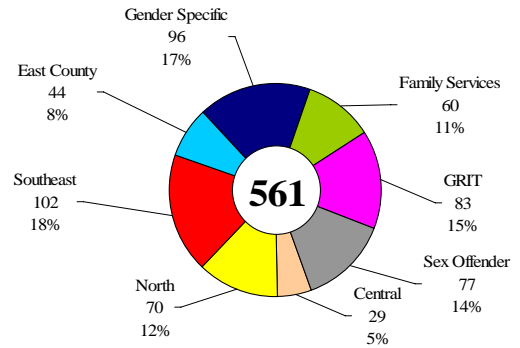


Adult Active Caseload by Type*: April 2006



*Less than 1% are "other" cases which have been included as non-specialized.

Juvenile Justice Caseload by Unit: March 2006



Average caseload per counselor was 22.3 cases for March.

Notes: The DA adult cases decreased 12%; increases in *Drug* and *Local* charges were tempered by decreases in *Property* and *Other* charges. Average daily sentencing outcomes increased 8% from March. The Adult community supervision total caseload continues its gradual increase, while juvenile caseload remained unchanged.