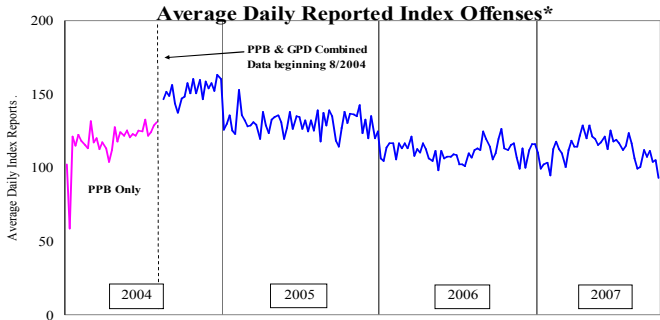


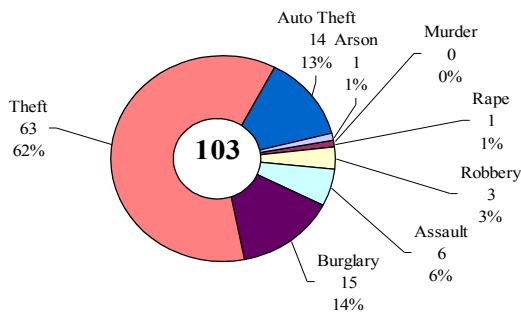
SAFETY PRIORITY BRIEF: SEPTEMBER 2007

Multnomah County: Reported Index Offenses



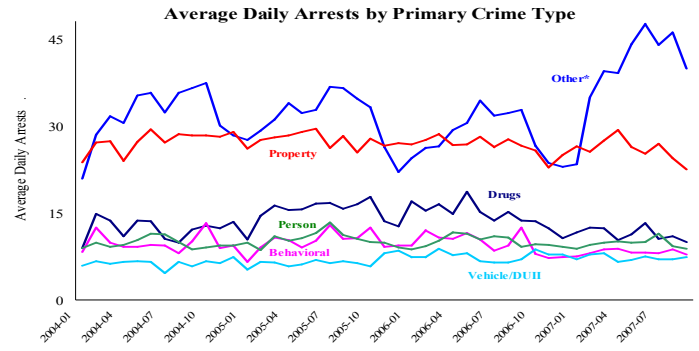
*The graph reflects the combined weekly index offenses data from Portland Police Bureau (PPB) and Gresham Police Dept (GPD), beginning 8/2004 (line in blue). According to LEDS (2005) data PPB and GPD account for 95% of all offenses county-wide. Index offenses account for about half of all reported offenses.

Average Daily Reported Index Offenses*



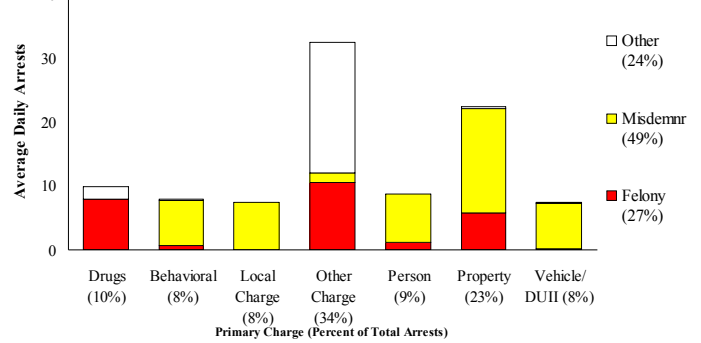
*Portland and Gresham, combined 4-week moving average for the week ending 9-29-07.

Multnomah County: Portland Arrests



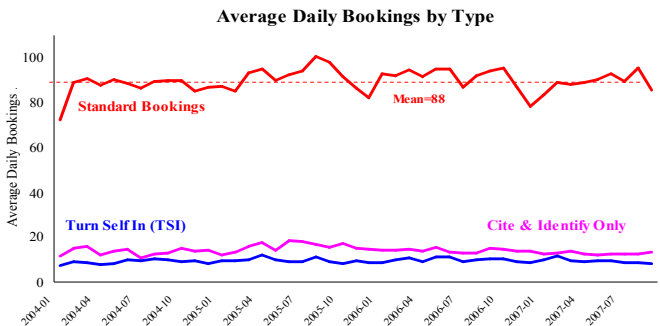
*Other largely reflects fugitive/warrant charges and local ordinances (DFZ/PFZ). PPB data only, downloaded 10/17/07.

Average Daily Arrests*: September (n=96)



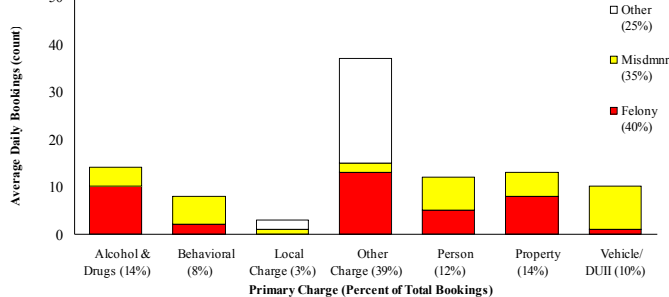
*There were 2886 arrests in September. Local Charges include drug-free and prostitution free zone violations.

Sheriff: Bookings



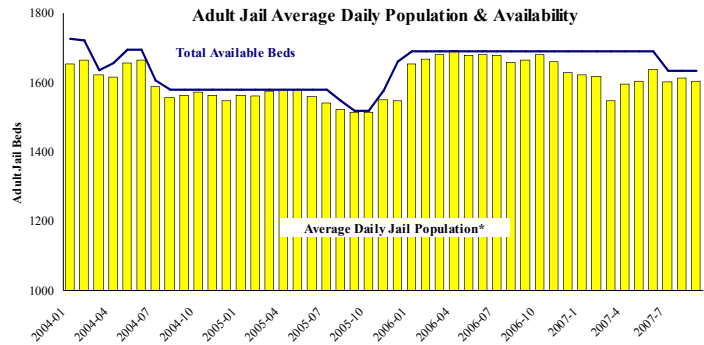
*In-transit bookings are not reported herein and account for ~4% of all bookings. September's average length of stay (ALS) per booking was 17.1 days.

Average Daily Bookings by Severity*: September (n=97)



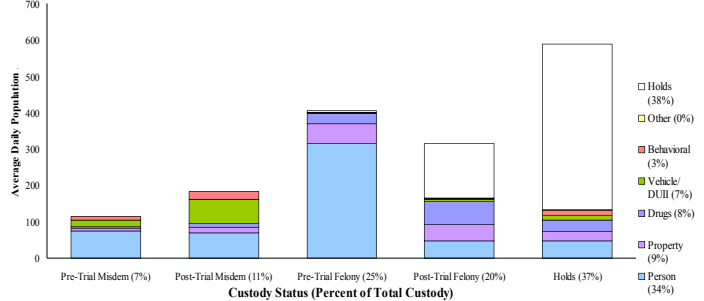
*Excludes Cite & ID. Total of 2909 bookings (97/day) through 9/30/07. Corrections Health reported 508 psych-alerts (16.9/day) for the entire month of September.

Sheriff: Custody- Adult Jail Beds



*Excludes in-transit custody classifications. The MCSO reported 85 matrix releases for September 2007 (2.8/day).

Average Daily Bed Use: September (n=1605)



Average Daily Jail System Capacity=1633. Average Daily Population (ADP)=1605; there were 28 available beds on any given day.

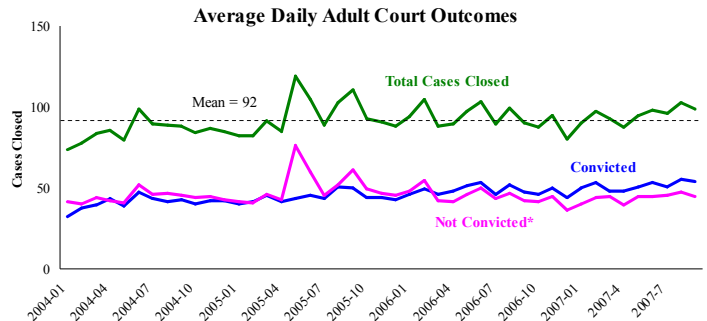
Notes: Reported offenses have declined considerably since their April peak (124/day) due mostly to reduction in the *theft* and *auto theft* categories. The Average Daily Bookings declined substantially due to decreases in *local*, *vehicle*, and *property* offenses. Standard Booking is at its lowest level since January averaging 86 per day. This decrease is driven by decreases in the *Property*, *Alcohol*, and *Other* charge categories.

District Attorney: Adult Caseload

DSSJ Data Not Available

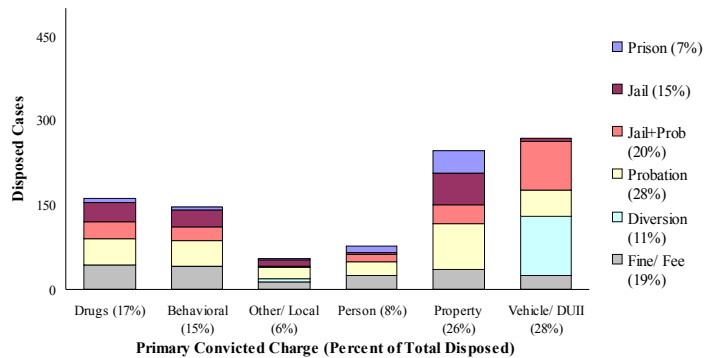
DSSJ Data Not Available

Court Processes: Sentencing Outcomes



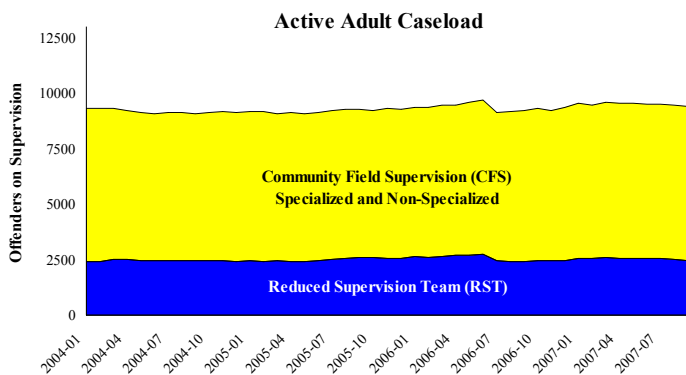
*Includes dismissed cases (typically 'no complainant') and cases found not guilty. Adult felony and misdemeanor cases only.

Disposition Type by Primary Conviction*: September 2007

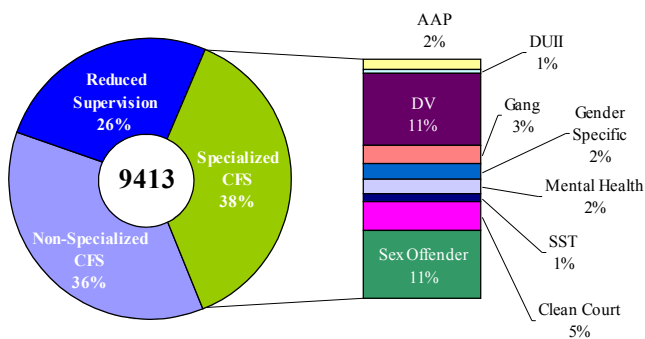


*Sentenced adult felony and misdemeanors primary convictions only. Primary conviction charge is the most serious charge with a conviction and may differ from the original primary charge. September had 1,618 convictions; 22% were felonies.

Adult Community Supervision: Caseloads

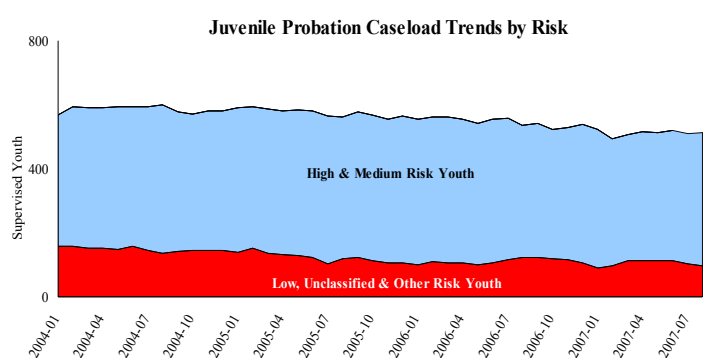


Adult Active Caseload by Type*: September 2007

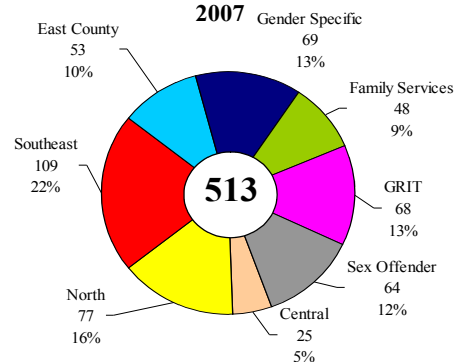


*Less than 1% are "other" cases which have been included as non-specialized.

Juvenile Community Supervision: Caseloads



Juvenile Justice Caseload by Unit*: September 2007



*The average caseload per counselor was 23.4 cases for September.

Notes: District Attorney Caseload data is currently unavailable. The remaining three categories remain stable for September.