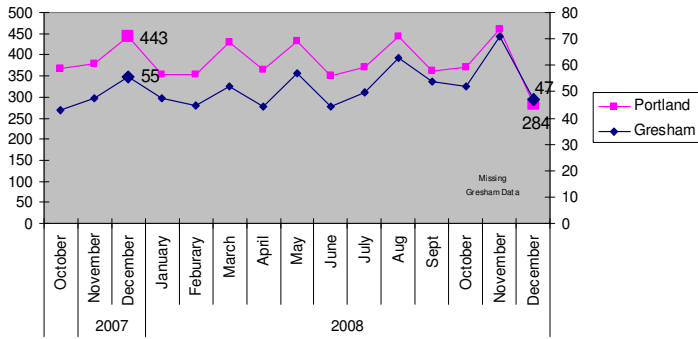


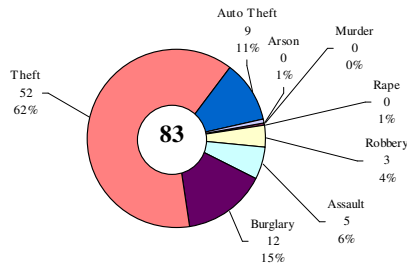
# SAFETY PRIORITY BRIEF: DECEMBER 2008

## Multnomah County: Reported Index Offenses

Previous 15 Month Totals of Daily Crime by City (Highlighting December Months)



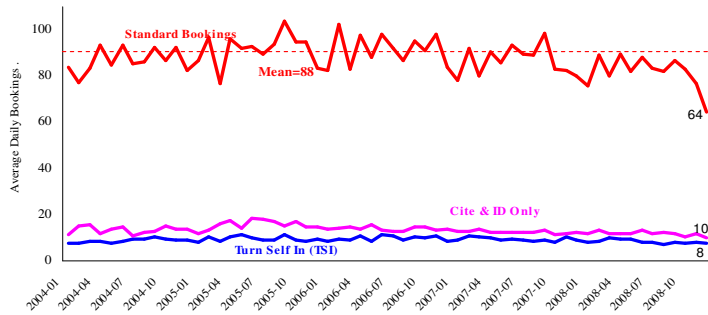
Average Daily Reported Index Offenses\*



\*Portland and Gresham, combined 4-week moving average for the week ending 12-31-08.

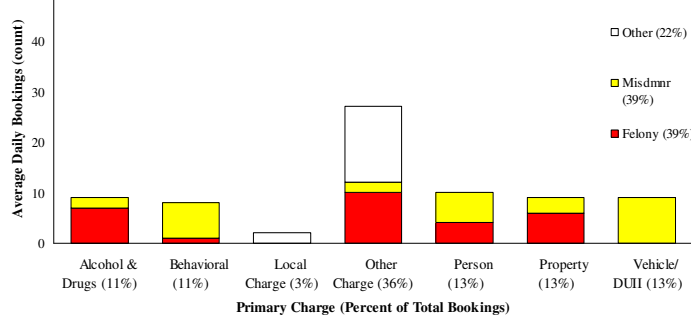
## Sheriff: Bookings

Average Daily Bookings by Type



\*In-transit bookinists are not reported herein and account for ~4% of all bookings. December's average length of stay (ALS) per booking was 17.6 days.

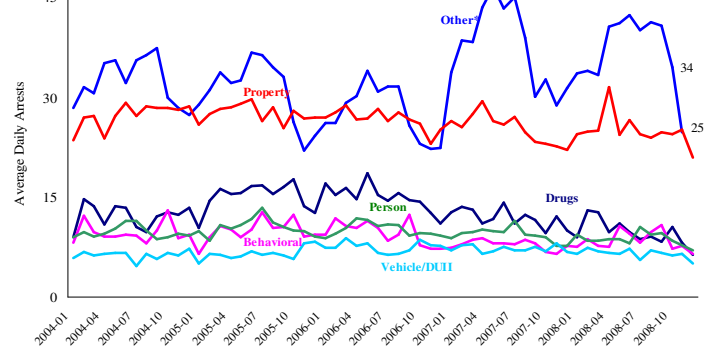
Average Daily Bookings by Severity\*: December (n=74)



\*Excludes Cite & ID. Total of 2307 bookings (74.4/day) through 12/31/2008. Corrections Health reported 428 psych-arrests (13.8/day) for the entire month of December.

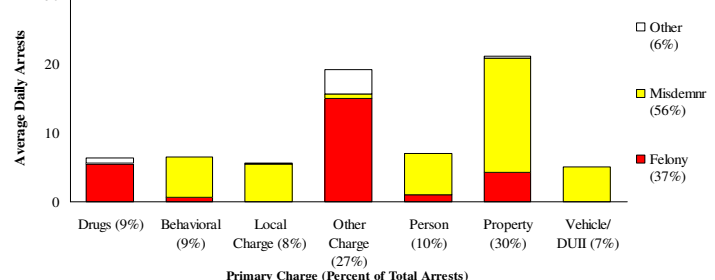
## Multnomah County: Portland Arrests

Average Daily Arrests by Primary Crime Type



\*Other largely reflects fugitive/warrant charges and local ordinances (DFZ/PFZ). PPB data only, downloaded 01/20/2009.

Average Daily Arrests\*: December (n=71)



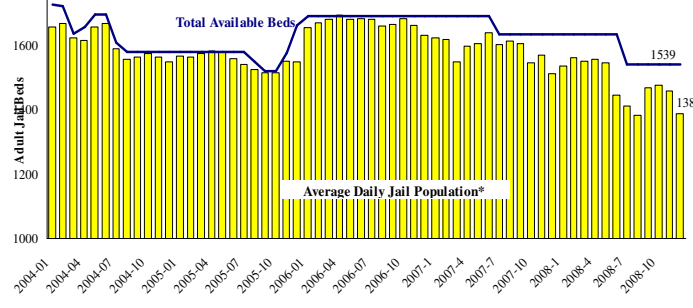
Local charges include drug- and prostitution-free zone violations.

\*There were 2192 arrests in December.

From now on, warrants previously categorized as 'other' will be listed under felony arrests.

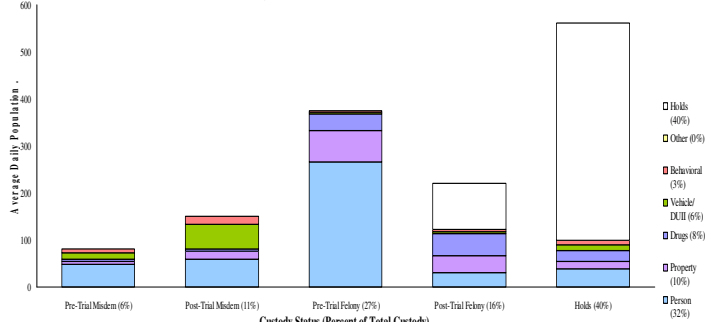
## Sheriff: Custody- Adult Jail Beds

Adult Jail Average Daily Population & Availability



\*Excludes in-transit custody classifications. The MCSO reported 0 matrix releases for December 2008.

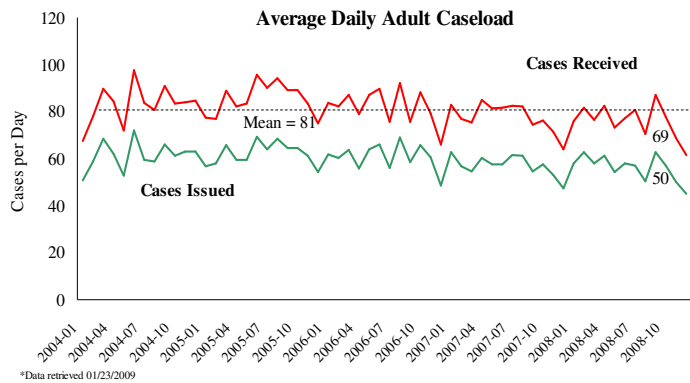
Average Daily Bed Use: December (n=1388)



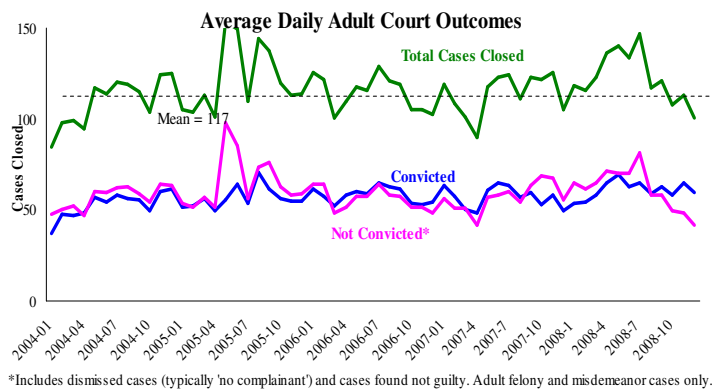
Average Daily Jail System Capacity=1539. Average Daily Population (ADP)=1388; there were 151 available beds on any given day.

**Notes:** Average Daily Arrests decreased 20% with decreases in Drug Arrests of 25% and Other Charges 26%. Average Length of Stay (ALS) for December was 17.6 days, declining for the first time since September. Also, the number of jail beds occupied dropped again for the third month in a row, for a total drop of 6% since a high of 1,474 in October. There were 1,999 Total Sheriff Standard Bookings for the month of December which was the lowest amount recorded since data analysis started in 2004. This was a decrease of 11% from last month, including a 17% drop in Standard Booking and Cite and ID. Gresham Offenses data is missing from the last four weeks.

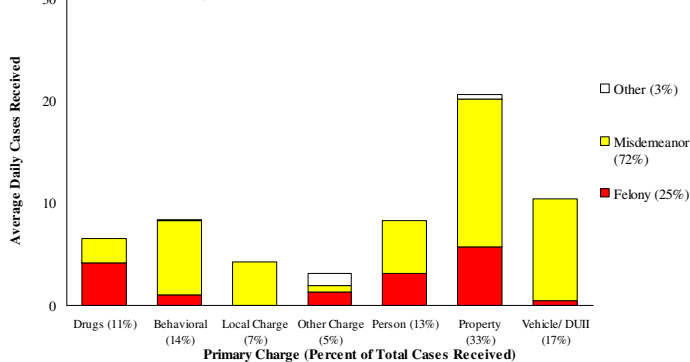
## District Attorney: Adult Caseload



## Court Processes: Sentencing Outcomes

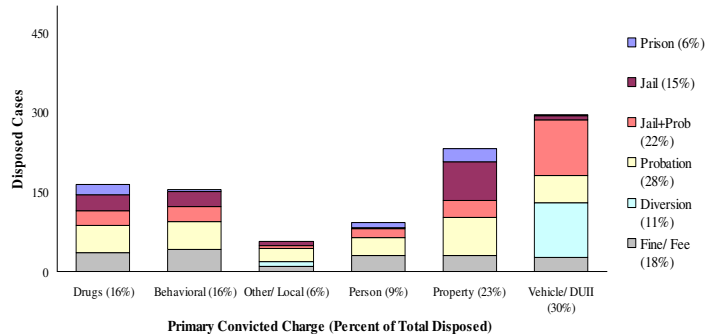


### Average Daily Received Cases\*: December (n=62)



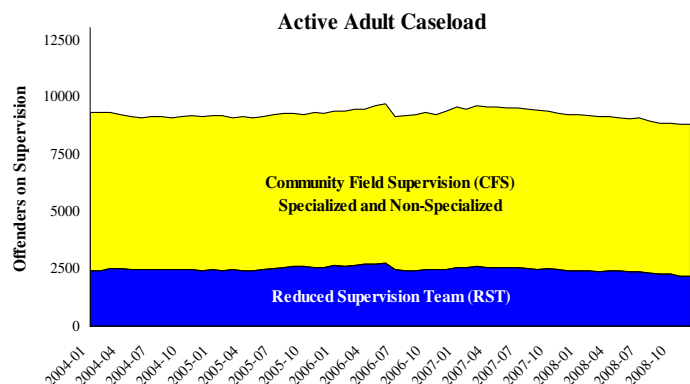
\*December had 1911 received cases as of 12/31/2008 (61.6/day). 1657 cases were resolved in December.

### Disposition Type by Primary Conviction\*: December 2008

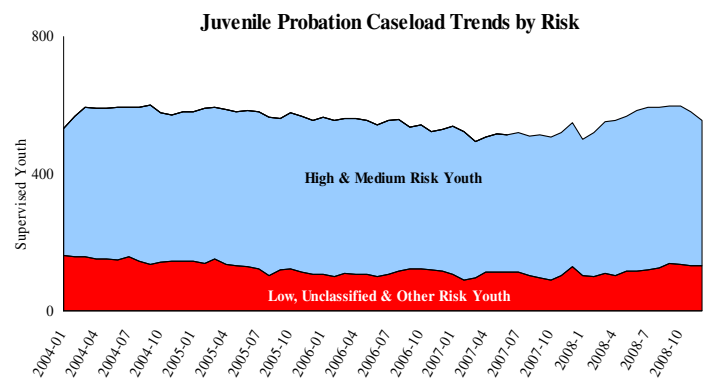


\*Sentenced adult felony and misdemeanors primary convictions only. Primary conviction charge is the most serious charge with a conviction and may differ from the original primary charge. December had 1599 convictions; 19% were felonies.

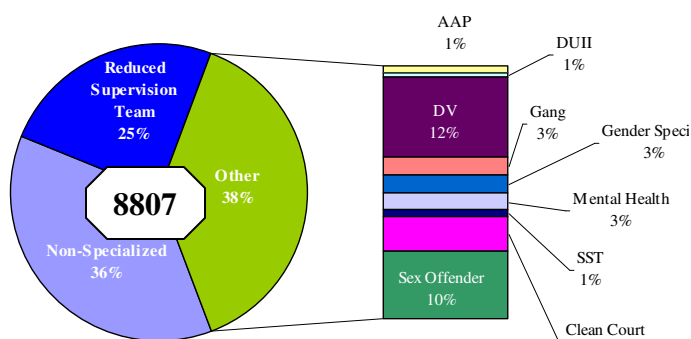
## Adult Community Supervision: Caseloads



## Juvenile Community Supervision: Caseloads

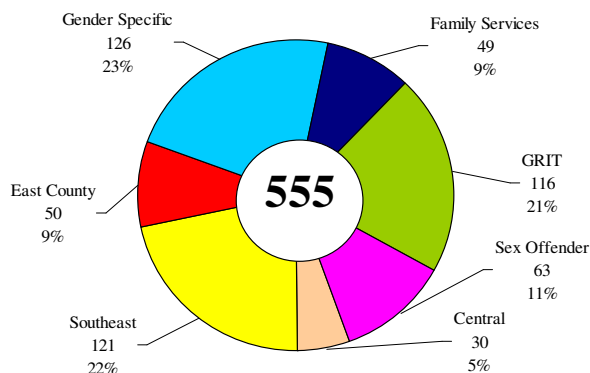


### Adult Active Caseload by Type\*: December 2008



\*Less than 1% are "other" cases which have been included as non-specialized.

### Juvenile Justice Caseload by Unit\*: December 2008



\*The average caseload per counselor was 25.1 cases for December

**Notes:** Cases Received and Cases Issued declined for the fourth month in a row, and the percent convicted as well (59%). Adult Active Caseload dropped to 8,807, continuing the decline of the past three months. Also, Juvenile Justice Caseload by Unit continued the same decline, dropping to a total of 555. This result dropped the average caseload per counselor to 25.1. CFS and RST Adult Caseloads have reached their lowest total since February 2008.