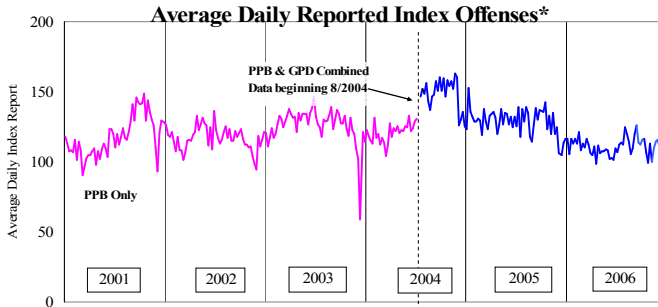


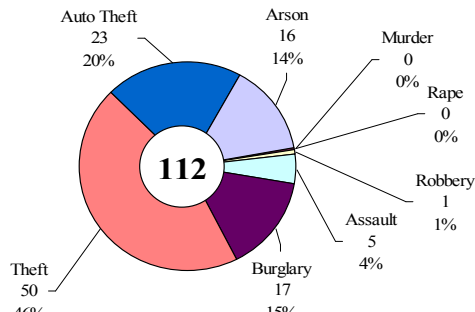
SAFETY PRIORITY BRIEF: DECEMBER 2006

Multnomah County: Reported Index Offenses



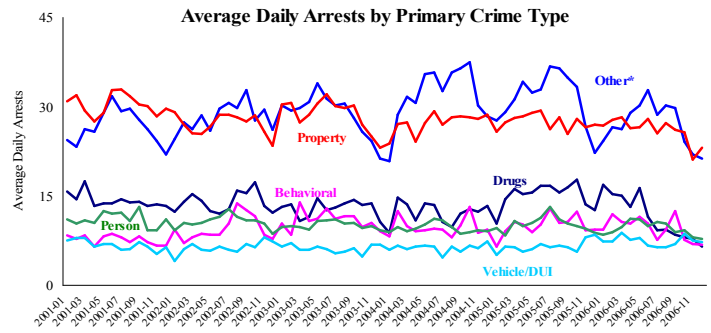
*The graph reflects the combined weekly index offenses data from Portland Police Bureau (PPB) and Gresham Police Dept (GPD), beginning 8/2004 (line in blue). According to LEDS (2005) data PPB and GPD account for 95% of all offenses county-wide. Index offenses account for about half of all reported offenses.

Average Daily Reported Index Offenses*



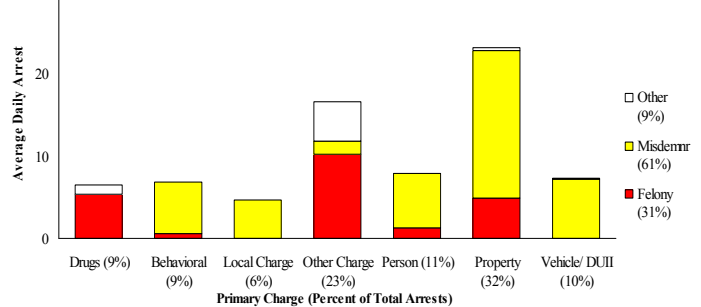
*Portland and Gresham, combined 4-week moving average for the week ending 12-23-06.

Multnomah County: Portland Arrests



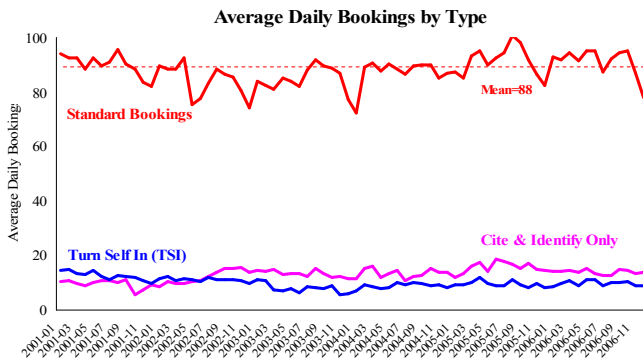
*Other largely reflects fugitive/warrant charges and local ordinances (DFZ/PFZ). PPB data only, downloaded 1-17-2007.

Average Daily Arrests*: December (n=73)



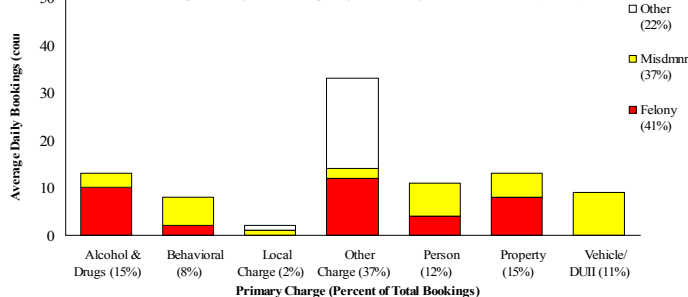
*There were 2,260 arrests in December. Local Charges include drug-free and prostitution free zone violations.

Sheriff: Bookings



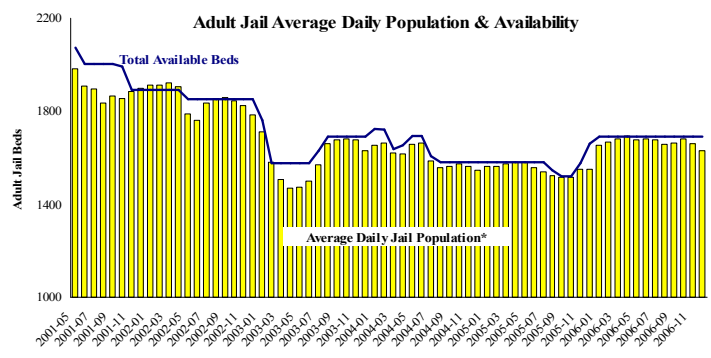
*In-transit bookings are not reported herein and account for ~4% of all bookings. December's average length of stay (ALS) per booking was 18.91 days.

Average Daily Bookings by Severity*: December (n=90)



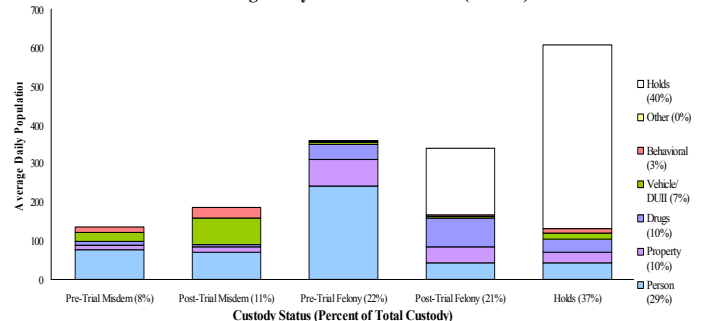
*Excludes Cite & ID. Total of 2783 bookings (90/day) through 12/31/06. Corrections Health reported 468 psych-alerts (16.3/day) for the entire month of December.

Sheriff: Custody- Adult Jail Beds



*Excludes in-transit custody classifications. The MCSO reported 18 matrix releases for December 2006 (58/day).

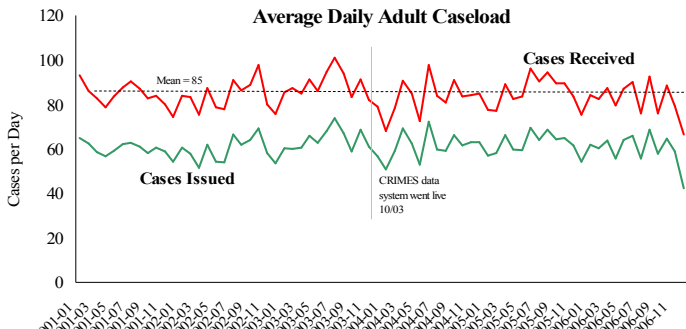
Average Daily Bed Use: December (n=1629)



Average Daily Jail System Capacity=1690. Average Daily Population (ADP)=1629; there were 67 available beds on any given day.

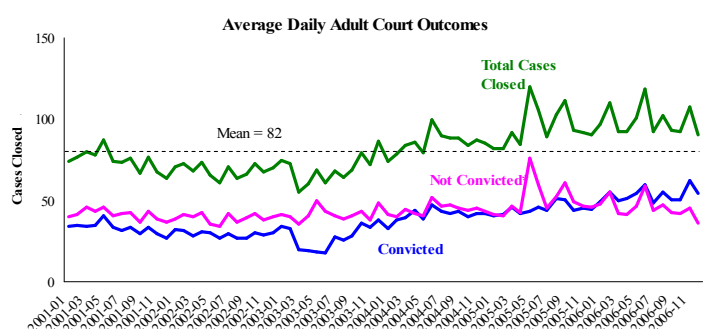
Notes: December showed a 7.7% decrease in Standard bookings along with Cite and Identify bookings. The number of Turn Self In bookings continued to increase. The MCSO reported 18 matrix releases in December (avg. <1 /day). There are historically fewer matrix releases in December. The Average Length of Stay (ALS) increased by 1 day to 18.9 days per booking. There were 61 beds available on any given day in December.

District Attorney: Adult Caseload



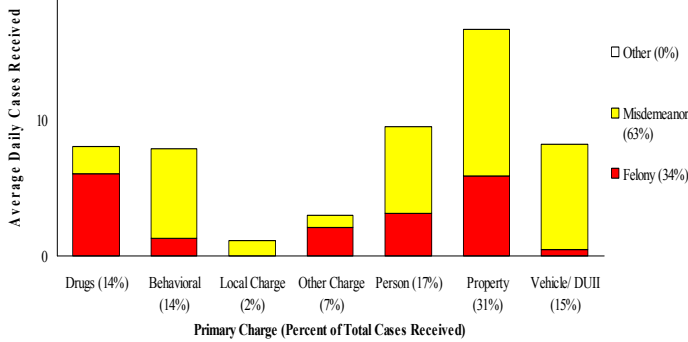
*Data retrieved 1/17/2007 Note: Many recently received cases are pending review.

Court Processes: Sentencing Outcomes



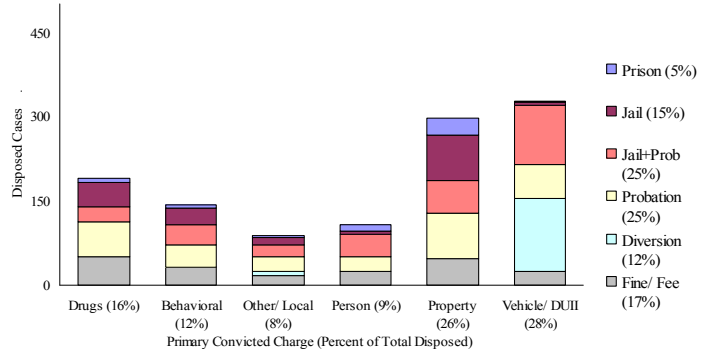
*Includes dismissed cases (typically 'no complainant') and cases found not guilty. Adult felony and misdemeanor cases only.

Average Daily Received Cases*: December (n=56)



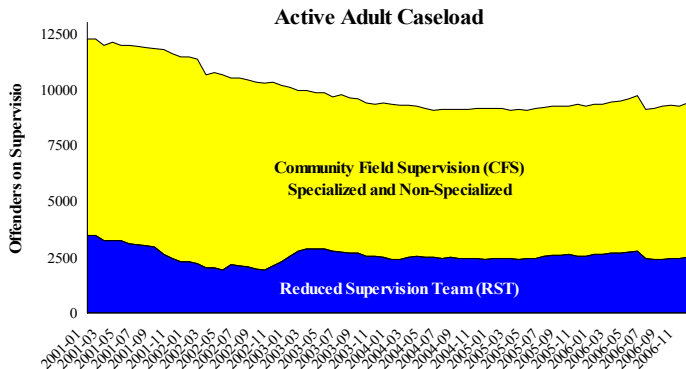
*December had 1736 received cases as of 1-17-2007 (56/day). Of those, no cases were pending review.

Disposition Type by Primary Conviction*: December 2006

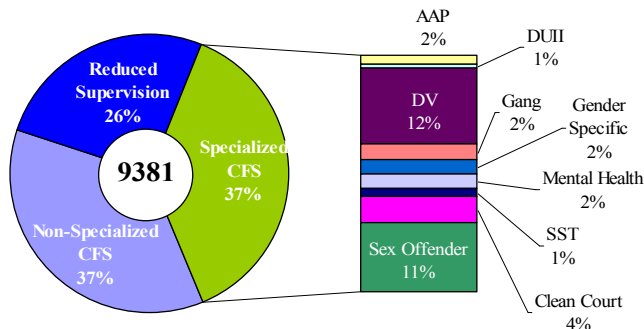


*Sentenced adult felony and misdemeanors primary convictions only. Primary conviction charge is the most serious charge with a conviction and may differ from the original primary charge. December had 1,683 convictions; 22% were felonies.

Adult Community Supervision: Caseloads

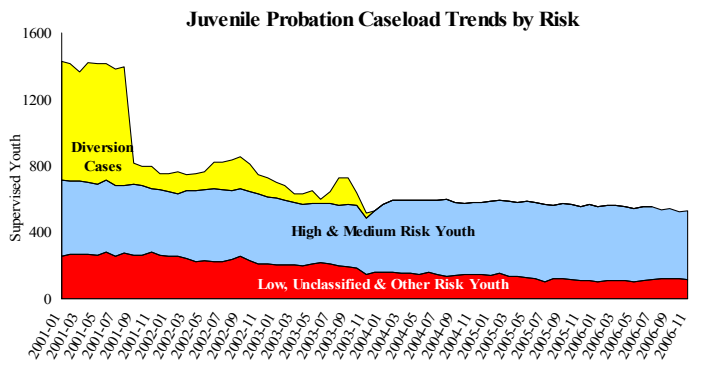


Adult Active Caseload by Type*: December 2006

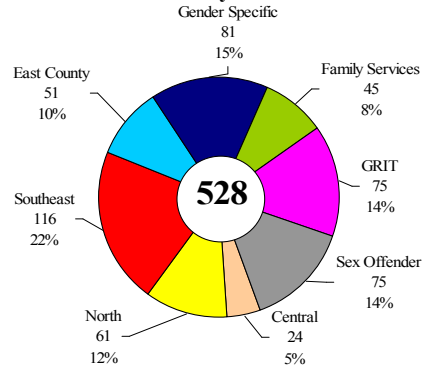


*Less than 1% are "other" cases which have been included as non-specialized.

Juvenile Community Supervision: Caseloads



Juvenile Justice Caseload by Unit*: November 2006



*The average caseload per counselor was 23.1 cases for November.

Notes: The DA Adult Cases Received continued to decline; December declined in all offense categories. The Adult Supervision caseload decreased in December due to drops in the *Specialized* and *Reduced Supervision Team (RST)* caseloads. Juvenile Justice Caseload increased slightly due to an increase *High-Medium* caseloads.