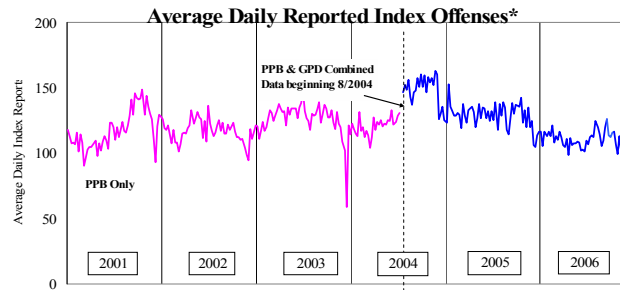


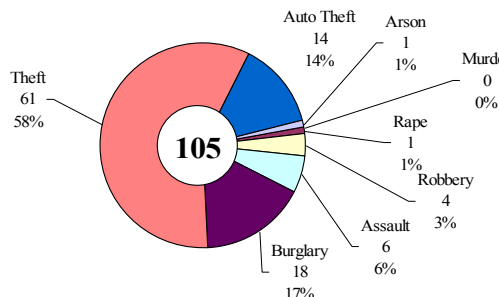
SAFETY PRIORITY BRIEF: NOVEMBER 2006

Multnomah County: Reported Index Offenses



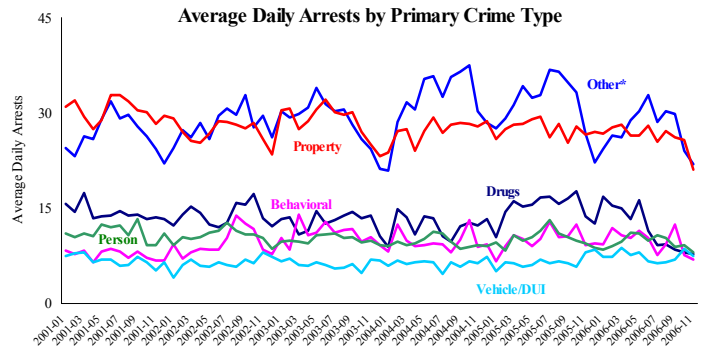
*The graph reflects the combined weekly index offenses data from Portland Police Bureau (PPB) and Gresham Police Dept (GPD), beginning 8/2004 (line in blue). According to LEDS (2005) data PPB and GPD account for 95% of all offenses county-wide. Index offenses account for about half of all reported offenses.

Average Daily Reported Index Offenses*



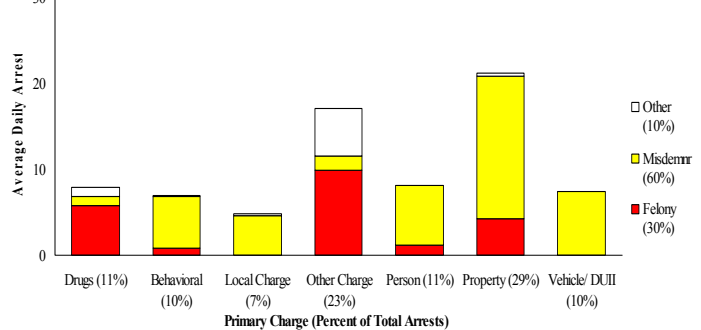
*Portland and Gresham, combined 4-week moving average for the week ending 11-25-06.

Multnomah County: Portland Arrests



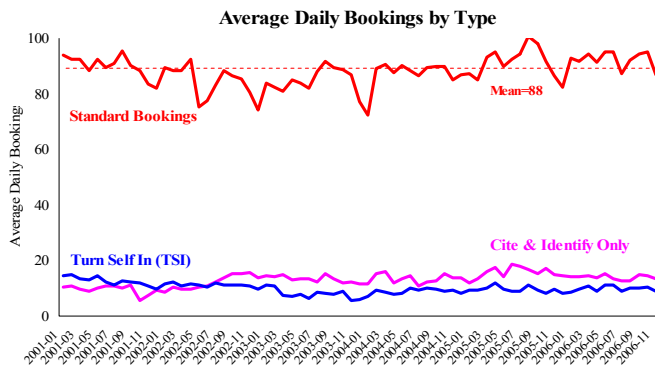
*Other largely reflects fugitive/warrant charges and local ordinances (DFZ/PFZ). PPB data only, downloaded 12-20-2006.

Average Daily Arrests*: November (n=74)



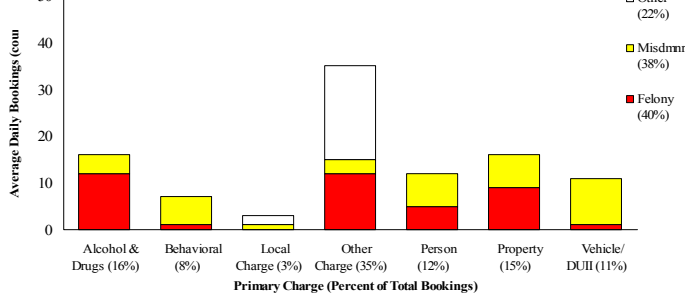
*There were 2,205 arrests in November. Local Charges include drug-free and prostitution free zone violations.

Sheriff: Bookings



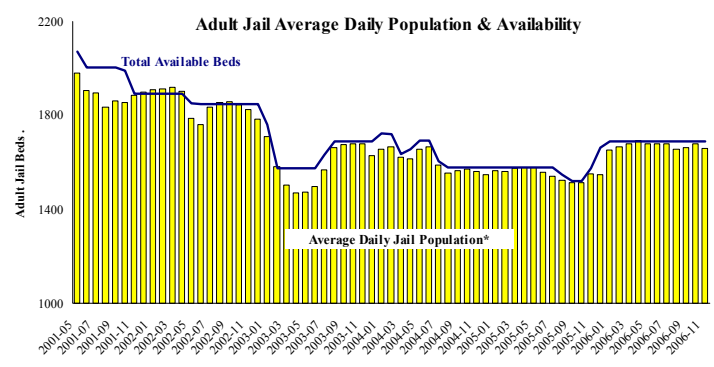
*In-transit bookings are not reported herein and account for ~4% of all bookings. November's average length of stay (ALS) per booking was 17.5 days.

Average Daily Bookings by Severity*: November (n=100)



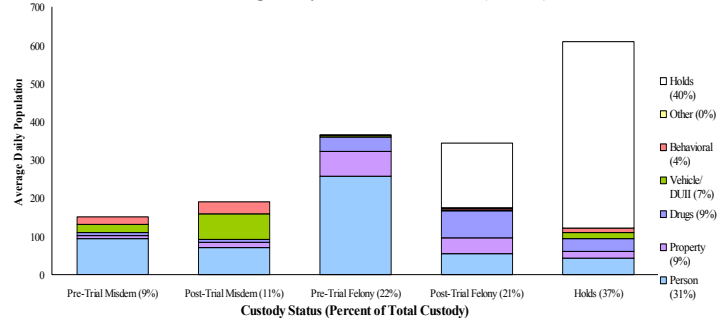
*Excludes Cite & ID. Total of 3001 bookings (100/day) through 11/30/06. Corrections Health reported 476 psych-alerts (15.9/day) for the entire month of November.

Sheriff: Custody- Adult Jail Beds



*Excludes in-transit custody classifications. The MCSO reported 227 matrix releases for November 2006 (7.6/day).

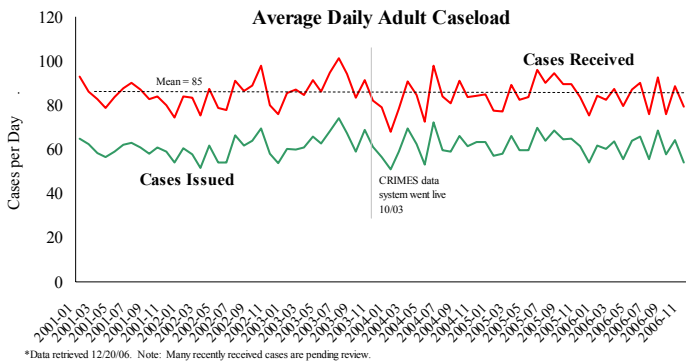
Average Daily Bed Use: November (n=1661)



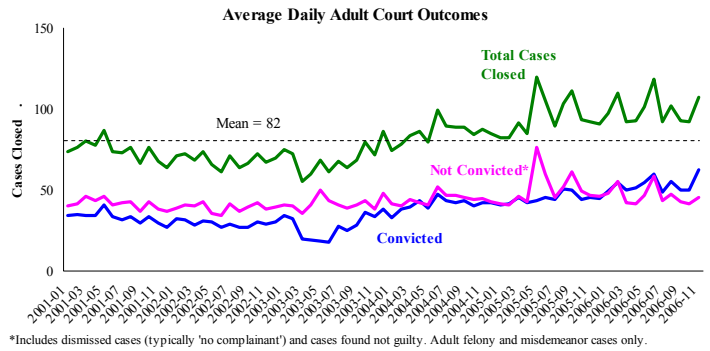
Average Daily Jail System Capacity=1690. Average Daily Population (ADP)=1661; there were 29 available beds on any given day.

Notes: Average daily arrests decreased by 12% from October to November continuing a monthly decrease since July. The MCSO reported 227 matrix releases in November (avg. 7.6/day). Psych alerts decreased from 559 in October to 476 in November. Overall jail utilization in November was 98.3%, leaving 29 beds available on any given day.

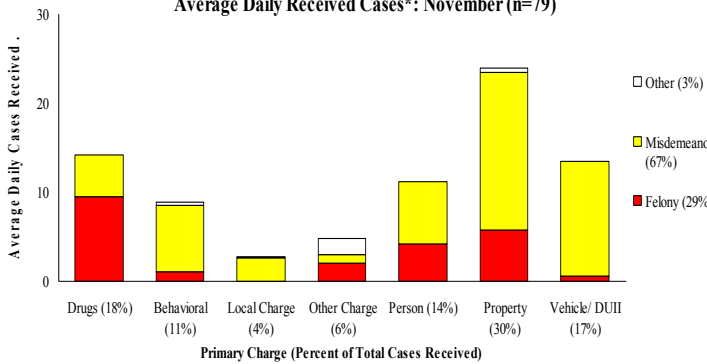
District Attorney: Adult Caseload



Court Processes: Sentencing Outcomes

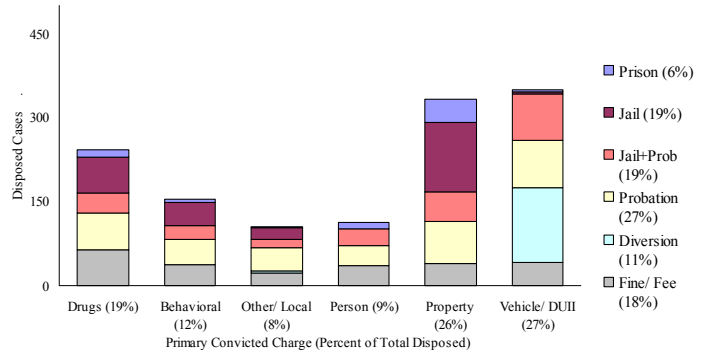


Average Daily Received Cases*: November (n=79)



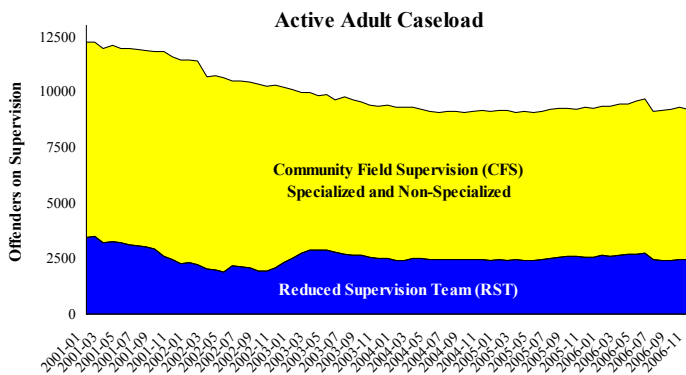
*November had 2,380 received cases as of 12-20-06 (79/day). Of those, 528 cases were pending review.

Disposition Type by Primary Conviction*: November 2006

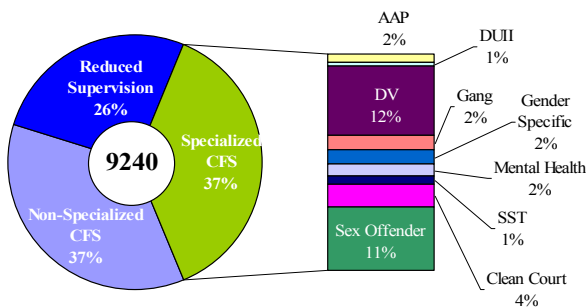


*Sentenced adult felony and misdemeanors primary convictions only. Primary conviction charge is the most serious charge with a conviction and may differ from the original primary charge. November had 1,867 convictions; 24% were felonies.

Adult Community Supervision: Caseloads

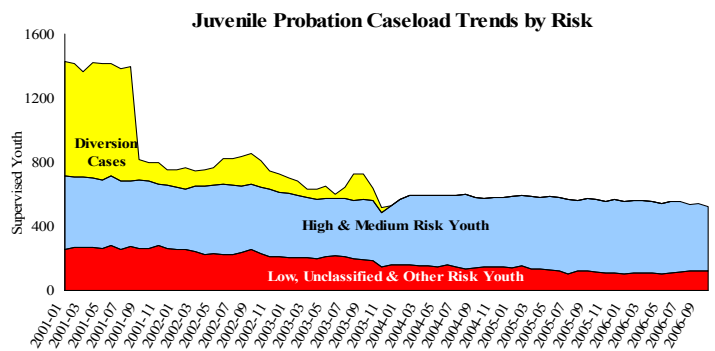


Adult Active Caseload by Type*: November 2006

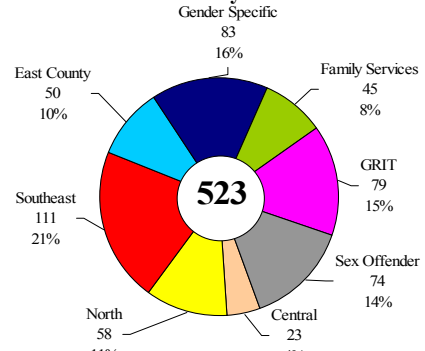


*Less than 1% are "other" cases which have been included as non-specialized.

Juvenile Community Supervision: Caseloads



Juvenile Justice Caseload by Unit*: October 2006



*The average caseload per counselor was 22.8 cases for October.

Notes: DA cases received declined from 89 per day in October to 79 per day in November. The active adult caseload decreased slightly in November.