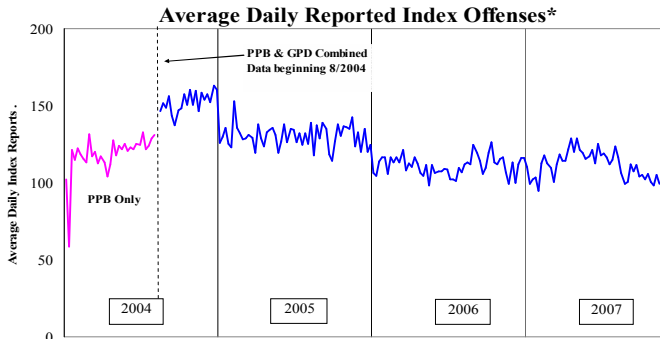


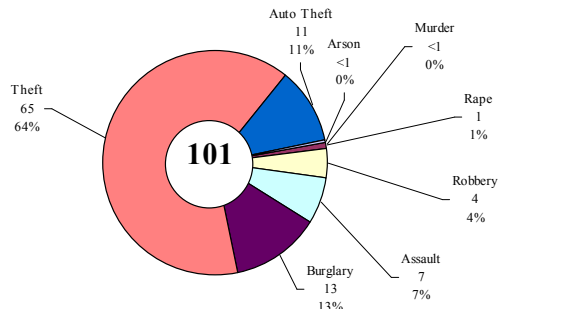
SAFETY PRIORITY BRIEF: OCTOBER 2007

Multnomah County: Reported Index Offenses



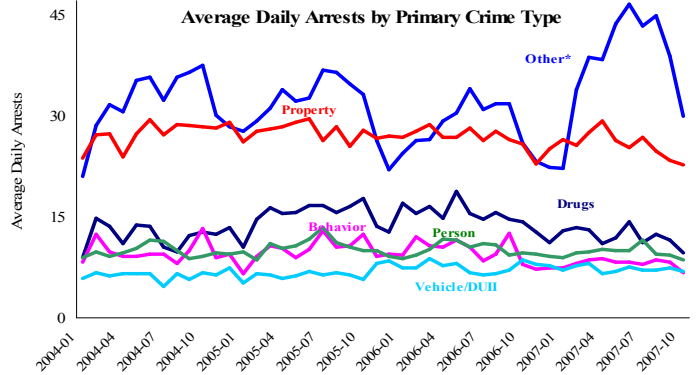
*The graph reflects the combined weekly index offenses data from Portland Police Bureau (PPB) and Gresham Police Dept (GPD), beginning 8/2004 (line in blue). According to LEADS (2005) data PPB and GPD account for 95% of all offenses county-wide. Index offenses account for about half of all reported offenses.

Average Daily Reported Index Offenses*



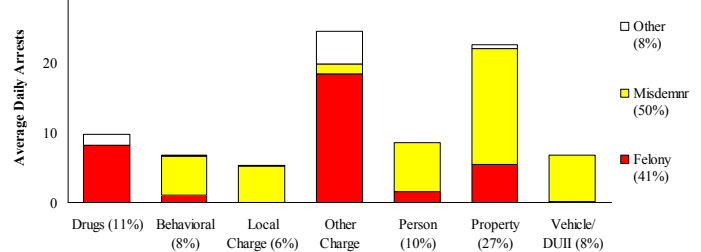
*Portland and Gresham, combined 4-week moving average for the week ending 11-3-07.

Multnomah County: Portland Arrests



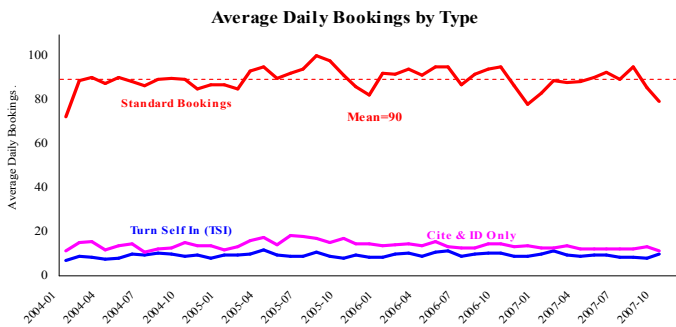
*Other largely reflects fugitive/warrant charges, and local ordinances (DFZ/PFZ). PPB data only, downloaded 11/30/07

Average Daily Arrests*: October (n=84)



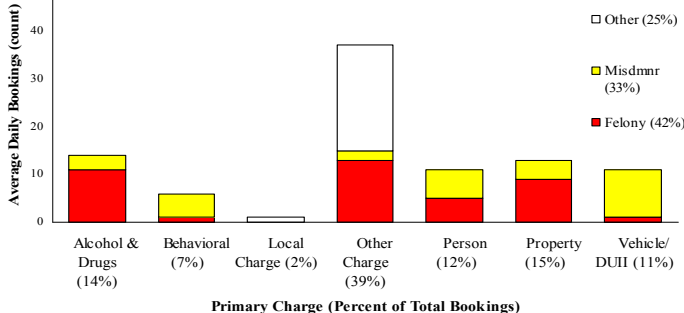
Local charges include drug- and prostitution-free zone violations. *There were 2612 arrests in October. From now on, warrants previously categorized as 'other' will be listed under felony arrests.

Sheriff: Bookings



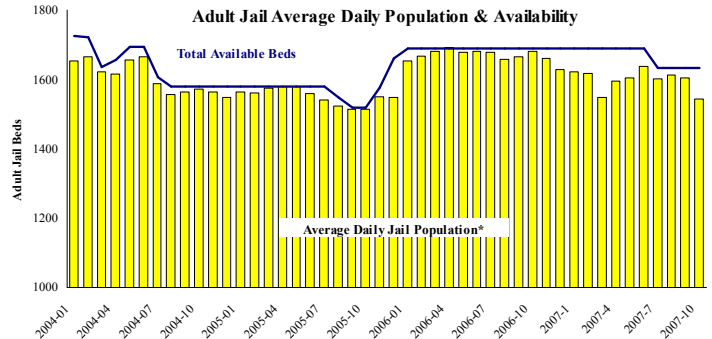
*In-transit bookings are not reported herein and account for ~4% of all bookings. October's average length of stay (ALS) per booking was 18.66 days

Average Daily Bookings by Severity*: October (n=94)



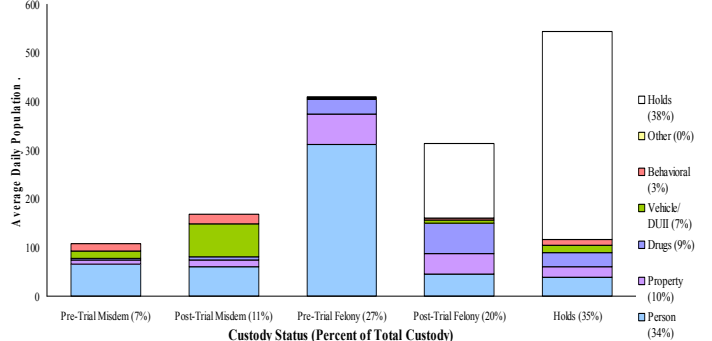
*Excludes Cite & ID. Total of 2902 bookings (93.6/day) through 10/31/07. Corrections Health reported 484 psych-alerts (15.6/day) for the entire month of October.

Sheriff: Custody- Adult Jail Beds



*Excludes in-transit custody classifications. The MCSO reported 0 matrix releases for October 2007.

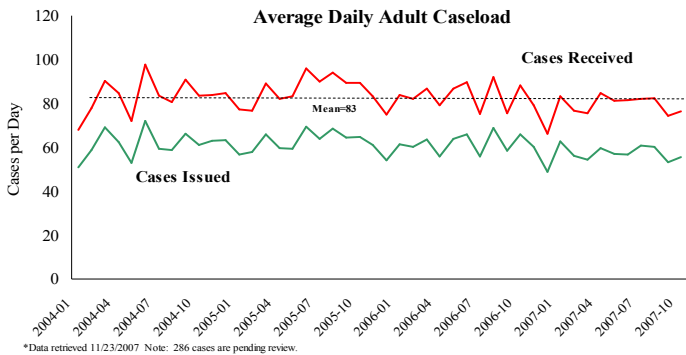
Average Daily Bed Use: October (n=1544)



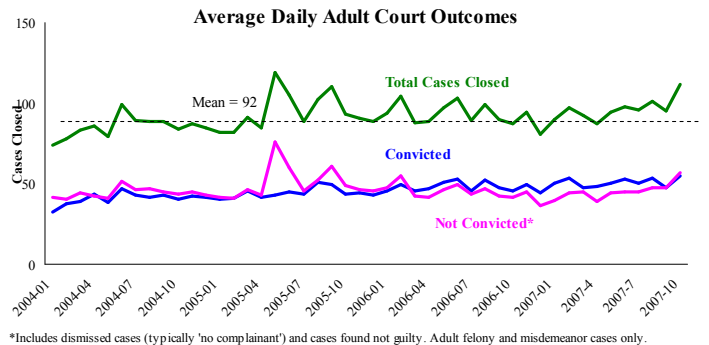
Average Daily Jail System Capacity=1633. Average Daily Population (ADP)=1544; there were 98 available beds on any given day.

Notes: Average Daily Reported Offenses have been steadily decreasing since the week ending 4/7/2007. This decrease has been driven mainly by a comparable decrease in "Property Crimes" and to a lesser extent "Larceny from Auto" and "Auto Theft" crimes. The decrease in jail bed use has been driven by a decrease in the "Hold/Other" category. This has resulted in a low jail bed utilization rate of 94.5%.

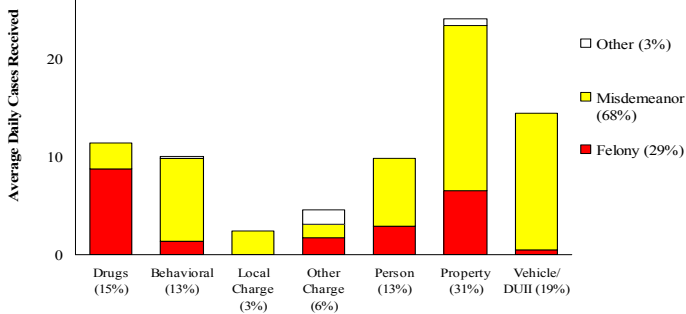
District Attorney: Adult Caseload



Court Processes: Sentencing Outcomes

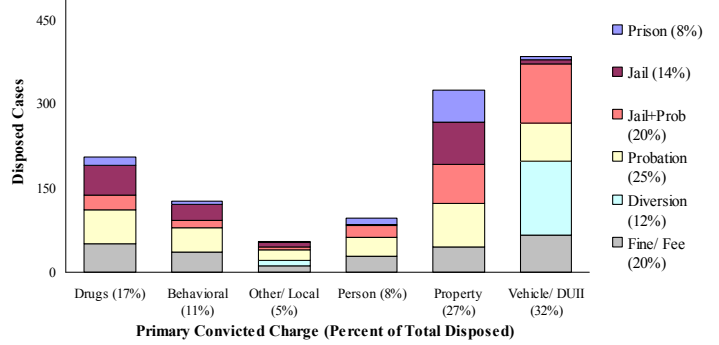


Average Daily Received Cases*: October (n=76)



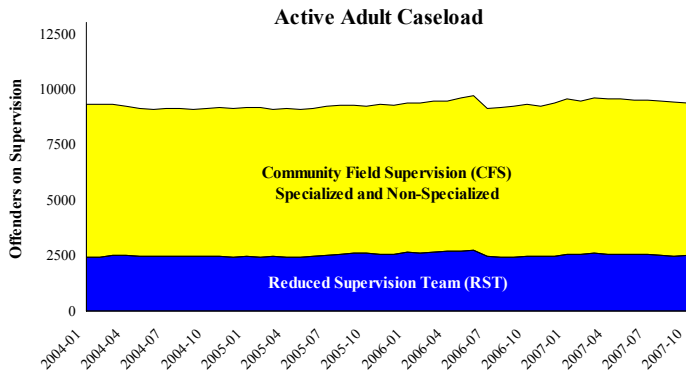
*October had 2369 received cases as of 10-31-2007 (76.4/day). Of those, 286 cases were pending

Disposition Type by Primary Conviction*: October 2007

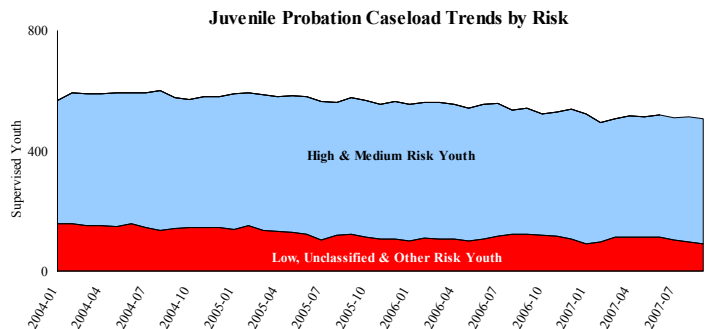


*Sentenced adult felony and misdemeanor primary convictions only. Primary conviction charge is the most serious charge with a conviction and may differ from the original primary charge. September had 1,704 convictions; 26% were felonies.

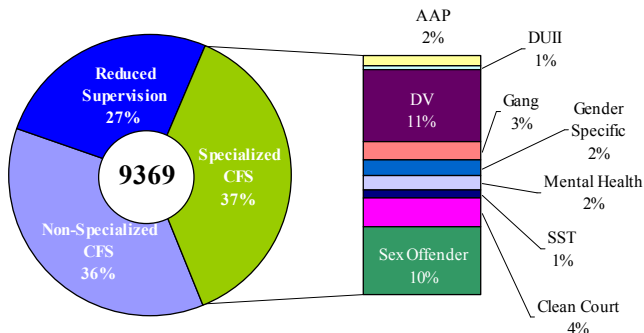
Adult Community Supervision: Caseloads



Juvenile Community Supervision: Caseloads

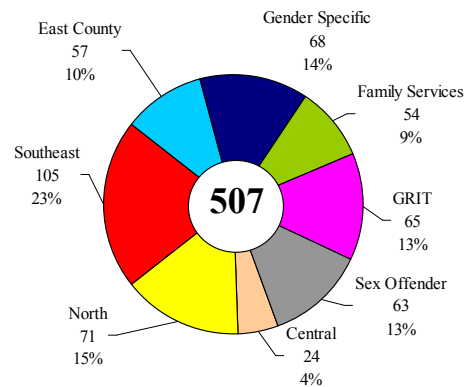


Adult Active Caseload by Type*: October 2007



*Less than 1% are "other" cases which have been included as non-specialized.

Juvenile Justice Caseload by Unit*: October 2007



*The average caseload per counselor was 23.4 cases for October.

Notes: The number of average daily adult court cases closed in October was up by 18% over September. October also saw a small decrease in adult supervision caseload as well as juvenile caseload.