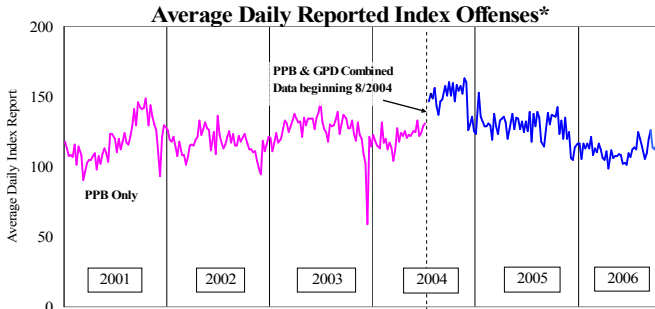


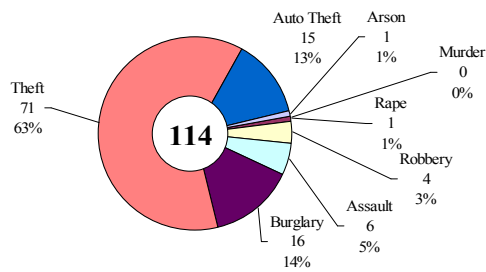
SAFETY PRIORITY BRIEF: OCTOBER 2006

Multnomah County: Reported Index Offenses



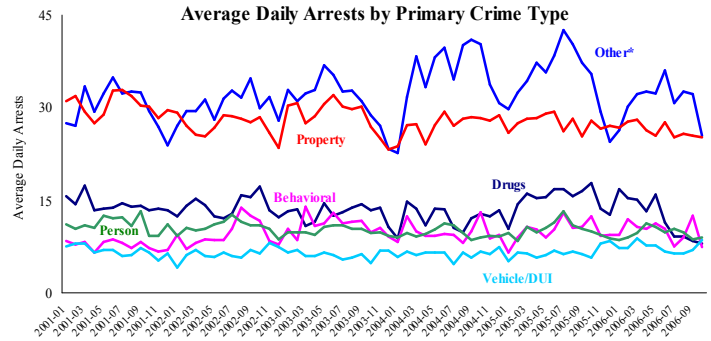
*The graph reflects the combined weekly index offenses data from Portland Police Bureau (PPB) and Gresham Police Dept (GPD), beginning 8/2004 (line in blue). According to LEDS (2005) data PPB and GPD account for 95% of all offenses county-wide. Index offenses account for about half of all reported offenses.

Average Daily Reported Index Offenses*



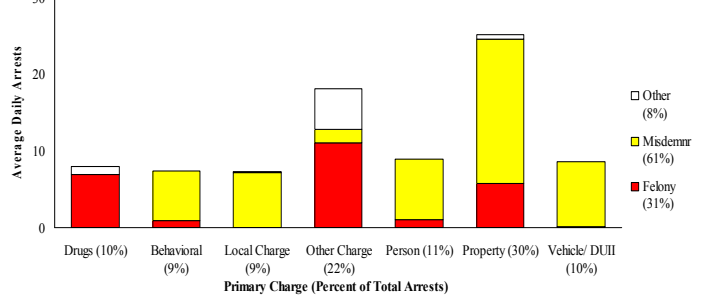
*Portland and Gresham, combined 4-week moving average for the week ending 10-28-06.

Multnomah County: Portland Arrests



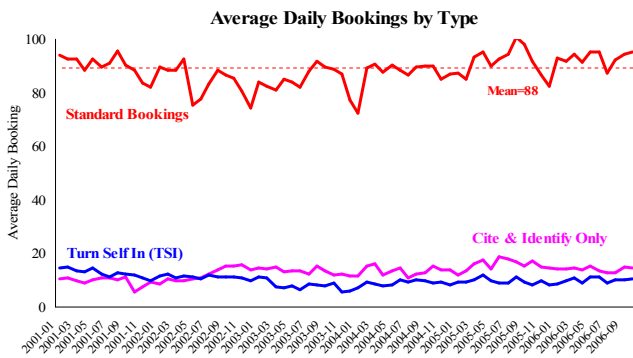
*Other largely reflects fugitive/warrant charges and local ordinances (DFZ/PFZ). PPB data only, downloaded 11-17-2006.

Average Daily Arrests*: October (n=84)



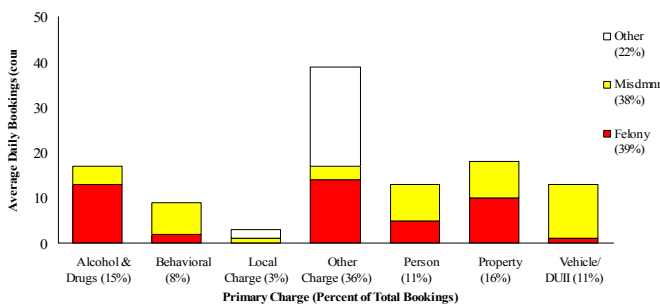
*There were 2,595 arrests in October. Local Charges include drug-free and prostitution free zone violations.

Sheriff: Bookings



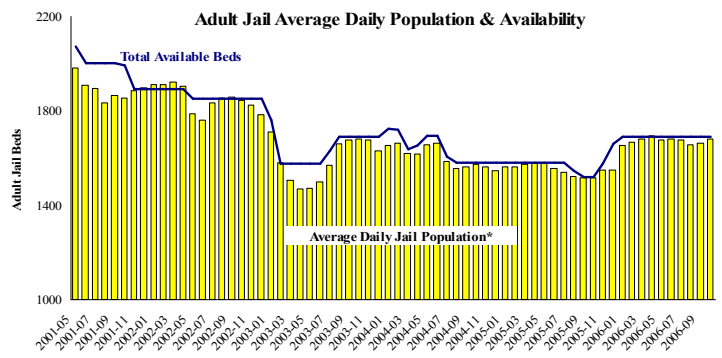
*In-transit bookings are not reported herein and account for ~4% of all bookings. October's average length of stay (ALS) per booking was 17.36 days.

Average Daily Bookings by Severity*: October (n=109)



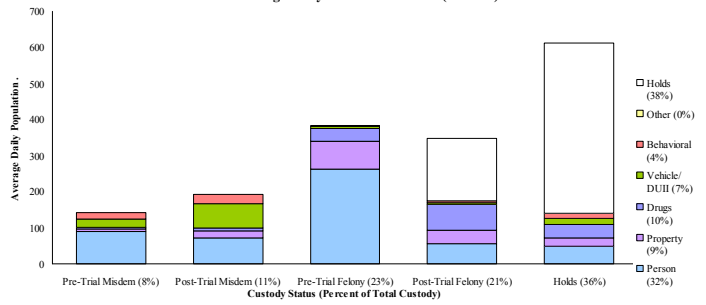
*Excludes Cite & ID. October had 3387 bookings (109/day). Corrections Health reported 599 psych-alerts (18/day).

Sheriff: Custody- Adult Jail Beds



*Excludes in-transit custody classifications. The MCSO reported 175 matrix releases for October 2006 (5.6/day).

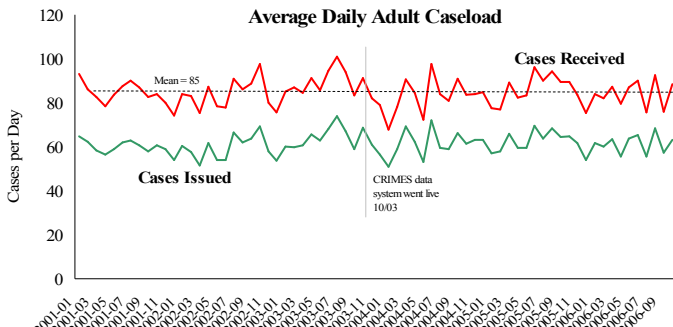
Average Daily Bed Use: October (n=1681)



Average Daily Jail System Capacity=1690. Average Daily Population (ADP)=1681; there were 9 available beds on any given day.

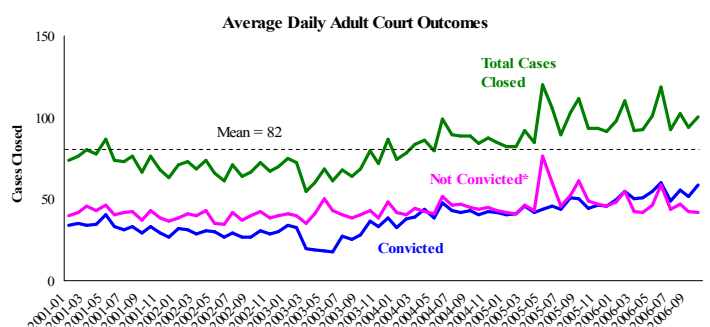
Notes: Average daily arrests decreased by 8.7% compared to last month. Average daily arrests decreased primarily due to a decrease in *Other* arrests. The MCSO reported 175 matrix releases in October (avg. 5.6/day) and the average length of stay (ALS) remained stable (17 days per booking). October's overall jail utilization was 99.4%, leaving only 9 beds available on any given day.

District Attorney: Adult Caseload



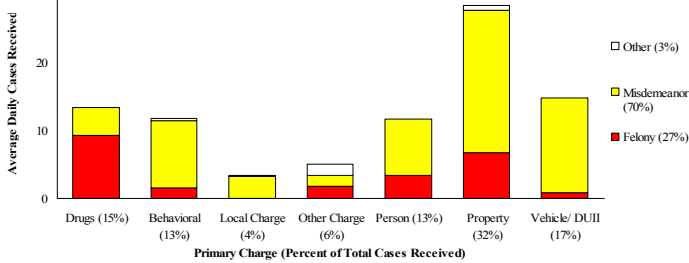
*Data retrieved 11/29/06. Note: Many recently received cases are pending review.

Court Processes: Sentencing Outcomes



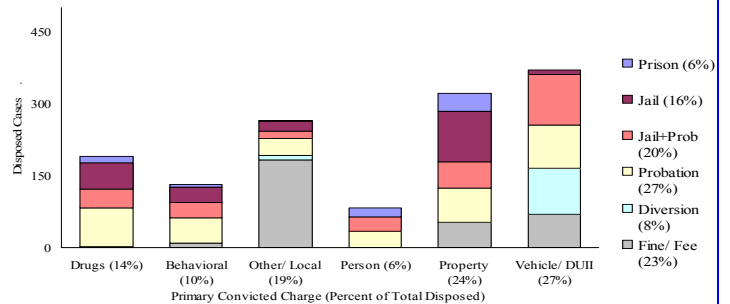
*Includes dismissed cases (typically 'no complainant') and cases found not guilty. Adult felony and misdemeanor cases only.

Average Daily Received Cases*: October (n=89)



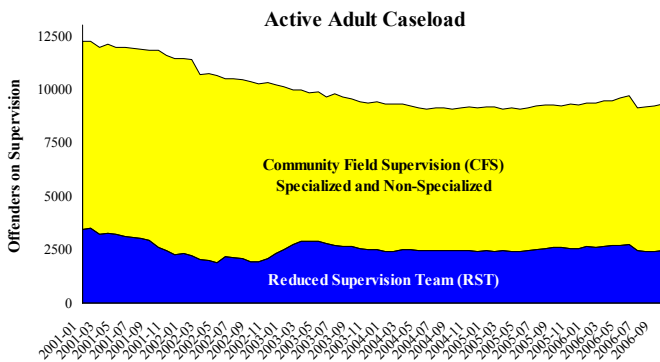
*October had 2,747 received cases as of 11-28-06 (89/day). Of those, 397 cases were pending review.

Disposition Type by Primary Conviction*: October 2006

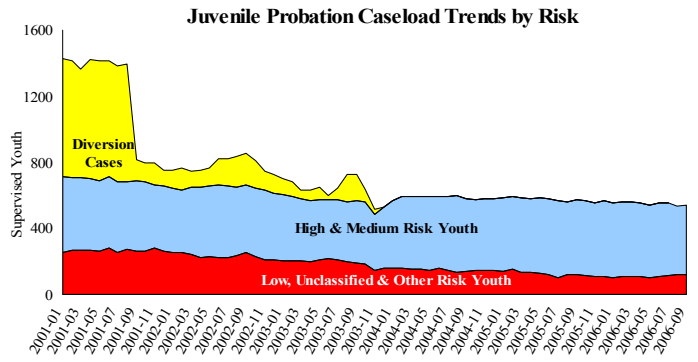


*Sentenced adult felony and misdemeanors primary convictions only. Primary conviction charge is the most serious charge with a conviction and may differ from the original primary charge. October had 1,820 convictions; 25% were felonies.

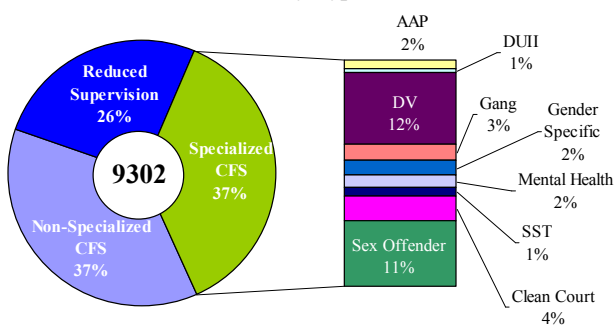
Adult Community Supervision: Caseloads



Juvenile Community Supervision: Caseloads

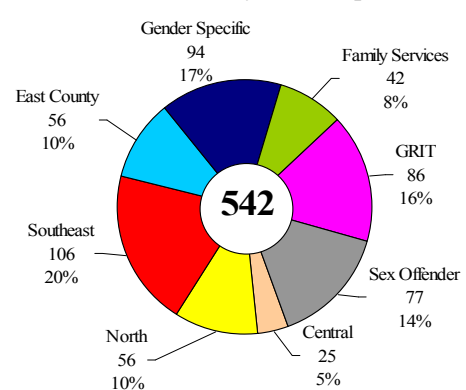


Adult Active Caseload by Type*: October 2006



*Less than 1% are "other" cases which have been included as non-specialized.

Juvenile Justice Caseload by Unit*: September 2006



*The average caseload per counselor was 22.8 cases for September.

Notes: The Active Adult Caseload increased in October by 8%. . Increases were shown in DV and AAP cases. Juvenile justice caseloads increased in September.