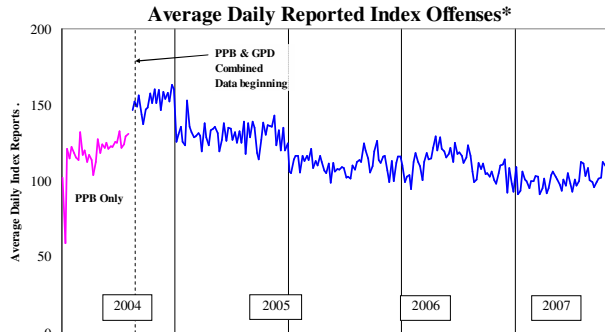


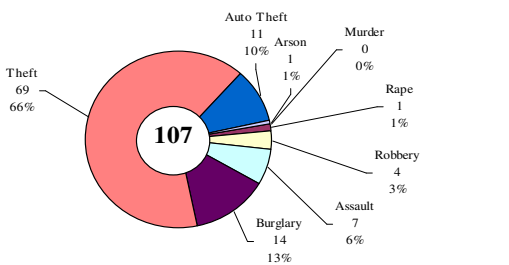
SAFETY PRIORITY BRIEF: SEPTEMBER 2008

Multnomah County: Reported Index Offenses



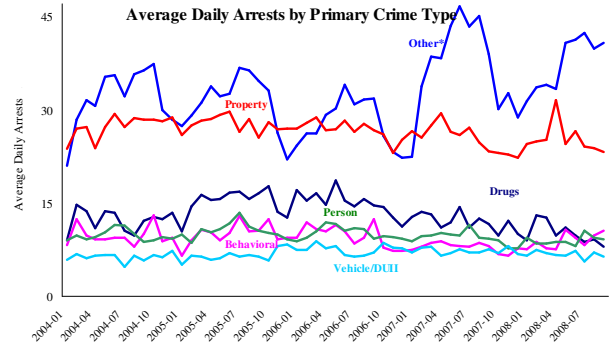
*The graph reflects the combined weekly index offenses data from Portland Police Bureau (PPB) and Gresham Police Dept (GPD), beginning 8/2004 (line in blue). According to LEADS (2005) data PPB and GPD account for 95% of all offenses county-wide. Index offenses account for about half of all reported offenses.

Average Daily Reported Index Offenses*



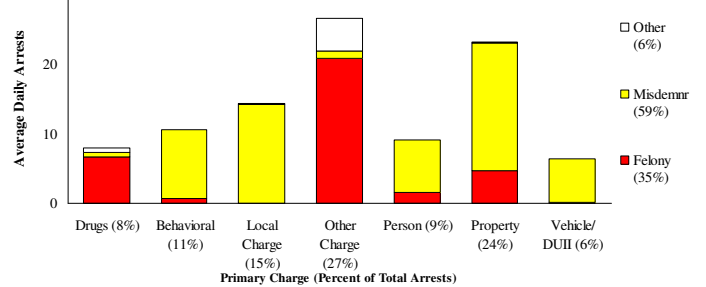
*Portland and Gresham, combined 4-week moving average for the week ending 10-4-08.

Multnomah County: Portland Arrests



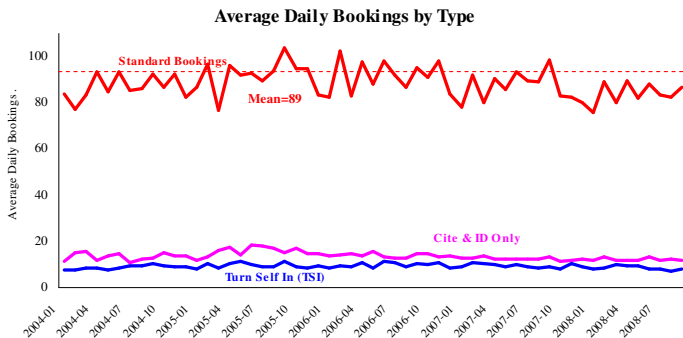
*Other largely reflects fugitive/warrant charges and local ordinances (DFZ/PFZ). PPB data only, downloaded 10/16/2008.

Average Daily Arrests*: September (n=98)



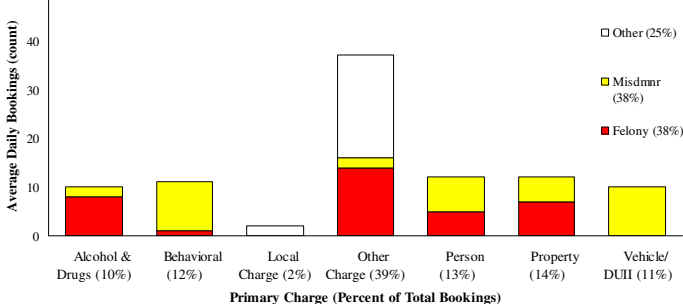
Local charges include drug- and prostitution-free zone stations. *There were 2936 arrests in September. From now on, warrants previously categorized as 'other' will be listed under felony arrests.

Sheriff: Bookings



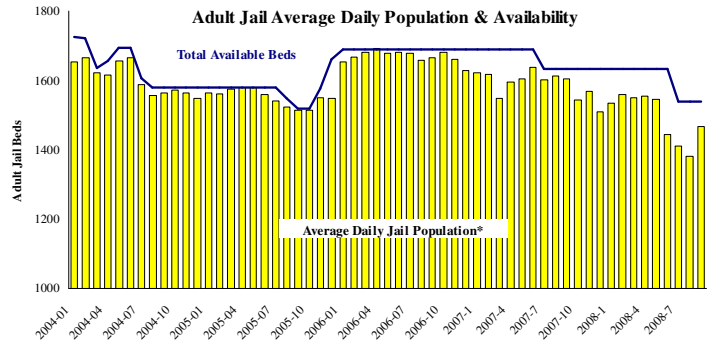
*In-transit bookinist are not reported herein and account for ~4% of all bookings. September's average length of stay (ALS) per booking was 16.3 days.

Average Daily Bookings by Severity*: September (n=94)



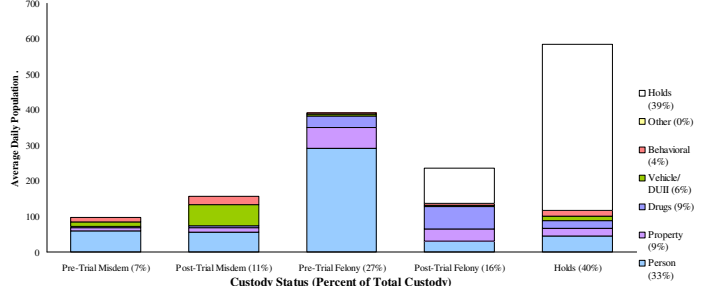
*Excludes Cite & ID. Total of 2919 bookings (94.2/day) through 9/30/2008. Corrections Health reported 575 psych-arrests (18.5/day) for the entire month of September.

Sheriff: Custody- Adult Jail Beds



*Excludes in-transit custody classifications. The MCSO reported 0 matrix releases for September 2008.

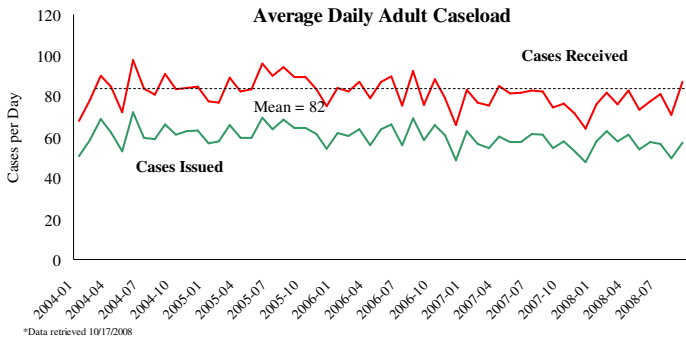
Average Daily Bed Use: September (n=1466)



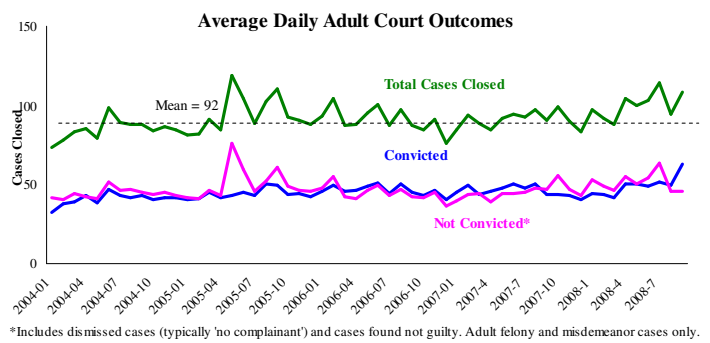
Average Daily Jail System Capacity=1539. Average Daily Population (ADP)=1466; there were 73 available beds on any given day.

Notes: Average Daily Reported Offenses, after declining from July to August increased 9% to 107 per day. This change was primarily from increases in Theft and Auto Theft crimes. Average Daily Arrests decreased 3% from the previous month with a continued decline in all other categories except for Other. Average Daily Population increased for the first time since April; increasing the utilization rate to 95.3 %.

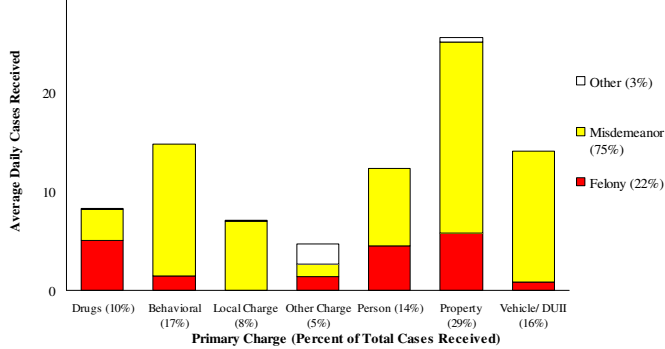
District Attorney: Adult Caseload



Court Processes: Sentencing Outcomes

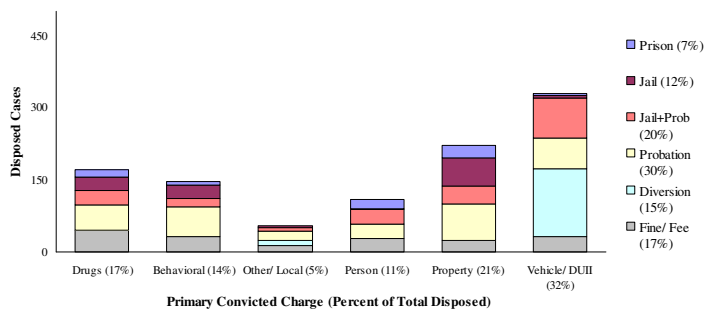


Average Daily Received Cases*: September (n=87)



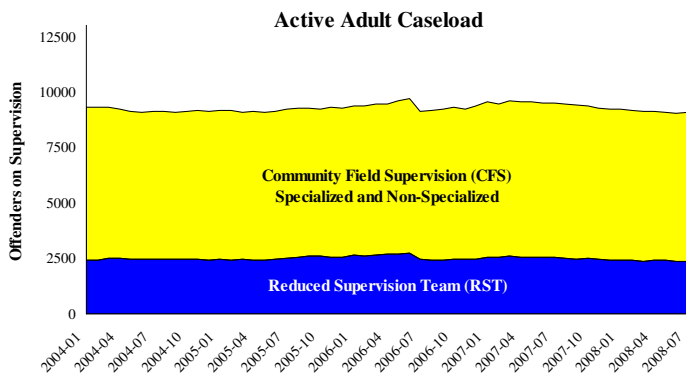
*September had 2611 received cases as of 9/30/2008 (87/day). 2111 cases were resolved in September.

Disposition Type by Primary Conviction*: September 2008

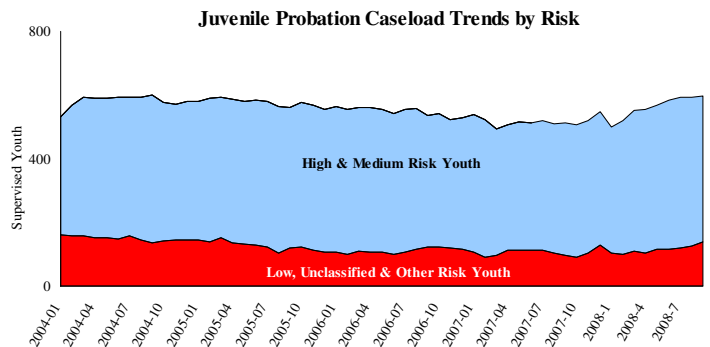


*Sentenced adult felony and misdemeanor primary convictions only. Primary conviction charge is the most serious charge with a conviction and may differ from the original primary charge. September had 1878 convictions; 19% were felonies.

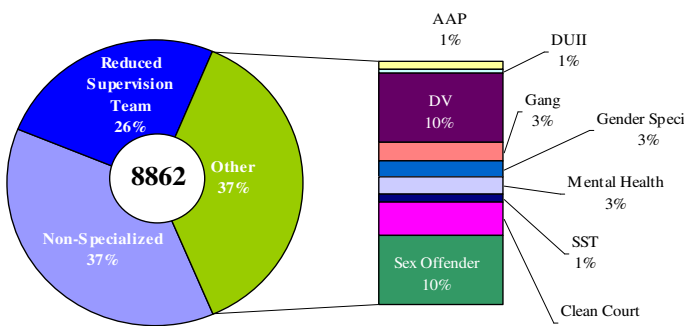
Adult Community Supervision: Caseloads



Juvenile Community Supervision: Caseloads

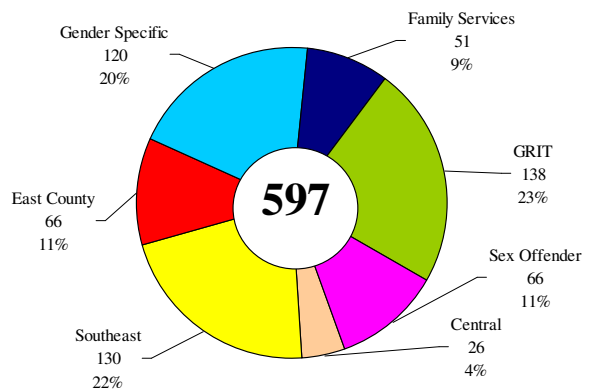


Adult Active Caseload by Type*: September 2008



*Less than 1% are "other" cases which have been included as non-specialized.

Juvenile Justice Caseload by Unit*: September 2008



*The average caseload per counselor was 27.3 cases for September.

Notes: District Attorney Average Daily Received Cases, continued the trend of increases and decreases, increasing 22% from August to September, to 87. This was its highest level since December 2006. Average Daily Adult Court Outcome and Juvenile probation caseloads continue to rise. The biggest increase was in Primary Conviction in the categories of Behavioral and Vehicle/ DUI categories.