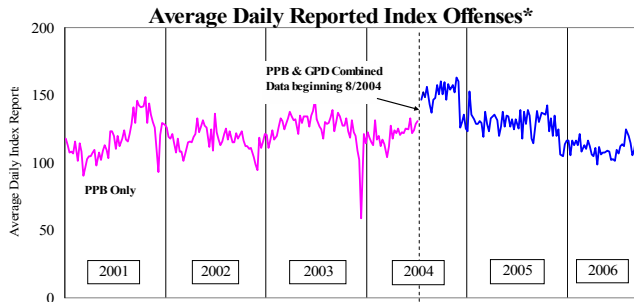


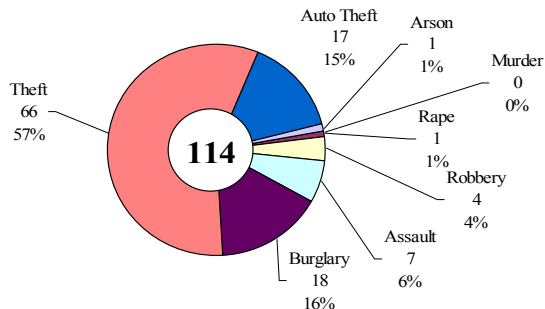
SAFETY PRIORITY BRIEF: SEPTEMBER 2006

Multnomah County: Reported Index Offenses



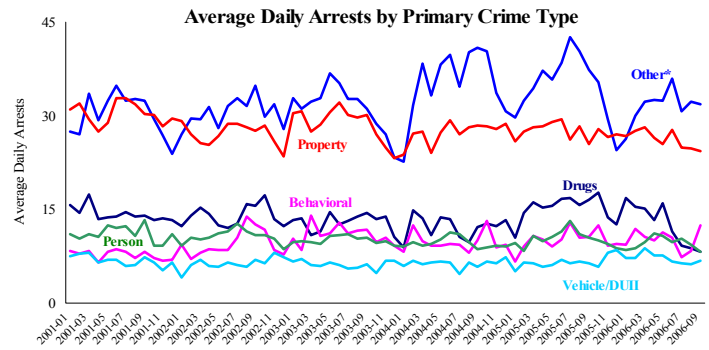
*The graph reflects the combined weekly index offenses data from Portland Police Bureau (PPB) and Gresham Police Dept (GPD), beginning 8/2004 (line in blue). According to LEADS (2005) data PPB and GPD account for 95% of all offenses county-wide. Index offenses account for about half of all reported offenses.

Average Daily Reported Index Offenses*



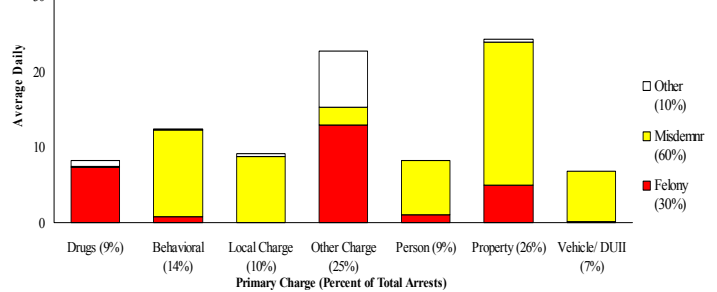
*Portland and Gresham, combined 4-week moving average for the week ending 9-30-06.

Multnomah County: Portland Arrests



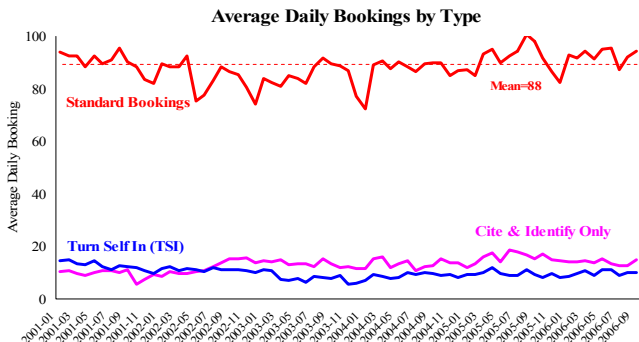
*Other largely reflects fugitive/warrant charges and local ordinances (DEFZ/PFZ). PPB data only, downloaded 10-23-2006.

Average Daily Arrests*: September (n=92)



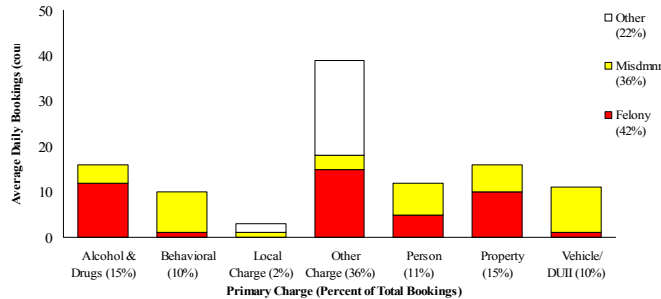
*There were 2,754 arrests in September. Local Charges include drug-free and prostitution free zone violations.

Sheriff: Bookings



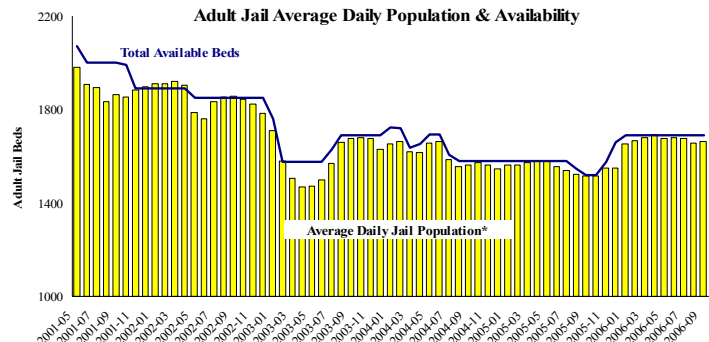
*In-transit bookings are not reported herein and account for ~4% of all bookings. September's average length of stay (ALS) per booking was 17.0 days.

Average Daily Bookings by Severity*: September (n=107)



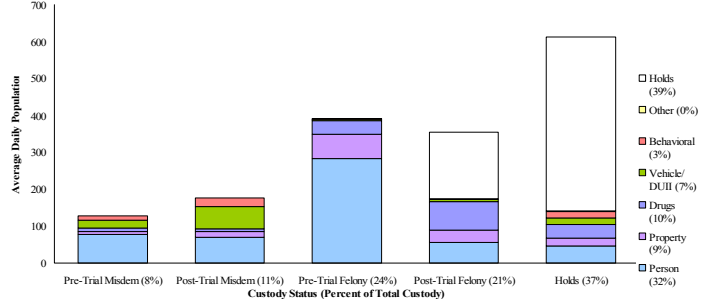
*Excludes Cite & ID. September had 3223 bookings (107/day). Corrections Health reported 501 psych-alerts (16.7/day).

Sheriff: Custody- Adult Jail Beds



*Excludes in-transit custody classifications. The MCSO reported 139 matrix releases for September 2006 (4.6/day).

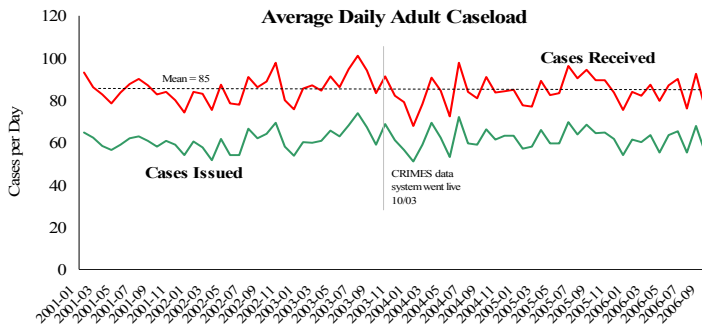
Average Daily Bed Use: September (n=1664)



Average Daily Jail System Capacity=1690. Average Daily Population (ADP)=1664; there were 26 available beds on any given day.

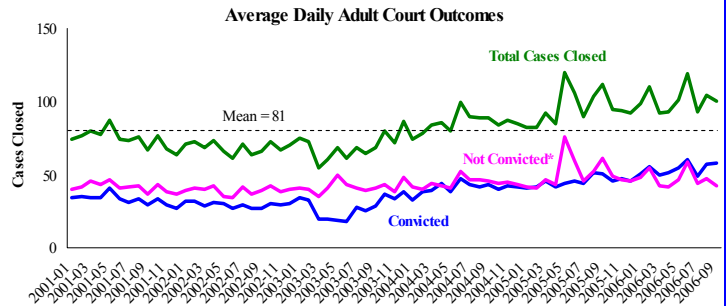
Notes: Average reported daily index offenses continued their increase and are 6% higher compared to last month. This increase is driven by larceny from auto and auto theft (PPB). Average daily arrests increased primarily due to Behavioral arrests. Standard bookings of felonies increased due to alcohol & drugs and property arrests. The MCSO reported 139 matrix releases in September (avg. 4.6/day) and the average length of stay (ALS) decreased (17 days per booking). September's overall jail utilization was 98.5%, leaving only 26 beds available on any given day.

District Attorney: Adult Caseload



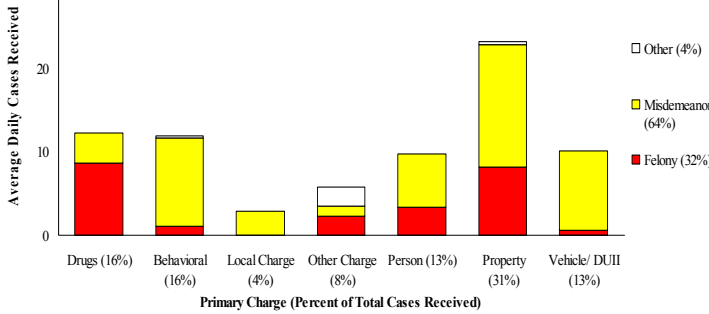
*Data retrieved 10/23/06. Note: Many recently received cases are pending review.

Court Processes: Sentencing Outcomes



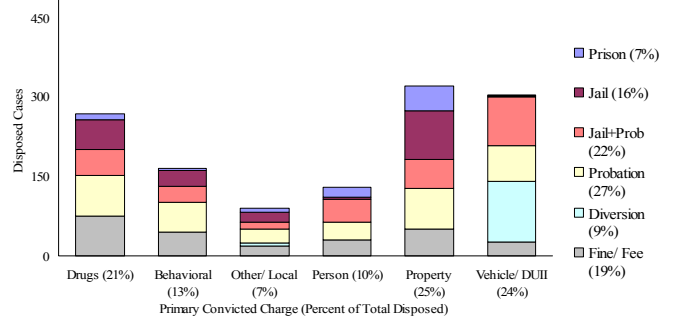
*Includes dismissed cases (typically 'no complainant') and cases found not guilty. Adult felony and misdemeanor cases only.

Average Daily Received Cases*: September (n=76)



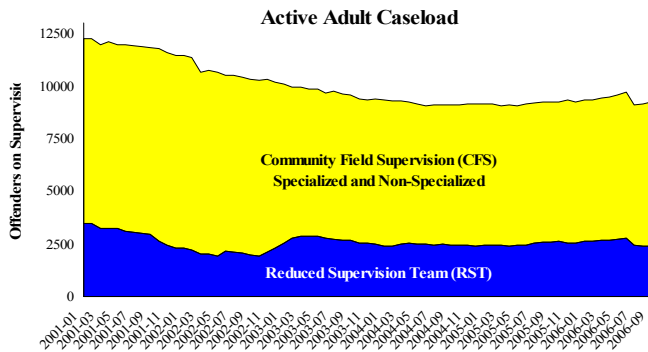
*September had 2,282 received cases as of 10/23/06 (76/day). Of those, 302 cases were pending review.

Disposition Type by Primary Conviction*: September 2006

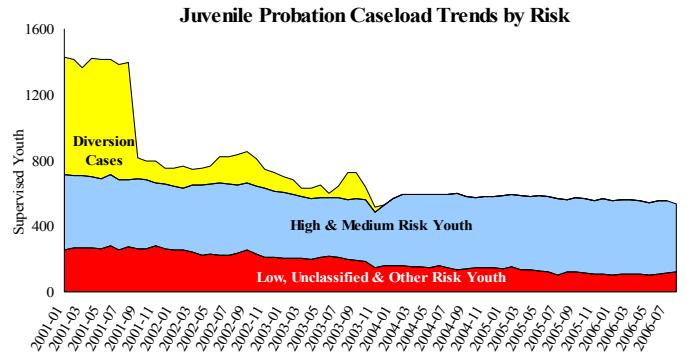


*Sentenced adult felony and misdemeanors primary convictions only. Primary conviction charge is the most serious charge with a conviction and may differ from the original primary charge. September had 1,738 convictions; 27% were felonies.

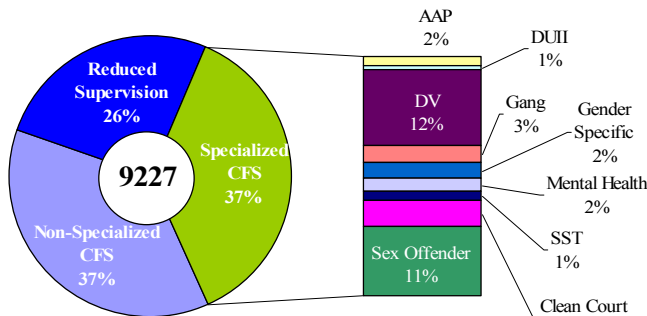
Adult Community Supervision: Caseloads



Juvenile Community Supervision: Caseloads

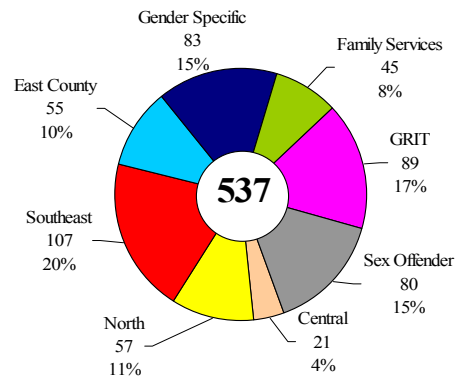


Adult Active Caseload by Type*: September 2006



*Less than 1% are "other" cases which have been included as non-specialized.

Juvenile Justice Caseload by Unit*: August 2006



*The average caseload per counselor was 23.6 cases for August.

Notes: The DA's average daily adult caseload received decreased 19.1% from August. Decreases were seen in each category, with the biggest drop in property misdemeanor cases. The active adult caseload showed slight increases in DV and Clean Court cases. Juvenile justice caseloads decreased 3.6% from August, primarily in gender specific cases.