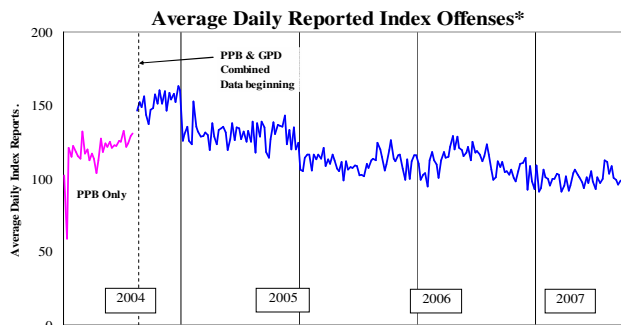


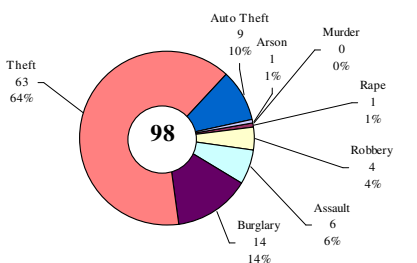
SAFETY PRIORITY BRIEF: AUGUST 2008

Multnomah County: Reported Index Offenses



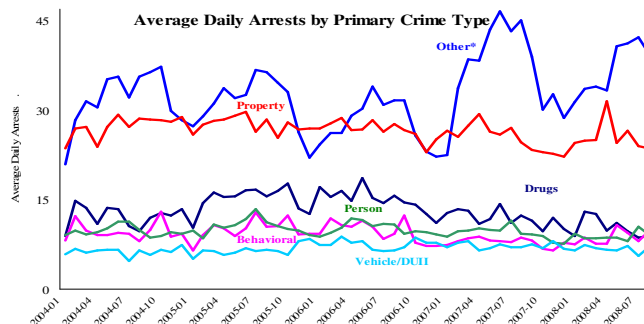
*The graph reflects the combined weekly index offenses data from Portland Police Bureau (PPB) and Gresham Police Dept (GPD), beginning 8/2004 (line in blue). According to LEDS (2005) data PPB and GPD account for 95% of all offenses county-wide. Index offenses account for about half of all reported offenses.

Average Daily Reported Index Offenses*



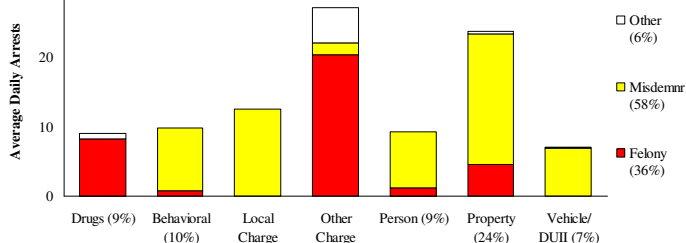
*Portland and Gresham, combined 4-week moving average for the week ending 9-6-08.

Multnomah County: Portland Arrests



*Other largely reflects fugitive/warrant charges and local ordinances (DFZ/PFZ). PPB data only, downloaded 9/17/08.

Average Daily Arrests*: August (n=98)



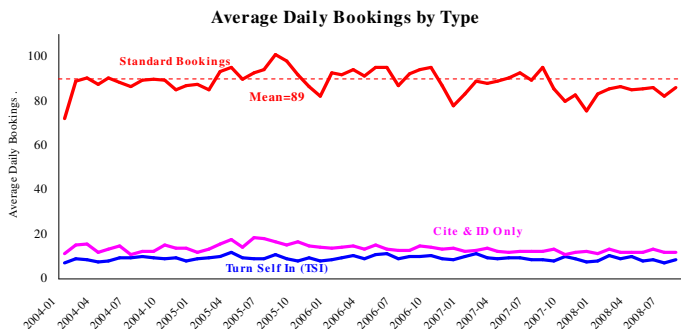
Local charges include drug- and prostitution-free zone violations.

Primary Charge (Percent of Total Arrests)

*There were 3041 arrests in August.

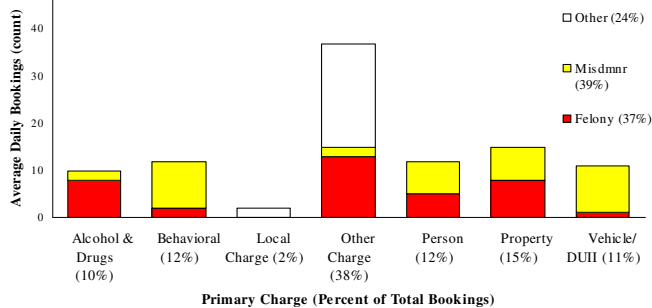
From now on, warrants previously categorized as 'other' will be listed under felony arrests.

Sheriff: Bookings



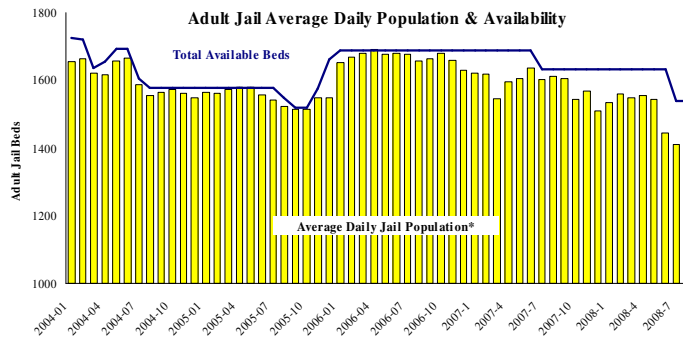
*In-transit bookinist are not reported herein and account for ~4% of all bookings. August's average length of stay (ALS) per booking was 16.17 days.

Average Daily Bookings by Severity*: August (n=97)



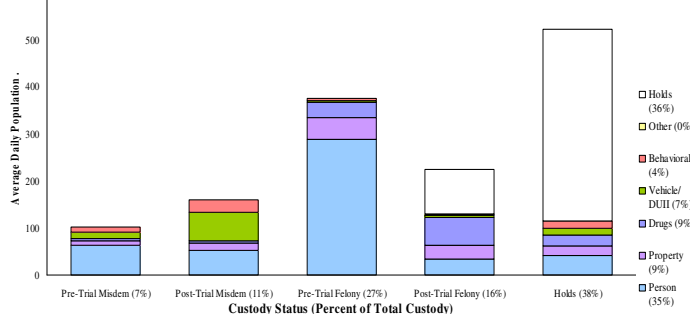
*Excludes Cite & ID. Total of 3014 bookings (97.2/day) through 8/31/08. Corrections Health reported 528 psych-alerts (17/day) for the entire month of August.

Sheriff: Custody- Adult Jail Beds



*Excludes in-transit custody classifications. The MCSO reported 0 matrix releases for August 2008.

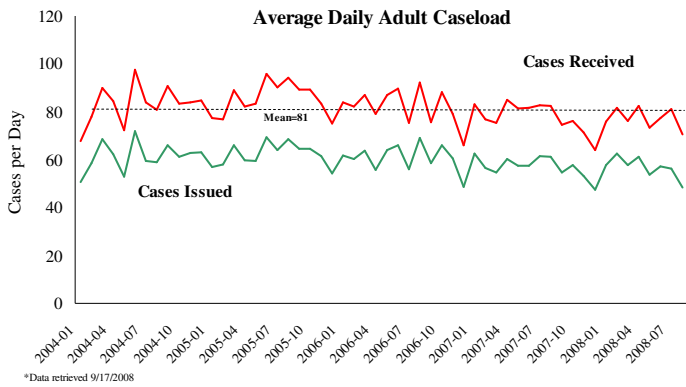
Average Daily Bed Use: August (n=1381)



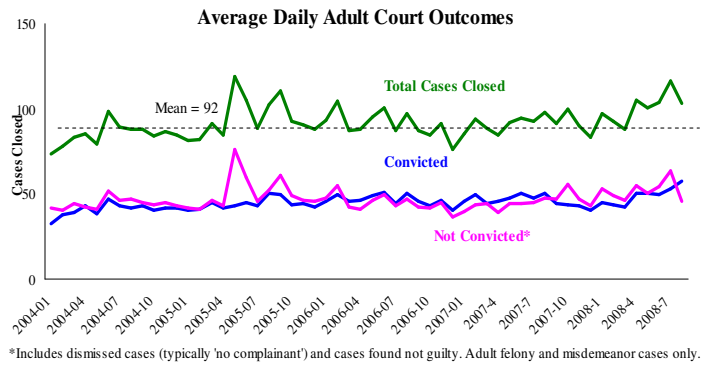
Average Daily Jail System Capacity=1539. Average Daily Population (ADP)=1381; there were 158 available beds on any given day.

Notes: Average Daily Reported Offenses went down 8.4% from July to August at 98 per day. This change was primarily from decreases in Theft and Auto Theft crimes. Average Daily Arrests increased by 1% from the previous month with a continued decline in the Property category from its peak in April. This decrease was counteracted by increases in other categories. Average Daily Population continues to decrease; dropping from 1409 in July to 1381 with a 89.7% utilization rate.

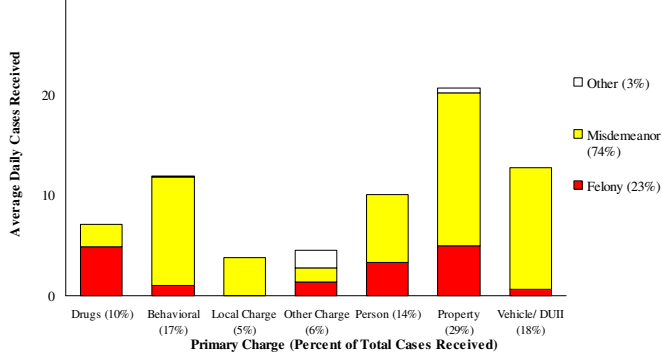
District Attorney: Adult Caseload



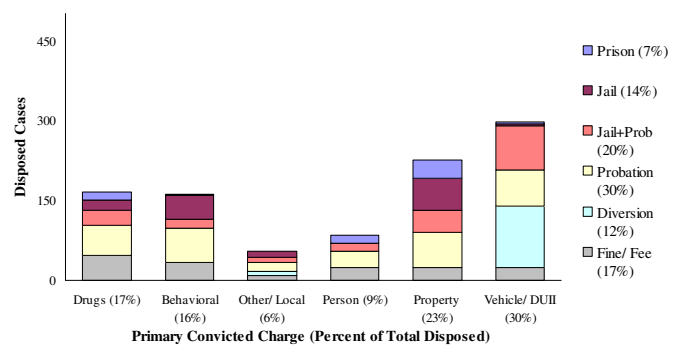
Court Processes: Sentencing Outcomes



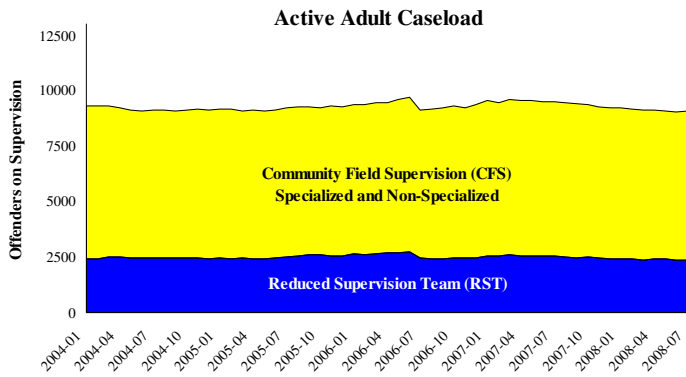
Average Daily Received Cases*: August (n=71)



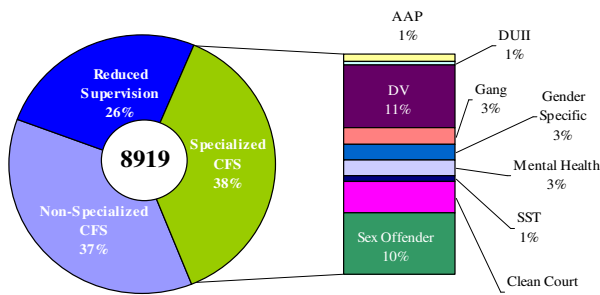
Disposition Type by Primary Conviction*: August 2008



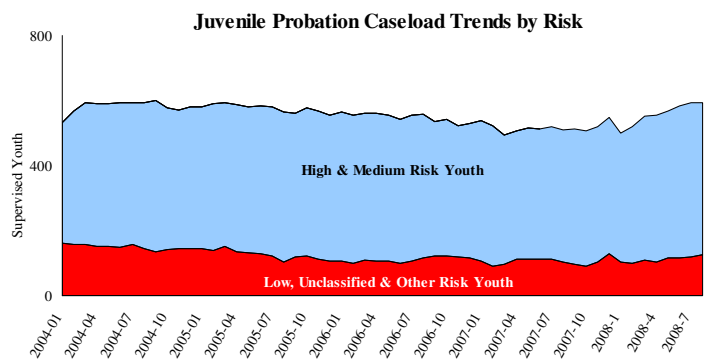
Adult Community Supervision: Caseloads



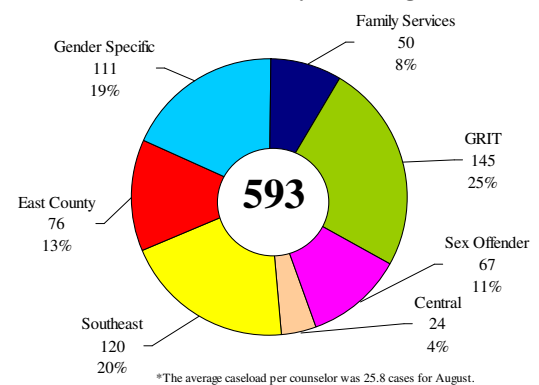
Adult Active Caseload by Type*: August 2008



Juvenile Community Supervision: Caseloads



Juvenile Justice Caseload by Unit*: August 2008



Notes: Average Daily Received Cases decreased 12.3% from July to August, down to 71. This was its lowest level since December 2007. The decrease was primarily due to drops in the Local Charge, Person, and Property categories. After the high level of Average Daily Adult Court Outcomes in July the Total Cases Closed and number of Convictions decreased to more conventional levels.