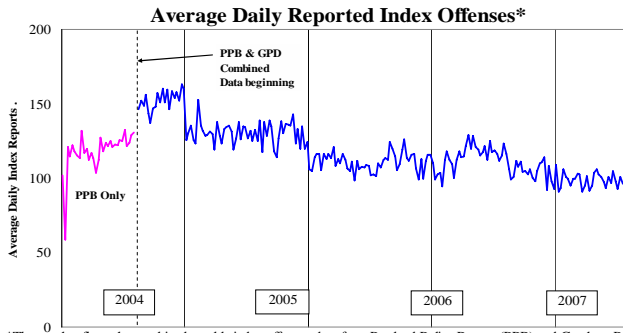


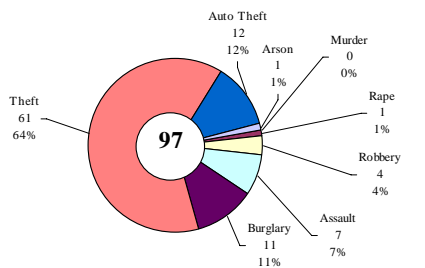
SAFETY PRIORITY BRIEF: JUNE 2008

Multnomah County: Reported Index Offenses



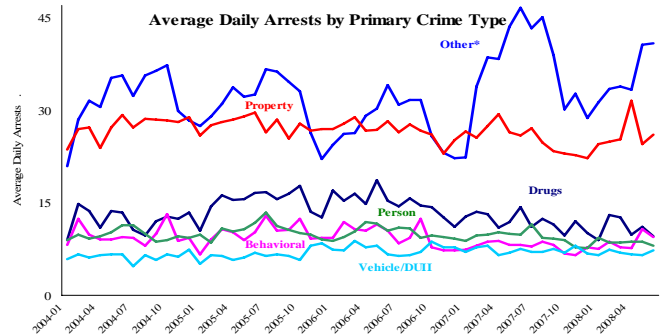
*The graph reflects the combined weekly index offenses data from Portland Police Bureau (PPB) and Gresham Police Dept (GPD), beginning 8/2004 (line in blue). According to LEDS (2005) data PPB and GPD account for 95% of all offenses county-wide. Index offenses account for about half of all reported offenses.

Average Daily Reported Index Offenses*



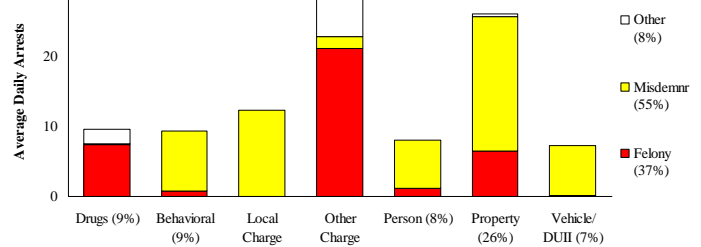
*Portland and Gresham, combined 4-week moving average for the week ending 7-5-08.

Multnomah County: Portland Arrests



*Other largely reflects fugitive/warrant charges and local ordinances (DFZ/PFZ). PPB data only, downloaded 7/16/08.

Average Daily Arrests*: June (n=101)

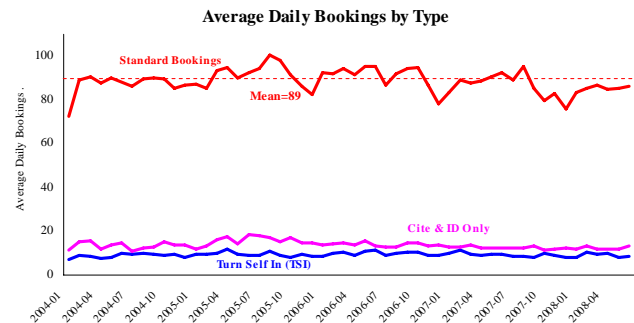


Local charges include drug- and prostitution-free zone violations.

*There were 3036 arrests in June.

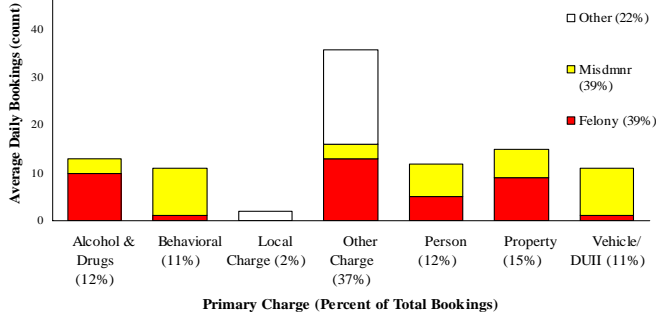
From now on, warrants previously categorized as 'other' will be listed under felony arrests.

Sheriff: Bookings



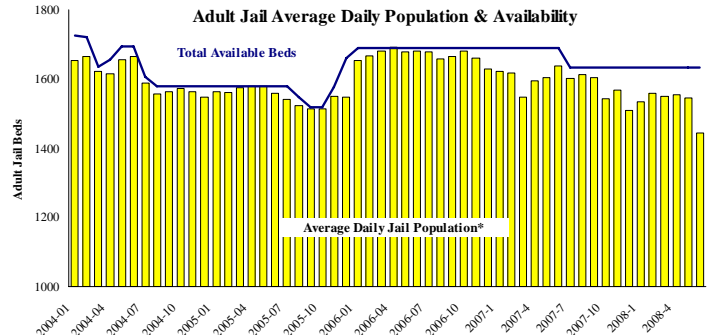
*In-transit bookinist are not reported herein and account for ~4% of all bookings. June's average length of stay (ALS) per booking was 17.9 days.

Average Daily Bookings by Severity*: June (n=98)



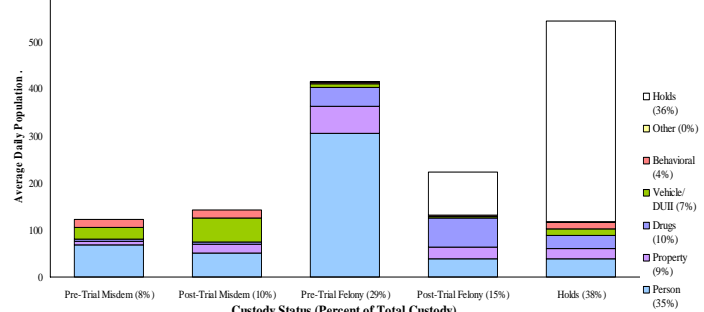
*Excludes Cite & ID. Total of 2937 bookings (97.9/day) through 6/30/08. Corrections Health reported 494 psych-alerts (16.5/day) for the entire month of June.

Sheriff: Custody- Adult Jail Beds



*Excludes in-transit custody classifications. The MCSO reported 0 matrix releases for June 2008.

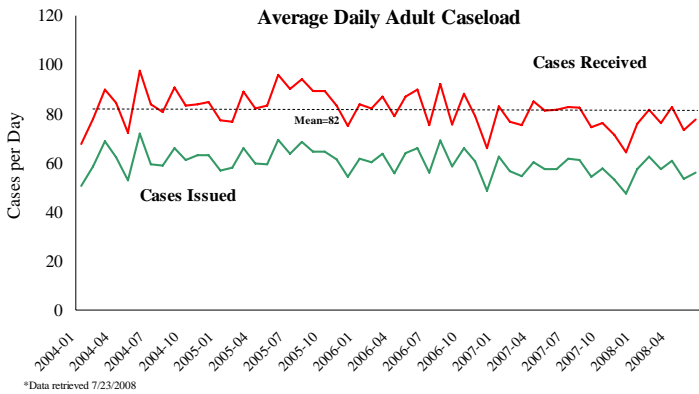
Average Daily Bed Use: June (n=1445)



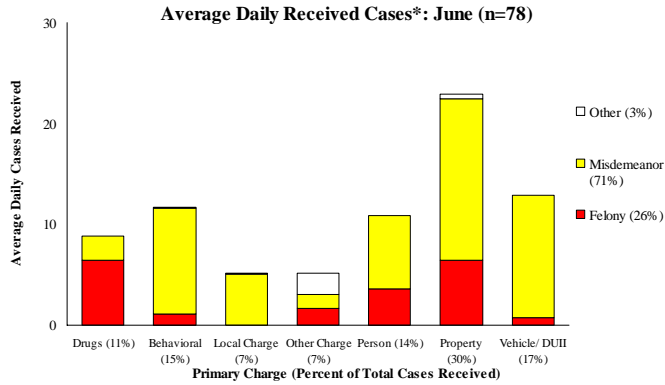
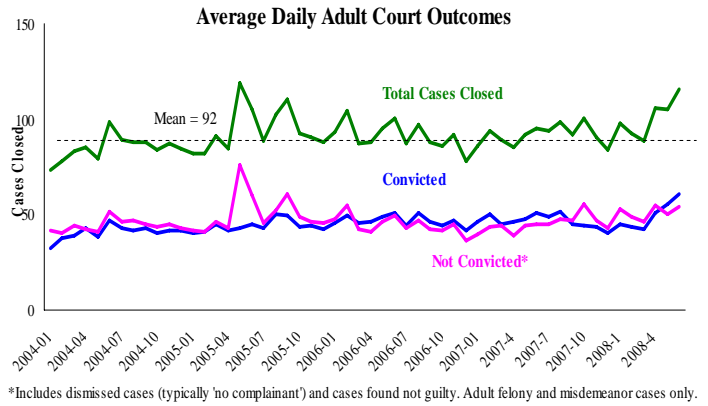
Average Daily Jail System Capacity=1539. Average Daily Population (ADP)=1445; there were 94 available beds on any given day.

Notes: Average Daily Arrests leveled after a sharp increase from April to May; remaining at 101 per day. This happened in both the Other and Property categories. Average Daily Population changed significantly from 1545 in May to 1445 in June as the Sheriff Office was preparing for a system reduction of jail capacity starting in July. Multnomah County budgeted jail capacity changed from 1633 in FY 2008 to 1539 in FY 2009. The June decrease is also a result of the bed reduction strategy adopted by the Department of Community Justice three months ago. The number of beds used by DCJ detainees or supervision violation sanctions has declined consistently over the past months.

District Attorney: Adult Caseload

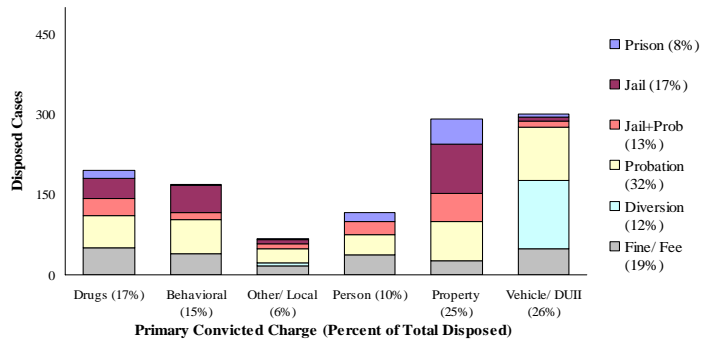


Court Processes: Sentencing Outcomes



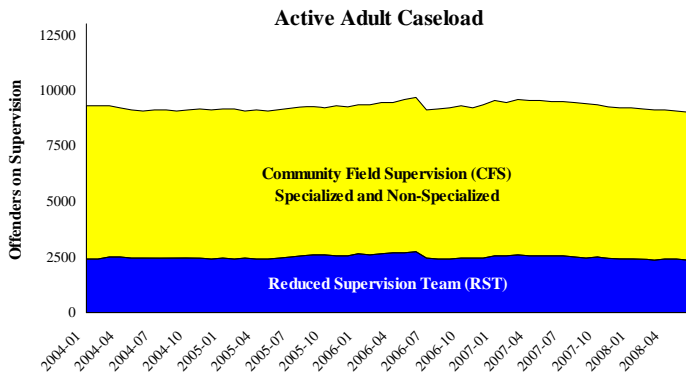
*June had 2326 received cases as of 6-30-2008 (77.5/day). 2382 cases were resolved in June.

Disposition Type by Primary Conviction*: June 2008

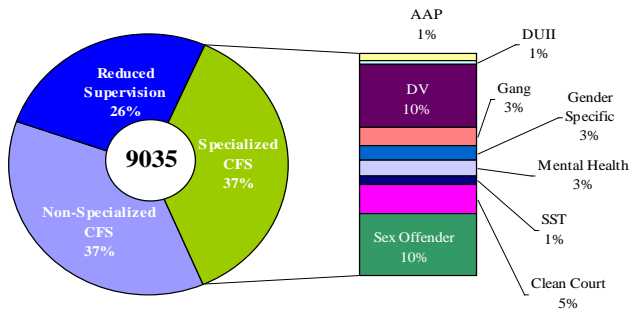


*Sentenced adult felony and misdemeanors primary convictions only. Primary conviction charge is the most serious charge with a conviction and may differ from the original primary charge. June had 1,832 convictions; 21% were felonies.

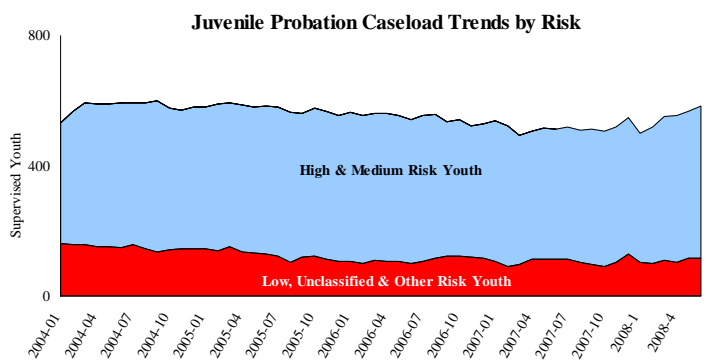
Adult Community Supervision: Caseloads



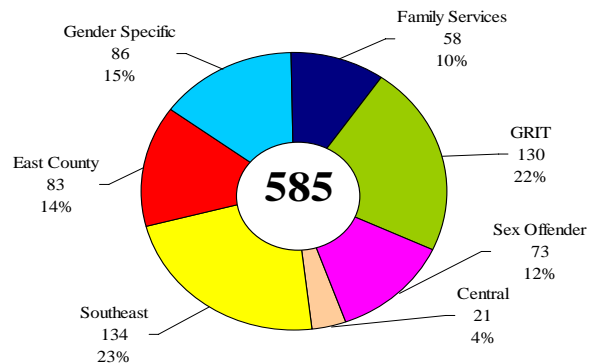
Adult Active Caseload by Type*: June 2008



Juvenile Community Supervision: Caseloads



Juvenile Justice Caseload by Unit*: June 2008



Notes: Average Daily Adult Received cases experienced a 6.8% increase from May to June. The majority of this increase came from Cases Issued from misdemeanor Local Charge and Person cases. Total Average Daily Adult Court Cases Closed increased from May to June. This was due to increases of Misdemeanor convictions and Felony Dismissals and Misdemeanor Not Guilty cases closed. Cases ending in a conviction continued to increase in June with the highest average daily level (61) since January 2004.