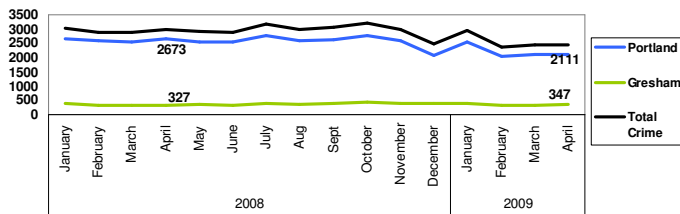


SAFETY PRIORITY BRIEF: APRIL 2009

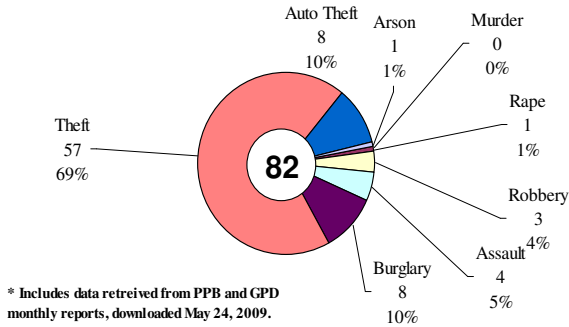
Multnomah County: Reported Index Offenses

Previous 15 Month Totals of Part I Reported Offenses by City (Highlighting April Months)



* Includes data retrieved from PPB and GPD monthly reports, downloaded May 24, 2009.

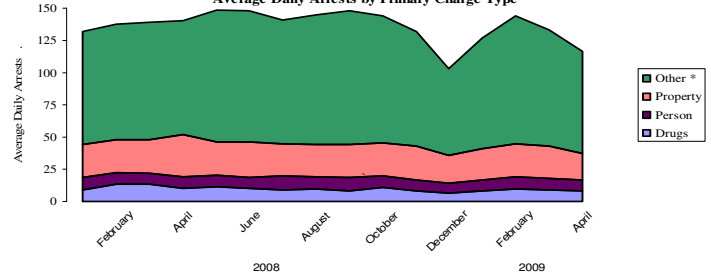
Average Daily Reported Index Offenses*



* Includes data retrieved from PPB and GPD monthly reports, downloaded May 24, 2009.

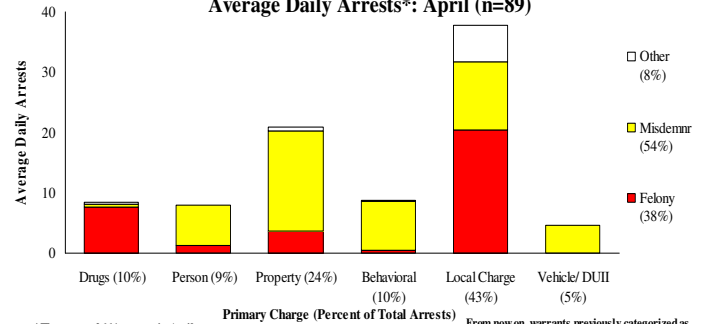
Multnomah County: Portland Arrests

Average Daily Arrests by Primary Charge Type



* Fugitive/warrant charges, behavioral and vehicular arrests and violations of local ordinances. PPB data only. Source: Dss-J downloaded May 15th, 2009.

Average Daily Arrests*: April (n=89)

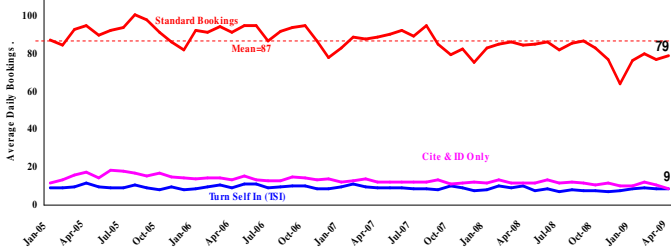


*There were 2661 arrests in April. Source: Dss-J

From now on, warrants previously categorized as 'other' will be listed under felony arrests.

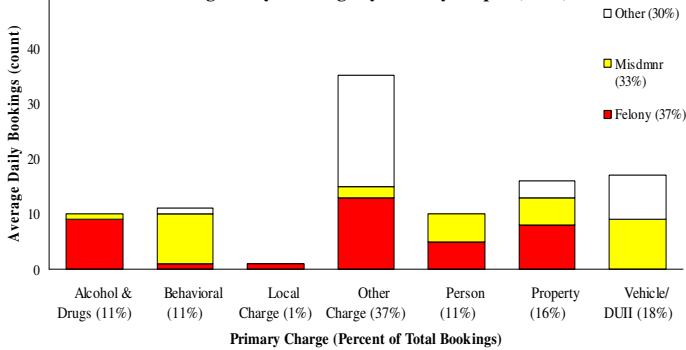
Sheriff: Bookings

Average Daily Bookings by Type



Source: Dss-J Data Retrieved: May 25th, 2009.

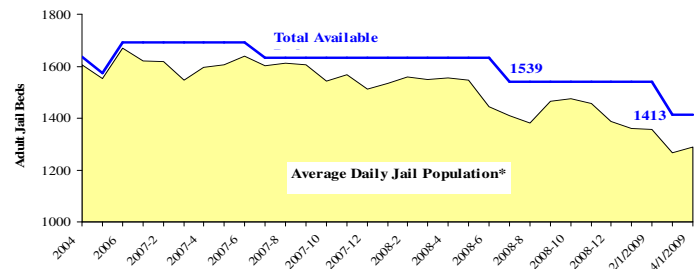
Average Daily Bookings by Severity*: April (n=97)



*Excludes Cite & ID. Total of 2901 bookings (96.7/day) through 03/31/2009. Corrections Health reported 519 psych-alerts (17.3/day) for the entire month of April Source: Dss-J Data Retrieved: May 25th, 2009

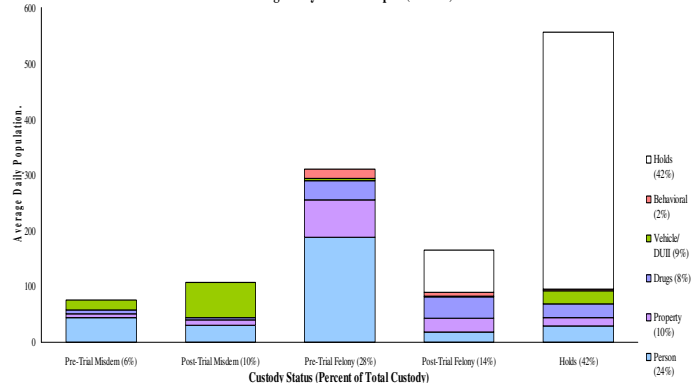
Sheriff: Custody- Adult Jail Beds

Adult Jail Average Daily Population & Availability



*Excludes in-transit custody classifications. The MCSO reported 0 matrix releases for April 2009. Data retrieved from DSS-J on May 22, 2009.

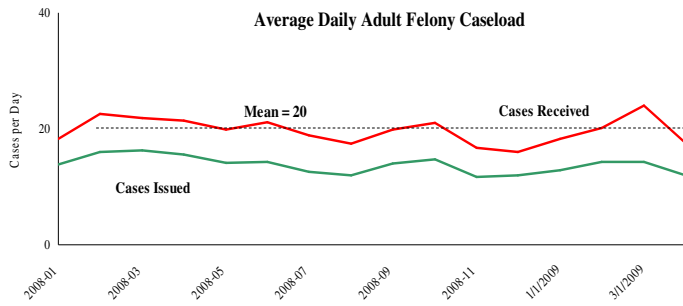
Average Daily Bed Use: April (n=1287)



Average Daily Jail System Capacity=1413. Average Daily Population (ADP)=1287 Source: Dss-J.

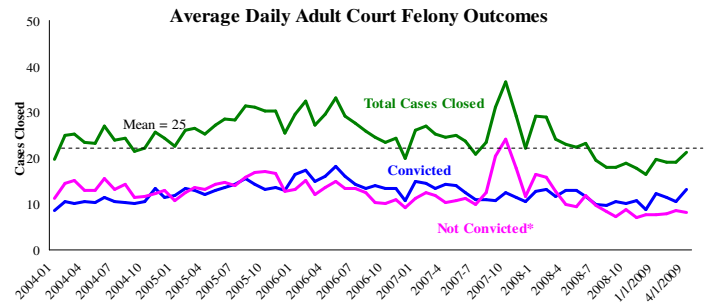
Notes: Compared to April 2008, the total number of Part I index offenses has decreased by 21% in Portland while increasing by 7% in Gresham. Arrests by Portland Police declined for the first time this year, with significant decreases in vehicle (down 29%), person (down 15%) and property (down 18%) arrests. After jail capacity was reduced in March to 1413 beds, the percentage of beds utilized has increased to 91.1%. Average Length of Stay (ALS) in the jails continues to decline.

District Attorney: Adult Caseload



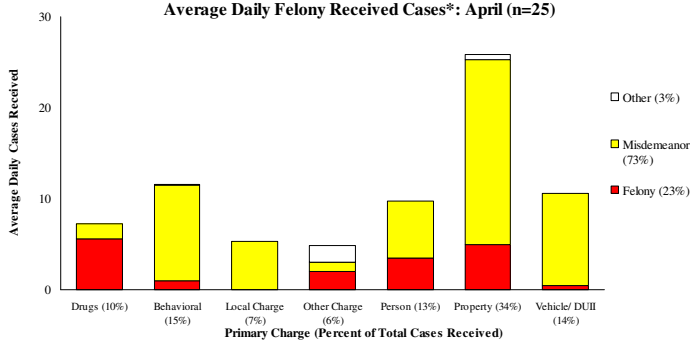
Source: DSS- J. Retrieved Date May 22, 2009

Court Processes: Sentencing Outcomes



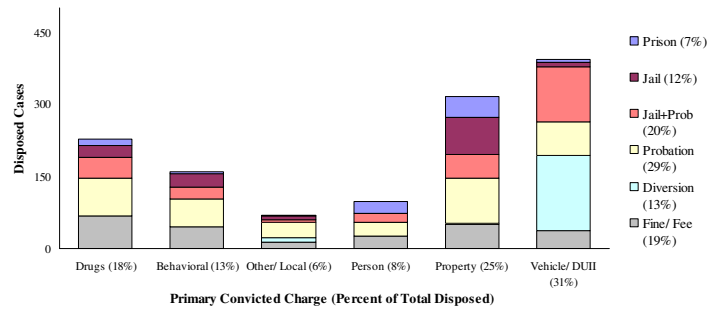
*Includes dismissed cases (typically 'no complainant') and cases found not guilty. Adult felony cases only. Source: Dss-J Court Case Outcome Analysis cube

Average Daily Felony Received Cases*: April (n=25)



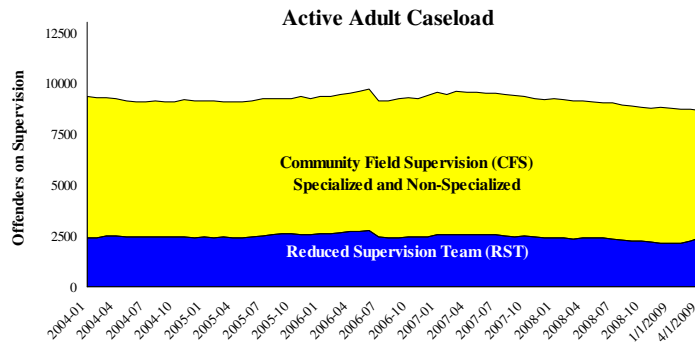
*April had 744 received cases as of 04/30/2009 (24.8/day). 711 cases were resolved in April.

Sentence Type by Primary Conviction*: April 2009



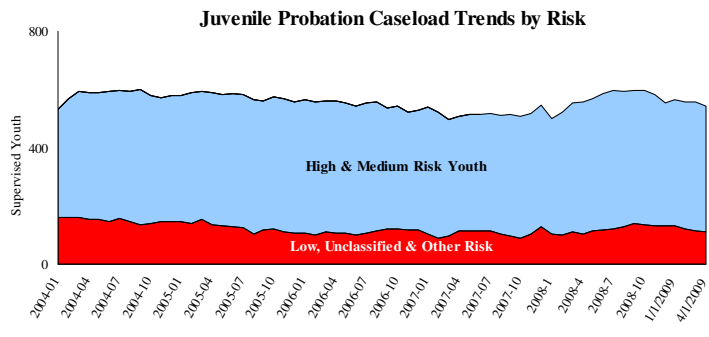
*Sentenced adult felony and misdemeanors primary convictions only. Primary conviction charge is the most serious charge with a conviction and may differ from the original primary charge. April had 1864 convictions; 21% were felonies.

Adult Community Supervision: Caseloads



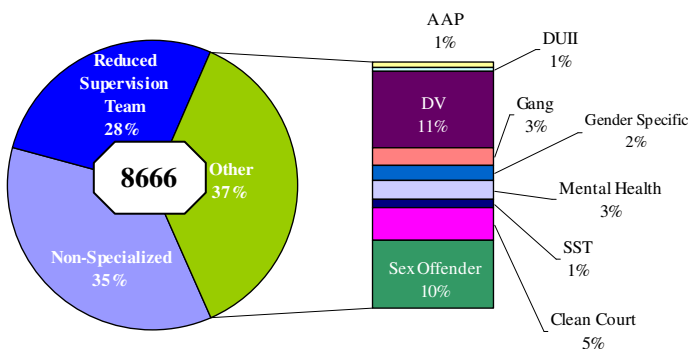
Source: DCJ Research and Evaluation Unit.

Juvenile Community Supervision: Caseloads



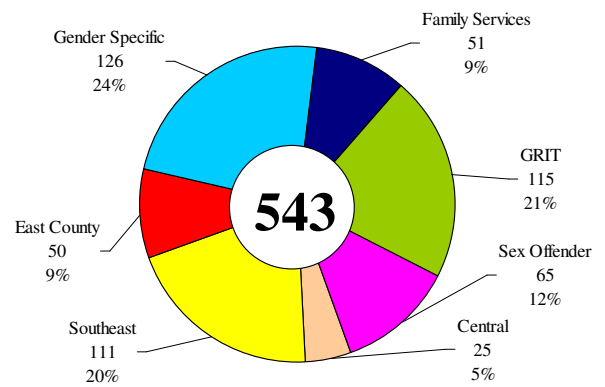
Source: Department of Community Justice Juvenile Services Division.

Adult Active Caseload by Type*: April 2009



*Less than 1% are "other" cases which have been included as non-specialized. Source: DCJ Research and Evaluation Unit.

Juvenile Justice Caseload by Unit*: April 2009.



*The average caseload per counselor was 25.2 for April. Source: Department of Community Justice Juvenile Services Division.

Notes: Data on sentencing outcomes is currently under review and will be updated to more accurately reflect the disposition of cases in future briefs. Average daily adult felony cases received and issued declined for the first time in 2009. The caseloads from the CFS and RST services and the Juvenile Counseling services continue to decline.