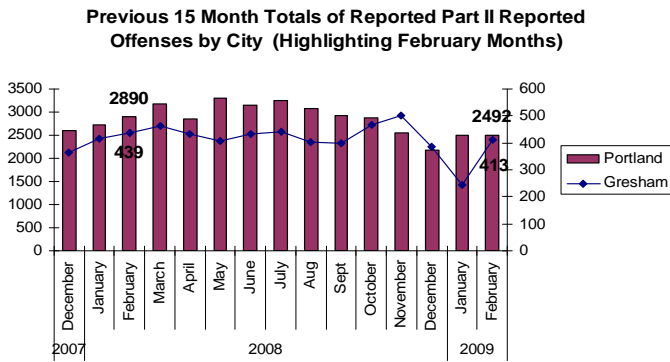
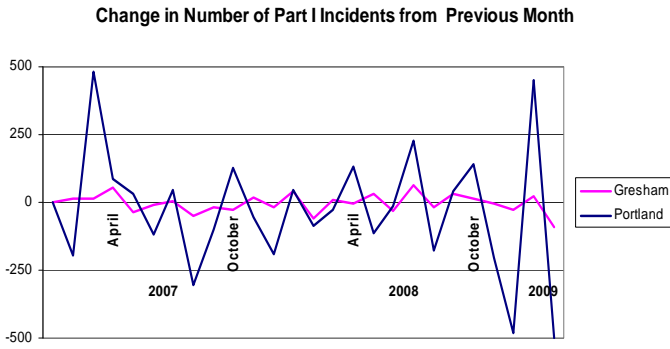
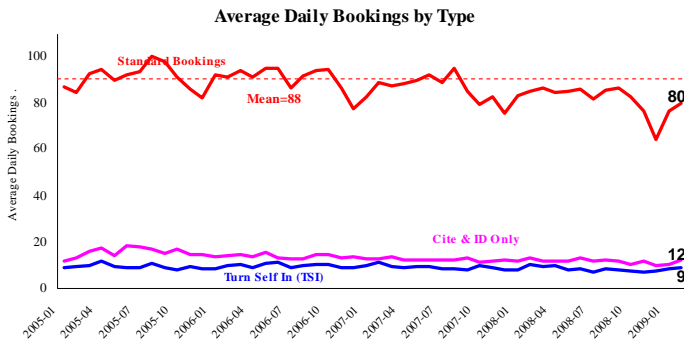


SAFETY PRIORITY BRIEF: FEBRUARY 2009

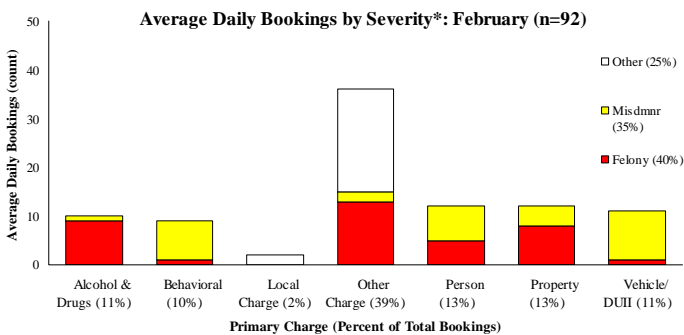
Multnomah County: Reported Index Offenses



Sheriff: Bookings

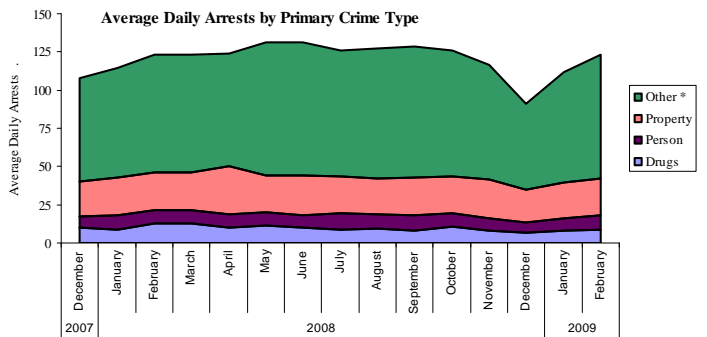
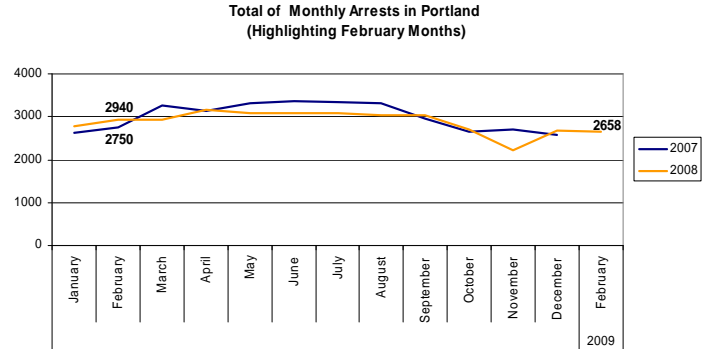


*In-transit bookst are not reported herein and account for ~4% of all bookings. February's average length of stay (ALS) per booking was 17.5 days.



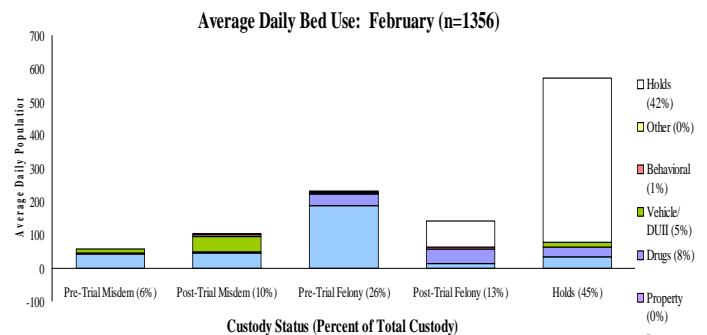
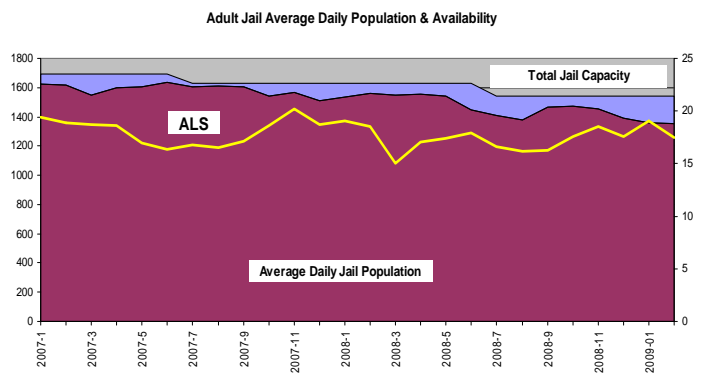
*Excludes Cite & ID. Total of 2584 bookings (92.3/day) through 02/28/2009. Corrections Health reported 474 psych-alerts (16.9/day) for the entire month of February.

Multnomah County: Portland Arrests



*Other largely reflects fugitive/warrant charges, behavioral and vehicular arrests and violations of local ordinances. PPB data only, downloaded March 25, 2009

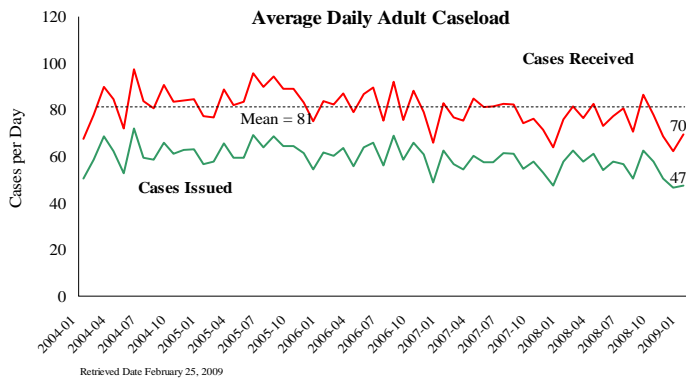
Sheriff: Custody- Adult Jail Beds



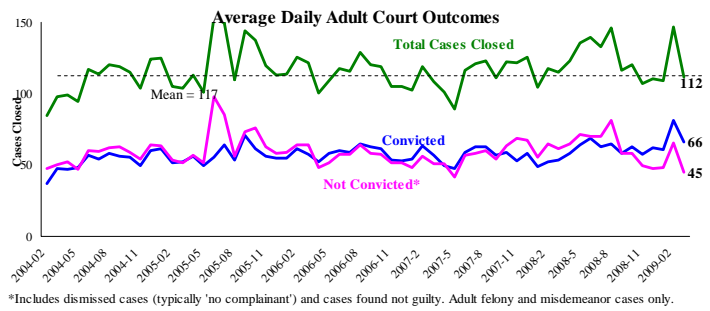
Average Daily Jail System Capacity=1539. Average Daily Population (ADP)=1356; there were 183 available beds on any given day.

Notes: Reported Index Offenses continue to be tracked monthly instead of weekly. The Average Length of Stay (ALS) for February declined 8% to 17 1/2 days. Reported Index Offenses have decreased for the second month in a row for Gresham and Portland. However, Portland Police Arrests have increased from January in the categories Property, Drugs, Person and Vehicle arrests. The Average for Daily Standard Bookings increased 5% to 80 while Total Bookings for the month of February slightly decreased.

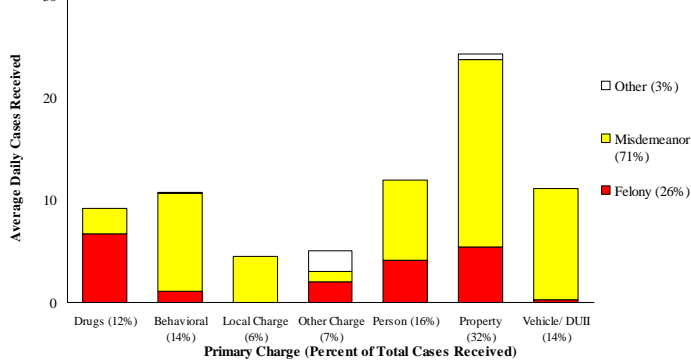
District Attorney: Adult Caseload



Court Processes: Sentencing Outcomes

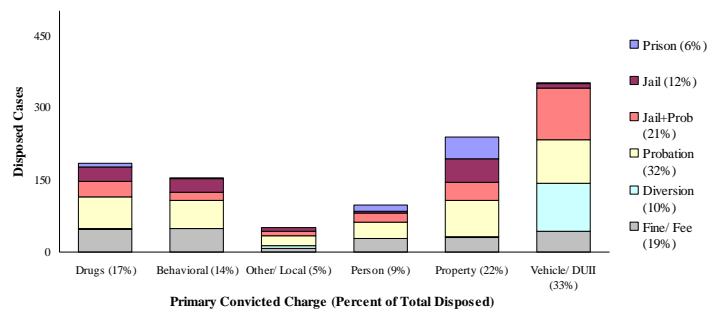


Average Daily Received Cases*: February (n=77)



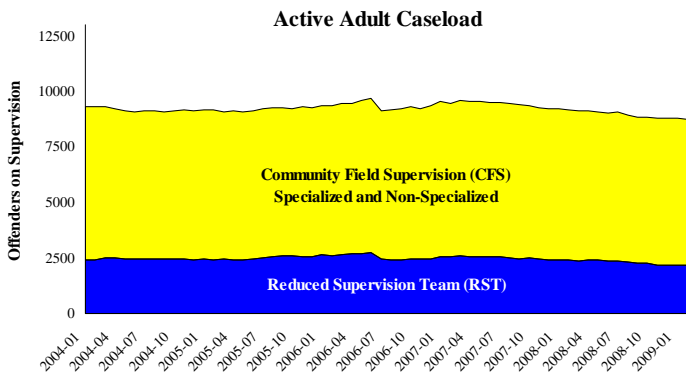
*February had 2154 received cases as of 02/28/2009 (76.9/day). 1992 cases were resolved in February.

Disposition Type by Primary Conviction*: February 2009

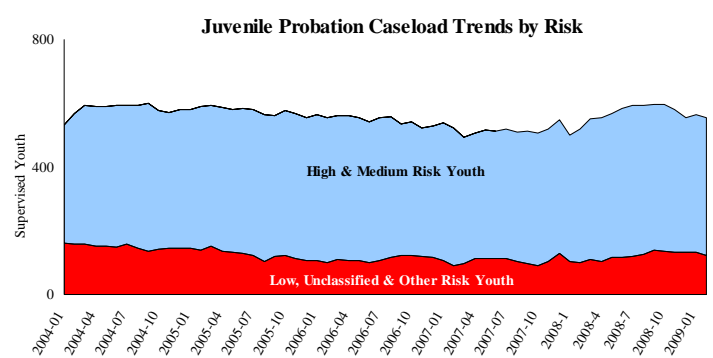


*Sentenced adult felony and misdemeanors primary convictions only. Primary conviction charge is the most serious charge with a conviction and may differ from the original primary charge. February had 1564 convictions; 22% were felonies.

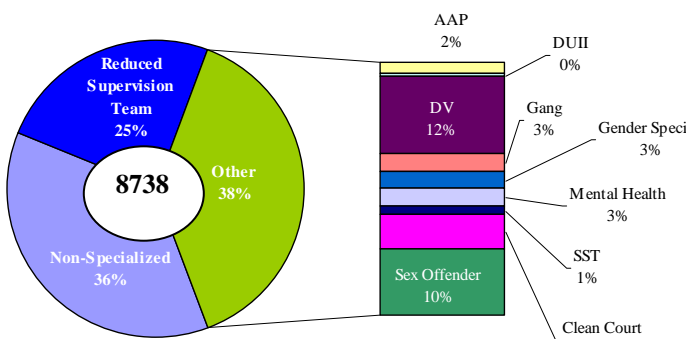
Adult Community Supervision: Caseloads



Juvenile Community Supervision: Caseloads

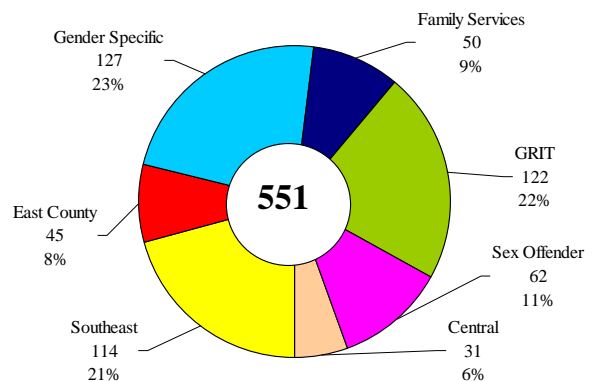


Adult Active Caseload by Type*: February 2009



*Less than 1% are "other" cases which have been included as non-specialized.

Juvenile Justice Caseload by Unit*: February 2009



*The average caseload per counselor was 27.8 for February.

Notes: Data on sentencing outcomes is currently under review and will be updated to more accurately reflect the disposition of cases. The caseloads from the CFS and RST services declined slightly from January to 8738. The number of cases served by the Juvenile Counseling services declined slightly as well.