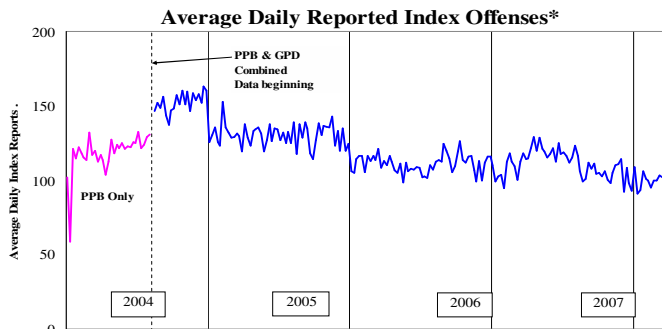


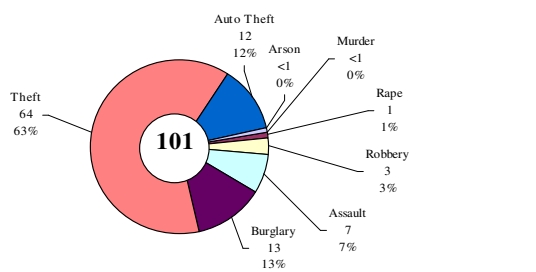
SAFETY PRIORITY BRIEF: FEBRUARY 2008

Multnomah County: Reported Index Offenses



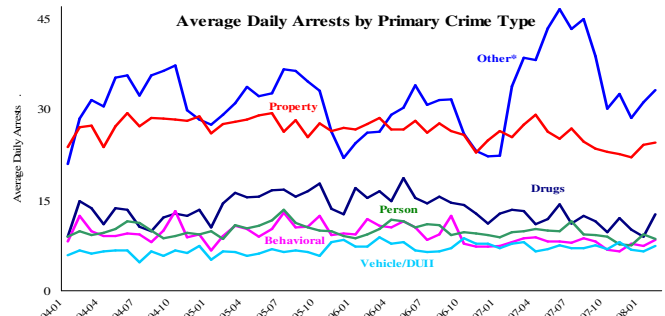
*The graph reflects the combined weekly index offenses data from Portland Police Bureau (PPB) and Gresham Police Dept (GPD), beginning 8/2004 (line in blue). According to LEDS (2005) data PPB and GPD account for 95% of all offenses county-wide. Index offenses account for about half of all reported offenses.

Average Daily Reported Index Offenses*



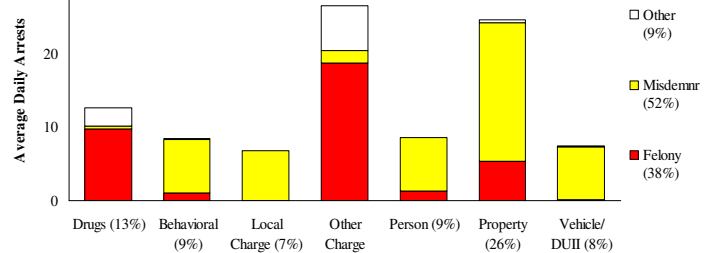
*Portland and Gresham, combined 4-week moving average for the week ending 3-1-08.

Multnomah County: Portland Arrests



*Other largely reflects fugitive/warrant charges and local ordinances (DFZ/PFZ). PPB data only, downloaded 3/21/08.

Average Daily Arrests*: February (n=95)

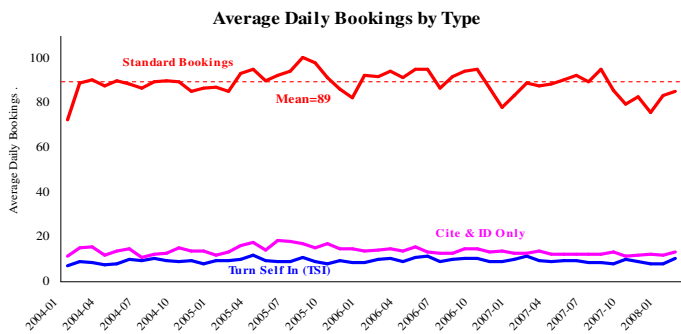


Local charges include drug- and prostitution-free zone violations.

*There were 2746 arrests in February.

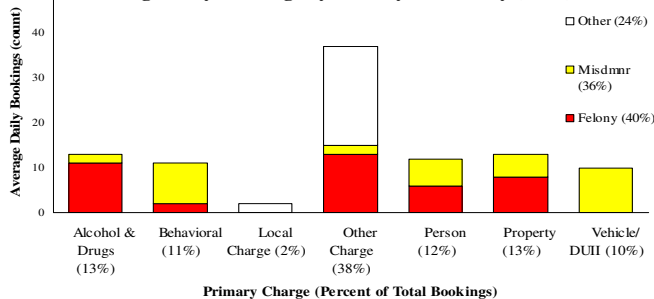
From now on, warrants previously categorized as 'other' will be listed under felony arrests.

Sheriff: Bookings



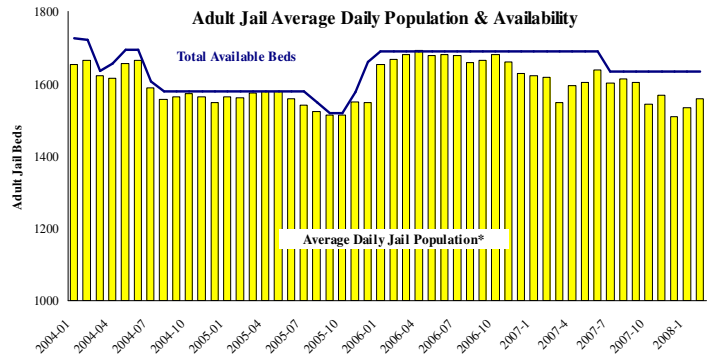
*In-transit bookings are not reported herein and account for ~4% of all bookings. February's average length of stay (ALS) per booking was 18.51 days.

Average Daily Bookings by Severity*: February (n=99)



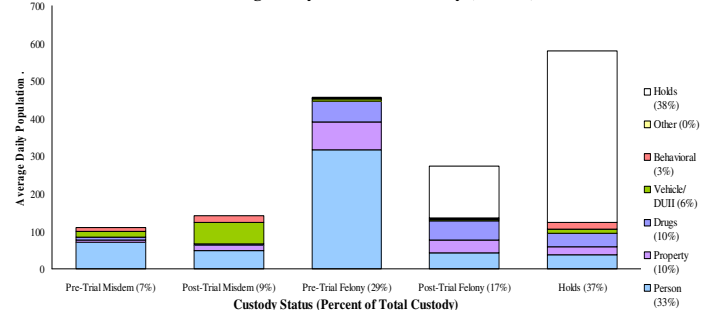
*Excludes Cite & ID. Total of 2857 bookings (98.5/day) through 2/29/08. Corrections Health reported 466 psych-alerts (16.1/day) for the entire month of February.

Sheriff: Custody- Adult Jail Beds



*Excludes in-transit custody classifications. The MCSO reported 0 matrix releases for February 2008.

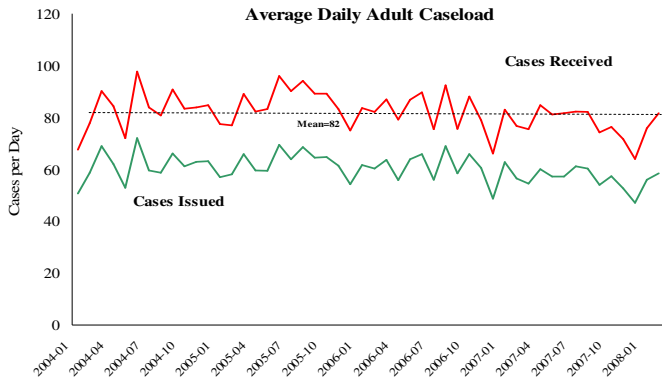
Average Daily Bed Use: February (n=1559)



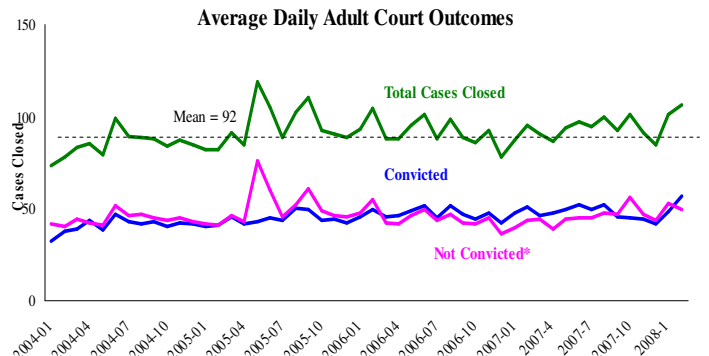
Average Daily Jail System Capacity=1633. Average Daily Population (ADP)=1559; there were 74 available beds on any given day.

Notes: Average Daily Reported Index Offenses increased 14.8% from 88 last month to 101 per day. This increase was due to a 16% increase in Thefts (from 55 to 64) and a 40% increase in Assaults (from 5 to 7). Average Daily Arrests experienced a significant increase in the Drugs category with 13 arrests per day; the highest number since June 2007. The jail bed utilization rate (95.5%) continued increasing from its December low. This increase was due to a rise in holds for felonies.

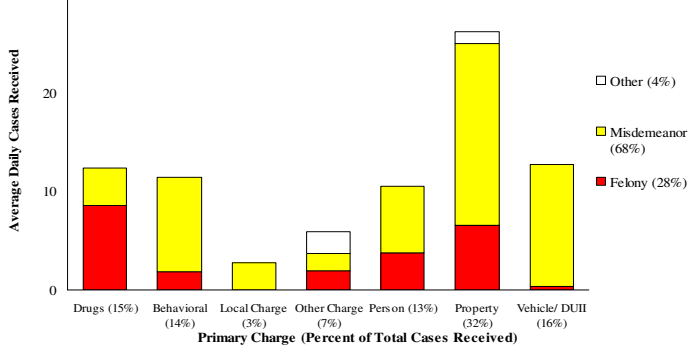
District Attorney: Adult Caseload



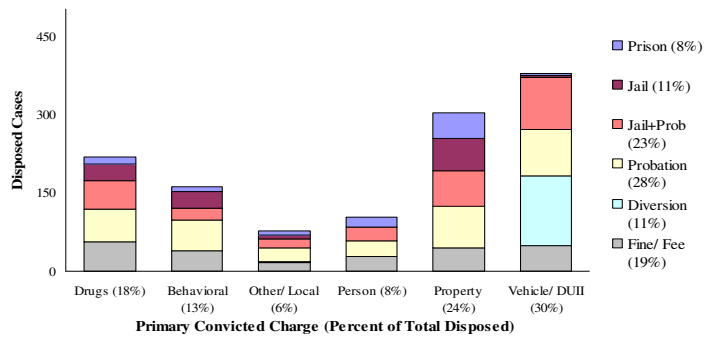
Court Processes: Sentencing Outcomes



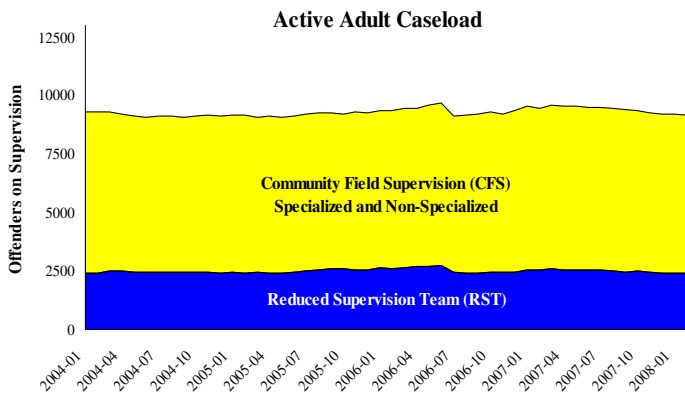
Average Daily Received Cases*: February (n=82)



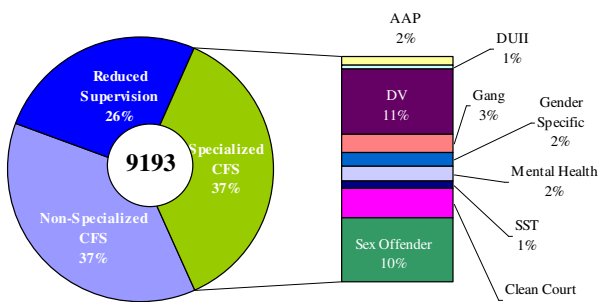
Disposition Type by Primary Conviction*: February 2008



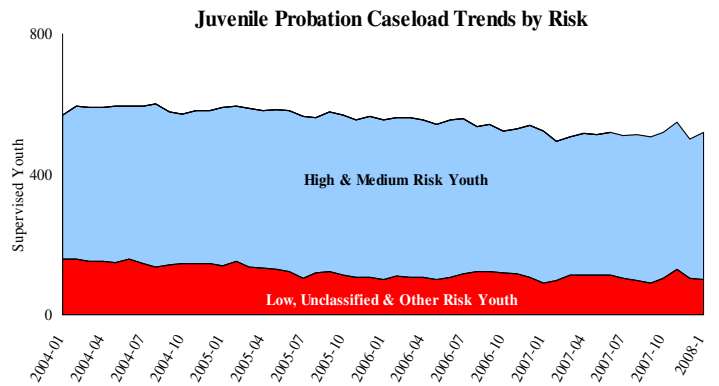
Adult Community Supervision: Caseloads



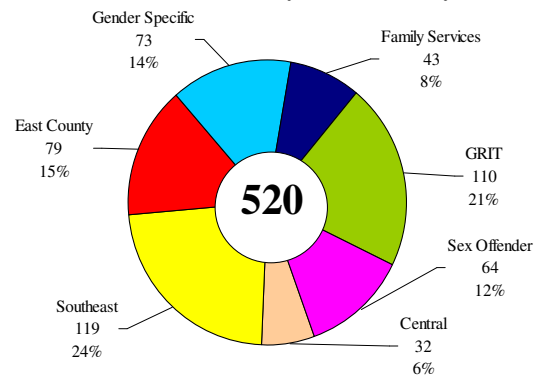
Adult Active Caseload by Type*: February 2008



Juvenile Community Supervision: Caseloads



Juvenile Justice Caseload by Unit*: February 2008



Notes: Average Daily Received Cases continued to increase from a low in December to 82 average cases in February. This increase was driven by an increase in drug related cases. Average Daily Adult Court Outcomes experienced an 8% decrease in convictions from January to February. This decrease was driven by a drop in the Dismissed-Discharged categories for both misdemeanor and felony cases. Juvenile Justice Caseloads experienced a 4% increase from January to February. This was due to an increase in the number of cases in the Gender Specific (67 in January to 73 in February) and Southeast units (116 to 119).