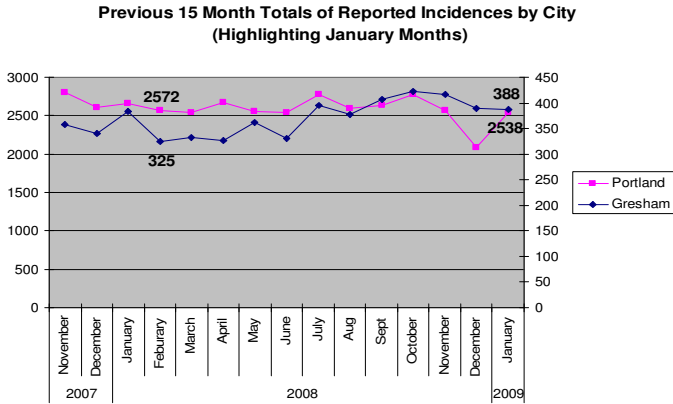
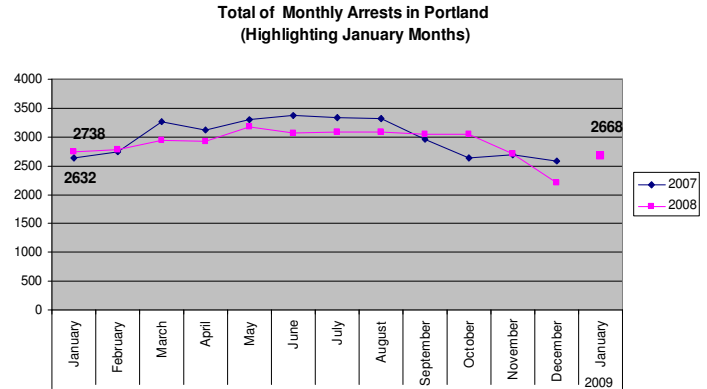


SAFETY PRIORITY BRIEF: JANUARY 2009

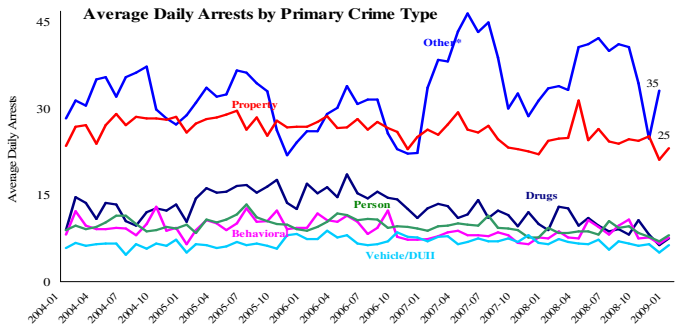
Multnomah County: Reported Index Offenses



Multnomah County: Portland Arrests

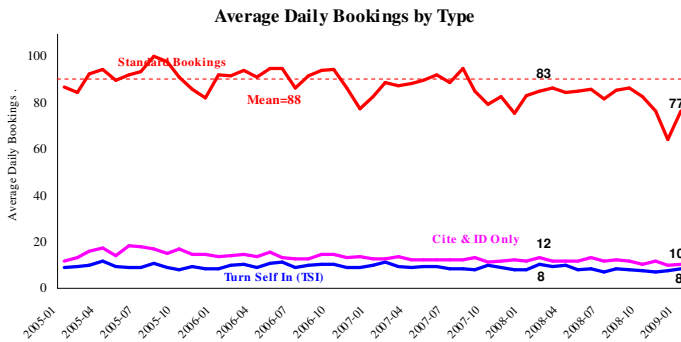


Missing Data



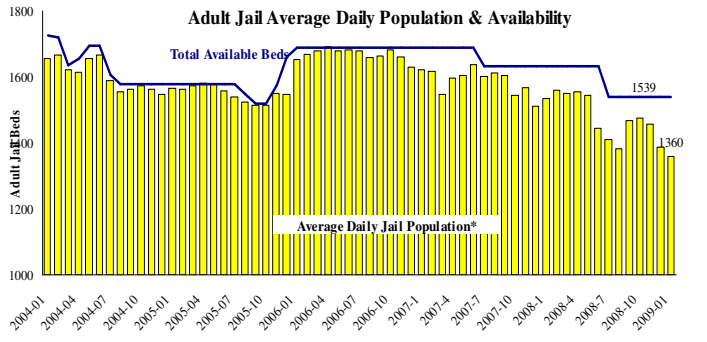
*Other largely reflects fugitive/warrant charges and local ordinances (DFZ/PFZ). PPB data only, downloaded February 24, 2009

Sheriff: Bookings

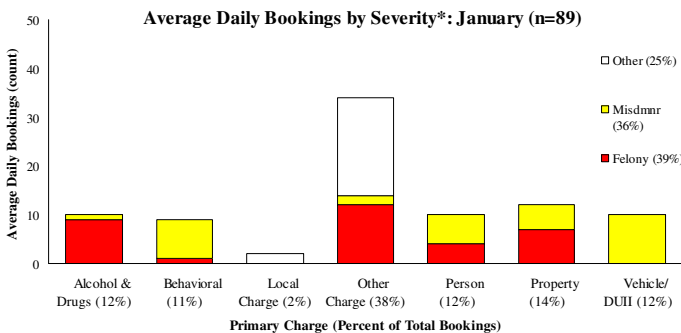


*In-transit bookinist are not reported herein and account for ~4% of all bookings. January's average length of stay (ALS) per booking was 19.02 days.

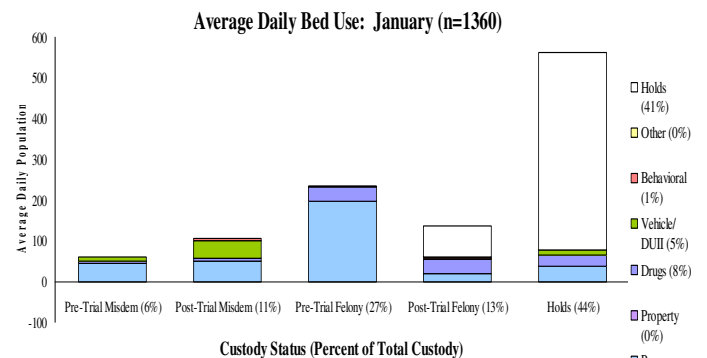
Sheriff: Custody- Adult Jail Beds



*Excludes in-transit custody classifications. The MCSO reported 0 matrix releases for January 2009.



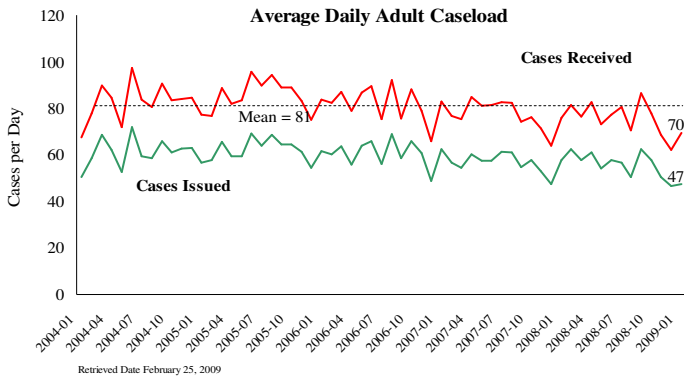
*Excludes Cite & ID. Total of 2751 bookings (88.7/day) through 01/31/2009. Corrections Health reported 493 psych-alerts (15.9/day) for the entire month of January.



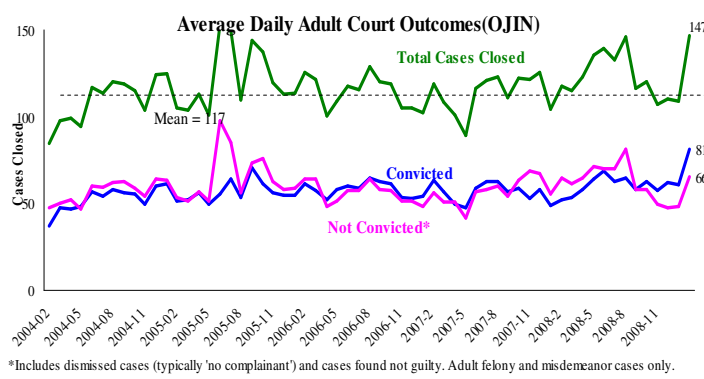
Average Daily Jail System Capacity=1539. Average Daily Population (ADP)=1360; there were 179 available beds on any

Notes: Reported Index Offenses are now tracked monthly instead of weekly. Overall totals of Reported Index Offenses and Portland Police Arrests are down from this same time last year. Average length of stay (ALS) for January increased to 19.02 days, the highest level in a year. Total Booking increased to 2751 for January, and ALS increased, however Average Daily Population (ADP) declined to 1360, its lowest level in the past 18 months.

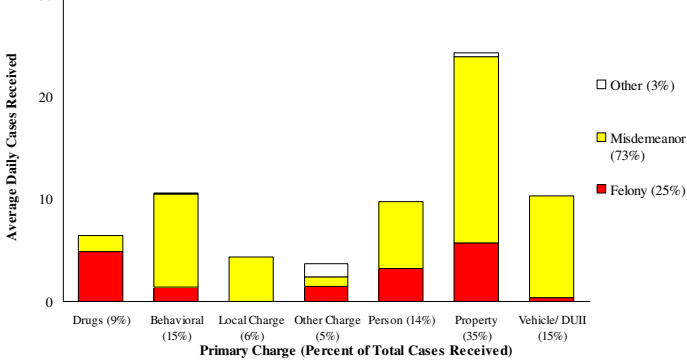
District Attorney: Adult Caseload



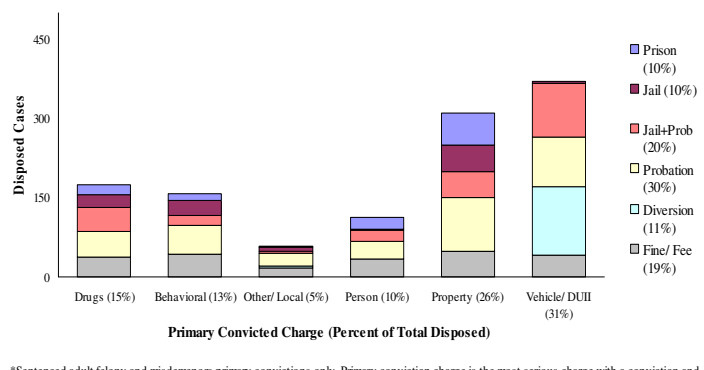
Court Processes: Sentencing Outcomes



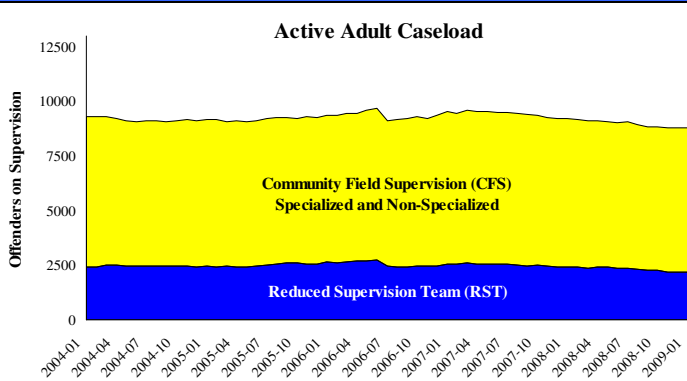
Average Daily Received Cases*: January (n=70)



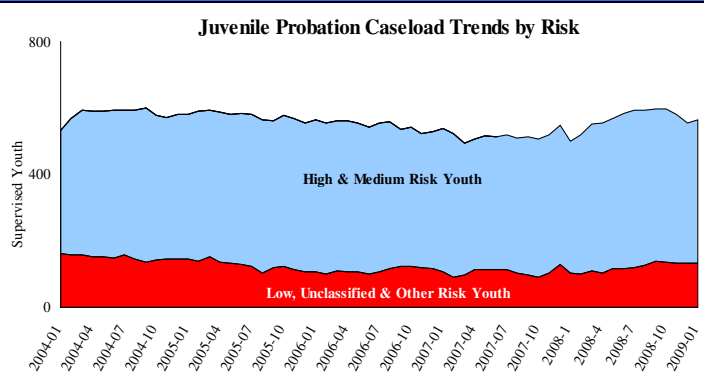
Disposition Type by Primary Conviction*: January 2009



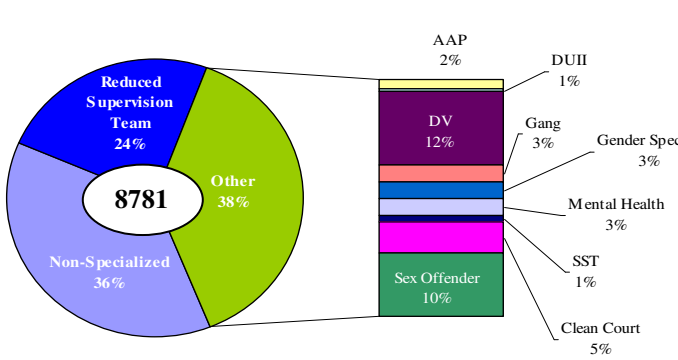
Adult Community Supervision: Caseloads



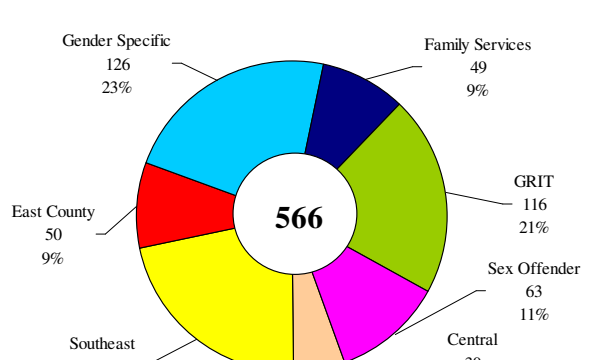
Juvenile Community Supervision: Caseloads



Adult Active Caseload by Type*: January 2009



Juvenile Justice Caseload by Unit*: January 2009



Notes: For Average Daily Adult caseloads, Cases Received increased to 70, the first increase since September. The DA averaged for 2008, 123 cases a month with Court Processing having a 50% conviction rate. Starting 2009, total cases and percent convicted increased 3%. Adult Active Caseload dropped to 8,781, continuing the decline of the past four months. Also, Juvenile Justice Caseload by Unit increased for the first time in four months to a total of 566. This result increased the average caseload per counselor to 25.7. CFS and RST Adult Caseloads continue their two month decline.