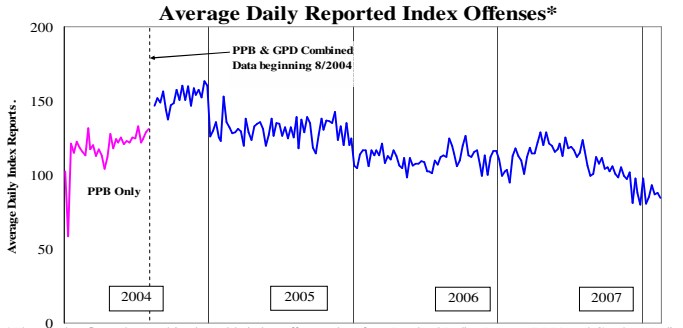


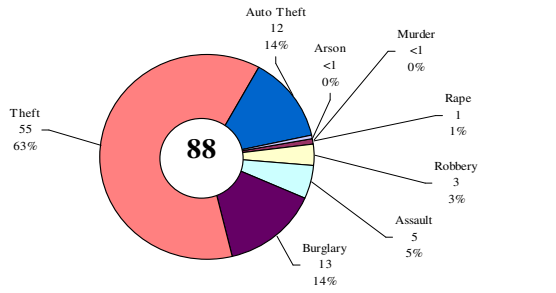
# SAFETY PRIORITY BRIEF: JANUARY 2008

## Multnomah County: Reported Index Offenses



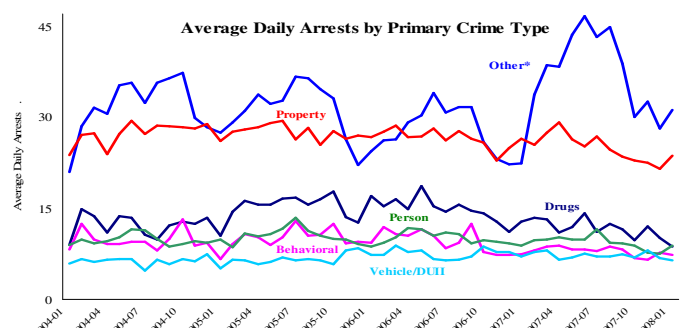
\*The graph reflects the combined weekly index offenses data from Portland Police Bureau (PPB) and Gresham Police Dept (GPD), beginning 8/2004 (line in blue). According to LEDS (2005) data PPB and GPD account for 95% of all offenses county-wide. Index offenses account for about half of all reported offenses.

### Average Daily Reported Index Offenses\*



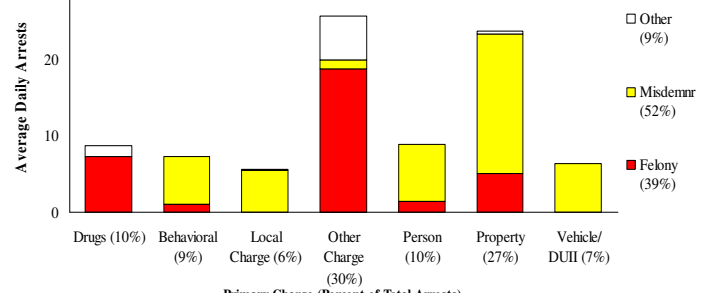
\*Portland and Gresham, combined 4-week moving average for the week ending 2-2-08.

## Multnomah County: Portland Arrests



\*Other largely reflects fugitive/warrant charges and local ordinances (DFZ/PFZ). PPB data only, downloaded 2/15/08.

### Average Daily Arrests\*: January (n=86)

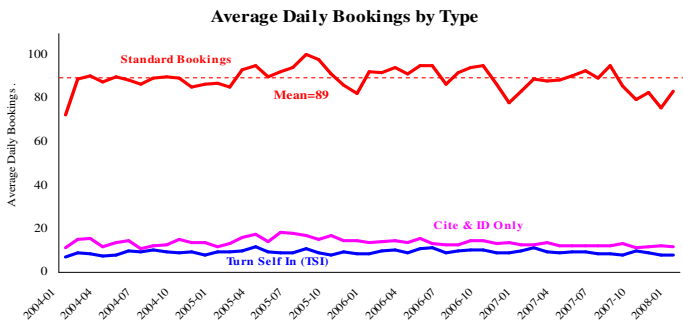


Local charges include drug- and prostitution-free zone violations.

\*There were 2668 arrests in January.

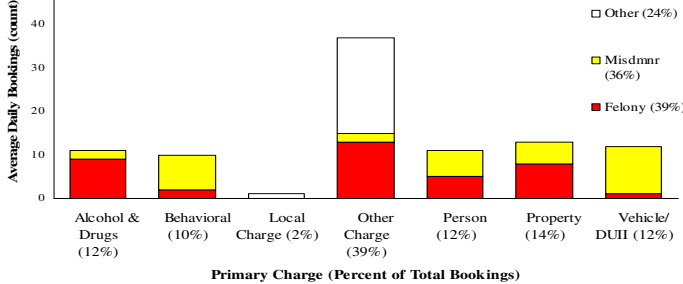
From now on, warrants previously categorized as 'other' will be listed under felony arrests.

## Sheriff: Bookings



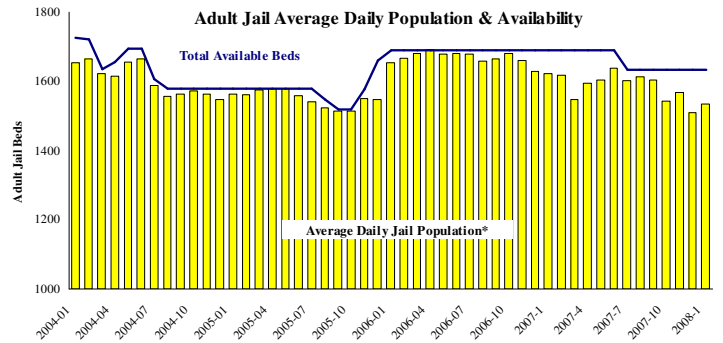
\*In-transit bookings are not reported herein and account for ~4% of all bookings. January's average length of stay (ALS) per booking was 19.04 days.

### Average Daily Bookings by Severity\*: January (n=94)



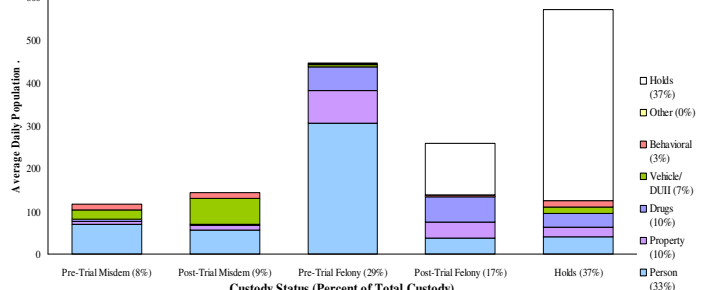
\*Excludes Cite & ID. Total of 2923 bookings (94.3/day) through 1/31/08. Corrections Health reported 493 psych-alerts (15.9/day) for the entire month of January.

## Sheriff: Custody- Adult Jail Beds



\*Excludes in-transit custody classifications. The MCSO reported 0 matrix releases for January 2008

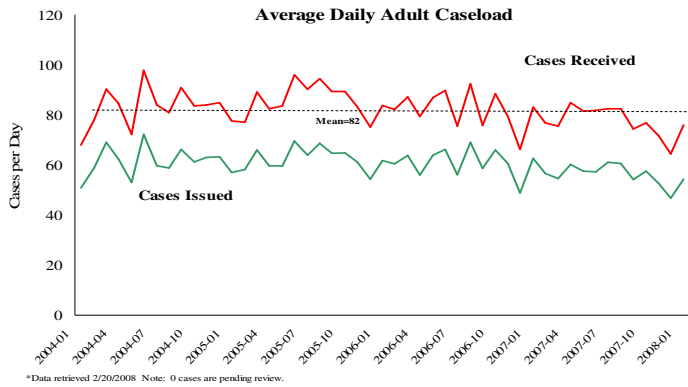
### Average Daily Bed Use: January (n=1534)



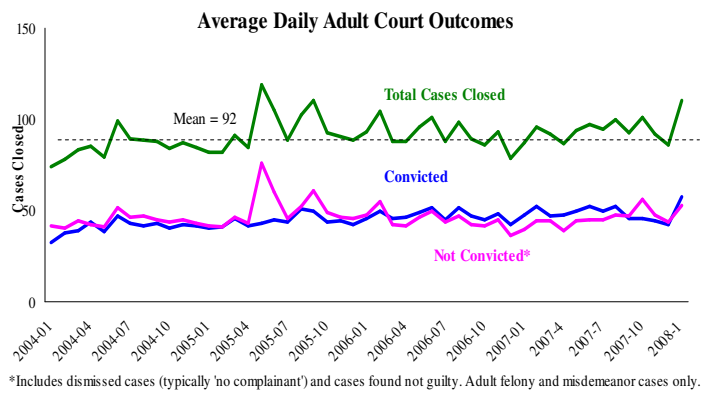
Average Daily Jail System Capacity=1633. Average Daily Population (ADP)=1534; there were 99 available beds on any given day.

**Notes:** Average Daily Reported Index Offenses experienced a 33% increase in the Auto Theft Category (from 9 in December to 12 in January) with no significant change in other categories. Average Daily Standard Bookings rebounded from the December low driven by an increase in the Other category. The jail bed utilization rate also increased from its December low. This was driven by an increase in Misdemeanor charges.

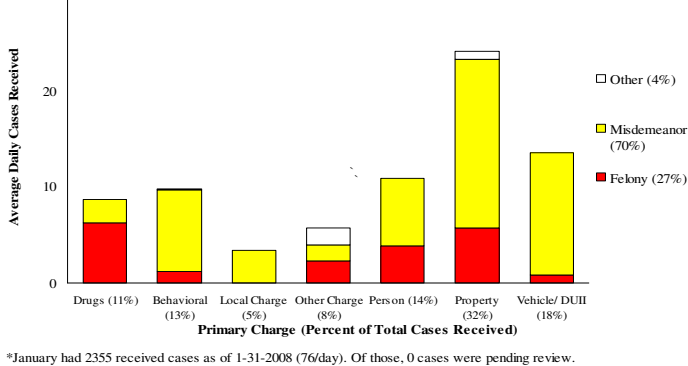
## District Attorney: Adult Caseload



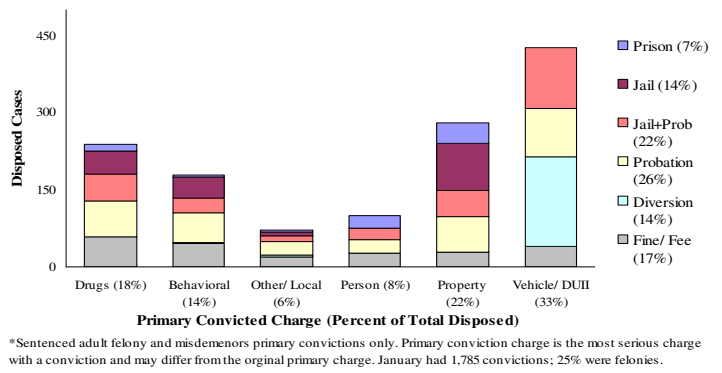
## Court Processes: Sentencing Outcomes



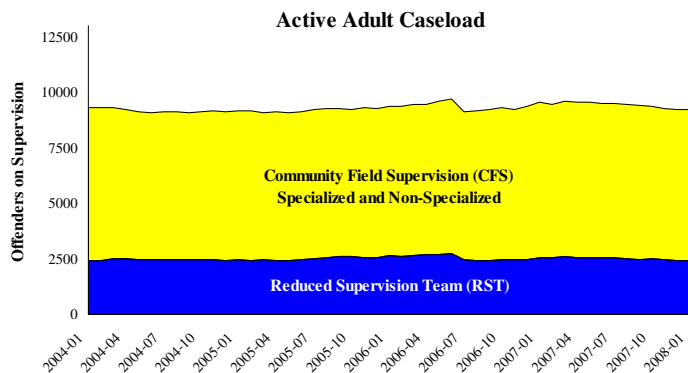
### Average Daily Received Cases\*: January (n=76)



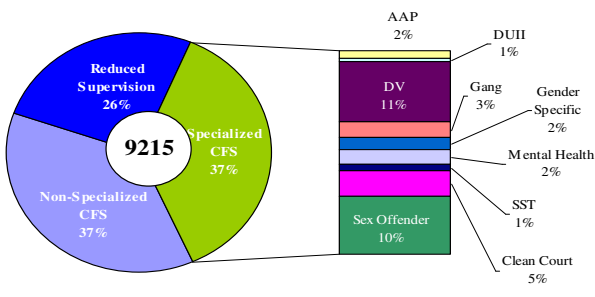
### Disposition Type by Primary Conviction\*: January 2008



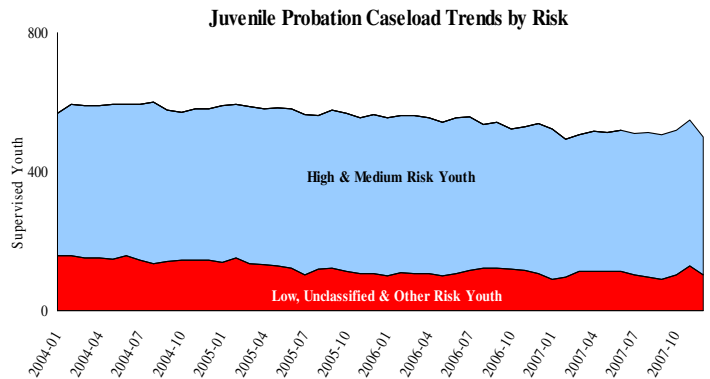
## Adult Community Supervision: Caseloads



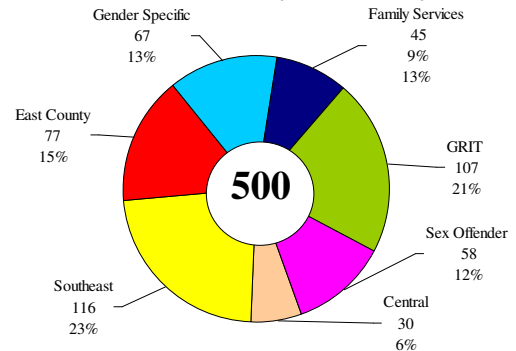
### Adult Active Caseload by Type\*: January 2008



## Juvenile Community Supervision: Caseloads



### Juvenile Justice Caseload by Unit\*: January 2008



**Notes:** Average Daily Received Cases also rebounded from a low in December; from 64 average cases in that month to 76 in January. There was a proportional shift from felony cases to misdemeanor cases from December to January. Average Daily Adult Court Outcomes experienced a 15% increase in convictions from December to January. This was almost entirely driven by an increase in the Conviction and Dismissed-Discharged categories for both misdemeanor and felony cases. Juvenile Justice Caseloads continue to be in flux with a decrease of 9.4% from December to January. This change was largely due to a decrease in the number of Family Services cases (from 82 in December to 45 in January).