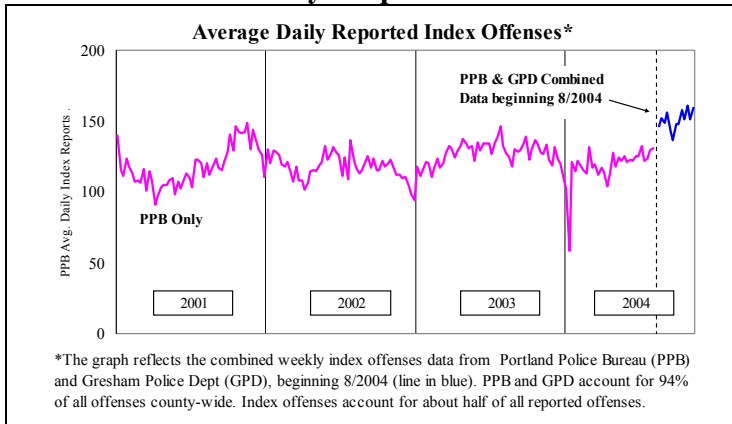
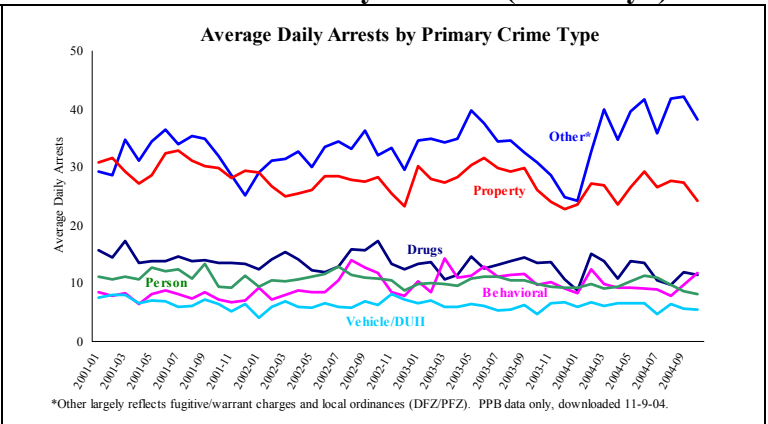


# PUBLIC SAFETY BRIEF: OCTOBER 2004

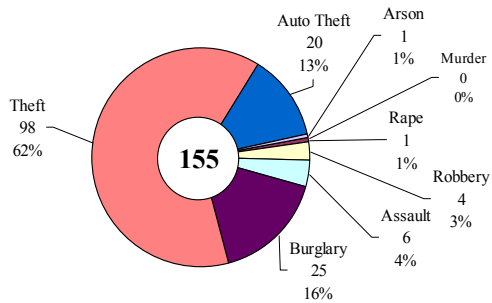
## Multnomah County: Reported Index Offenses



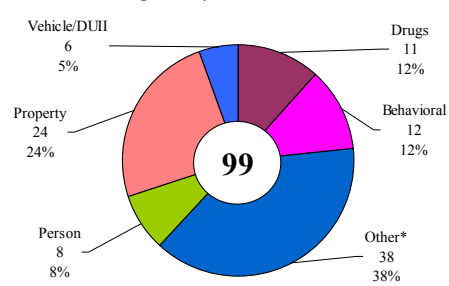
## Multnomah County: Arrests (PPB only\*)



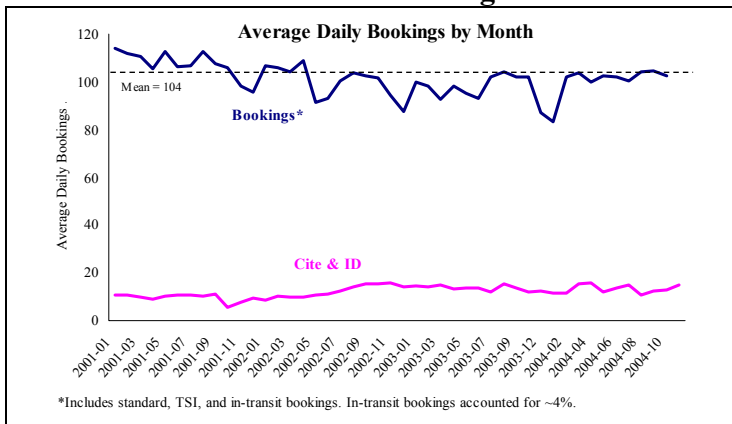
### Average Daily Reported Index Offenses\*



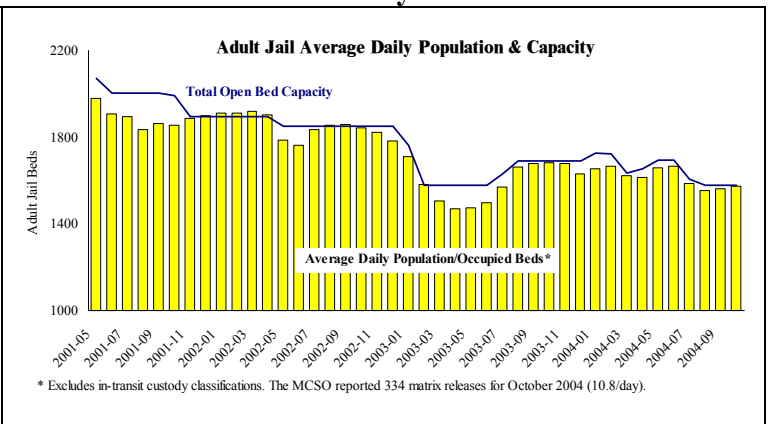
### Average Daily Arrests: October 2004



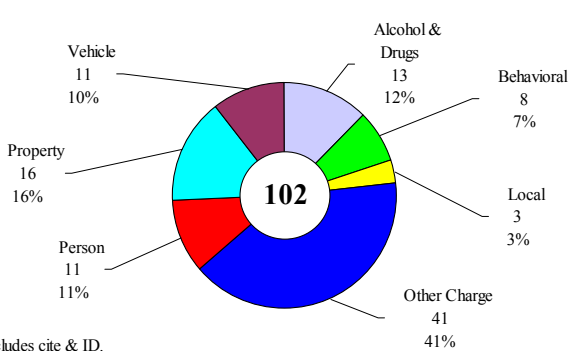
## Sheriff: Bookings



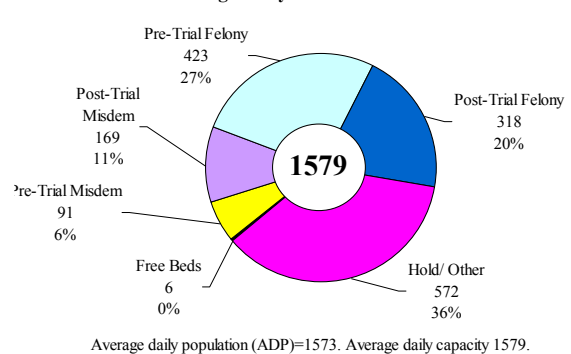
## Sheriff: Custody- Adult Jail Beds



### Average Daily Bookings\*: October 2004

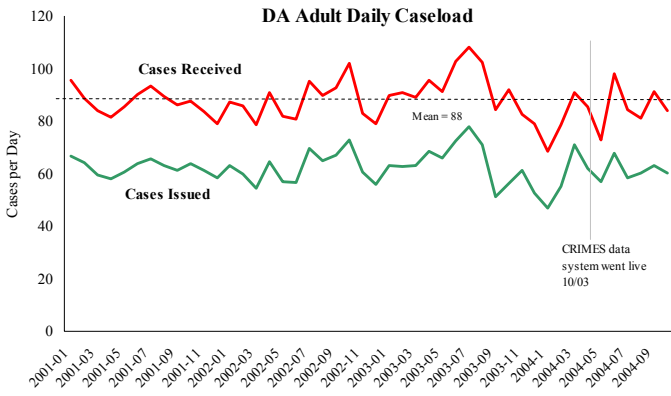


### Average Daily Bed Use: October 2004



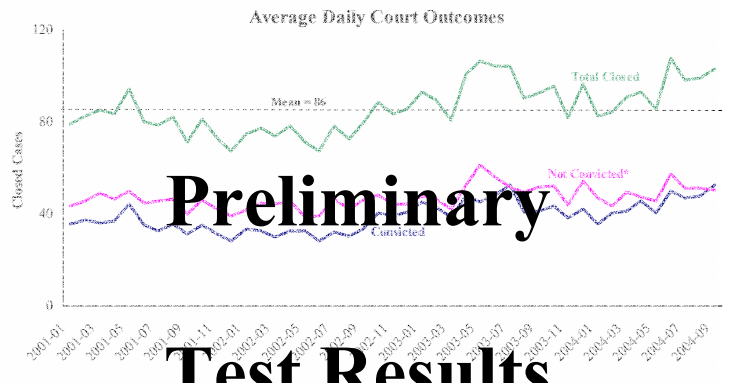
**Notes.** The Reported Index Offenses graph reflects newly combined data from Portland Police Bureau (PPB) and the Gresham Police Department (GPD), starting August 2004 (see blue line), with GPD accounting for 10% of the total reported offenses. GPD and PPB report year-to-date offenses at 8% and 4% lower than 2003, respectively. Gresham reports a lower proportion of violent crimes and a greater proportion of auto theft than does Portland. Average daily matrix releases were unchanged.

### District Attorney: Adult Caseload



\*Through 10-31-2004. Note: many cases received recently are pending review.

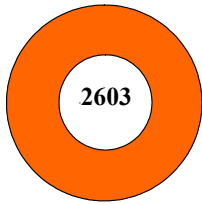
### Court Processes: Sentencing Outcomes



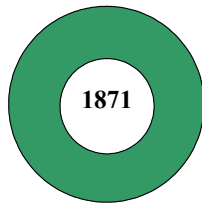
\*Includes dismissed cases (typically for medical reasons)

**Preliminary Test Results**

### DA Adult Caseload: October 2004



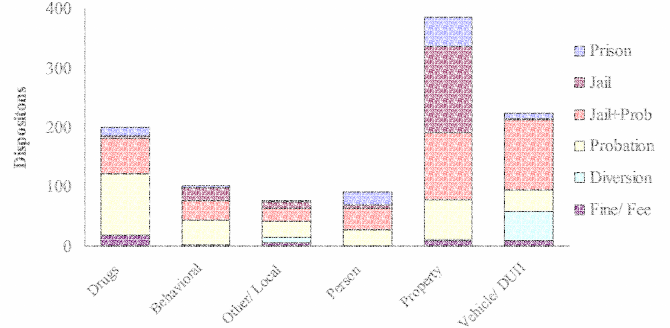
Cases Received



Cases Issued

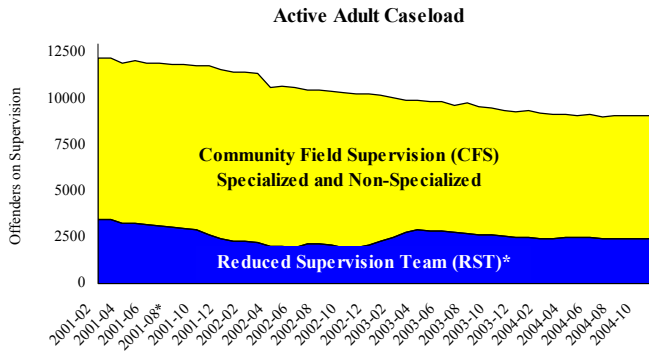
CRIMES data through 10/31/04. Detail currently unavailable.

### Disposition Type by Primary Conviction\*: Oct 2004



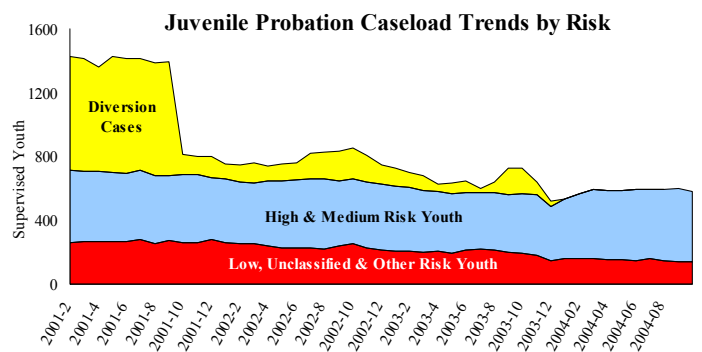
\*Primary conviction charge is the most serious charge with a conviction and may differ from the primary charge. Approximately 3/4 of convictions are for misdemeanors.

### Adult Community Supervision: Caseloads

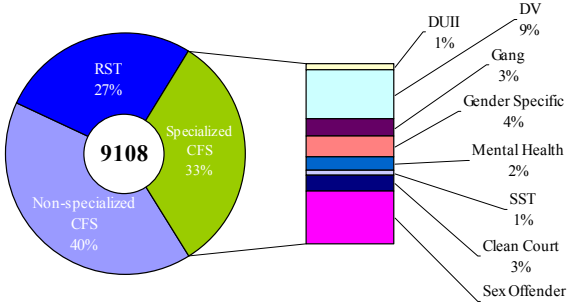


\*Casebank is now called Reduced Supervision Team (RST).

### Juvenile Community Supervision: Caseloads

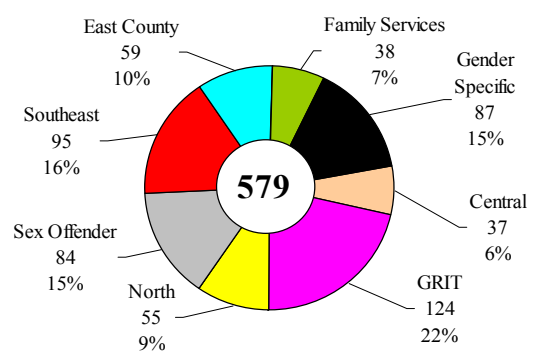


### Adult Active Caseload by Type\*: October 2004



\*Less than 1% are "other" cases which have been included as non-specialized.

### Juvenile Justice Caseload by Unit: September 2004



**Notes.** The DA adult caseload declined in both the number of cases received (by 137) and the number of cases issued (by 18). Detailed DA data remains unavailable in DSS-J data warehouse. The active adult supervision caseload remains stable. The juvenile caseload declined due to reduced high- and medium-risk cases.