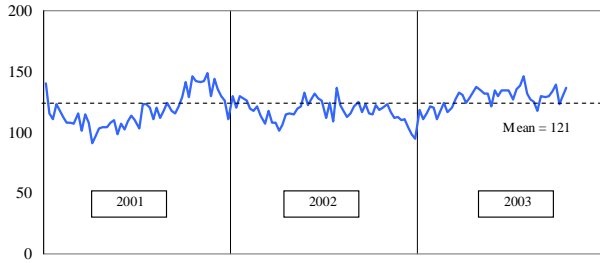


PUBLIC SAFETY MONTHLY BRIEF: OCTOBER 2003

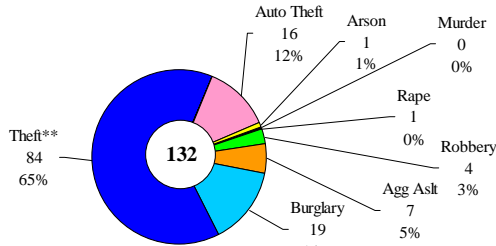
Portland Police: Reported Offenses

Average Daily Reported Index Crimes



*PPB weekly index offense reports through 10-18-03. Index crimes account for half of all reported crime.

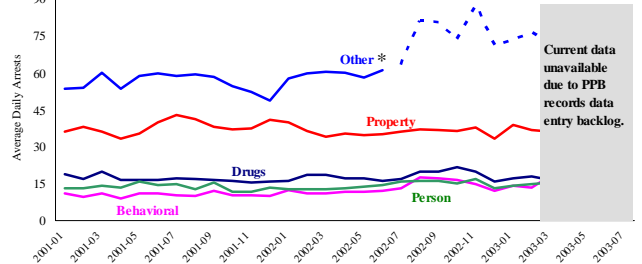
Average Daily Reported Index Offenses*



*City of Portland, 4-week moving average for week ending 10/18/2003

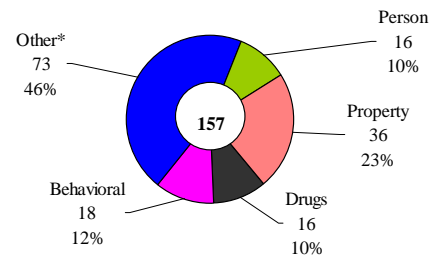
Multnomah County: Arrests (PPB, MCSO, & Fairview)

Average Daily Arrests by Primary Crime Type



*Other includes vehicle (DUI), local ordinances, and fugitive/warrant charges. Increase is due to change in PPB coding method and does not reflect an increase in these types of arrests. Data was downloaded 11/8/03.

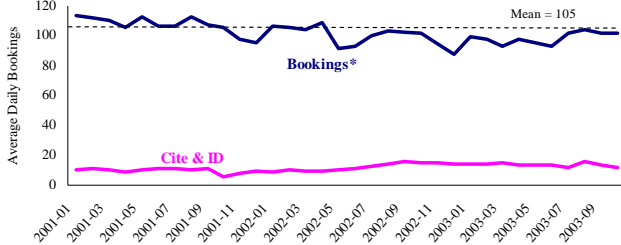
Average Daily Arrests: March 2003



*Includes vehicle (DUI), local ordinances, and fugitive/warrant charges.

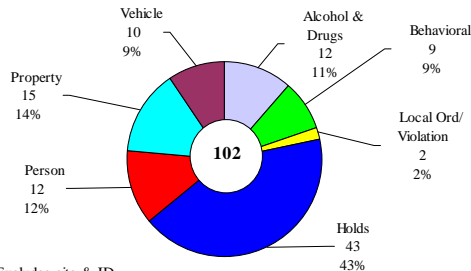
Sheriff: Bookings

Average Daily Bookings by Month



*Includes in-transit bookings, which accounted for ~4%.

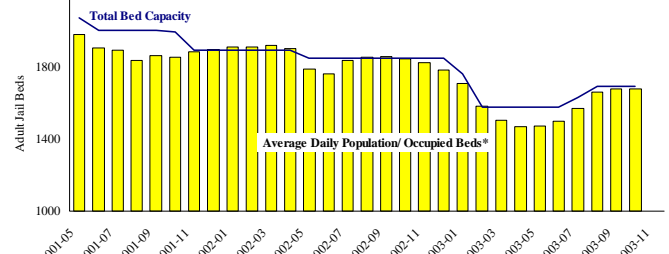
Average Daily Bookings*: October 2003



*Excludes cite & ID.

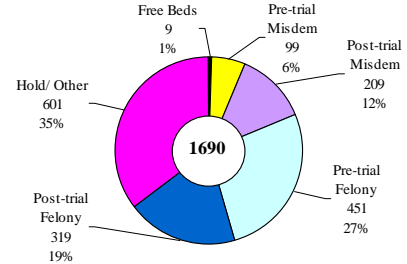
Sheriff: Custody- Adult Jail Beds

Adult Jail Average Daily Population & Capacity



* Excludes in-transit custody classifications. Note, www.inmatereleases.org reported 242 matrix releases for October 2003.

Average Daily Bed Use: October 2003

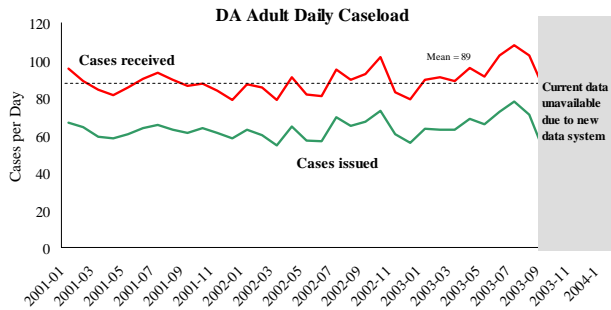


Average daily population (ADP)=1681. Average daily capacity 1690.

Notes:

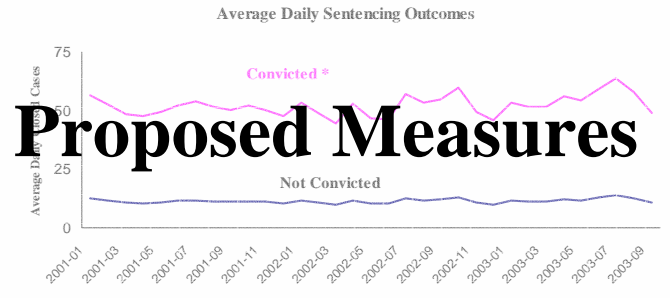
There were no changes in the average daily number of reported index crimes compared to September. The daily average remains above the multiyear average due to an increase in reported property crimes. Average daily bookings compared to the *revised* September data (103) showed little change. There was an increase in the proportion of pre-trial felony inmates; the largest increase for this group was observed in serious person crimes (e.g. homicide, weapons charges, assault).

District Attorney: Adult Caseload



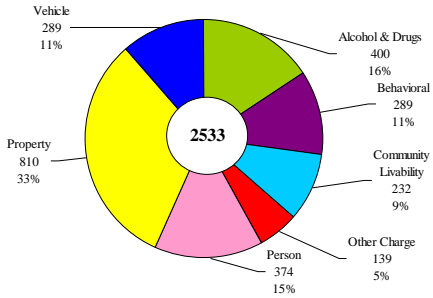
*Data extracted 11-18-03. Note: many cases received recently are pending review.

Court Processes: Sentencing Outcomes



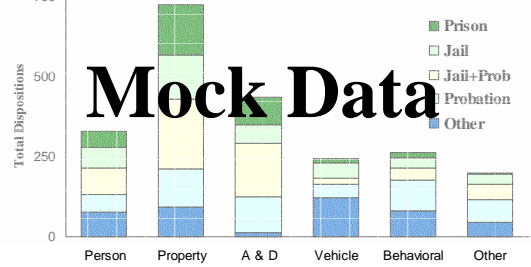
* Includes guilty plea, guilty by trial, diversion, etc. Felony and misdemeanor outcomes only.

Received Cases*: September 2003



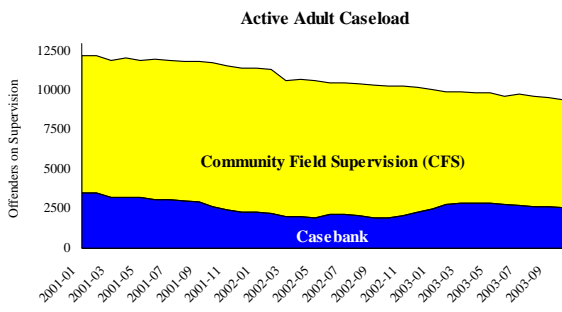
*As of 11-18-03. Sept had 1540 cases issued, 563 rejected, and 430 pending review.

Dispositions Type by Primary Charges: Mock.... 2003



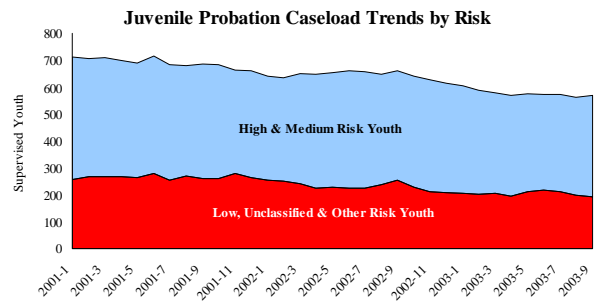
Mock Data

Adult Community Supervision: Caseloads

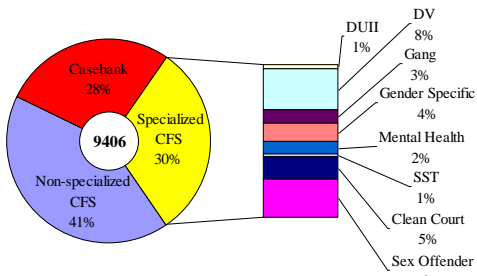


*August 2001 data extrapolated based on prior and subsequent months.

Juvenile Community Supervision: Caseloads

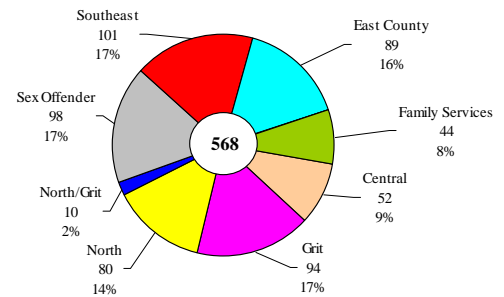


Adult Active Caseload by Type*: October 2003



*less than 1% are "other" cases which have been included as non-specialized

Juvenile Justice Caseload by Unit: September 2003



Notes:

There was a notable decrease in adult supervision cases (368) due to a reduction in the casebank caseloads. Juvenile supervision high and medium risk caseload increased, driven by an increase in medium risk cases while a corresponding decrease in low/undefined risk cases, resulted in a little change in overall caseload.