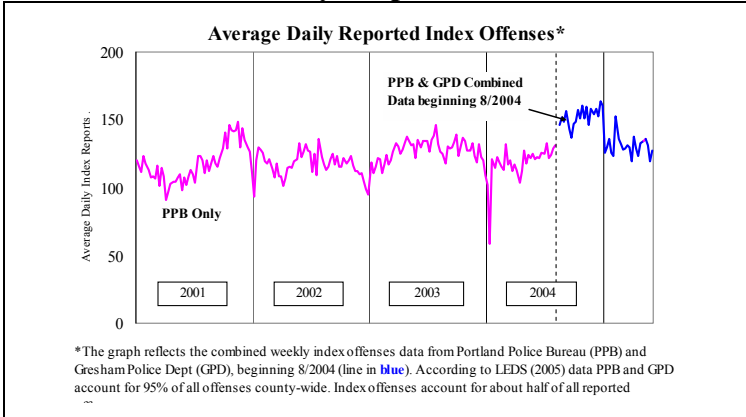
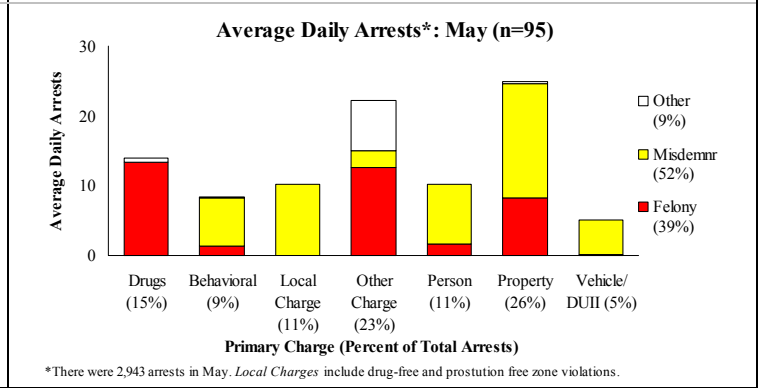
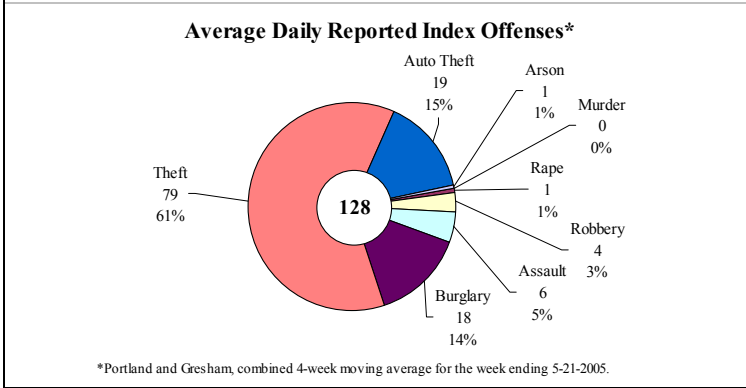
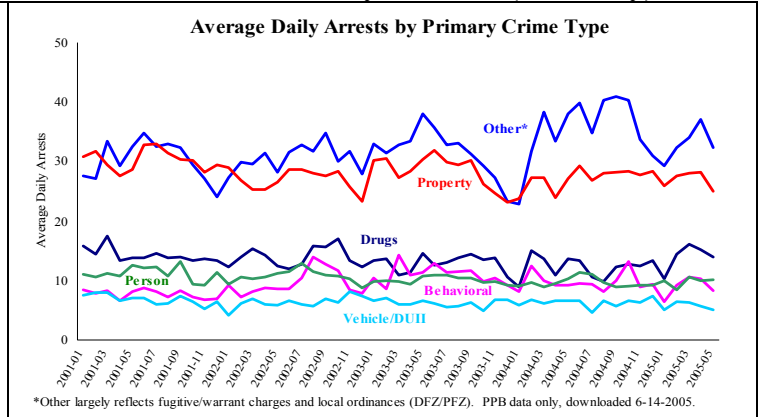


# PUBLIC SAFETY BRIEF: MAY 2005 (BETA TEST VERSION)

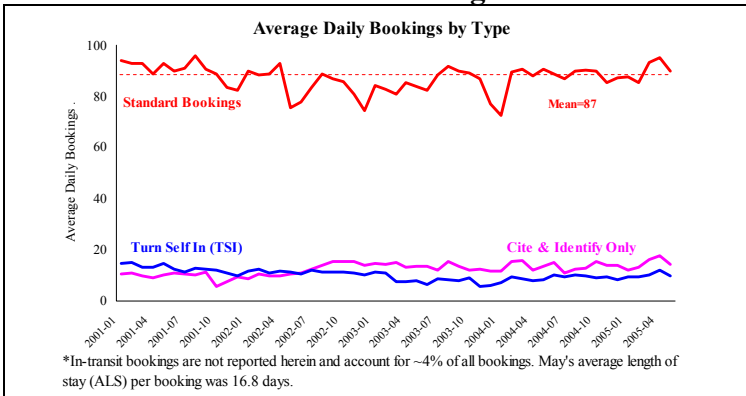
## Multnomah County: Reported Index Offenses



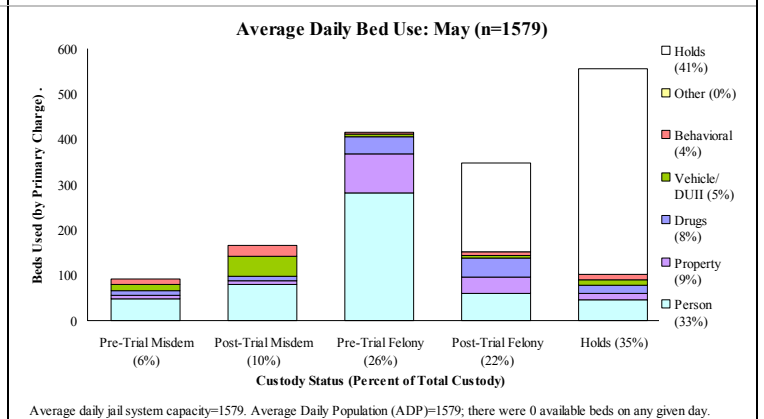
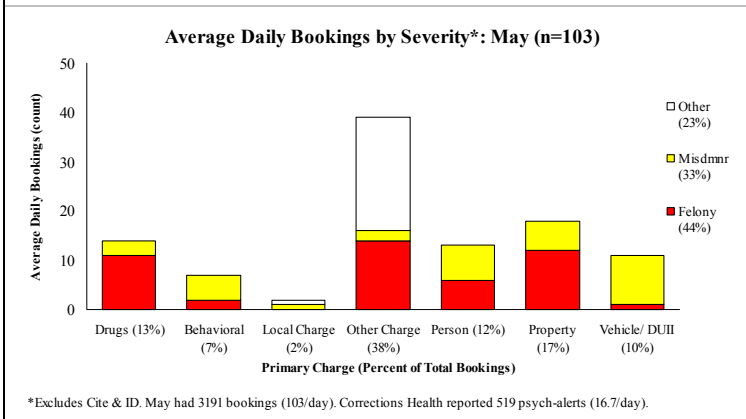
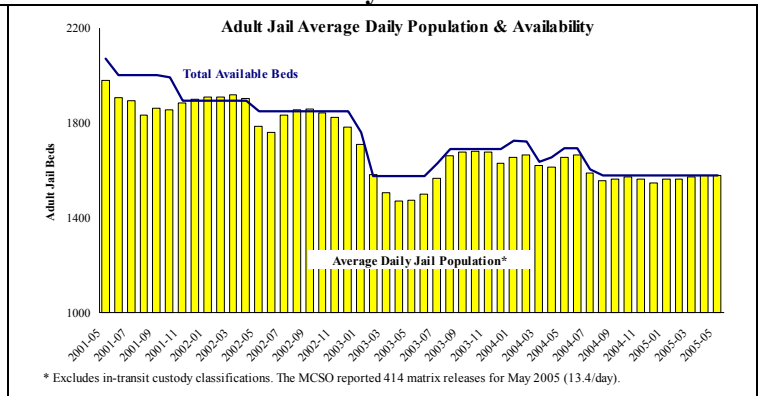
## Multnomah County: Arrests (PPB only)



## Sheriff: Bookings

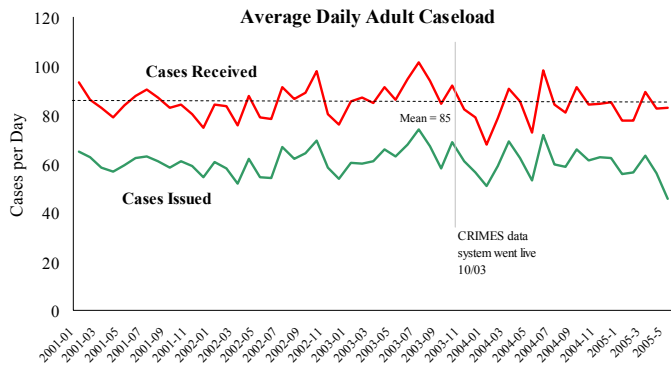


## Sheriff: Custody- Adult Jail Beds



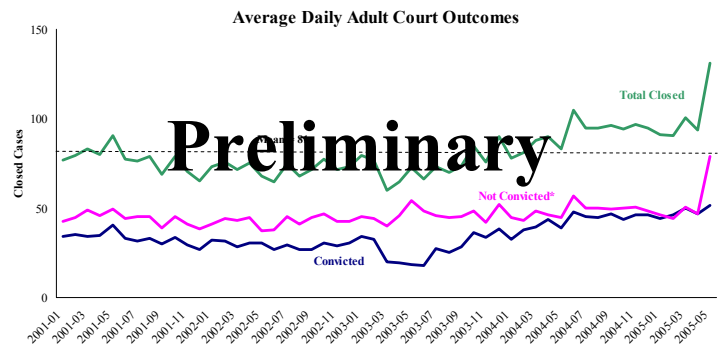
**Notes:** Average Daily Reported Offenses declined slightly; Portland had decreases while Gresham increased (specifically in *auto theft*). Average Daily Arrests decreased slightly due to fewer *Other* category arrests. Average Daily Bookings decreased, mainly due to decreases in felony-level Drug offenses. The MCSO reported 414 matrix releases (average 13.4 per day), a substantial decline over April's levels. Average length of stay increased over April by more than one day (+8%).

## District Attorney: Adult Caseload



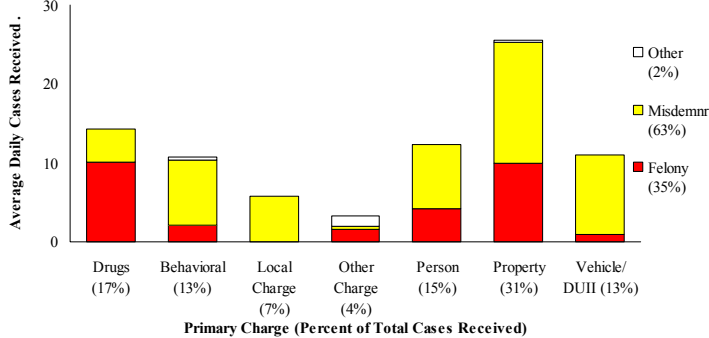
\*Data retrieved 6-14-05. Note: Many recently received cases are pending review.

## Court Processes: Sentencing Outcomes



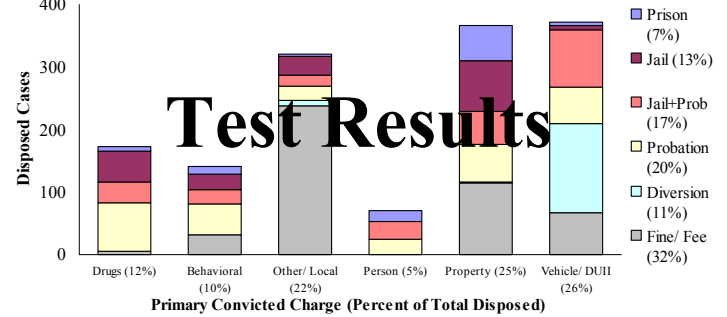
\*Includes dismissed cases (typically no complainant) and cases found not guilty. Adult felony and misdemeanor cases only.

### Average Daily Received Cases\*: May (n=83)



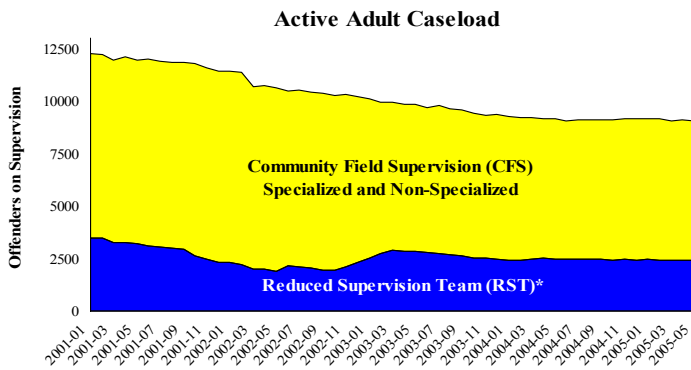
\*May had 2,572 received cases as of 6-14-05 (83/day). Of those, 575 cases were pending review.

### Sentence by Primary Conviction\*: May (n=1605)



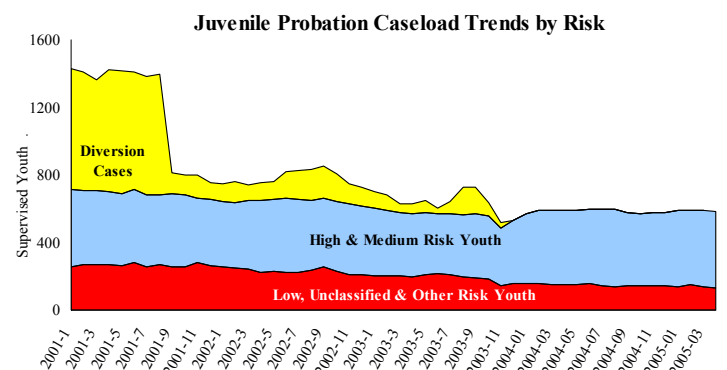
\*Sentenced adult felons and misdemeanors. Primary conviction charge is the most serious charge with a conviction and may differ from the original primary charge. May had 1,605 convictions; 26% were felonies; 162 cases were not sentenced.

## Adult Community Supervision: Caseloads

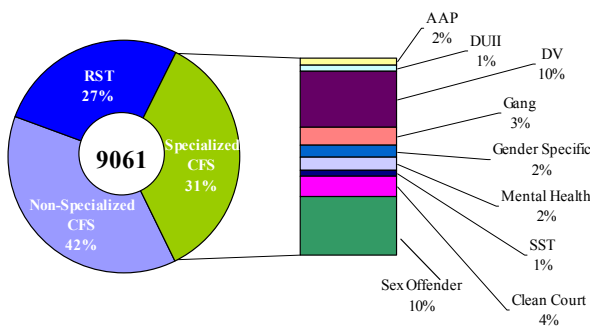


\*Reduced Supervision Team (RST) formerly casebank.

## Juvenile Community Supervision: Caseloads

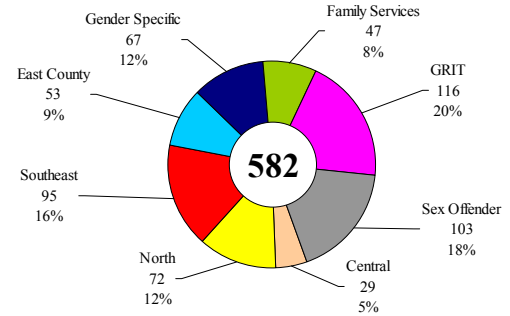


### Adult Active Caseload by Type\*: May 2005



\*Less than 1% are "other" cases which have been included as non-specialized.

### Juvenile Justice Caseload by Unit: April 2005



Average caseload per counselor was 24 cases for April.

**Notes.** The DA Adult Cases Received increased slightly—due to increases in *Alcohol & Drugs*, *Behavioral* and *Person* offenses. Adult Supervision caseloads decreased overall (increase in *RST* was offset by declines in both *Specialized* and *Non-Specialized* cases). The *African-American Program (AAP)* is a new *Specialized* adult caseload type now reported herein. Juvenile caseload was down slightly due to fewer medium- and low-risk supervision cases (caseload per counselor remained unchanged overall).