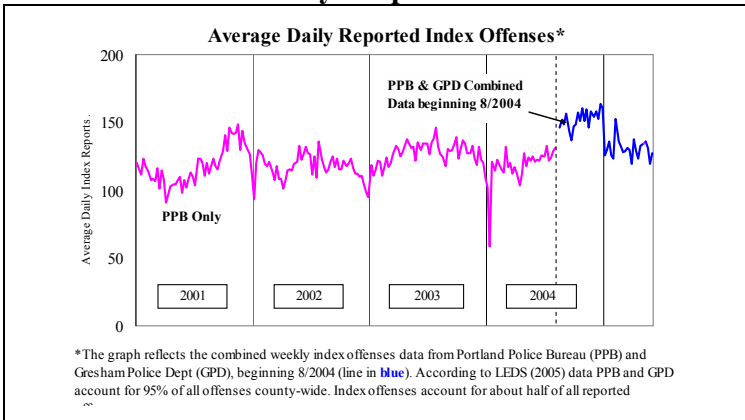
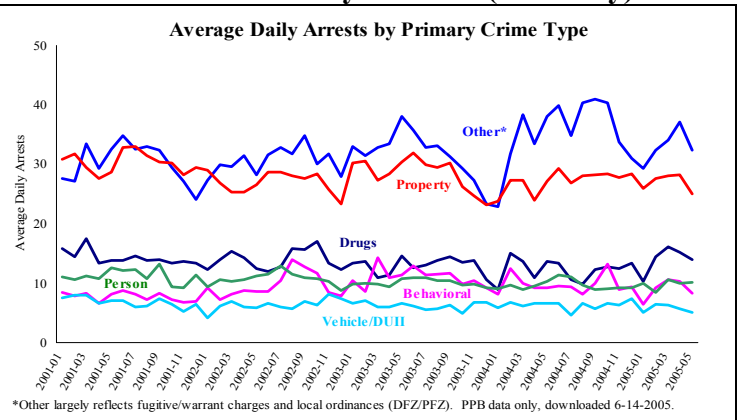


# PUBLIC SAFETY BRIEF: MAY 2005

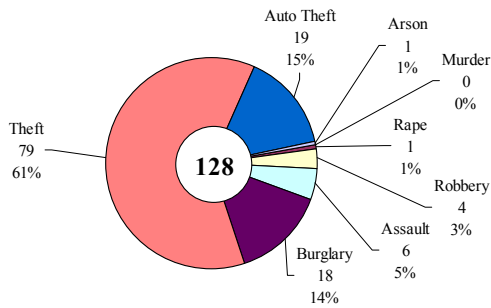
## Multnomah County: Reported Index Offenses



## Multnomah County: Arrests (PPB only)

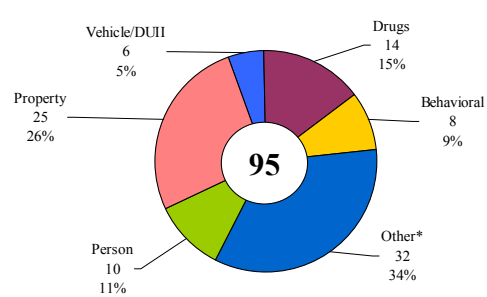


### Average Daily Reported Index Offenses\*: May



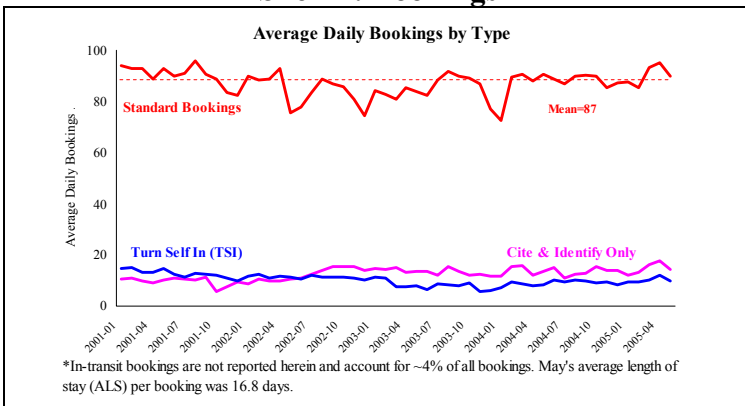
\*Portland and Gresham, combined 4-week moving average for the week ending 5-21-2005.

### Average Daily Arrests: May 2005

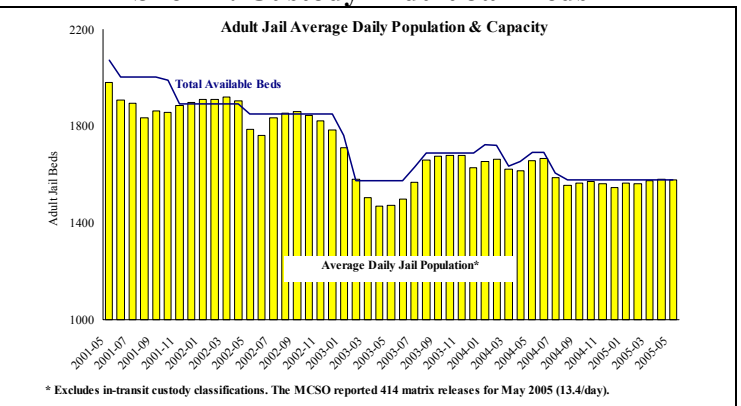


\*Includes local ordinances (DFZ and PFZ) and fugitive/warrant charges. PPB data only.

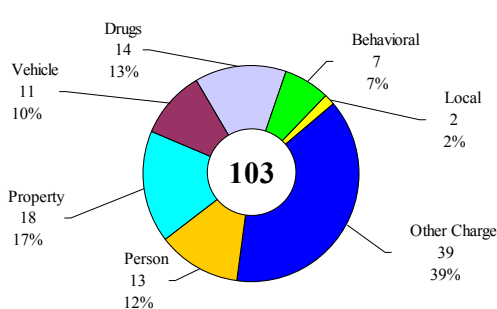
## Sheriff: Bookings



## Sheriff: Custody- Adult Jail Beds

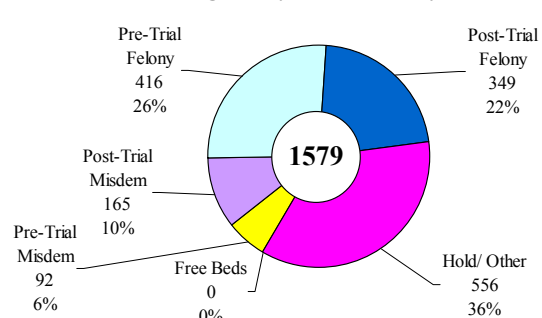


### Average Daily Bookings\*: May 2005



\*All booking types; excludes Cite & ID. Corrections Health reported 519 psych-alert bookings (16.7/day) in May.

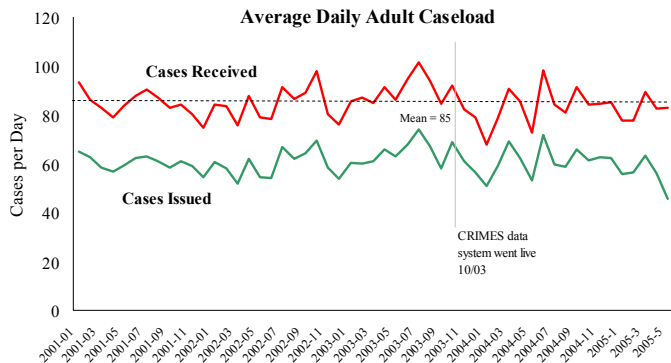
### Average Daily Bed Use: May 2005



Average Daily Population (ADP)=1579. Average Daily Capacity=1579.

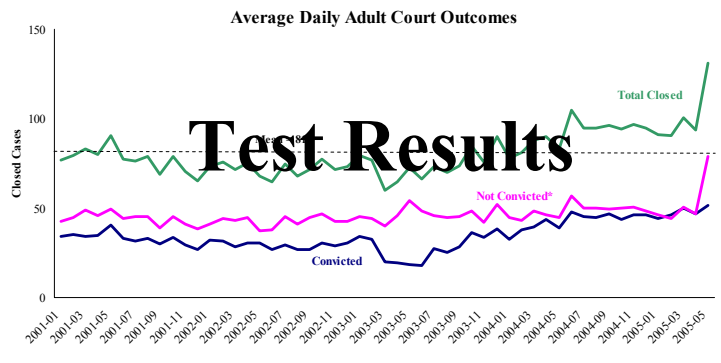
**Notes:** Average Daily Reported Offenses declined slightly; Portland had decreases while Gresham increased (specifically in *auto theft*). Average Daily Arrests decreased slightly due to fewer *Other* category arrests. Average Daily Bookings decreased, mainly due to decreases in felony-level Drug offenses. The MCSO reported 414 matrix releases (average 13.4 per day), a substantial decline over April's levels. Average length of stay increased over April by more than one day (+8%).

## District Attorney: Adult Caseload



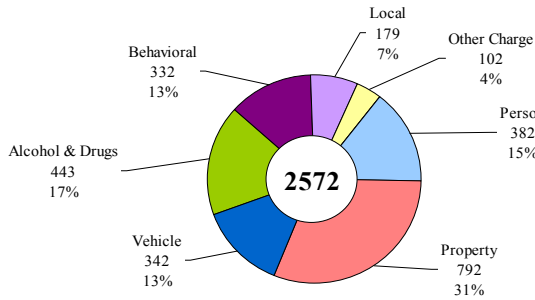
\*Data retrieved 6-14-05. Note: Many recently received cases are pending review.

## Court Processes: Sentencing Outcomes



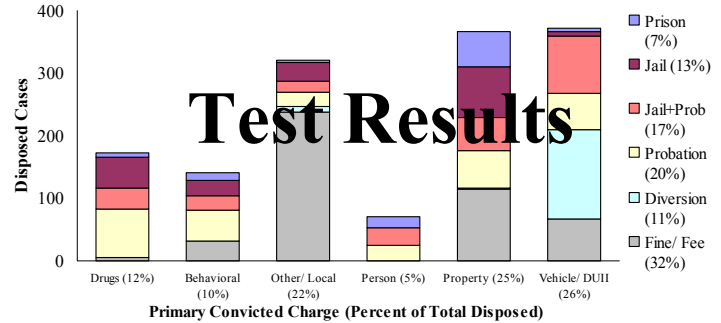
\*Includes dismissed cases (typically no complainant) and cases found not guilty. Adult felony and misdemeanor cases only.

### Received Cases\*: May 2005



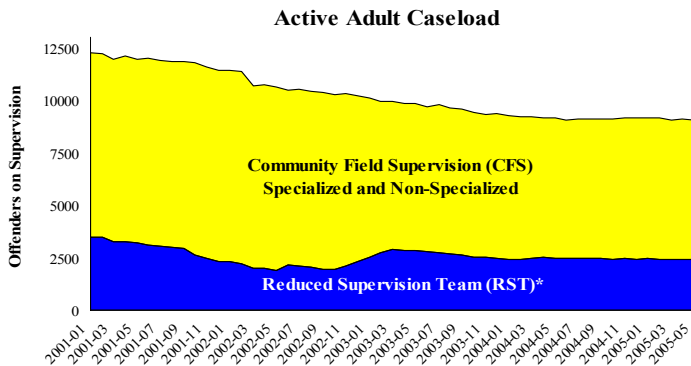
\*As of 6-14-2005. May had 575 received cases which were pending review.

### Disposition Type by Primary Conviction\*: May 2005



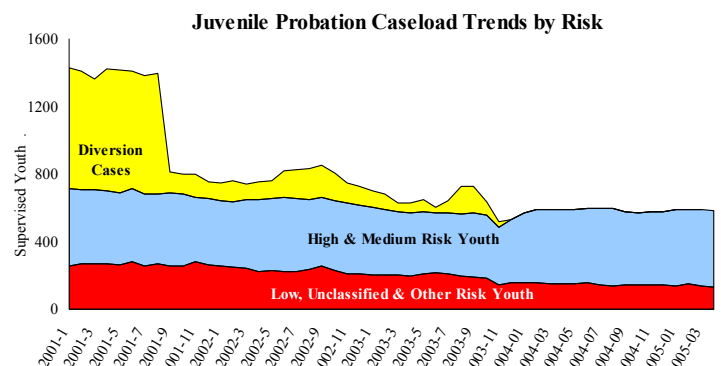
\*Sentenced adult felony and misdemeanors primary convictions only. Primary conviction charge is the most serious charge with a conviction and may differ from the original primary charge. May had 1,605 convictions; 26% were felonies.

## Adult Community Supervision: Caseloads

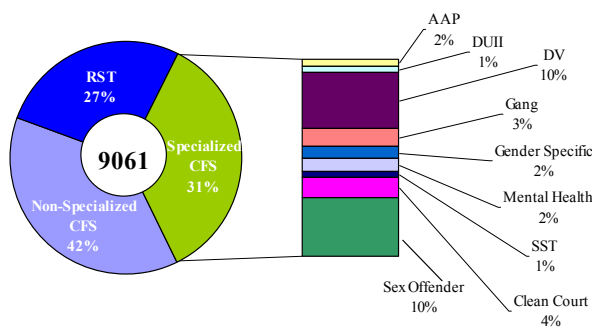


\*Reduced Supervision Team (RST) formerly casebank.

## Juvenile Community Supervision: Caseloads

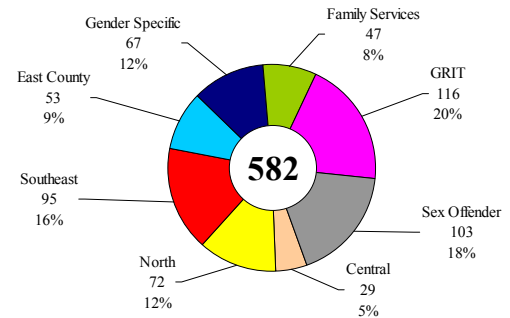


### Adult Active Caseload by Type\*: May 2005



\*Less than 1% are "other" cases which have been included as non-specialized.

### Juvenile Justice Caseload by Unit: April 2005



Average caseload per counselor was 24 cases for April.

**Notes.** The DA Adult Cases Received increased slightly—due to increases in *Alcohol & Drugs*, *Behavioral* and *Person* offenses. Adult Supervision caseloads decreased overall (increase in *RST* was offset by declines in both *Specialized* and *Non-Specialized* cases). The *African-American Program (AAP)* is a new *Specialized* adult caseload type now reported herein. Juvenile caseload was down slightly due to fewer medium- and low-risk supervision cases (caseload per counselor remained unchanged overall).