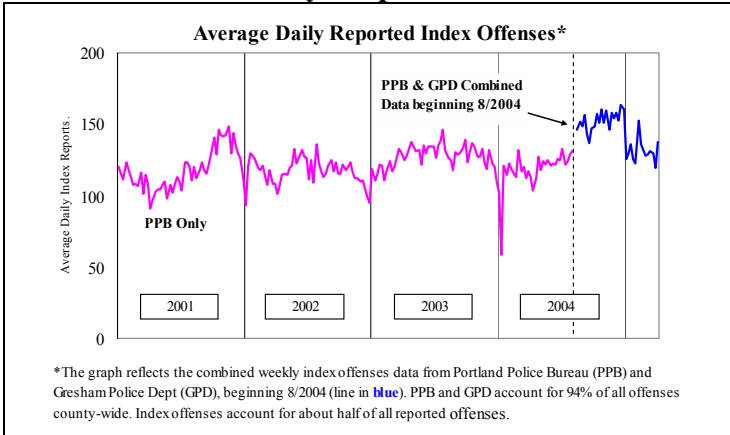
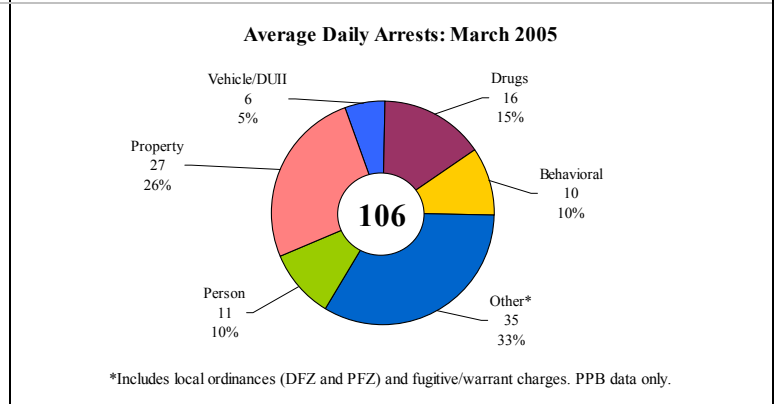
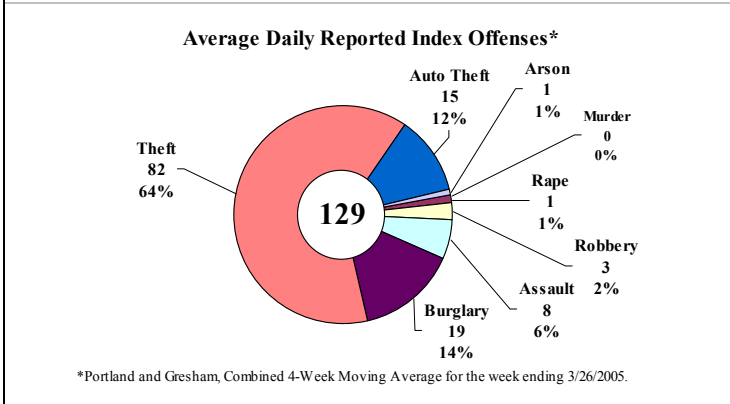
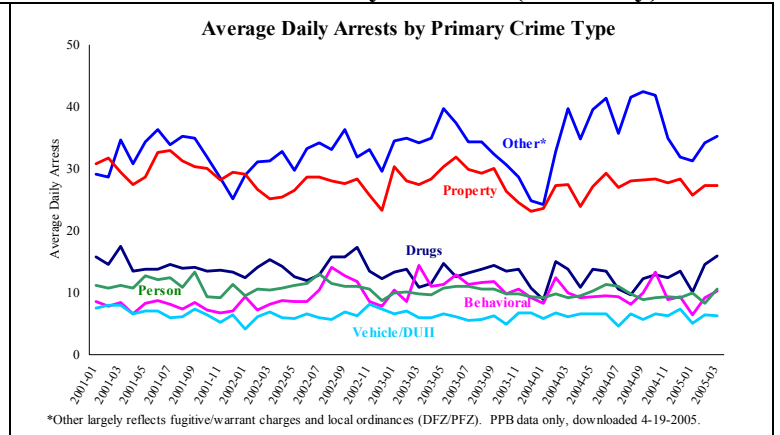


PUBLIC SAFETY BRIEF: MARCH 2005

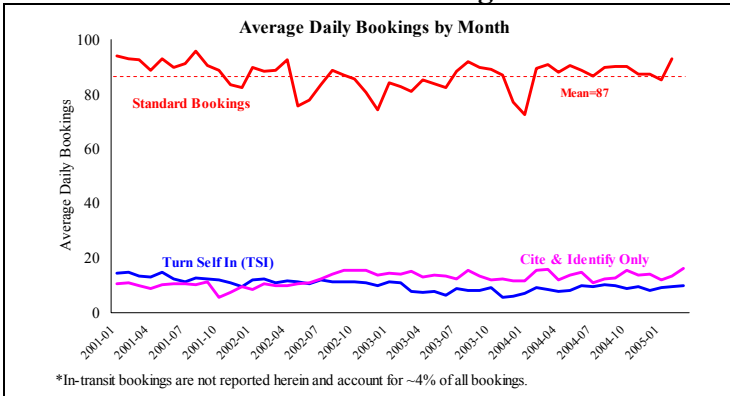
Multnomah County: Reported Index Offenses



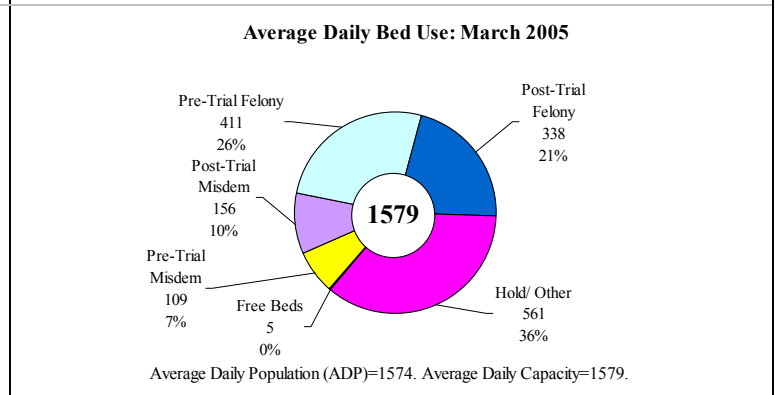
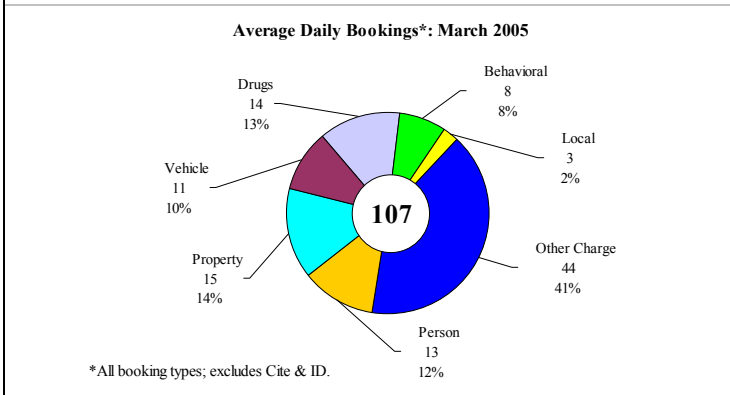
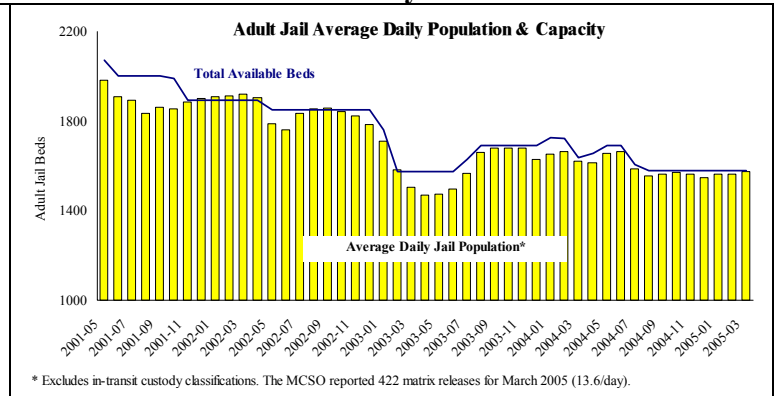
Multnomah County: Arrests (PPB only)



Sheriff: Bookings

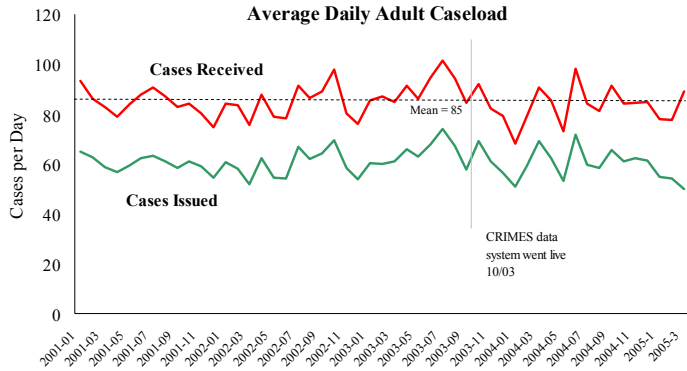


Sheriff: Custody- Adult Jail Beds



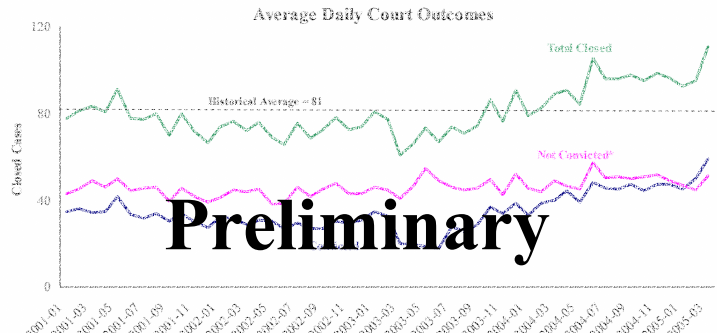
Notes: Average Daily Reported Offenses declined slightly, due to decreases in reported auto theft in Portland. Average Daily Arrests increased over February for all categories except vehicle/ DUII. Average Daily Bookings increased due to increases in standard bookings for felony probation violations (captured under the 'Other' category). Matrix releases increased by 180, averaging 13.4 per day.

District Attorney: Adult Caseload



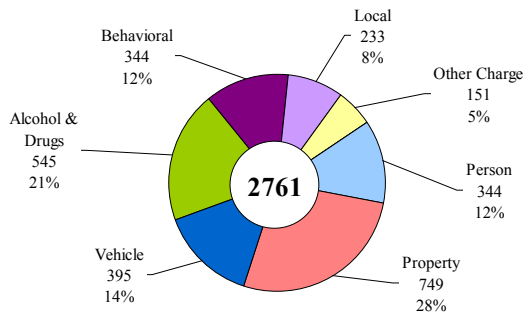
*Data retrieved 4-14-05. Note: Many recently received cases are pending review.

Court Processes: Sentencing Outcomes



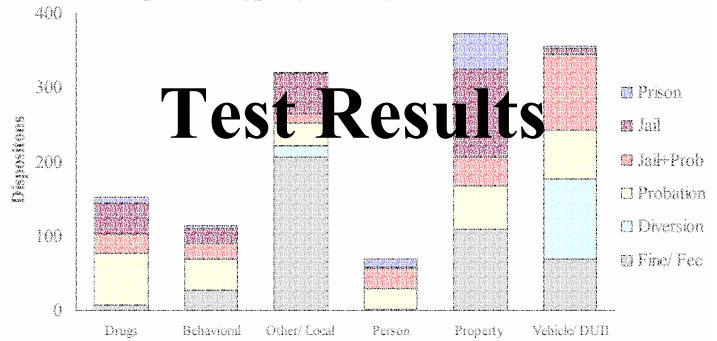
*Excludes dismissed cases (typically no complaint) and cases found not guilty. Felony and misdemeanor cases only.

Received Cases*: March 2005



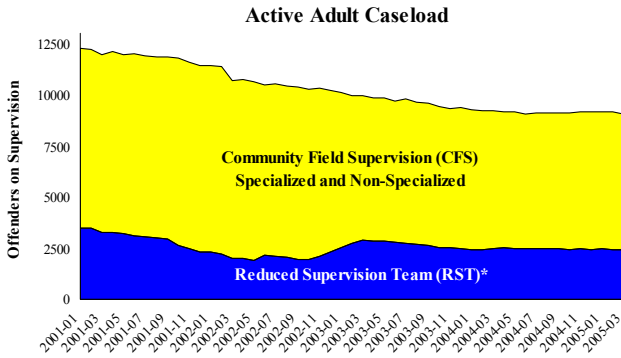
*As of 4-14-2005. March had 695 received cases which were pending review.

Disposition Type by Primary Conviction*: Mar 2005



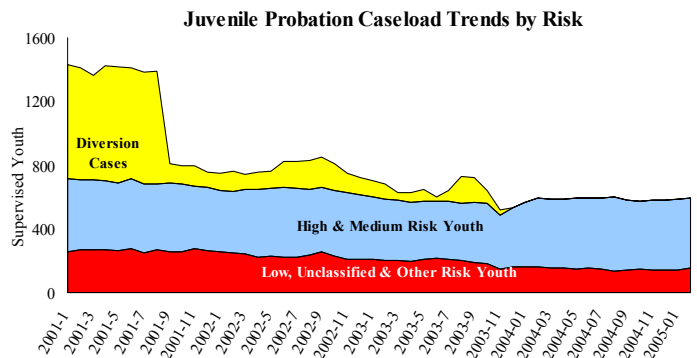
*Sentenced adults felony and misdemeanors primary convictions only. Primary conviction charge is the most serious charge with a conviction and may differ from the original primary charge. Percent felonies = 23%.

Adult Community Supervision: Caseloads

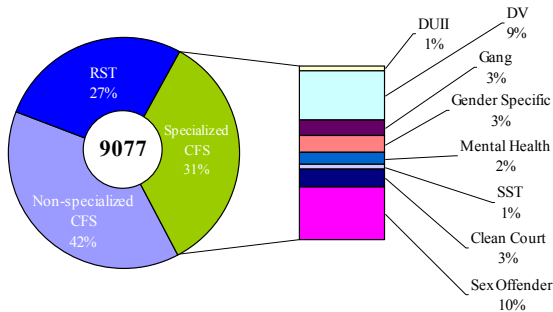


*Reduced Supervision Team (RST) formerly casebank.

Juvenile Community Supervision: Caseloads

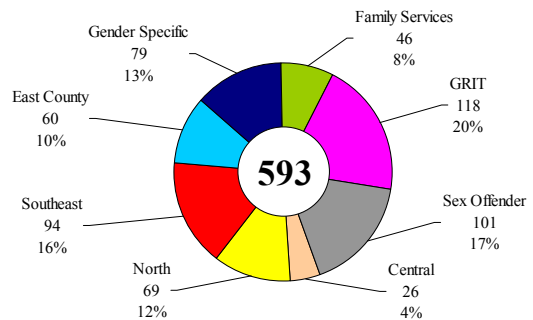


Adult Active Caseload by Type*: March 2005



*Less than 1% are "other" cases which have been included as non-specialized.

Juvenile Justice Caseload by Unit: February 2005



Average caseload per counselor was 23 cases for February.

Notes. The DA Adult cases received increased by nearly 600 received cases—due to increases in all offense categories—becoming consistent with multi-year averages. Adult Supervision and Juvenile caseloads were relatively consistent with February. The average Juvenile Justice caseload per counselor (23) was unchanged.