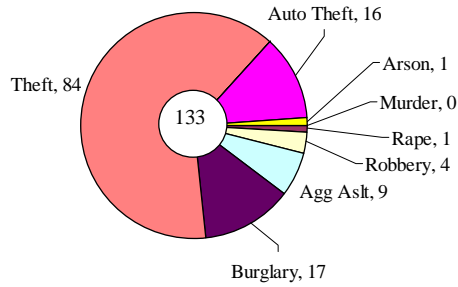


# PUBLIC SAFETY MONTHLY BRIEF: JUNE 2003

## Portland Police: Reported Offenses

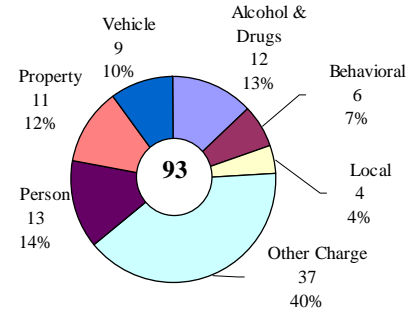
Average Daily Reported Index Offenses\*



\*City of Portland, 4-week moving average as of 6-21-03.

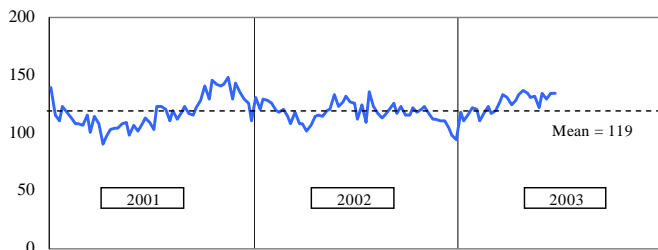
## Sheriff: Bookings

Average Daily Bookings: June 2003



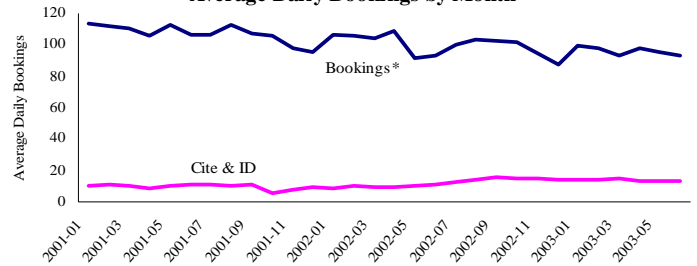
Excludes cite & ID.

Average Daily Reported Index Crimes



Source: Portland Police Bureau weekly index offense reports. To 6-21-03.

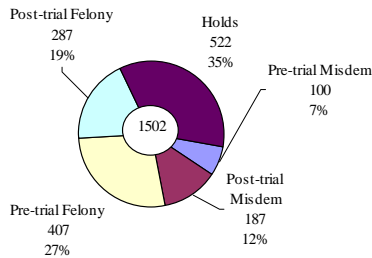
Average Daily Bookings by Month



\*Includes in-transit bookings, which accounted for ~4%.

## Sheriff: Custody- Jail Beds

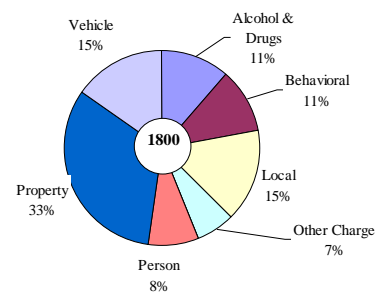
June 2003



Average Daily Population (ADP)=1502. Current capacity 1576 beds.

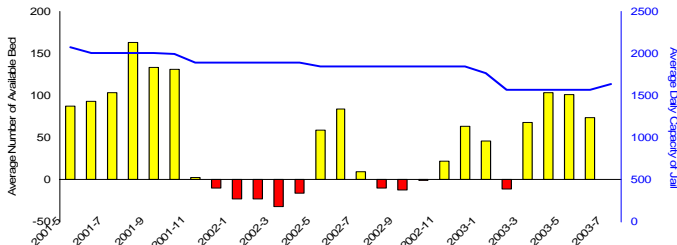
## District Attorney: Caseload

Issued Cases: June 2003

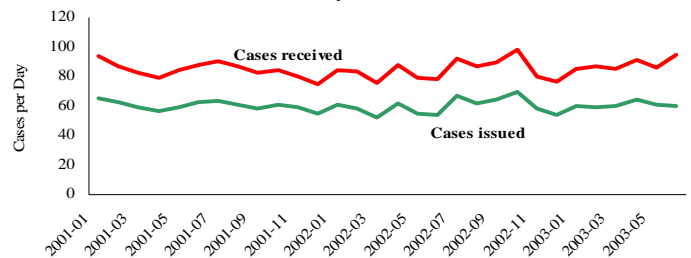


\*As of 7-22-03.

Average Daily Jail Capacity & Availability



DA Daily Caseload



\*As of 7-22-03

### Notes:

Average daily index crime reports remain above the multi-year average, driven mostly by increases in theft. Average daily bookings continue their decline; currently they are at levels consistent with 1994. Bed availability continues to remain high in June 2003, at 74 beds open on average each day. Cases received for review by the DA has ticked up, while issued cases appear relatively steady.