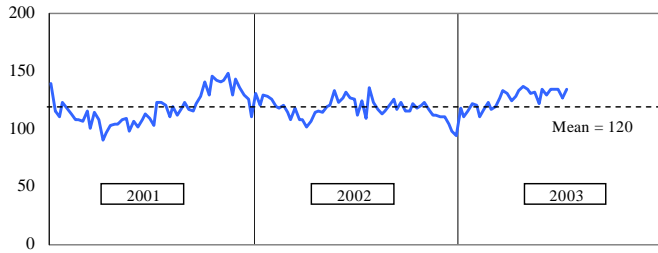


PUBLIC SAFETY MONTHLY BRIEF: JULY 2003

Portland Police: Reported Offenses

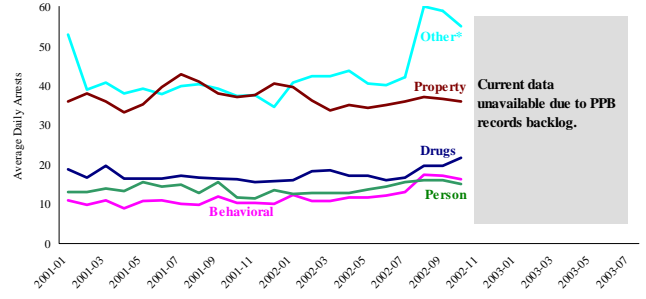
Average Daily Reported Index Crimes



*PPB weekly index offense reports as of 7-12-03. Index crimes account for half of all crime.

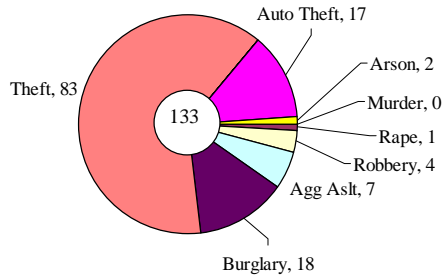
Portland Police: Arrests

Average Daily Arrests by Primary Crime Type



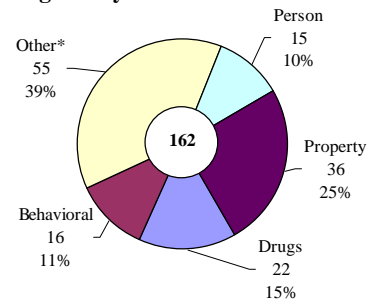
*Includes vehicle/dui violations, local ordinances, and fugitive charges.

Average Daily Reported Index Offenses*



*City of Portland, 4-week moving average as of 7-12-03.

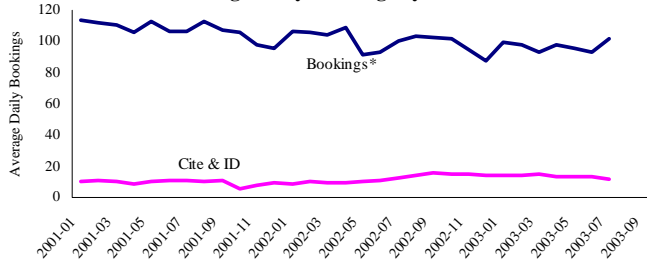
Average Daily Arrests: October 2002



*Includes vehicle/dui violations, local ordinances, and fugitive charges.

Sheriff: Bookings

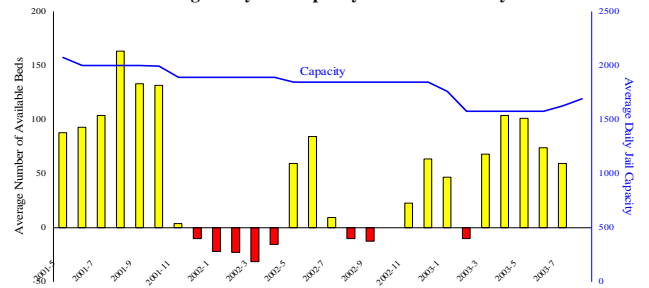
Average Daily Bookings by Month



*Includes in-transit bookings, which accounted for ~4%.

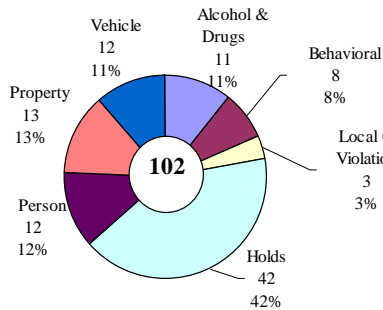
Sheriff: Custody- Jail Beds

Average Daily Jail Capacity & Bed Availability



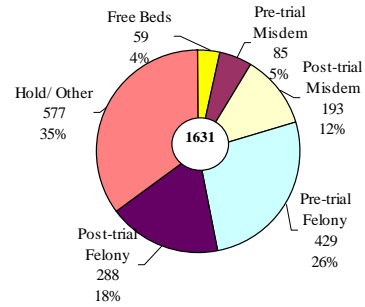
Note: Ten (10) matrix releases occurred Sunday July 27th. All were women.

Average Daily Bookings: July 2003



Excludes cite & ID.

Average Daily Bed Use: July 2003



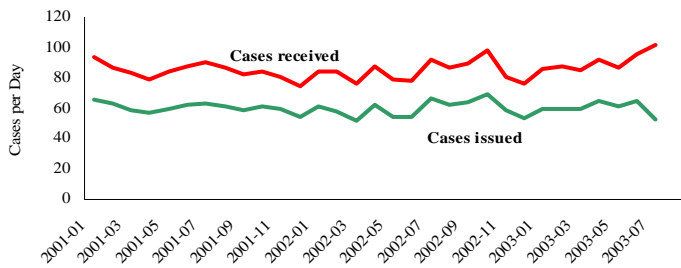
Average daily population (ADP)=1572. Average daily capacity 1631.

Notes:

Average daily index crime reports remain above the multi-year average, driven mostly by increases in theft. Average daily bookings continue their decline; currently they are at levels consistent with 1994. Bed availability continues to remain high in June 2003, at 74 beds open on average each day.

District Attorney: Caseload

DA Daily Caseload

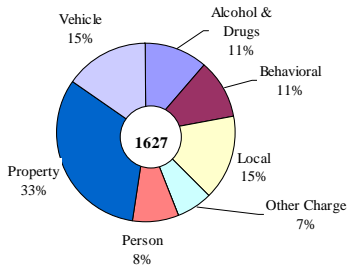


*As of 8-6-03. Note many recently received cases are pending review.

Court Processes:

TBD

Issued Cases*: July 2003

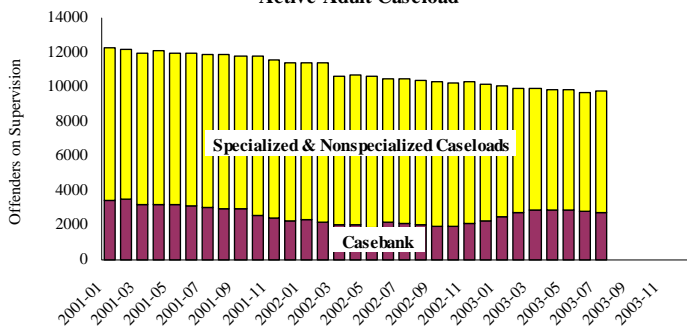


*As of 8-6-03. July had 962 received cases which were pending review.

TBD

Adult Community Supervision: Caseloads

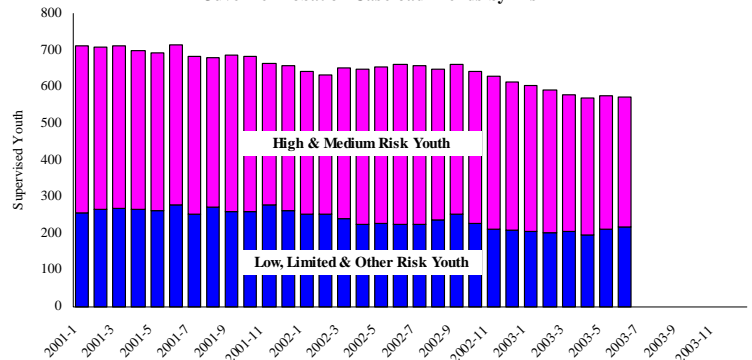
Active Adult Caseload



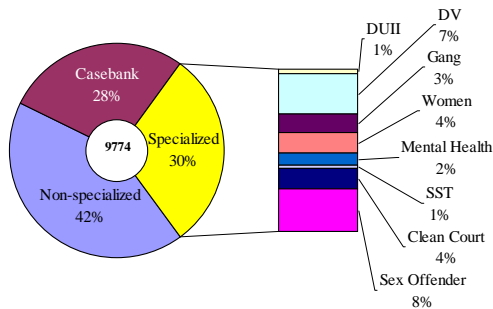
*August 2001 data extrapolated based on prior and subsequent months.

Juvenile Community Supervision: Caseloads

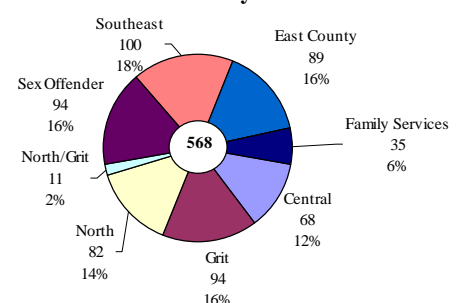
Juvenile Probation Caseload Trends by Risk



Adult Active Caseload by Type: July 2003



Juvenile Justice Caseload by Unit: June 2003



Notes:

Cases received for review by the DA has ticked up, while issued cases appear relatively steady. The apparent decline in July's issued cases is due to the pending review of the current month's cases.

Adult supervision levels show a continued decline; a recent increase in medium and high-risk (i.e., non-casebank) cases occurred in July, coinciding with the restoration of court services

Juvenile caseload has show a recent decline, driven by reductions in the high and medium risk caseloads.