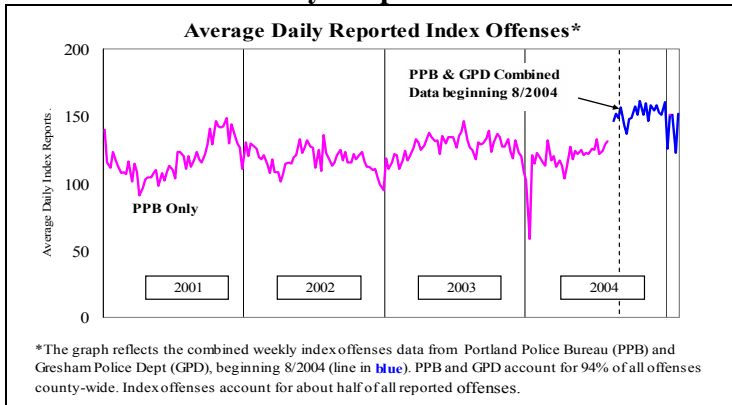
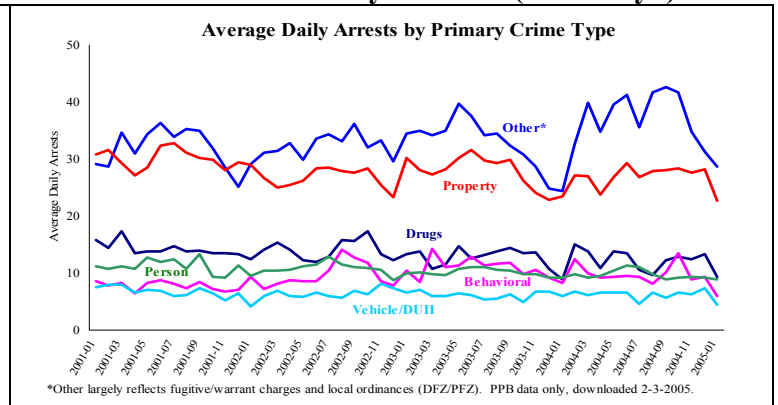


PUBLIC SAFETY BRIEF: JANUARY 2005

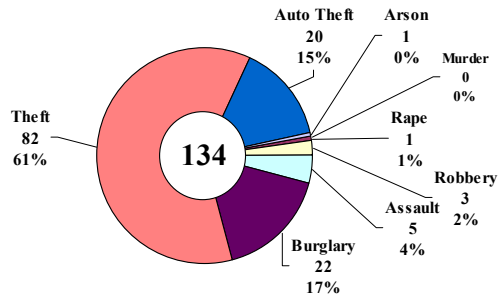
Multnomah County: Reported Index Offenses



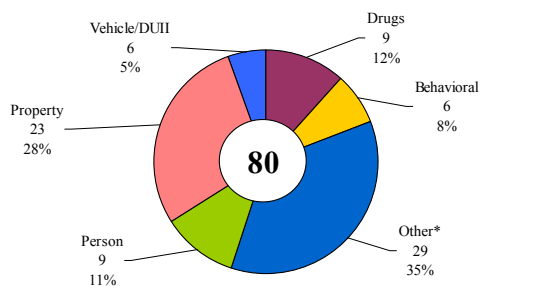
Multnomah County: Arrests (PPB only*)



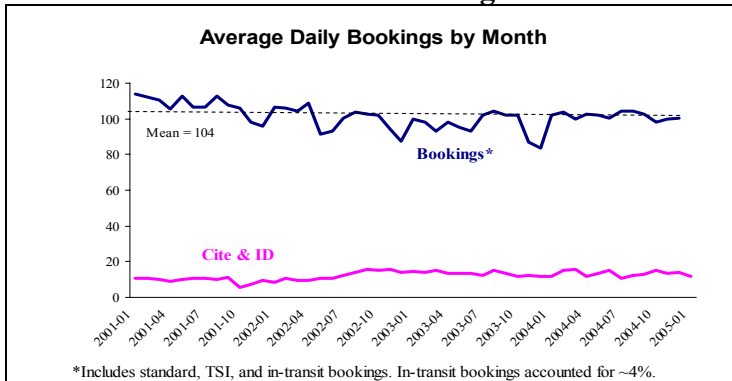
Average Daily Reported Index Offenses*



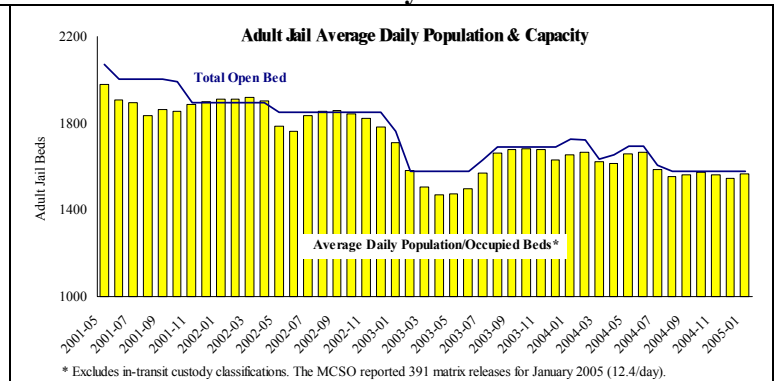
Average Daily Arrests: January 2005



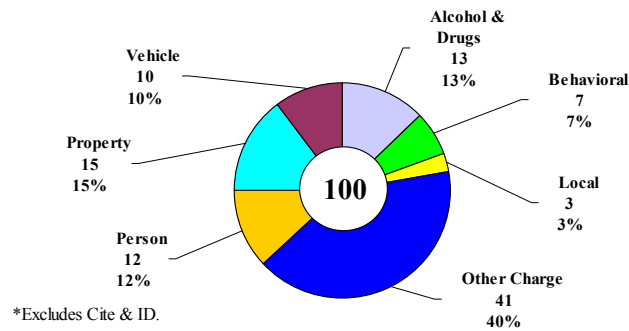
Sheriff: Bookings



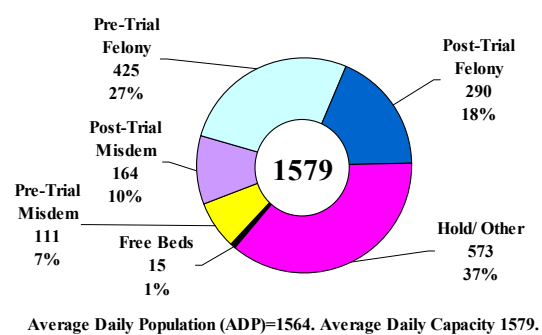
Sheriff: Custody- Adult Jail Beds



Average Daily Bookings*: December 2004



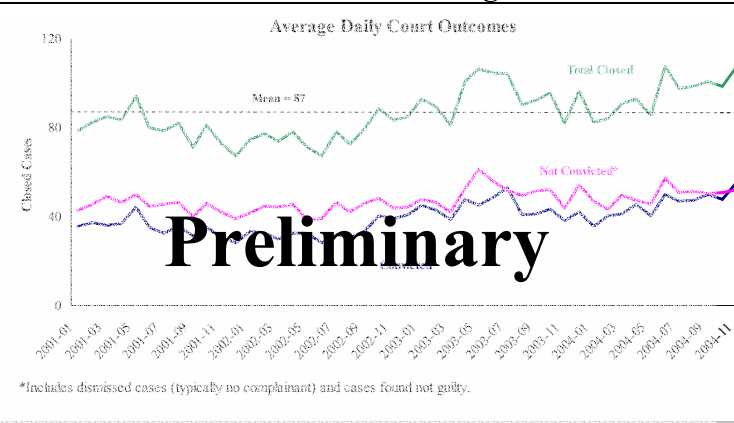
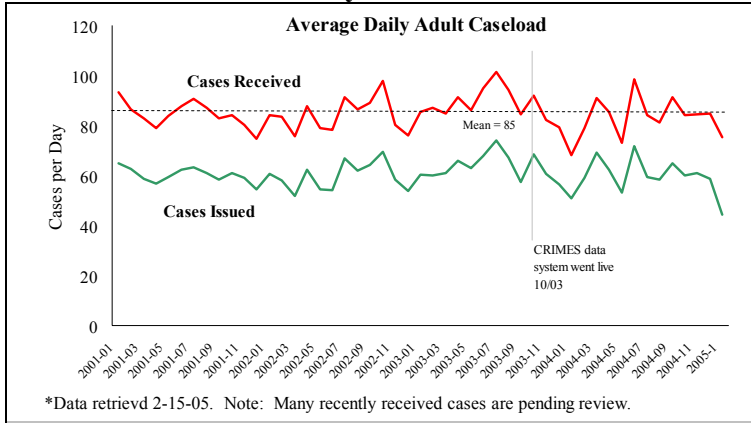
Average Daily Bed Use: January 2005



Notes: Average Daily Reported Index Offenses declined, due to reduced theft (all types) for PPB. Average Daily Arrests declined by 19 from December 2004. The number of arrests in each charge type is very similar to the level of January 2004. Average Daily Bookings were slightly lower (by 4) than the multi-year average. Matrix releases (391) increased by 50% from December 2004, averaging 12.5 per day.

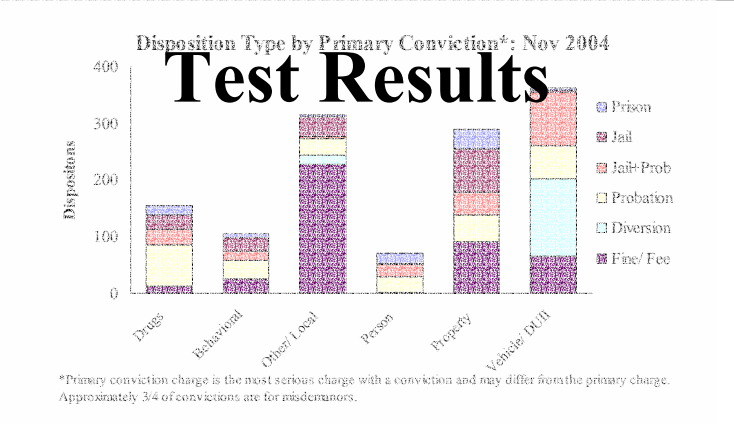
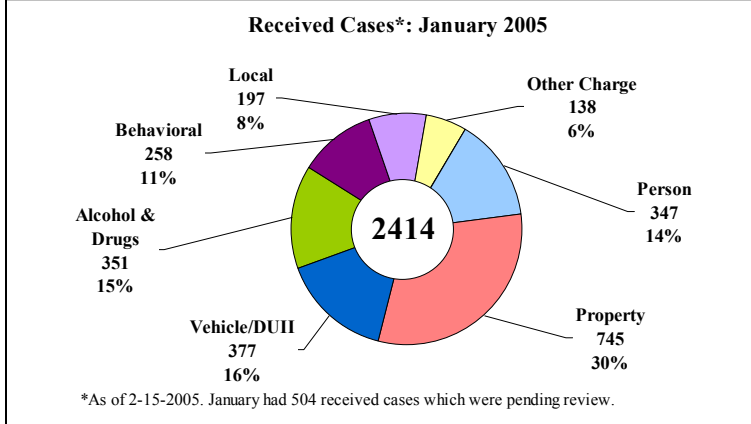
District Attorney: Adult Caseload

Court Processes: Sentencing Outcomes



*Data retrieved 2-15-05. Note: Many recently received cases are pending review.

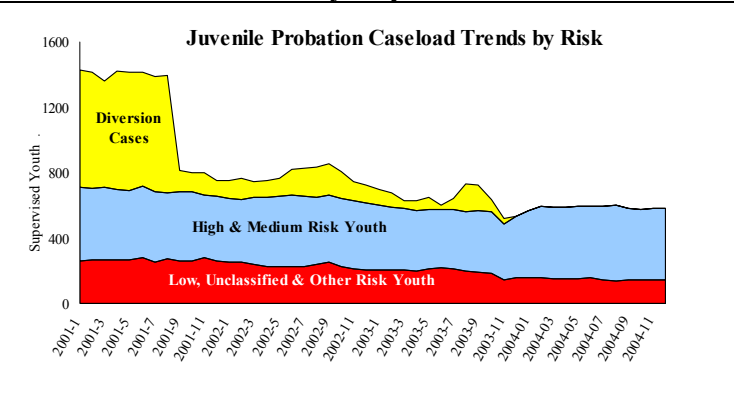
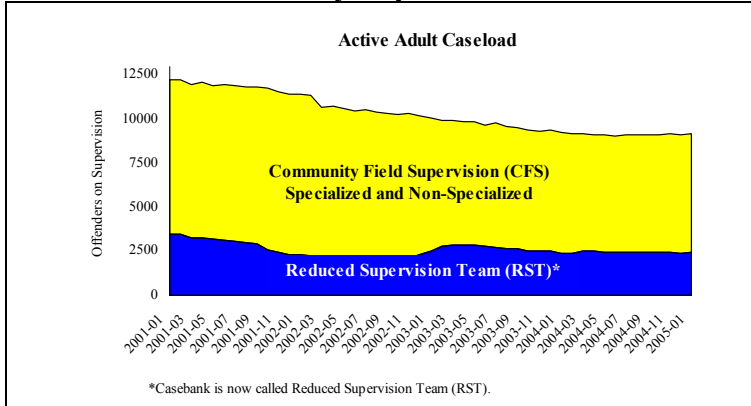
*Includes dismissed cases (typically no complaint) and cases found not guilty.



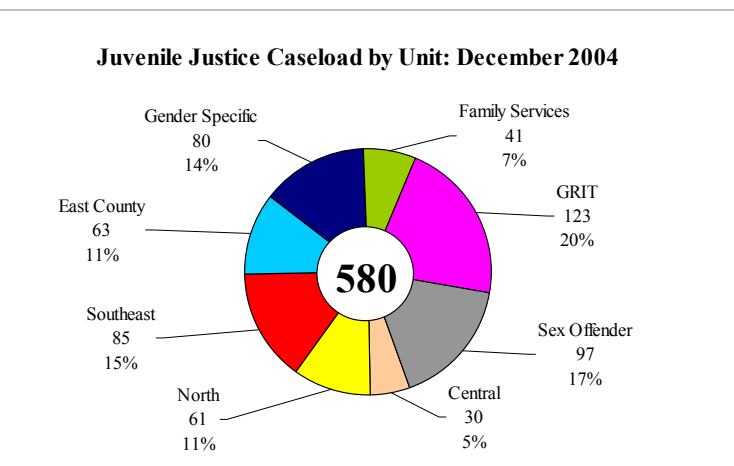
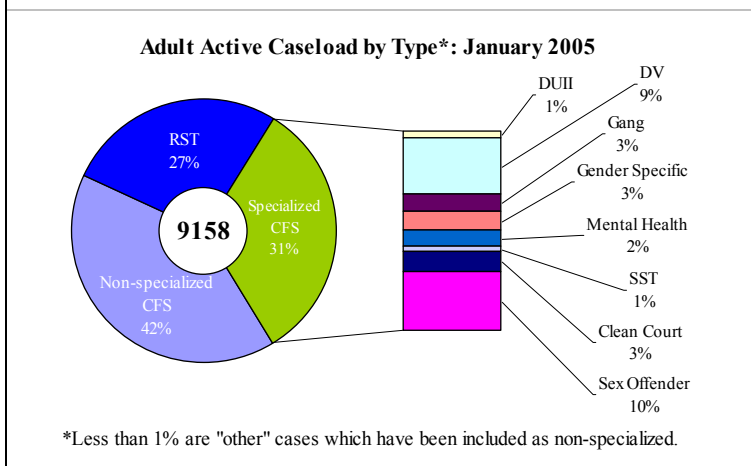
*Primary conviction charge is the most serious charge with a conviction and may differ from the primary charge. Approximately 3/4 of convictions are for misdemeanors.

Adult Community Supervision: Caseloads

Juvenile Community Supervision: Caseloads



*Casebank is now called Reduced Supervision Team (RST).



*Less than 1% are "other" cases which have been included as non-specialized.

Notes. The DA adult caseloads declined in all crime types except Property and Person. Adult Supervision caseloads increased slightly due to increases in the specialized caseload (Gender Specific & Sex Offender). The juvenile caseload levels remained consistent.