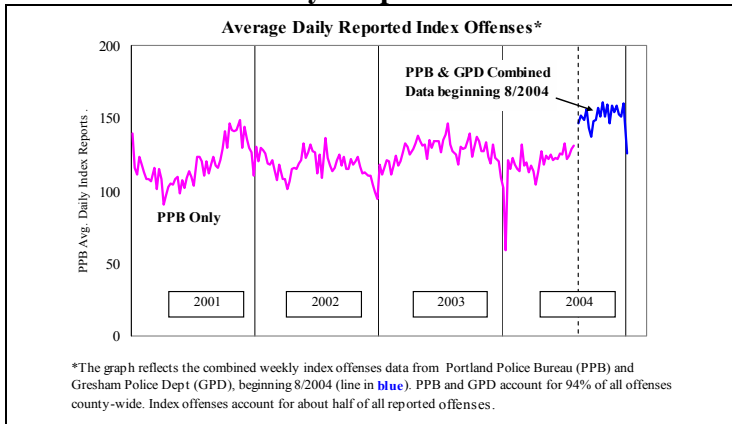
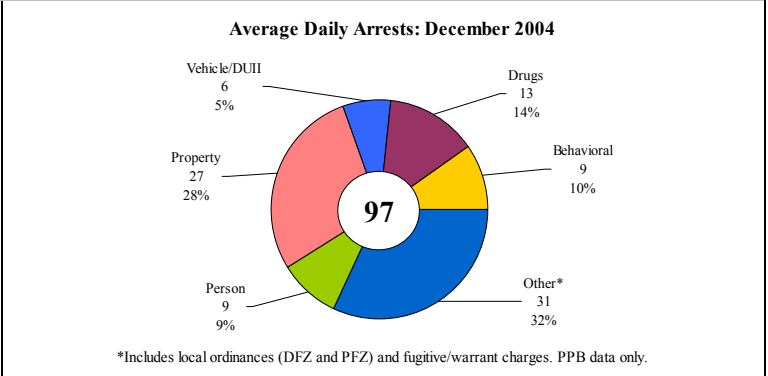
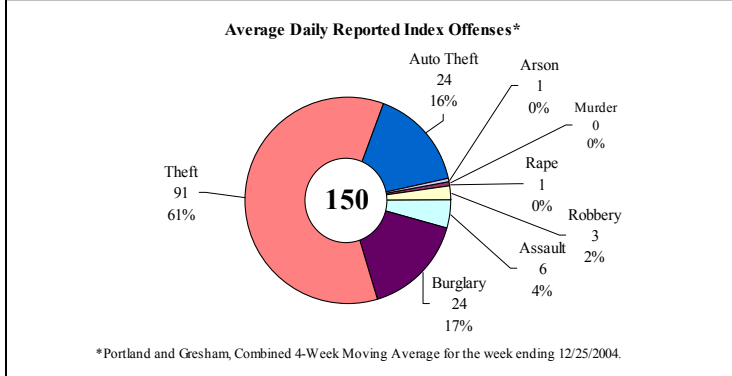
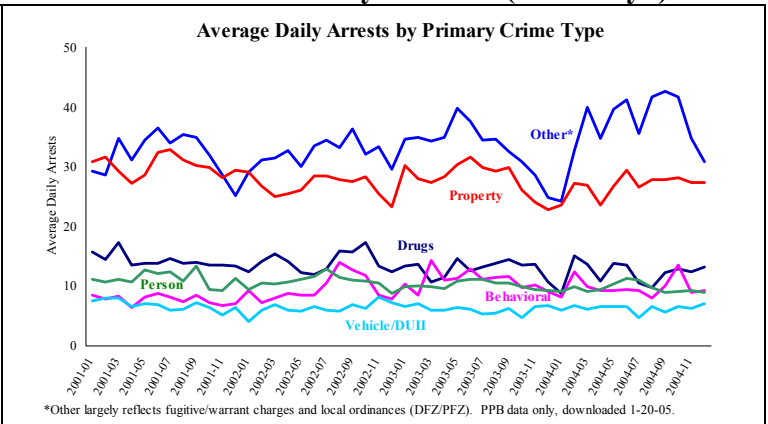


# PUBLIC SAFETY BRIEF: DECEMBER 2004

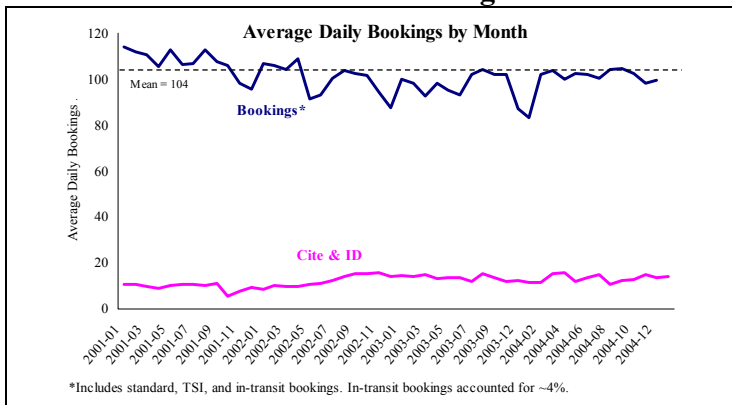
## Multnomah County: Reported Index Offenses



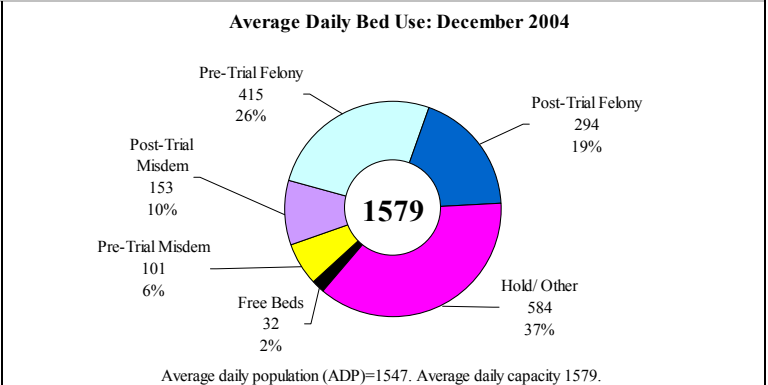
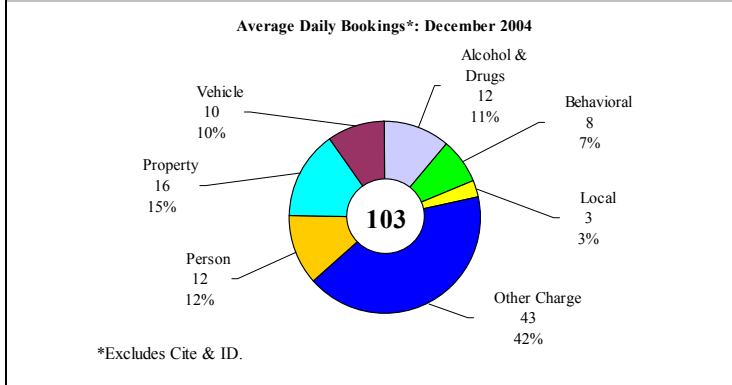
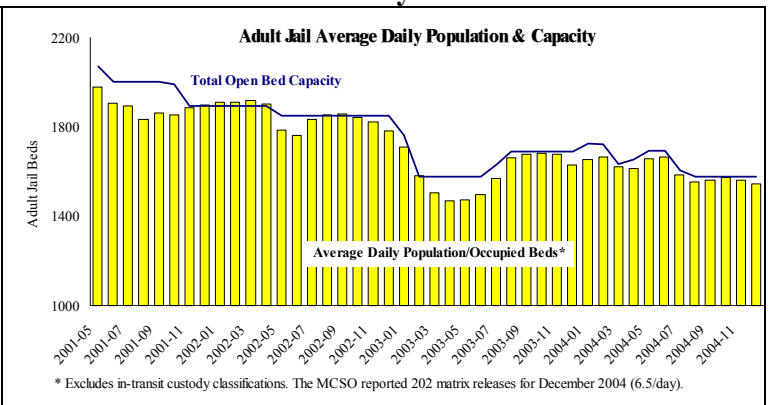
## Multnomah County: Arrests (PPB only\*)



## Sheriff: Bookings

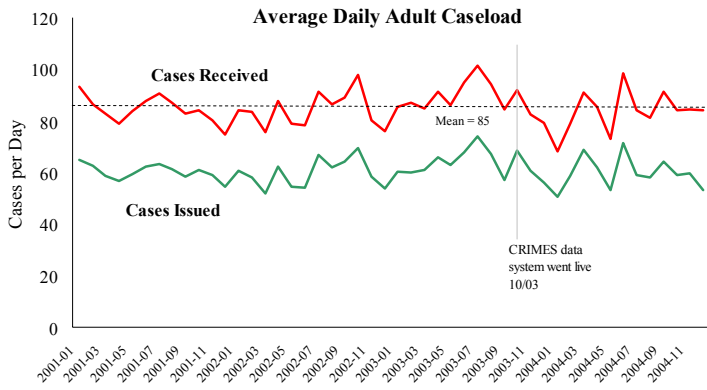


## Sheriff: Custody- Adult Jail Beds



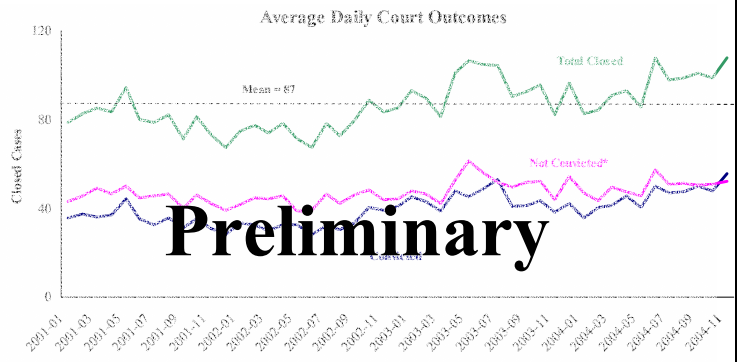
**Notes:** A large decline in average daily reported index offenses was driven by reduced theft (all types) and auto theft in PDX (PPB week ending 12/25/04). Continued declines in 'Other' arrests were due to drops in drug and prostitution free zone violations (DFZ/PFZ) and open container alcohol arrests. PPB and GPD report year-to-date offenses at 2% and 5% lower than 2003, respectively. Average daily bookings were consistent with the multi-year average. Matrix releases were at their lowest levels since October 2004, averaging 6.5 per day.

### District Attorney: Adult Caseload



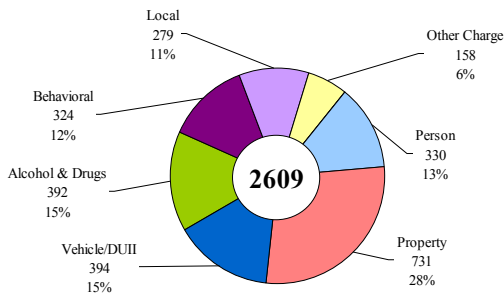
\*Data retrieved 1-25-05. Note: many recently received cases are pending review.

### Court Processes: Sentencing Outcomes



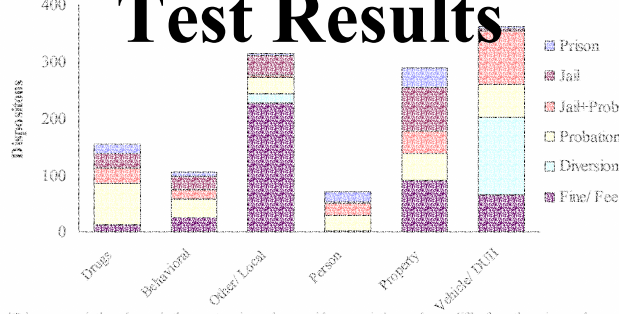
\*Includes dismissed cases (typically no complaint) and cases found not guilty.

#### Received Cases\*: December 2004



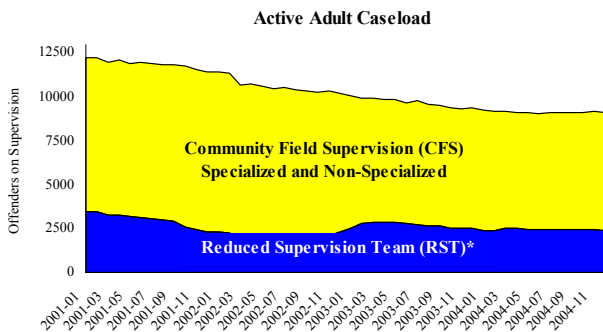
\*As of 1-25-2005. December had 469 received cases which were pending review.

#### Disposition Type by Primary Conviction\*: Nov 2004



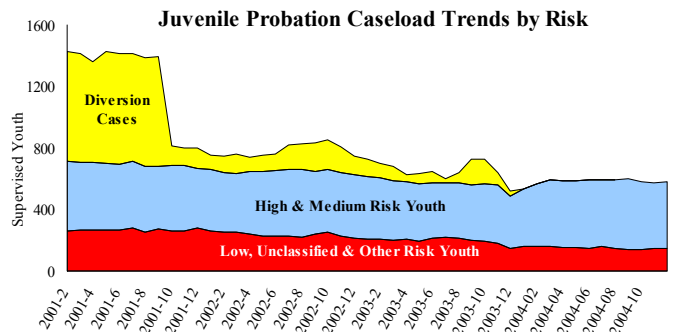
\*Primary conviction charge is the most serious charge with a conviction and may differ from the primary charge. Approximately 3/4 of convictions are for misdemeanors.

### Adult Community Supervision: Caseloads

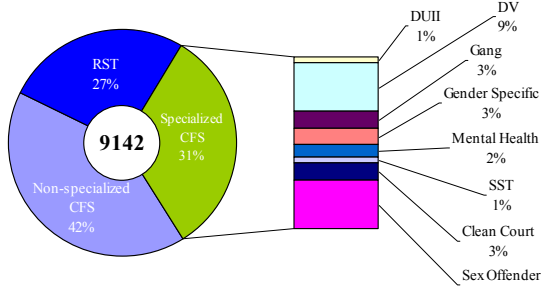


\*Casebank is now called Reduced Supervision Team (RST).

### Juvenile Community Supervision: Caseloads

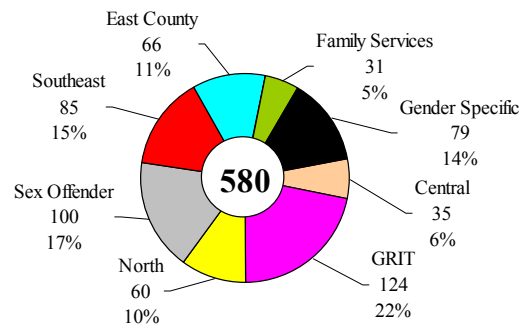


#### Adult Active Caseload by Type\*: December 2004



\*Less than 1% are "other" cases which have been included as non-specialized.

#### Juvenile Justice Caseload by Unit: November 2004



**Notes.** The DA adult caseloads increased by 70 overall (Vehicle/DUII & Local), but saw a 5% decline in property crime cases. Adult Supervision's specialized caseload distribution declined due to reduced "gender specific" cases. The juvenile caseload slightly increased due to increases in high-risk cases.