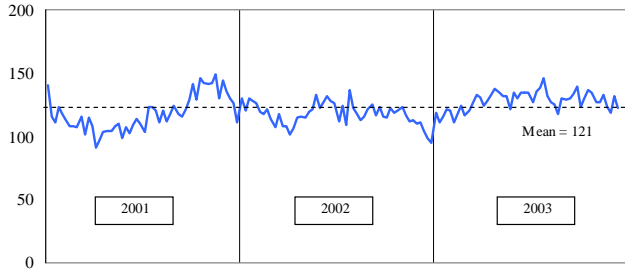


PUBLIC SAFETY BRIEF: DECEMBER 2003

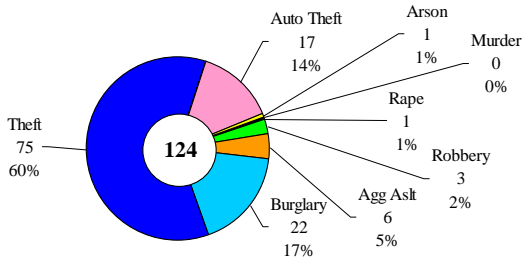
Portland Police: Reported Offenses

Average Daily Reported Index Crimes



*PPB weekly index offense reports through 12-13-03. Index crimes account for half of all reported crime.

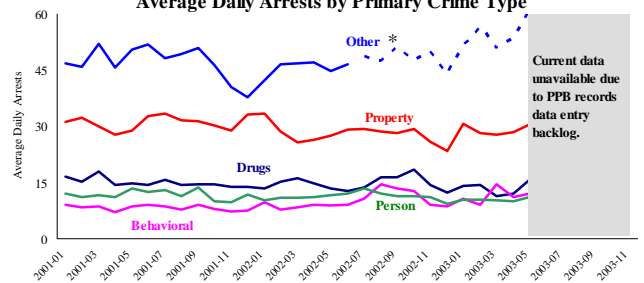
Average Daily Reported Index Offenses*



*City of Portland, 4-week moving average for week ending 12/13/2003

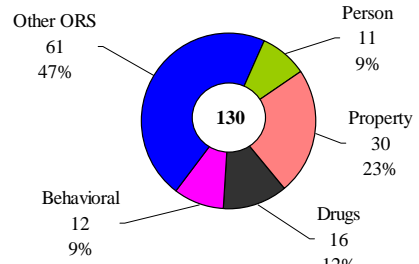
Multnomah County: Arrests (PPB, MCSO, & Fairview)

Average Daily Arrests by Primary Crime Type



*Other includes vehicle (DUI), local ordinances, and fugitive/warrant charges. Increase is due to change in PPB coding method and does not reflect an increase in these types of arrests. Data was downloaded 1/13/04.

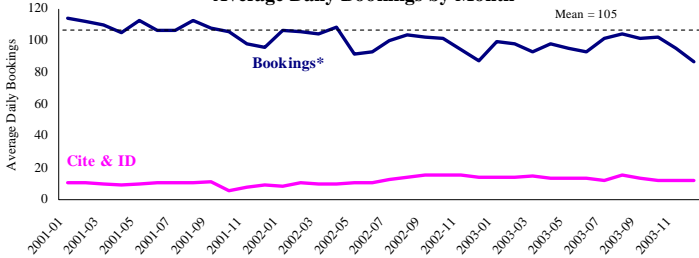
Average Daily Arrests: May 2003



*Includes vehicle (DUI), local ordinances, and fugitive/warrant charges.

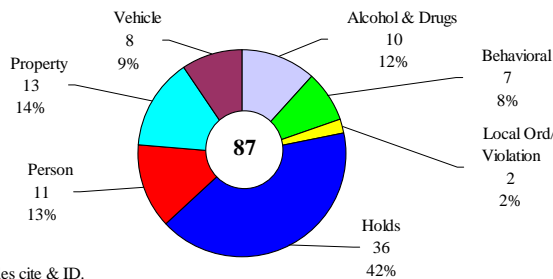
Sheriff: Bookings

Average Daily Bookings by Month



*Includes in-transit bookings, which accounted for ~4%.

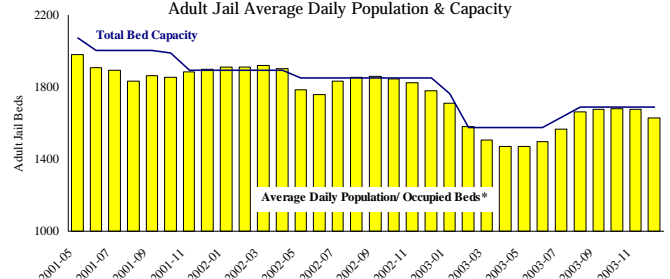
Average Daily Bookings*: December 2003



*Excludes cite & ID.

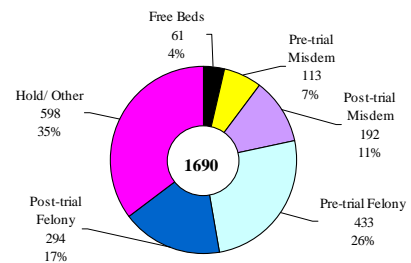
Sheriff: Custody- Adult Jail Beds

Adult Jail Average Daily Population & Capacity



* Excludes in-transit custody classifications. Note, www.inmatereleases.org reported 10 matrix releases for December 2003.

Average Daily Bed Use: December 2003

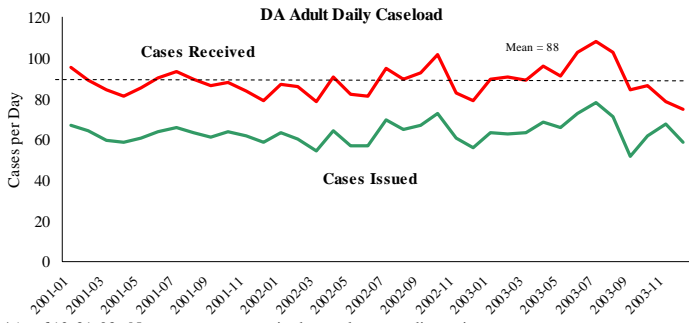


Average daily population (ADP)=1629. Average daily capacity 1690.

Notes:

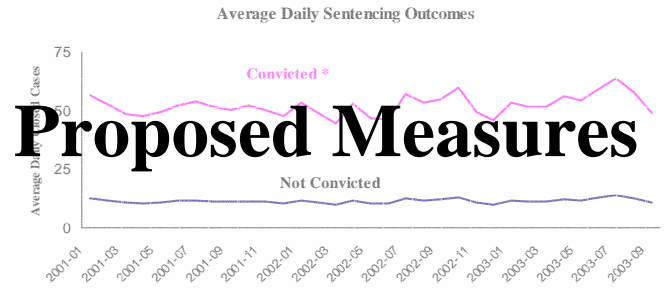
There was a drop in the daily average number of reported index crimes due to decreases in theft from autos, shoplifting, and other larcenies. The average daily bookings dropped from 95 to 87; the largest decrease was in the average number of holds. The average daily custody population dropped from 1678 to 1629, freeing up the most beds since July 2003.

District Attorney: Adult Caseload



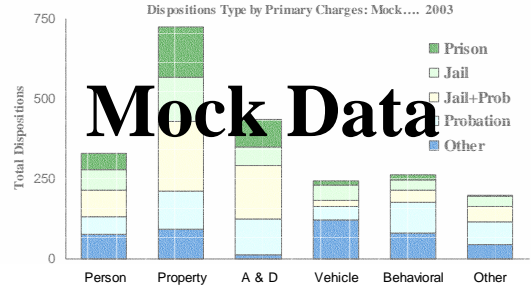
*As of 12-31-03. Note: many cases received recently are pending review.

Court Processes: Sentencing Outcomes



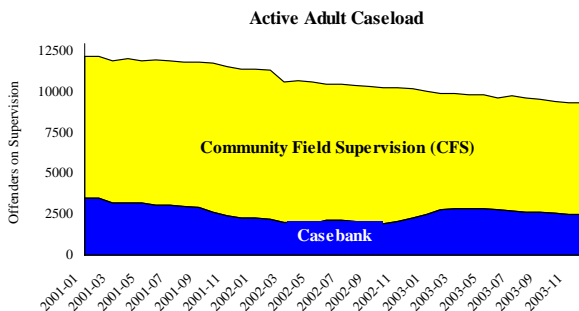
* Includes guilty plea, guilty by trial, diversion, etc.
Felony and misdemeanor outcomes only.

Data Currently Unavailable



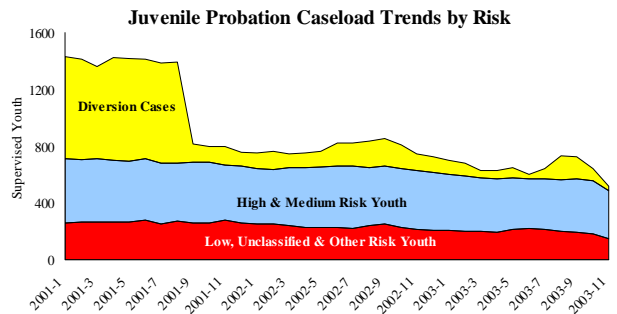
Mock Data

Adult Community Supervision: Caseloads

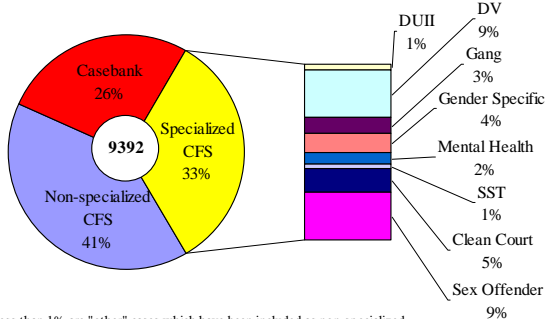


*August 2001 data extrapolated based on prior and subsequent months.

Juvenile Community Supervision: Caseloads

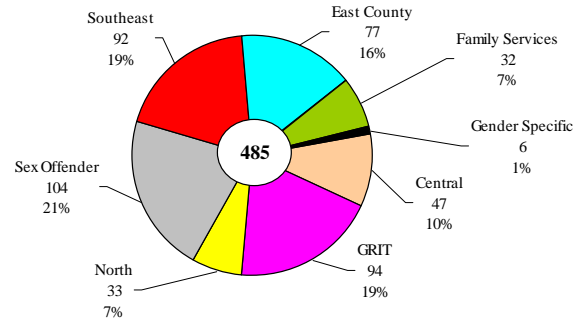


Adult Active Caseload by Type*: December 2003



*less than 1% are "other" cases which have been included as non-specialized

Juvenile Justice Caseload by Unit: November 2003



Notes:

There was a recent decline in the number of cases received by the District Attorney's Office. This decline coincided with an MIS changeover. The charge details for cases received are currently unavailable. There was an increase in specialized CFS adult supervision caseloads; the largest category increase was in sex offender cases. Juvenile Community Supervision caseloads dropped. The multi-year trend graph now contains diversion cases. The dramatic decrease observed in late 2001 was due to a budget reduction. The pie chart reflects reorganization, gender specific cases (females only) have been added and North GRIT cases are now served by GRIT.