

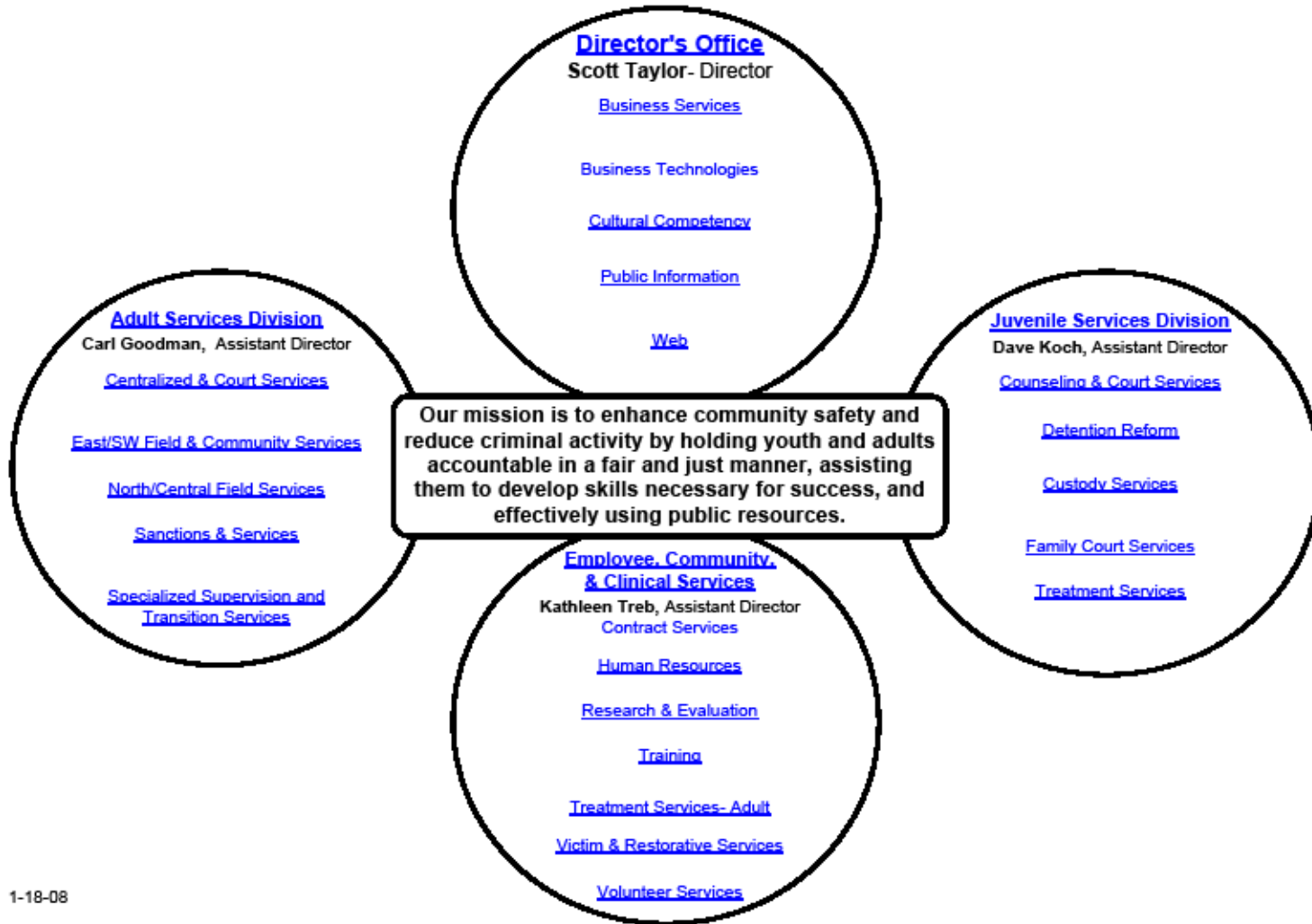
# Department of Community Justice

## 2008-2009 Budget Overview

Scott Taylor, Director

April 29, 2008

**Multnomah County Department of Community Justice  
Organizational Structure**



# Department of Community Justice Overview

## Juvenile Division

- 650 delinquent youth on probation
- 2,500 youth screened at Juvenile detention
- 1,000 non-adjudicated youth held accountable
- \$96,000 in restitution paid

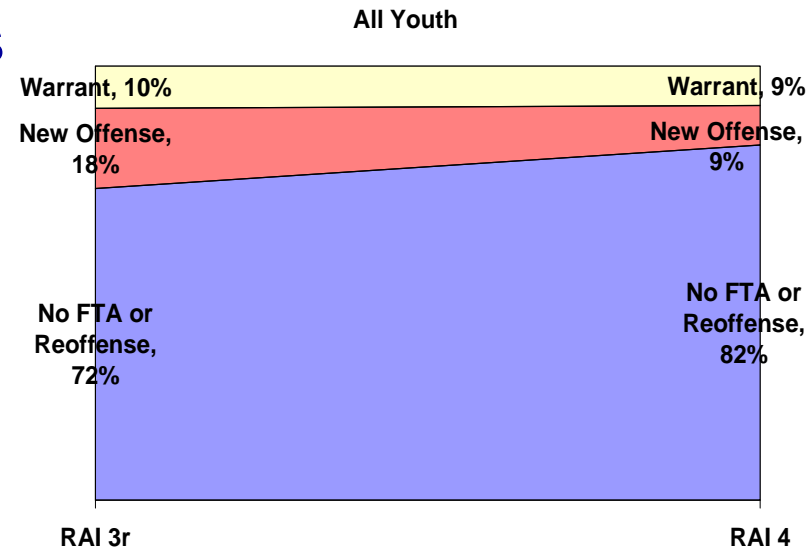
## Adult Division

- 9,000 adult offenders supervised
- 4,300 pre-trial defendants supervised
- 1,600 offenders in treatment per year
- Offenders perform over \$880K in community service

# Accomplishments Juvenile Division 2007-2008

- Continued success with high-risk youth
- Reduced detention disparities
- Research-tested detention criteria deliver results
- New efforts to curb MIP and Tri-Met violators (with court and DA)

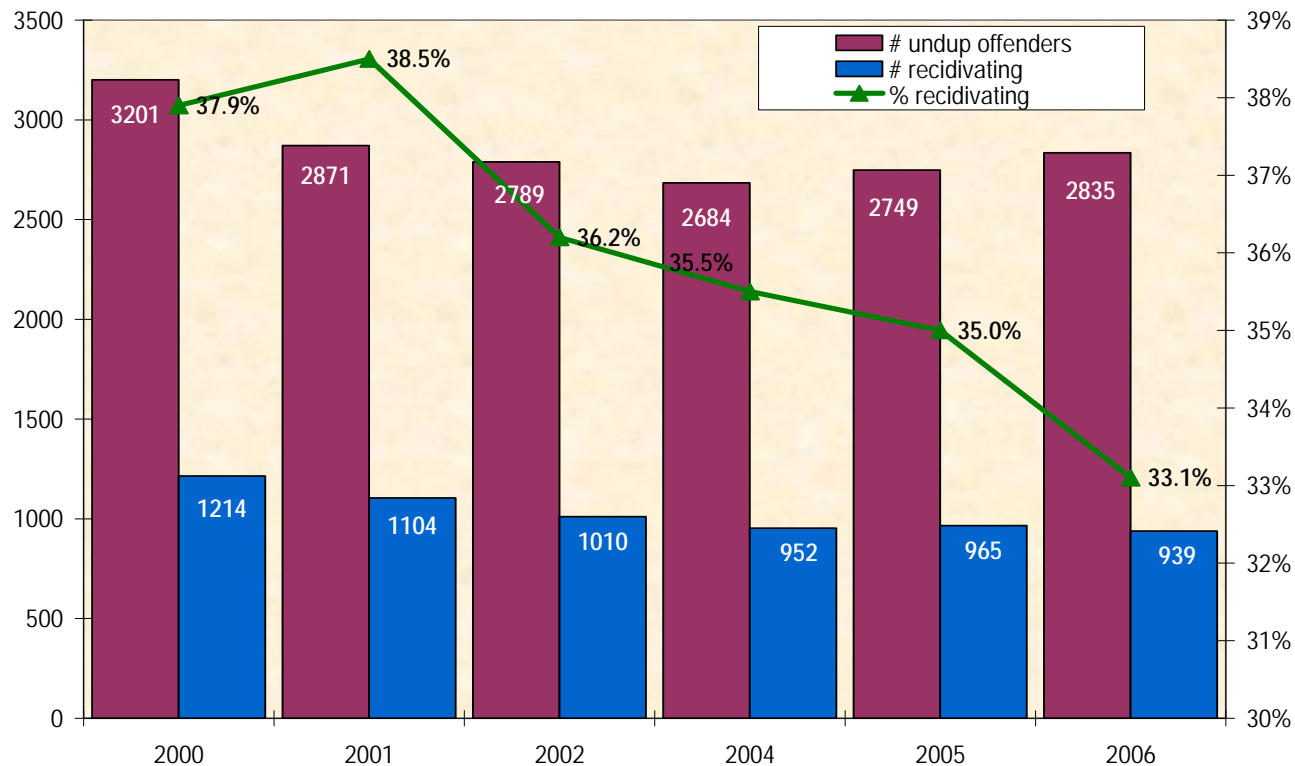
## Changes in Detention Screening Outcomes (RAI 3 v. RAI 4)



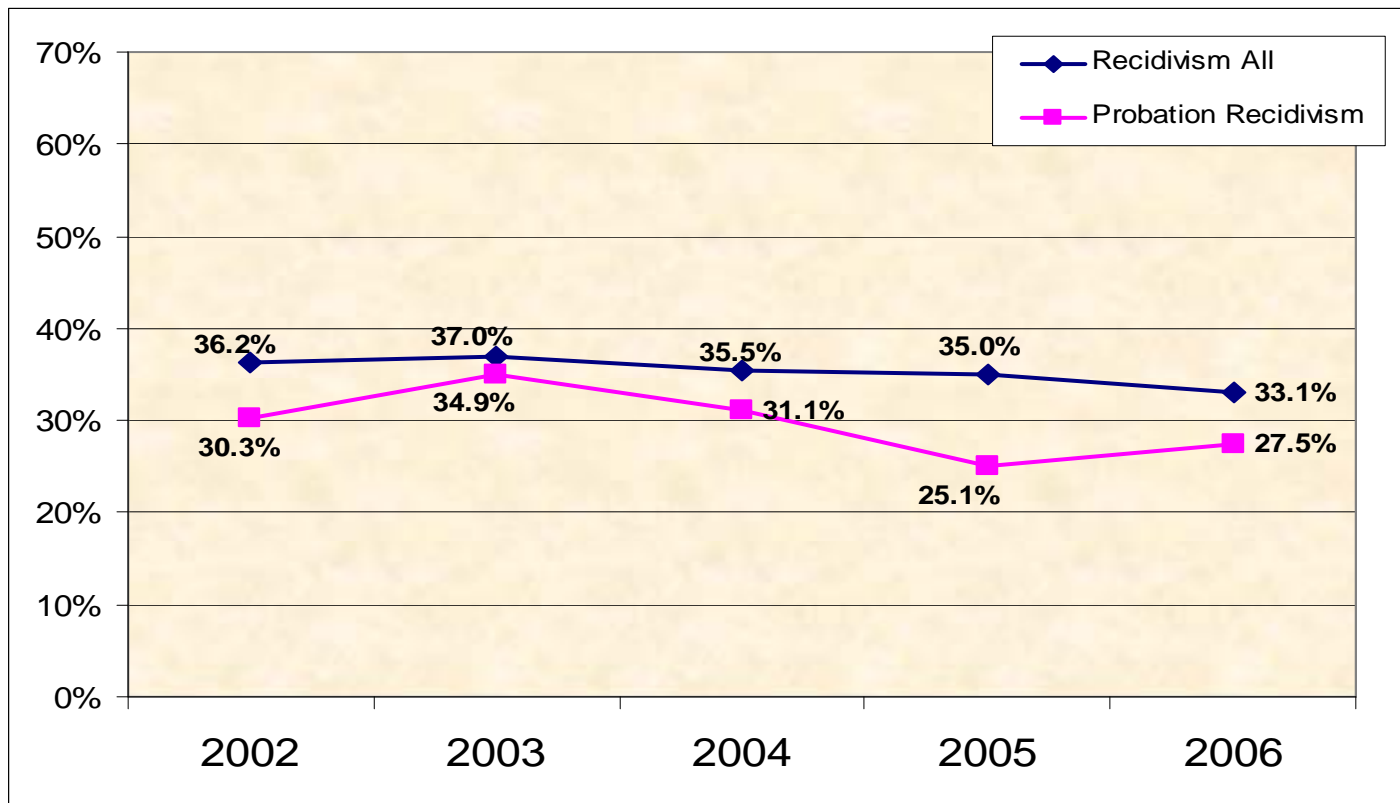
# Juvenile Division Accomplishments

## Lower re-offense rates

### Multnomah County Youth Recidivism 2002 – 2006



# Juvenile Division Accomplishments: Success with adjudicated youth



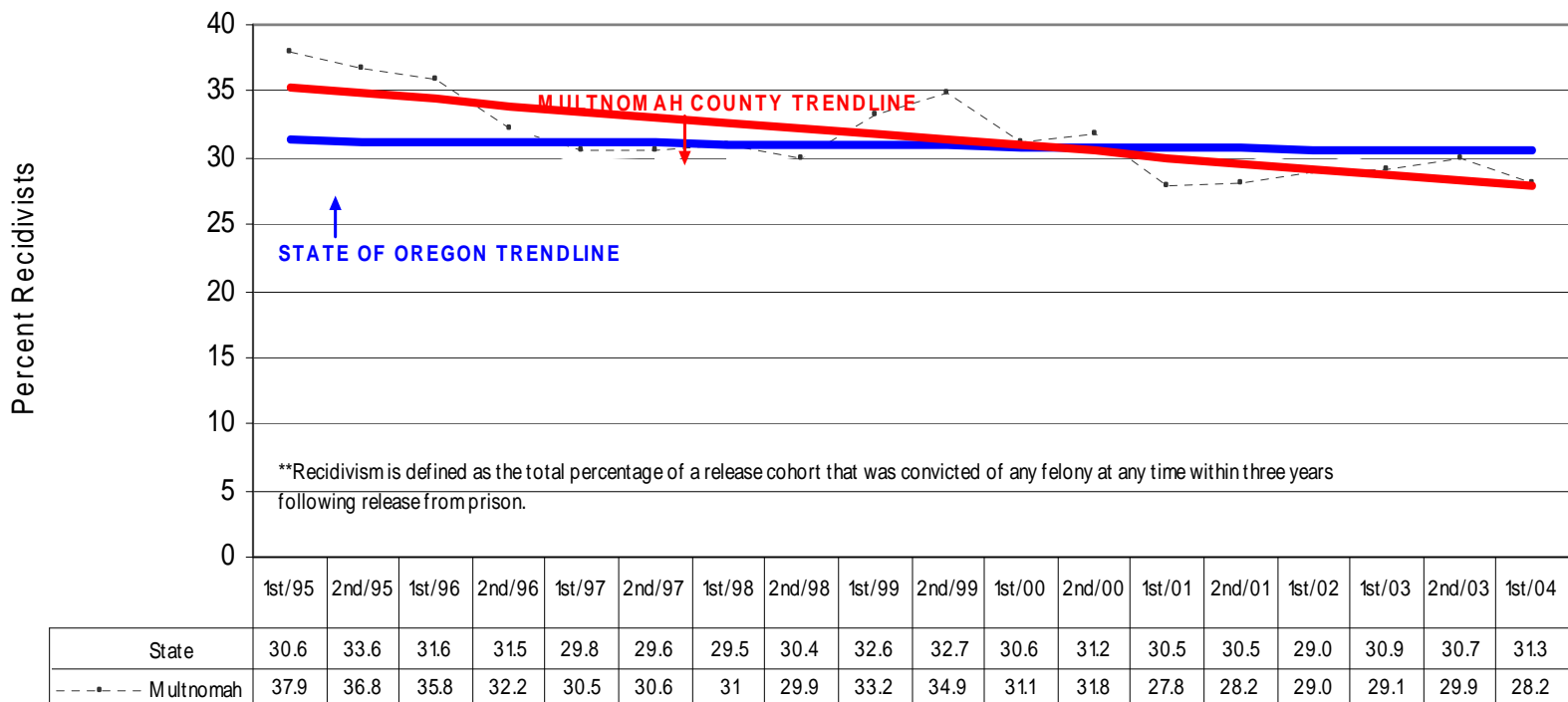
# Accomplishments

## Adult Division 2007-2008

- **Less Crime:**
  - Parole and probation re-offense rates continue to decrease and remain below state average
  - Pre-trial Services: less than 1% re-arrest rate (4,300 cases)
- **Fewer victims:** 83% drop in domestic violence offending after supervision (compared to before supervision)

# Adult Division Accomplishments: Declining Re-offense rates

Parole/PPS Recidivism Rates: for Multnomah County and the State of Oregon

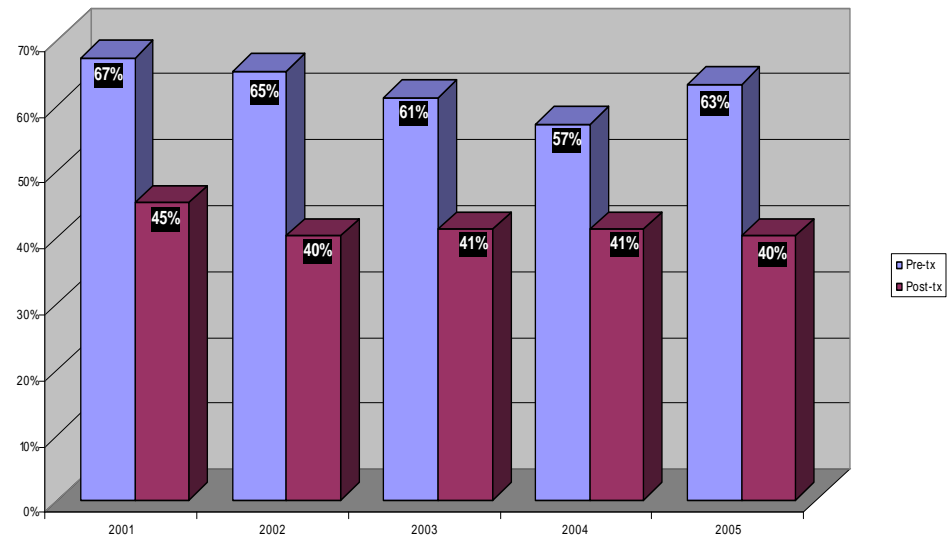




# Community Partnerships and Employee Services Accomplishments

- Treatment Improves Safety: 1,073 adult offenders in residential and 484 in outpatient alcohol and drug treatment
- Quality assurance: on-going performance monitoring of contract outcomes

Reductions in Re-arrest: Pre-treatment v. Post-treatment



# Community Partnerships and Employee Services Accomplishments

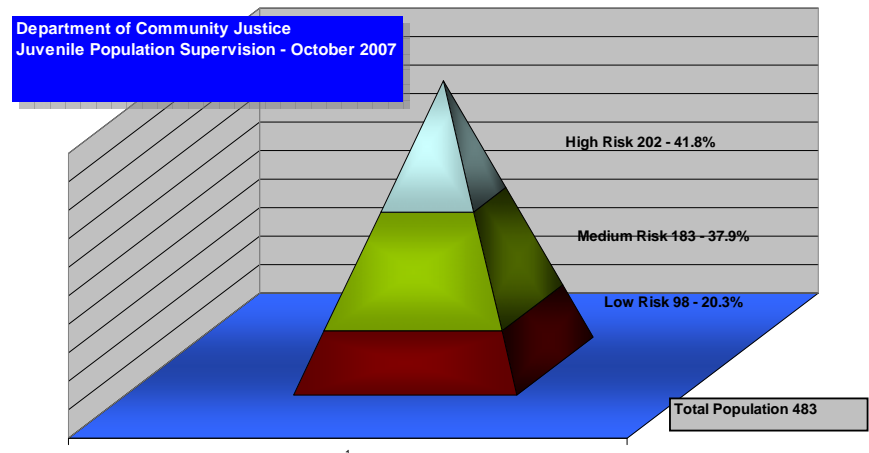
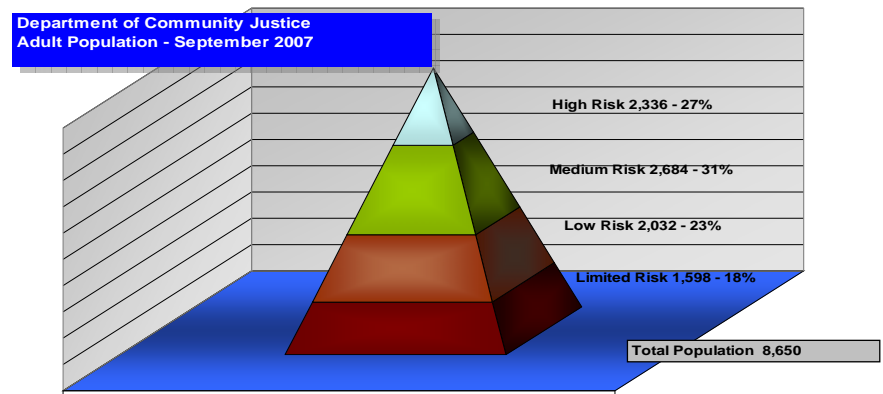
- Responsivity: Diversity of DCJ workforce enhances supervision
- Cultural competency: over 20% of staff received intensive skill-building (to date)

ETHNICITY	DCJ EMPLOYEES	Adult/ Juvenile Offenders	PDX/VANCOUVER LABOR FORCE
Asian/Pac Islander	5.8%	<b>2%/ 3.8%</b>	4.6%
Black/African- American	14.0%	<b>22%/ 29%</b>	2.1%
Hispanic	6.2%	<b>9% / 11%</b>	6.6%
Native American	1.8%	<b>2%/1.5%</b>	0.8%
White/Caucasian	71.7%	<b>64%/ 54%</b>	83.5%
Not Specified	0.4%	<b>1%/ .1%</b>	

# How We Approached FY 2009 Budget

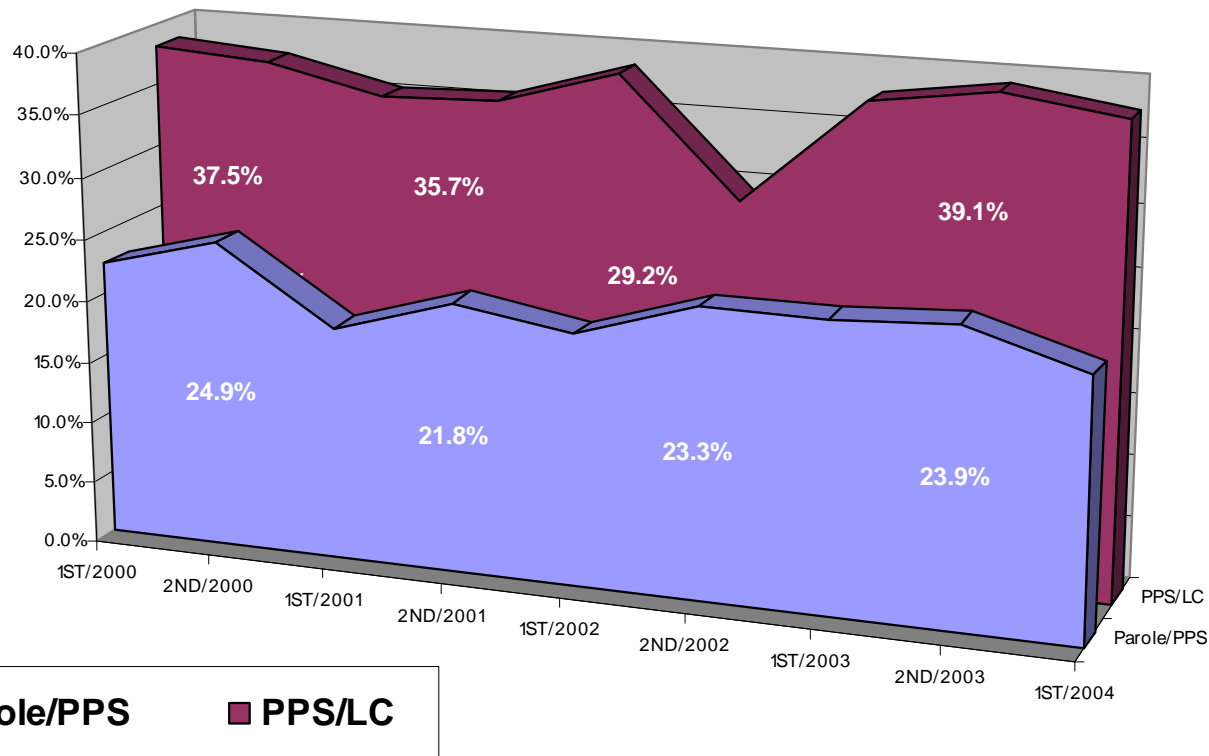
## Twin Peaks:

- Identify highest risk adults and youth
- Prioritize intervention based on risks/needs
- Prioritize programs that serve high risk adults and youth



# Focus on Risk: Local Control Population

## Post-Prison Reconviction Rate by Sub-group



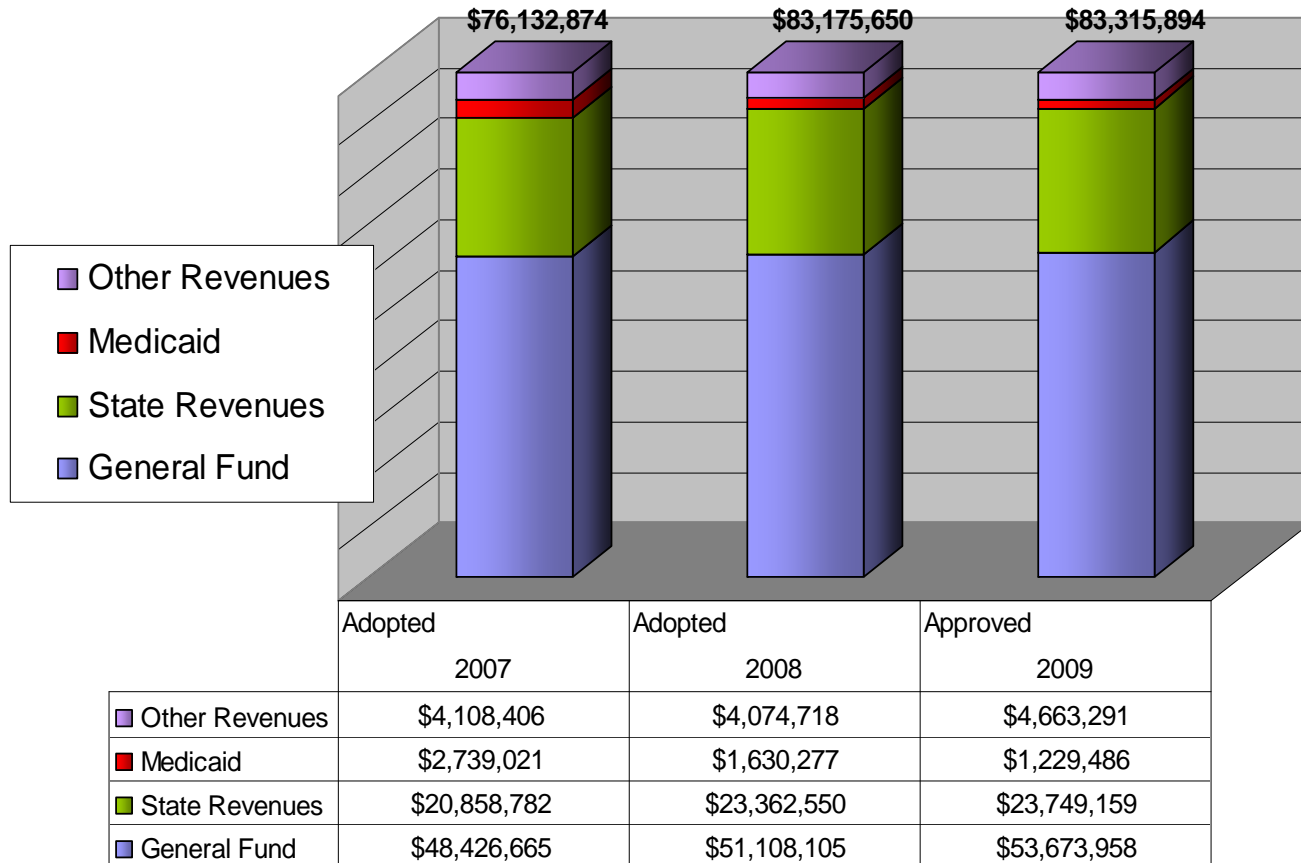
# DCJ FY 2008-2009 Proposed Budget Overview

## Proposed Budget:

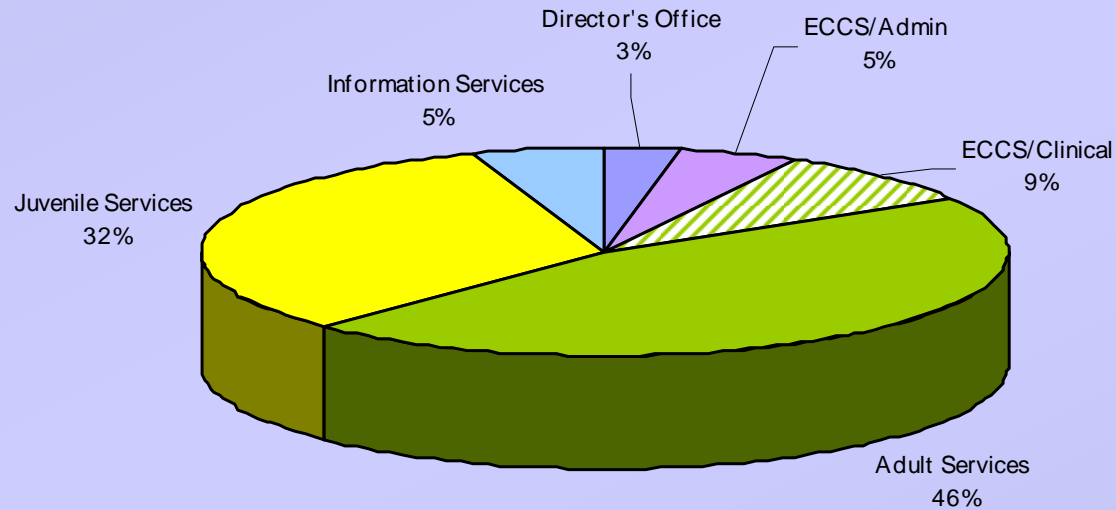
- Maintains public safety as a top priority
- Invests in effective public safety interventions
- Invests in cost-effective public safety interventions
- Reflects new SB1145 formula on Adult side.



# DCJ FY 2008-2009 Changes to Major Revenues



# DCJ FY 2008-2009 Major Expenditures



# Highlights of Proposed Programs

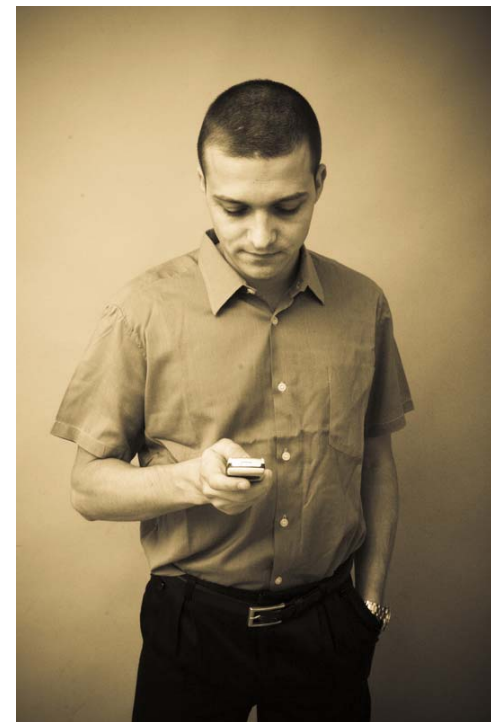
- **Community Sanction Alternatives scale-up(50053):** Community service, EM, DRC, Londer Center and other alternatives produce lower re-offense rates.
- **Wapato secure treatment (contingency):** 50 beds drug/alcohol abuse treatment and re-entry for SB1145 offenders.





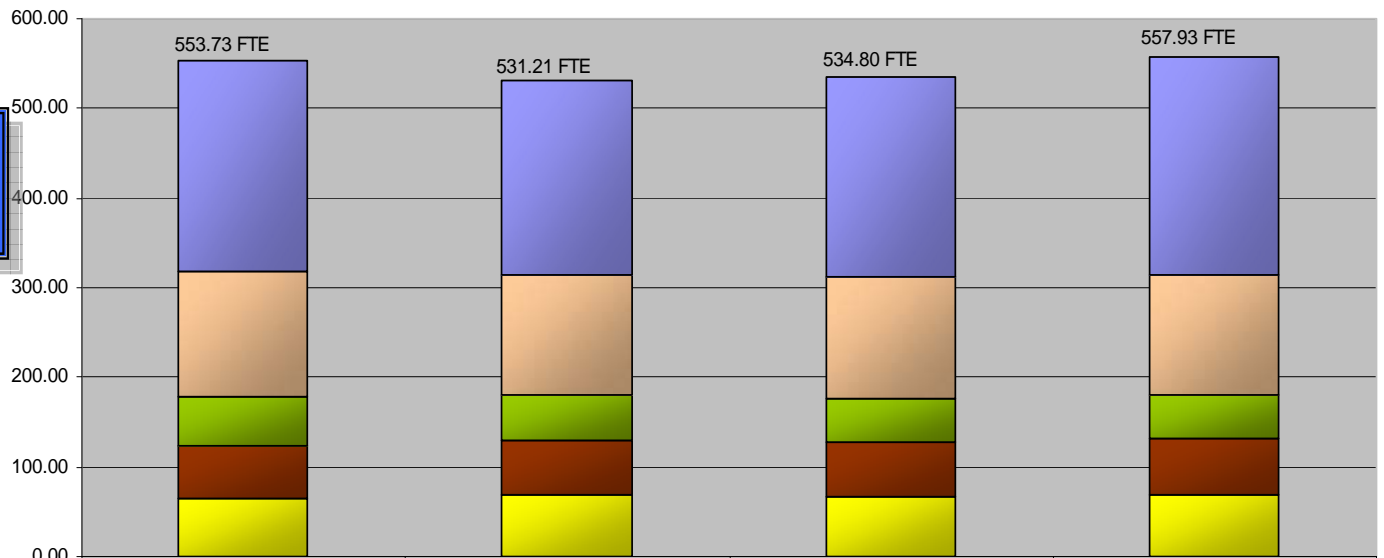
# Highlights of Proposed Programs

- **School Success Unit (50012):** Reconnect 130 probation youth to school.
- **CANS (50027A):** Reduced court FTA 46% -- saving \$6.3M in justice costs.



# DCJ FY 2006-2009: Changes in Staffing

DCJ Staffing History by Bargaining Unit



	2006 Adopted	2007 Adopted	2008 Adopted	2009 Approved
Local 88 General	234.80	216.61	223.53	242.93
FOPPO Probation and Parole Officers	140.83	134.00	134.34	135.00
Local 88 Juvenile Counselors	55.00	51.00	48.30	49.20
Local 86 Juvenile Custody Svcs Spec	58.00	60.50	61.03	61.00
Managers and Supervisors	65.10	69.10	67.60	69.80

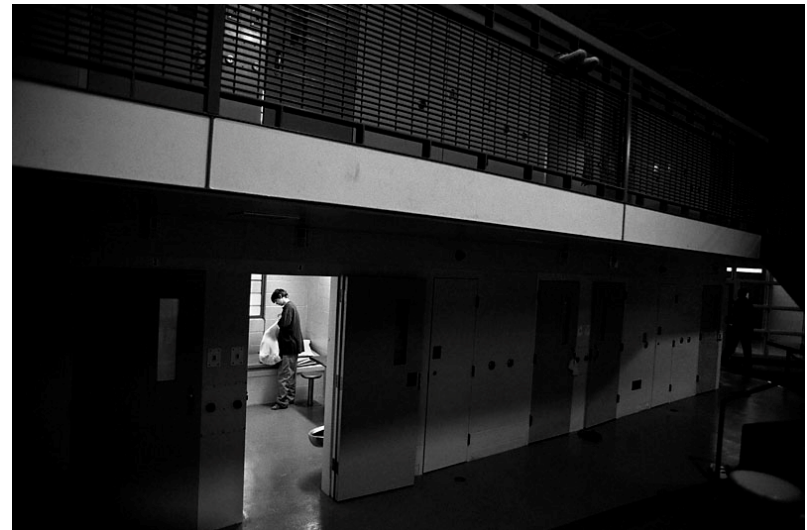
# One Time Only Funding



- Juvenile Justice Complex and Mead building debt payment: saves \$1.8M in CGF each year.

# Programs Revised

- **Juvenile Detention 16 Beds (50023C):** Low ADP facilitates re-entry program for OYA youth from tri-county region.
- **Staff Secure Sex Offender Treatment (50055):** Transition SRTP to community-based program.



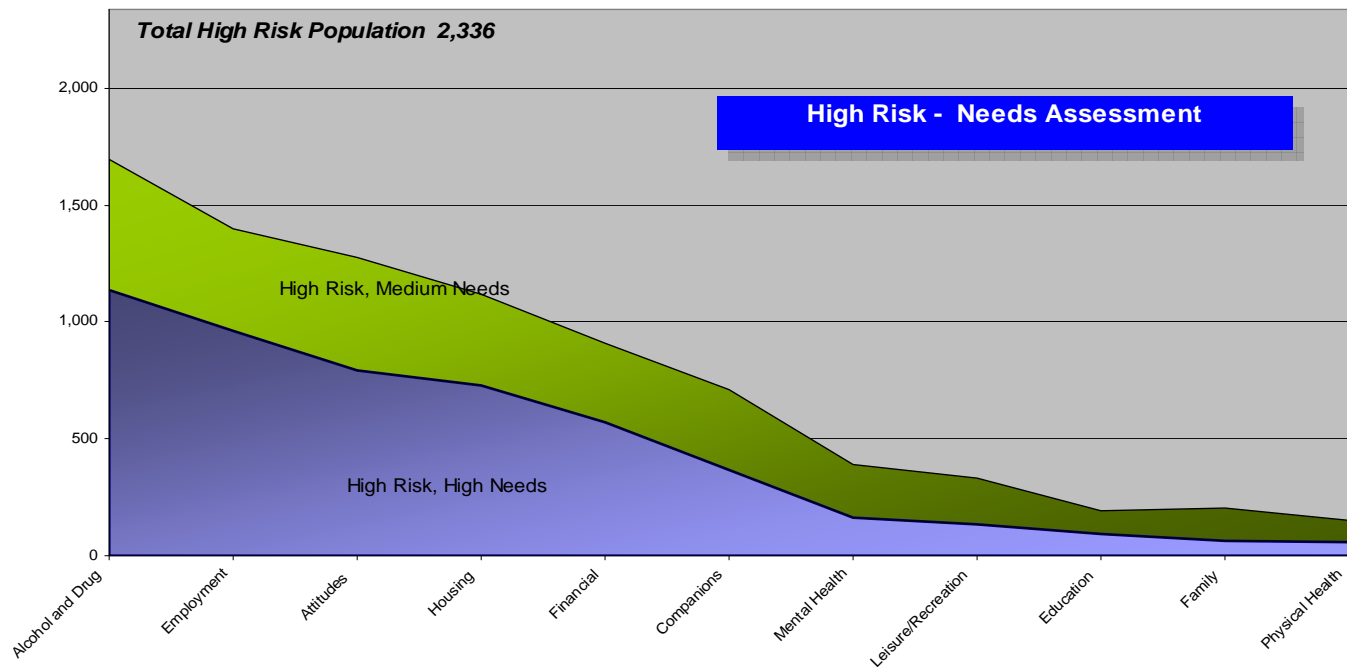
# Performance Measures

## Adult and Juvenile Benchmarks

- Re-offense rates
- Positive case closures
- Employment (adult)/School attendance (youth)
- Treatment referrals
- Restitution collected
- Community service performed

# How do we improve performance?

- Maintain focus on mission
- Take evidence-based practice to next level



# State and Federal Funding Impacts

- **SB 1145 funding**

- Increased funding: Actual cost study takes effect July 1, 2008
- Impact of timber revenue and state economy raise uncertainty
- Continue to work with state on rates for highest cost case loads in SB 1145 formula

- **Juvenile Services**

- Changes in BRS funding affect clinical services (SRTP)
- Timber revenue affects OYA custody capacity

# Issues and Challenges

- **Need to stabilize local public safety funding**
- **Need more community-based sanction alternatives**
- **Need additional drug abuse and mental health treatment capacity**
- **Need to expand early intervention services for youth**
- **Impact of economy on offender employment**