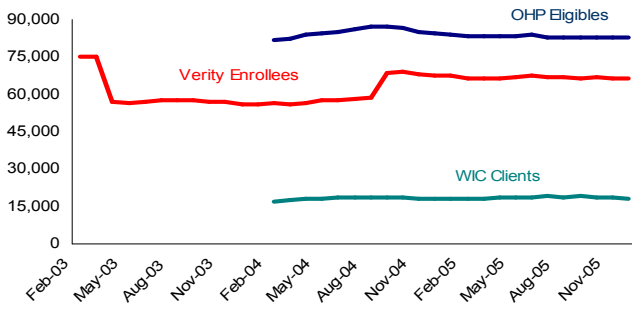


# BASIC NEEDS PRIORITY BRIEF: NOVEMBER 2005

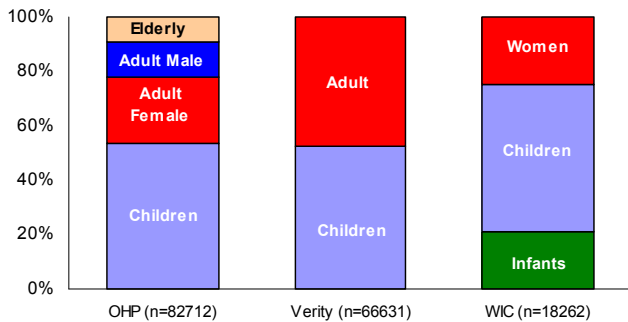
## Multnomah County OHP Eligible & WIC Clients

Clients Eligible for OHP or Enrolled in Mental Health Verity Plan & WIC Program



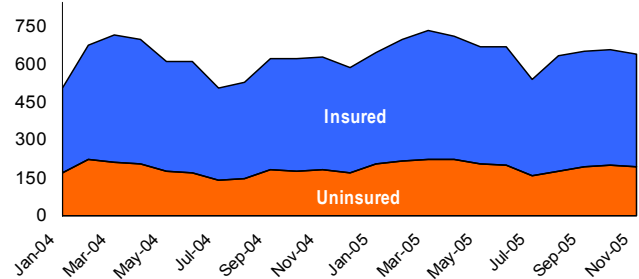
\* Participation in OHP, Verity, and WIC programs can be overlapped.

OHP, Verity, and WIC Clients Profile: Nov. 2005



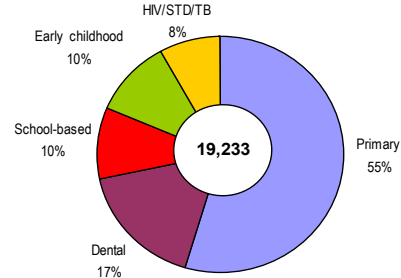
## Multnomah County Health Clinic Visits

Average Daily Health Dept. Clinic Visits by Payer Mix



\* November 2005 had a total of 641 average daily visits. Of them, 69.4% were insured and 30.6% were not insured.

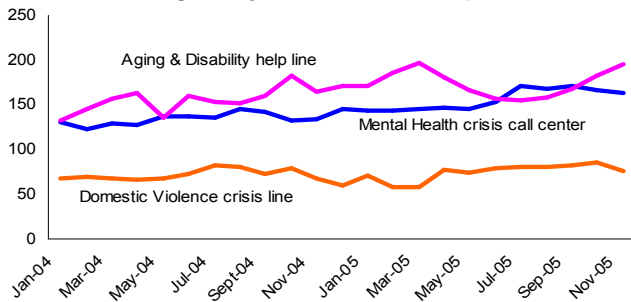
Type of MCHD Clinic Visits: Nov. 2005



\* Above data do not include pharmacy, immunization, and WIC visits. In addition, there were 3,860 clinic visits and lab tests conducted at County's correction facilities in Nov. 2005 (Adult: 3583, Juvenile: 277). The average daily correction health visit is 129.

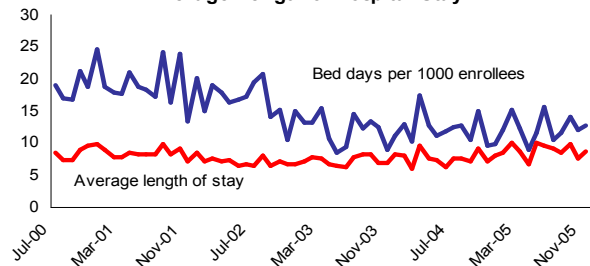
## Crisis Center & Helpline Calls

Average Daily ADS, MH, & DV Help Line Calls



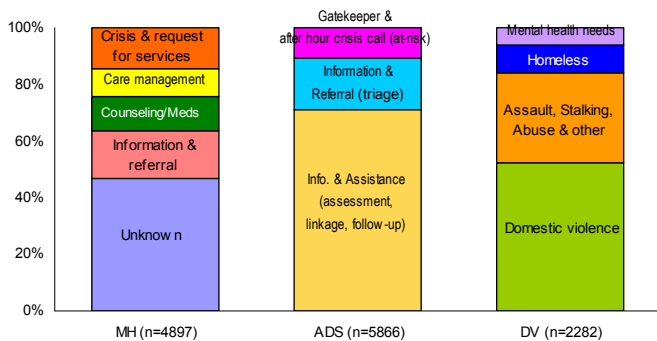
## Mental Health Verity Inpatient Days

MH Inpatient Bed Days Per 1000 Verity Enrollees & Average Length of Hospital Stay

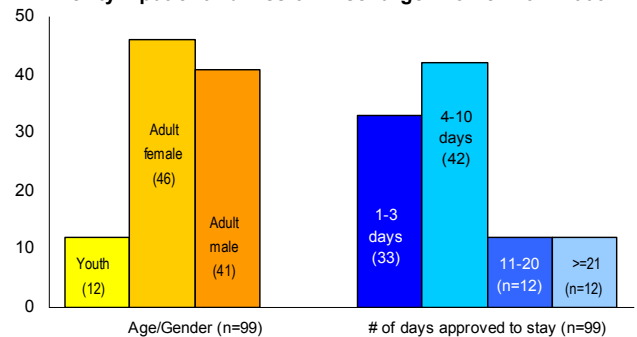


\* There were 855 bed days in November 2005 (Adult: 777, Youth: 78).

Crisis Help Line Call Or Response Type: Nov. 2005



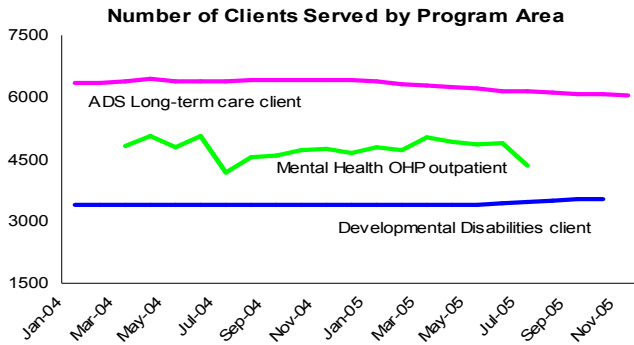
Verity Inpatient Admission/Discharge Profile: Nov. 2005



\* The 855 bed days in November 2005 represent a total of 99 paid discharges.

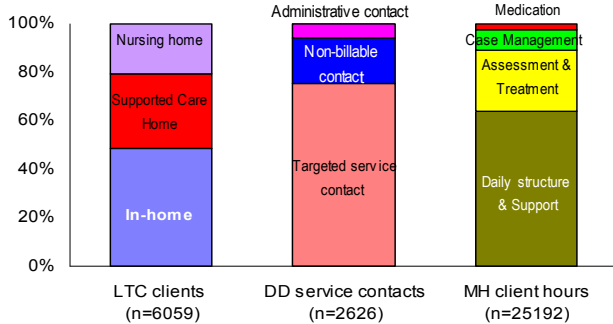
**Notes:** The average daily ADS helpline calls continued to grow in November due to questions regarding the new Medicare Part D implementation. The average daily MH crisis line calls were steady and DV helpline calls declined. The Health Department's daily clinic visits were down slightly for the month. The age/gender distribution for MH inpatient discharge shows that more children and fewer adult women were discharged in November than in October 2005.

## Clients and Case Management Services



\* Data for mental health services are four months behind due to the lag time required for processing the data reported by community treatment providers.

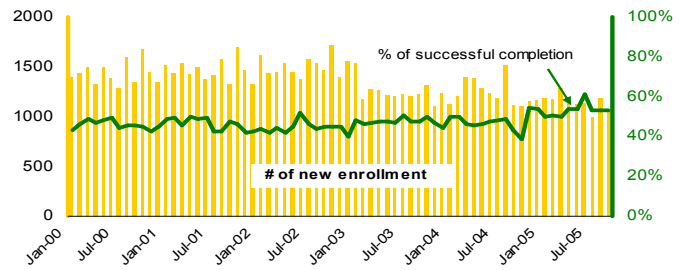
### Client or Service Type: Nov. 2005



\* The latest available data (July 2005) were used for the mental health client hours breakdown. 4347 outpatients had a total of 25,192 hours--5.8 hours on average.

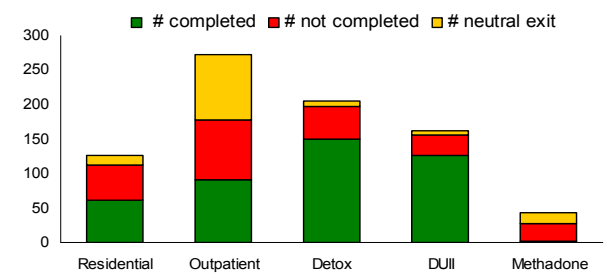
## Multnomah County Addictions Treatment

### A&D Treatment Enrollment & successful Completion



\* Based on the CPMS data received from the state. In Sep. 2005, 1062 Tx episodes opened and 809 exited from the treatment with a 53% successful completion rate. The monthly data will change slightly with each update.

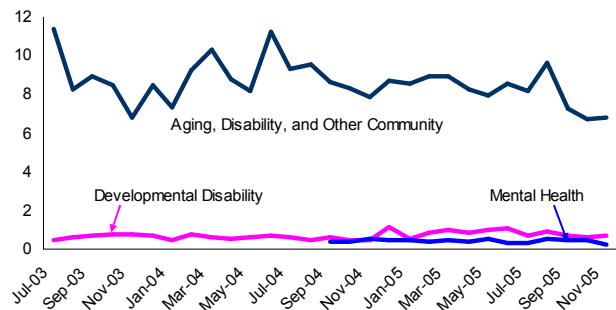
### A&D Treatment Exit Type by Modality: Sep. 2005



Of 809 tx episodes ending in September 2005, 53% (n= 429) successfully completed programs, 29.8% (n= 241) failed to complete, and 17.2% (n=139) had neutral terminations. 'Neutral termination' includes 'fail to engage', 'not appropriate for further tx' and etc..

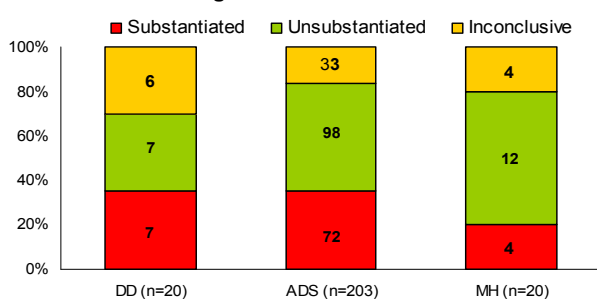
## Protective Services for Vulnerable Populations

### Average Daily Protective Services Investigations Opened



\*Each program serves different populations. ADS is responsible for all protective investigations not covered by developmental disability and mental health services so they have the largest client base.

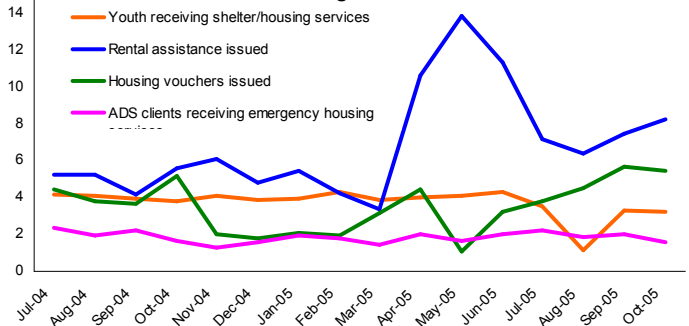
### PS Investigation Cases Closed: Nov. 2005



\*Overall, 232 protective service investigation cases opened and 243 closed in Nov. 2005. Of those closed, 34% were substantiated (n=83). MH 'Unsubstantiated' cases include those that didn't meet the abuse definition.

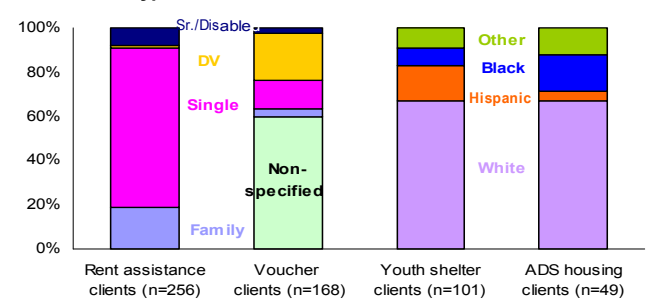
## Shelter & Emergency Housing Assistance

### Average Daily Rent Assistance, Shelter & Emergency Housing Services



\* Data for homeless shelter & housing service have one month lag time. Due to the database problem, the estimated # of youth receiving shelter/housing service in October was used.

### Type of Homeless Clients Served: Oct. 2005



\* A total of 574 homeless clients received housing assistance services in October.

**Notes:** The July MH outpatient clinic hours distribution shows about 20% increase in daily structural & support service. Hours for other type of clinic services reduced accordingly. The number of MH outpatient clients served also decreased (4347 in July vs. 4905 in June). The number of countywide new A&D treatment admission was 1,062 in September 2005, based on the most recent data. Among closed cases, the rate of successful completion was 53%.