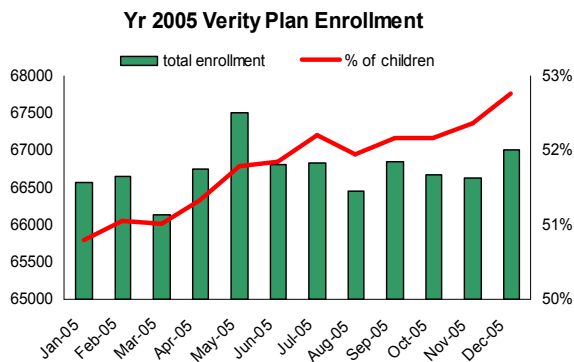


CY 2005 Multnomah County Mental Health Services (#006-06)

This report highlights mental health (MH) services funded by the County. The analysis is based on MH services related data submitted by the appropriate departments for the monthly Basic Needs Brief. Therefore, it should not be read as a comprehensive report of the entire County mental health system.

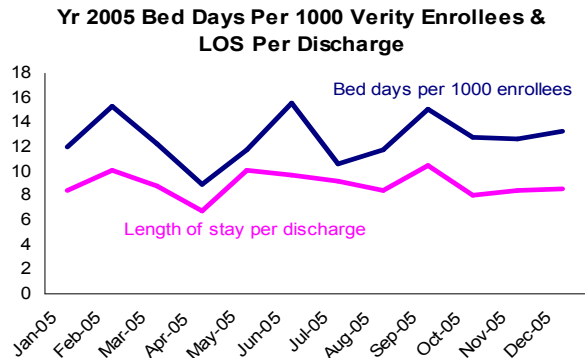
Multnomah County Verity Plan Enrollment. Verity is a mental health managed care organization responsible for Oregon Health Plan members in Multnomah County. The Verity plan enrollment in 2005 was relatively stable from month to month (ranging from a low of 66,139 to a high of 67,509) with an average monthly enrollment of 66,736. However, the percentage of children (age <18) enrolled was slowly increasing during the year from 50.8% in January 2005 to 52.8% in December 2005.



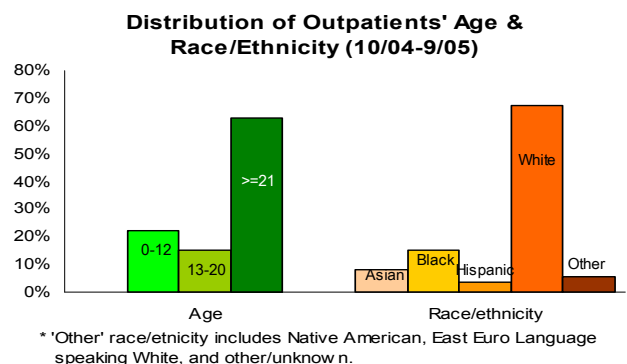
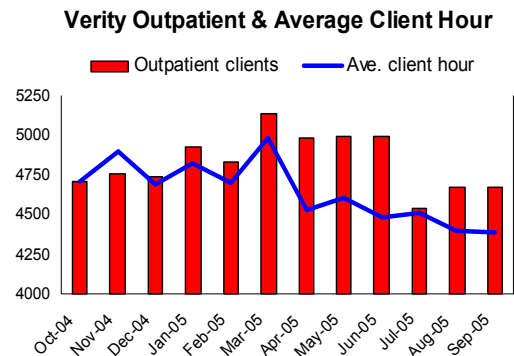
Verity Inpatient Services. Verity enrollees' admission to inpatient psychiatric care is based on medical necessity and clinical criteria. A total of 10,140 approved hospital bed days incurred in 2005. Of those, 89% were for adults and 11% were for children.

Yr 2005 Hospital Bed Days				
MM/YY	Adult	Children	Total	% Adult
Jan-05	701	100	801	87.5%
Feb-05	894	125	1019	87.7%
Mar-05	727	82	809	89.9%
Apr-05	532	67	599	88.8%
May-05	683	109	792	86.2%
Jun-05	910	131	1041	87.4%
Jul-05	677	33	710	95.4%
Aug-05	683	98	781	87.5%
Sep-05	861	142	1003	85.8%
Oct-05	804	48	852	94.4%
Nov-05	768	78	846	90.8%
Dec-05	786	101	887	88.6%
Total	9026	1114	10140	89.2%

The chart below shows monthly inpatient bed days per 1,000 Verity enrollees and the average length of stay per discharge. The average bed days per 1,000 Verity enrollees was 12.7 in 2005, about same level as in 2004.

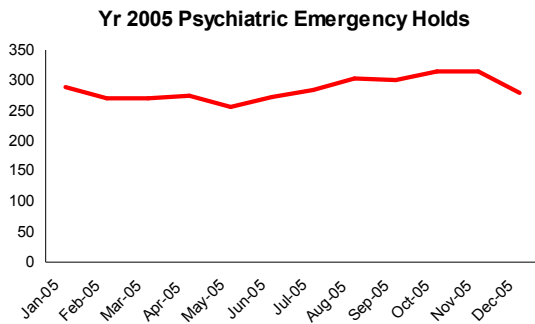


Verity Outpatient Services. The following chart shows the number of unique clients who received any outpatient service and average hours spent on each client. The monthly average outpatient clients numbered 4,830 and the average client hours were 6.1. The average client hours have slowly decreased since April 2005. The change in the monthly outpatient number reflects seasonal fluctuations largely due to increased children's MH services in certain months. Due to a lag in reporting, the most recent 12 months (Oct. 04-Sep. 05) of data are displayed.

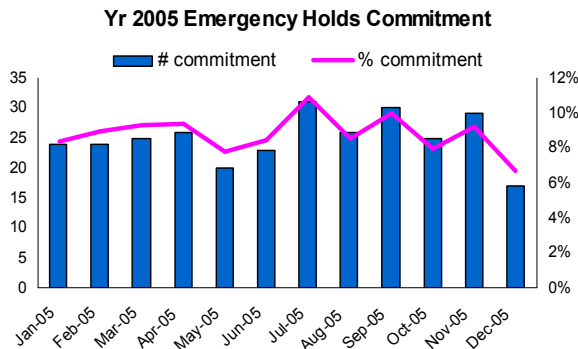


Of all clients seeking outpatient services, 62.6% were adults (age 21 or older), compared to 45.8% of Verity enrollees in this age group. In terms of race/ethnicity, the rate for English-speaking Whites was noticeably higher than for other races/ethnicities: 67.6% outpatients were White. However, only 56.3% of Verity enrollees were White.

Mental Health Emergency Holds & Commitment. A mental health emergency hold occurs when uninsured individuals are hospitalized in a psychiatric unit. Every hold was investigated to determine if involuntary commitment was appropriate. The data in the following chart only counts holds for Multnomah County residents. Holds investigated for other counties or releases from detention were not included.

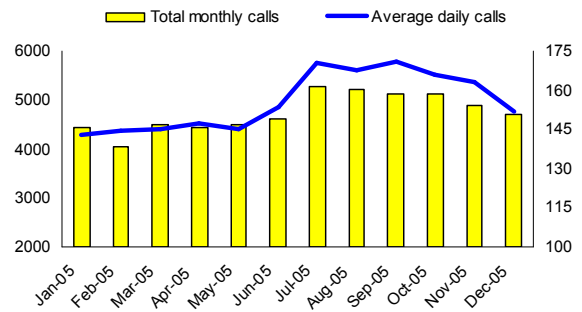


The number of average monthly emergency holds was 286. Of those, only a small percentage of holds were committed after investigation (mean=8.7%). The total number of commitments were 300 in 2005, similar to the number of commitments in 2004 (n=307). The annual commitment rate (8.7%) also changed little compared to 2004 (9.1%). In a month-to-month comparison, July had the highest commitment number (n=31) and the highest commitment rate (10.9%) in 2005.



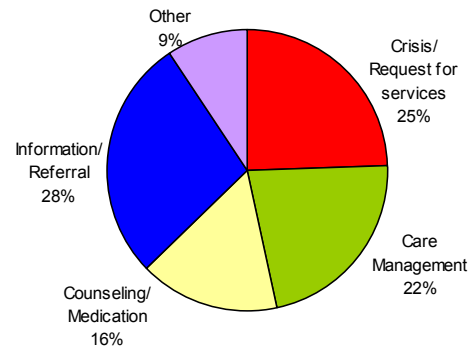
Mental Health Crisis Line Calls. The County mental health call center answered a total 56,889 calls in 2005, with an average of 156 calls per day. The call center experienced a noticeable increase in the number of calls answered since July 2005 when a new telephone system was implemented. The new system increased the number of calls and resulted in better customer service.

Yr 2005 Mental Health Crisis Line Calls



The pie chart breaks out the type of calls based on the call information documented in the department's call log database (all calls were recorded but only approximately 67% of all answered calls were classified).

Type of Recorded MH Helpline Calls (N=38073)



County Funded MH Programs & Services. Mental health service falls into the Basic Needs Priority area in the FY2005-06 budget process. In FY2006, the County budgeted more than \$62 million in spending on mental health related programs and services, with approximately 20% from the county general fund. The following table shows the top county mental health service programs based on the funding size.

Selected County Funded Mental Health Programs

MH program or service	Total FY05-06 funding*
MH Outpatient Treatment	\$11,926,705
Children's Intensive Community Based MH	\$8,840,978
School Aged MH Services	\$7,098,955
MH Crisis Services	\$4,340,263
MH Inpatient Services	\$4,323,078
MH Residential Treatment	\$2,414,997
MH for Uninsured County Residents	\$2,202,583
MH Crisis Call Center	\$2,186,390

* Include both general and non-general fund.

Other large funded mental health programs that were not listed in the table include corrections health, MH emergency hold and hold commitment investigation, mental health transition housing, and early childhood mental health services.