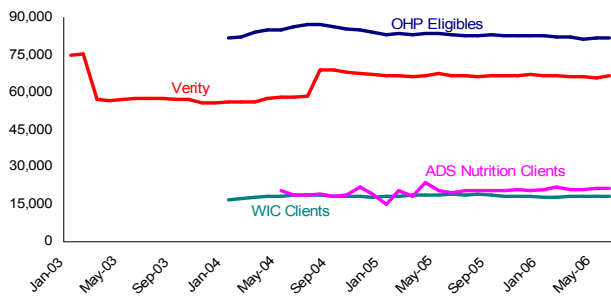


BASIC NEEDS PRIORITY BRIEF: JUNE 2006

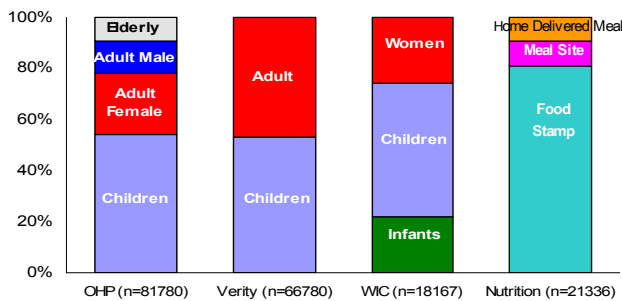
Multnomah County Basic Needs Clients

Clients Enrolled or Served by Basic Needs Programs



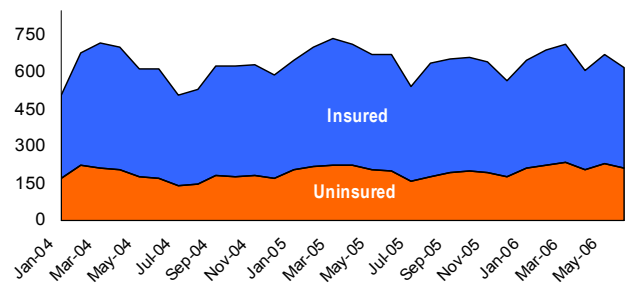
* Participation in OHP, Verity, WIC, and ADS nutrition service programs can be overlapped.

Clients in Basic Needs Programs: June 2006



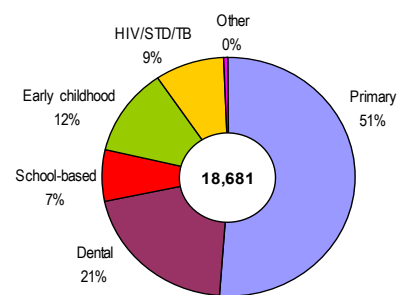
Multnomah County Health Clinic Visits

Average Daily Health Dept. Clinic Visits by Payer Mix



* June 2006 had a total of 623 average daily visits. Of those, 66% were insured and 34% were not insured.

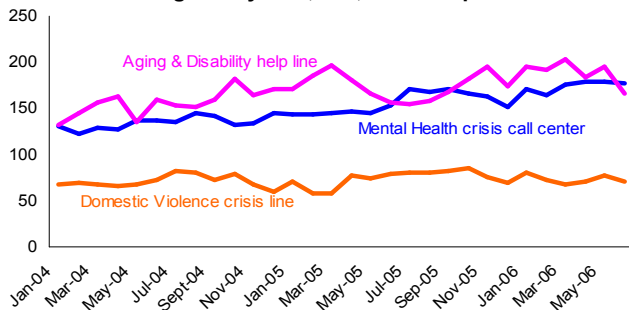
Type of MCHD Clinic Visits: June 2006



* The above data does not include pharmacy, immunization, and WIC visits. In addition, there were 3,117 clinic visits and lab tests conducted at County's correction facilities in June 2006. The average daily correction health visit was 104.

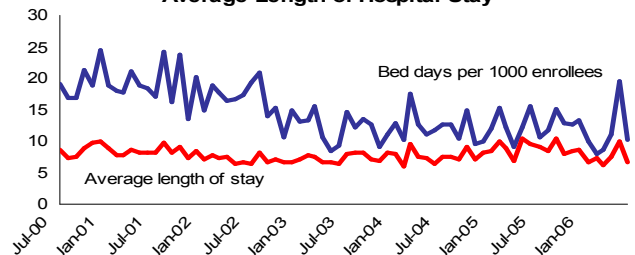
Crisis Center & Helpline Calls

Average Daily ADS, MH, & DV Help Line Calls



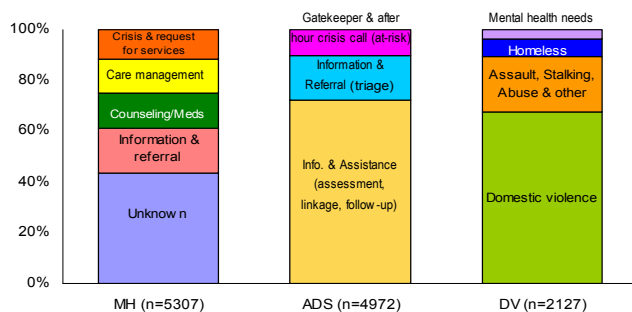
Mental Health Verity Inpatient Days

MH Inpatient Bed Days Per 1000 Verity Enrollees & Average Length of Hospital Stay

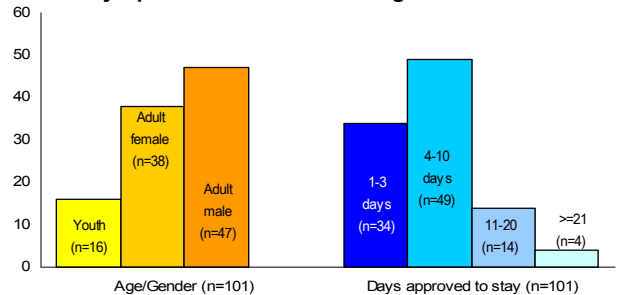


* There were 683 bed days in June 2006 (Adult: 572, Youth: 111).

Crisis Help Line Call Or Response Type: June 2006



Verity Inpatient Admission/Discharge Profile: Jun. 2006

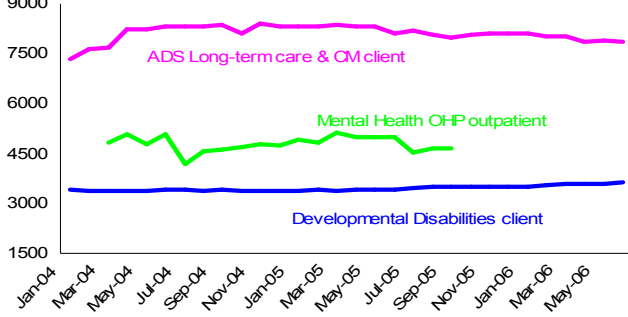


* The 683 paid bed days in June 2006 represent a total of 101 hospital discharges.

Notes: The average daily inpatient bed days per 1000 Verity members and bed days per discharge dropped significantly after last month's spike. Also seen was the decrease of average daily ADS help line calls in June. However, the average daily Mental Health crisis line calls still held its upward trend. The average daily Health Dept. clinic visits decreased in June, mainly due to the drop in school-based health services during summer vacation.

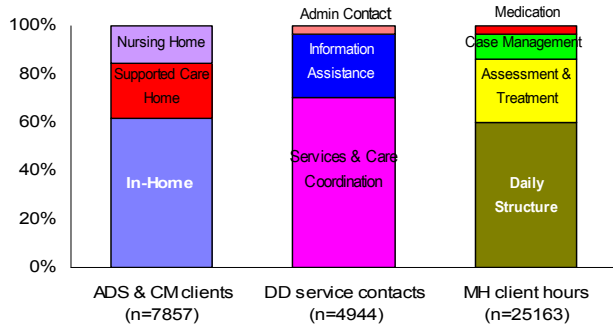
Clients and Case Management Services

Number of Clients Served by Program Area



* Data for mental health outpatient services is temporally unavailable due to database conversion issue.

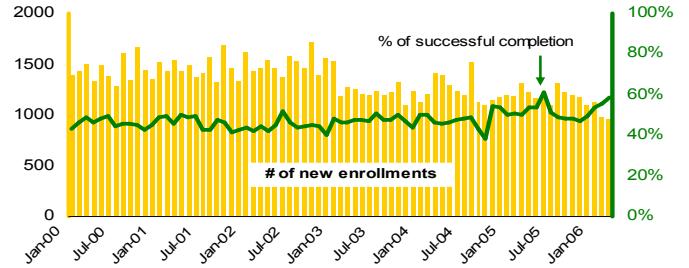
Client or Service Type: June 2006



* The latest available mental health outpatient data (Sep. 2005) were used. In Sep. 2005, 4671 outpatients had a total of 25,163 hours--5.4 hours on average.

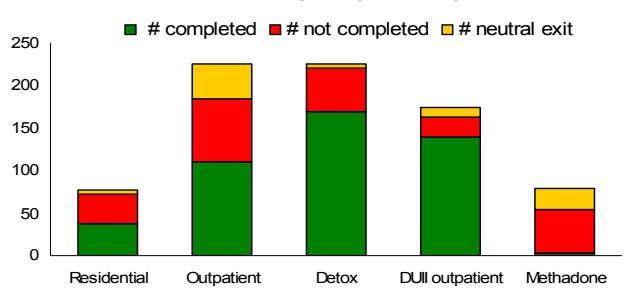
Multnomah County Addictions Treatment

A&D Treatment Enrollment & successful Completion



* Based on the CPMS data received from the state. In Mar. 2006, 967 Tx episodes opened and 781 exited from the treatment with a 58.9% successful completion rate. The monthly data will change slightly with each update.

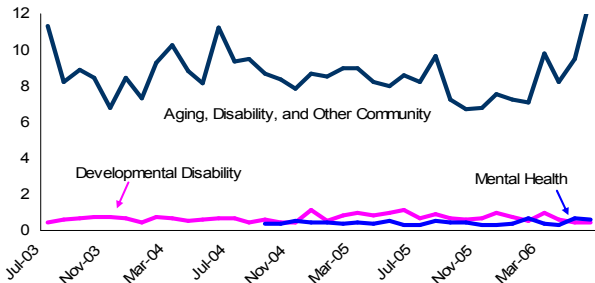
A&D Treatment Exit Type by Modality: Mar. 2006



* Of 781 tx episodes ending in March 2006, 58.9% (n= 460) successfully completed programs, 30.0% (n= 234) failed to complete, and 11.1% (n=87) had neutral terminations. 'Neutral termination' includes 'fail to engage', 'not appropriate for further tx' and etc..

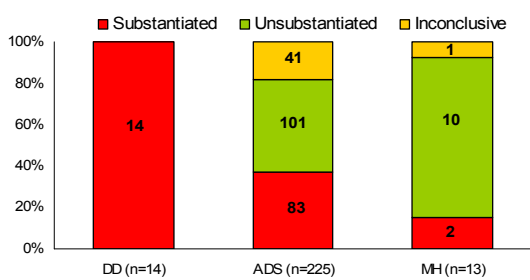
Protective Services for Vulnerable Populations

Average Daily Protective Services Investigations Opened



*Each program serves different populations. ADS is responsible for all protective investigations not covered by developmental disability and mental health services so they have the largest client base.

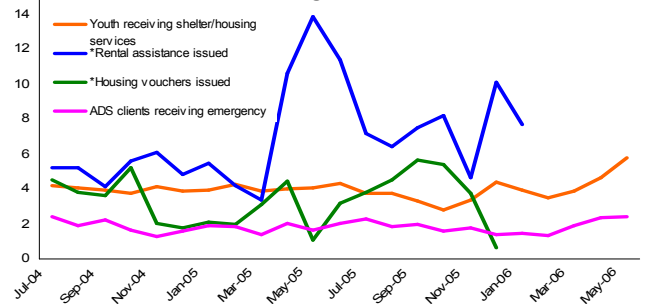
Investigation Case/allegation Closed: June 2006



* Overall, 418 protective service investigation cases opened and 252 allegations closed in June 2006. Of those closed, 39% were substantiated (n=99). MH 'Unsubstantiated' cases include those that didn't meet the abuse definition.

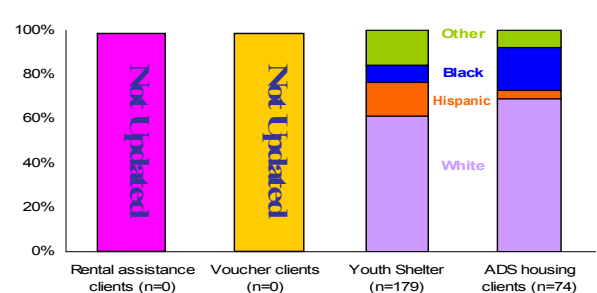
Shelter & Emergency Housing Assistance

Average Daily Rent Assistance, Shelter & Emergency Housing Services



* Data for homeless shelter & housing services have one month lag time. Rental Assistance and Voucher data is currently unavailable.

Type of Homeless Clients Served: May 2006



* Not including rental assistance and voucher clients, 253 people received housing assistance services in May 2006. The average age of youth who used shelter or transitional housing was 19.1.

Notes: The average daily ADS protection service investigations increased by 36% over last month. It was the highest since September 2005. The daily average youth shelter population was slightly up in June. Twenty-five more developmental disabilities clients were added to the case management service in June. The number of DD service contacts also increased substantially (4944 contacts in June vs. 4442 in May). About 70% of DD contacts were billable services.