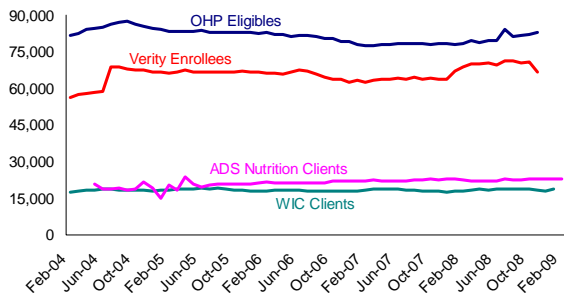


BASIC NEEDS PRIORITY BRIEF: FEBRUARY 2009

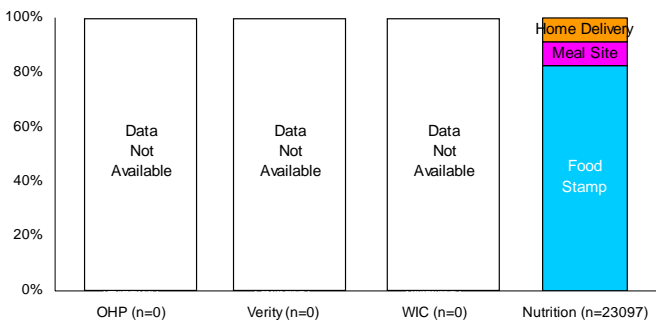
Multnomah County Basic Needs Clients

Clients Enrolled or Served by Basic Needs Programs



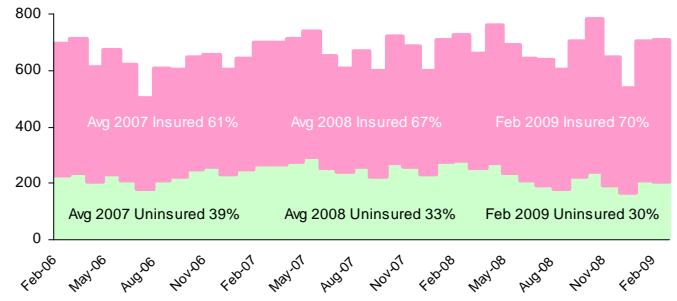
* Participation in OHP, Verity, WIC, and ADS nutrition service programs can overlap

Clients in Basic Needs Programs: February 2009



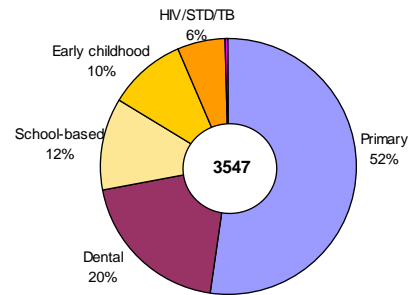
Multnomah County Health Clinic Visits

Average Daily Health Dept. Clinic Visits by Payer Mix



February 2009 recorded a total of 21,895 total clinic visits which corresponds to 706.3 average daily visits.

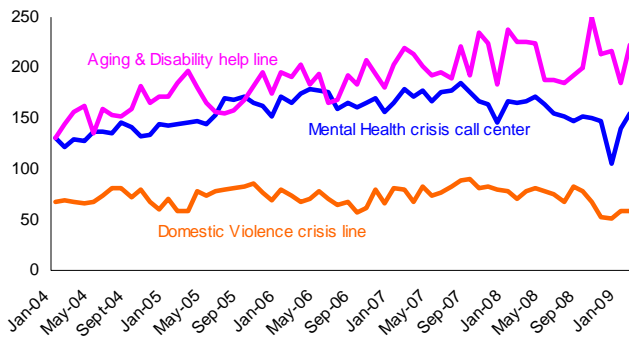
Type of MCHD Clinic Visits: February 2009



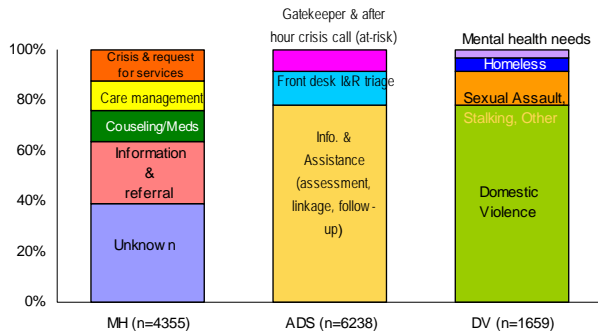
* The above data does not include pharmacy, immunization, or WIC visits. In addition, there were 3547 clinic visits and lab tests conducted at the County's adult correctional facilities in February 2009. The average number of daily correction health visits was 127.

Crisis Center & Helpline Calls

Average Daily ADS, MH, & DV Help Line Calls

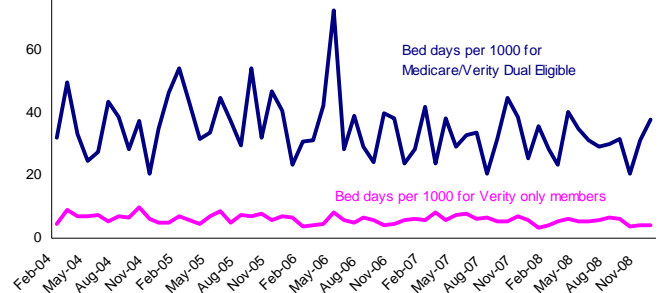


Crisis Help Line Call Or Response Type: February 2009



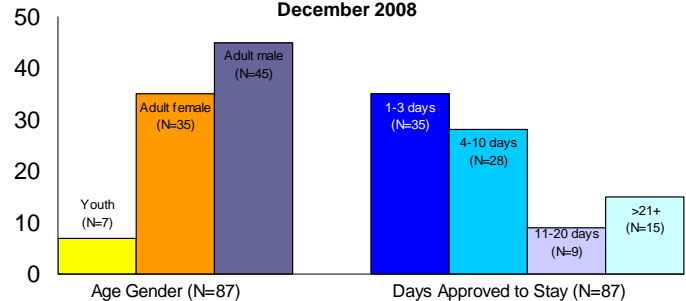
Mental Health Verity Inpatient Days

MH Inpatient Days Per 1000 Verity Members



The County pays an average of \$4,200 per discharge for each Verity only inpatient stay and \$1,100 for Medicare/Verity dual eligibles. The December average length of stay per discharge is 9.67 days.

Verity Inpatient Admission/Discharge Profile: December 2008

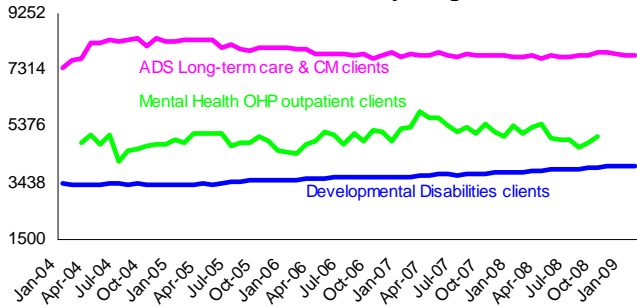


* The 677 paid bed days in December 2008 represent a total of 70 hospital discharges.

Notes: A new chart format for clinic visits by payer mix shows the average daily visits and the proportion of insured patients. Corrections health data for juvenile detention facilities is not available for February 2009, so the total MCHD clinic visits appears lower than average. Average daily Domestic Violence crisis calls have increased again this month, after a trend of decreasing since May 2007. Homeless DV calls have decreased from a high of 324 in March 2008 to a low of 88 in February 2009. Verity mental health data is still not available due to a state data system problem.

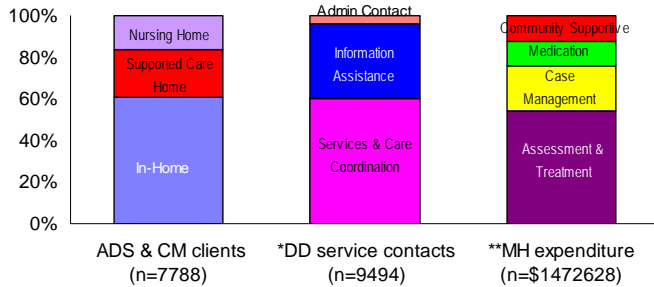
Clients and Case Management Services

Number of Clients Served by Program Area



*Mental Health data show a two month time lag as claims may be submitted up to four months after a visit. Monthly data will change slightly with each new update.

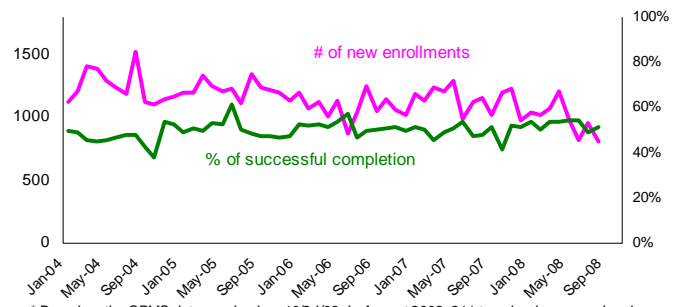
Client or Service Type: February 2009



* DD service contacts can now contain multiple services in one progress note.
** Mental Health expenditure data are from October 2008.

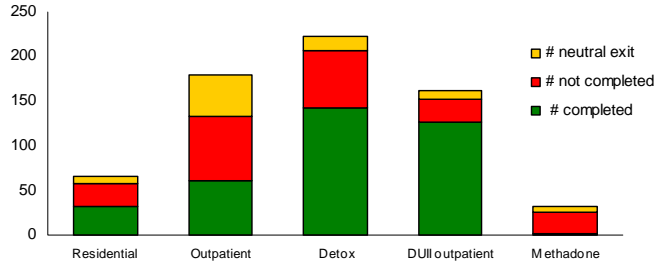
Multnomah County Addictions Treatment

A&D Treatment Enrollment & Successful Completion



* Based on the CPMS data received on 10/24/08. In August 2008, 811 tx episodes opened and 716 closed. The average successful treatment completion rate was 51% over the past 12 months. The monthly data will change slightly with each new update.

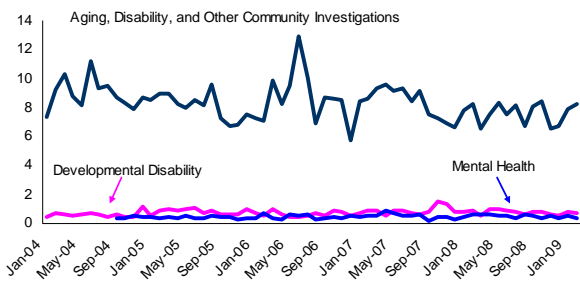
A&D Treatment Exit Type by Modality: June 2008



* Of 661 treatment episodes ending in June 2008, 55% (n=365) successfully completed programs, 32% (n=211) failed to complete, and 13% (n=85) had neutral terminations. All closed cases, no matter how they exited from treatments, were included in the denominator for calculating completion rates.

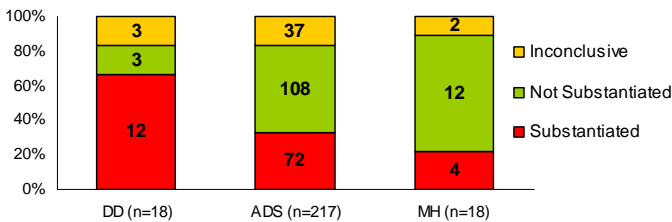
Protective Services for Vulnerable Populations

Average Daily Protective Services Investigations Opened



*Each program serves different populations. ADS is responsible for all protective investigations not covered by developmental disability and mental health services, so they have the largest client base.

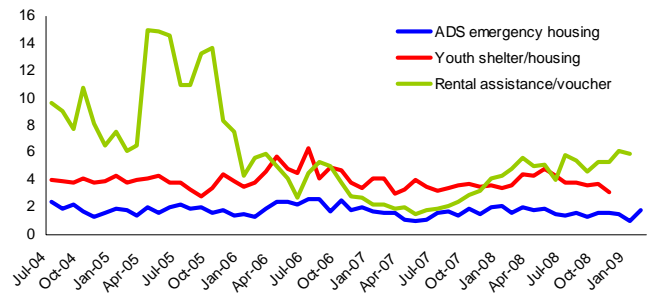
Investigation Case/Allegation Closed: February 2009



*Overall, 262 protective service investigation cases opened and 253 allegations closed in February 2009. Of those closed, 35% were substantiated (n=88). MH 'not substantiated' cases include those that didn't meet the abuse definition.

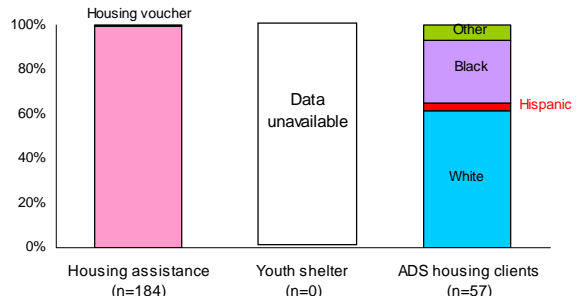
Shelter & Emergency Housing Assistance

Average Daily Clients Receiving Rental Assistance & Emergency Housing Services



* Data for this chart have a one month lag time.

Homeless Clients Served: February 2009



* ADS client counts include individuals living in the same household as the applicant. 'Other' includes individuals whose demographics are unavailable or undocumented. For Youth Shelter data, 'Other' includes mixed races.

Notes: Developmental Disability clients have continued to rise steadily this month. Alcohol and drug treatment data is unavailable again and may be replaced by another type of data in future Briefs. The percentage of protective service investigations that were substantiated has risen steadily over the last year from 28% in March 2008 to 35% in February 2009. Youth shelter data is currently unavailable due to data processing problems, and data from prior months may be inaccurate. ADS emergency housing services, both in total numbers and average daily numbers, are higher than any month since May 2008 after a sharp decrease in January.